

LUCK//NOW Mixer Feeders

The Line of LUCK//NOW Mixer Feeders Just Got Bigger and Better

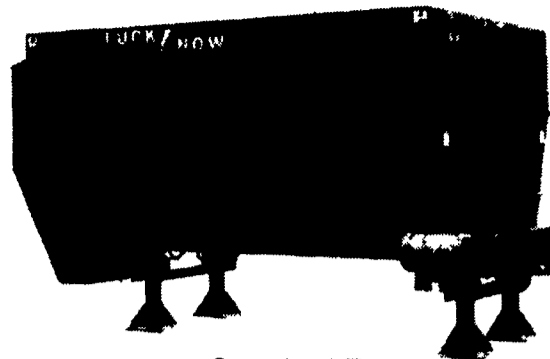
Since 1979 LUCK//NOW Mixer Feeders have been recognized as one of the most dependable and strongest built mixers in the field.

Reliable "C & S" Chain and Socket models from 200 cu. ft. to 375 cu. ft. are the foundation for the well earned reputation.

To enhance its existing line of Mixer Feeders, LUCK//NOW introduced the "P" Series of Mixer Feeders with six models ranging in size from the Model 300 with a mixing capacity of 310 cubic ft., to the Model 750 with a mixing capacity of 750 cubic ft.

The large diameter augers in all the "P" Series Mixer Feeders are capable

of giving the mix required, from rations with well cured, long stemmed legume-type hay, to mixes with green grass, and mixes with silage and commodities. Better milk production, better weight gains and greatly improved animal health are just some of the results of a finely-tuned feed ration.



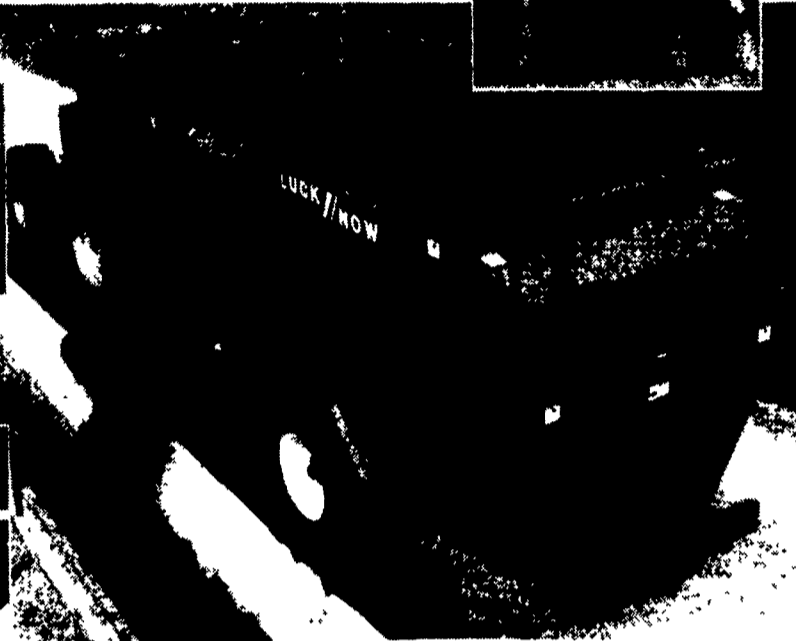
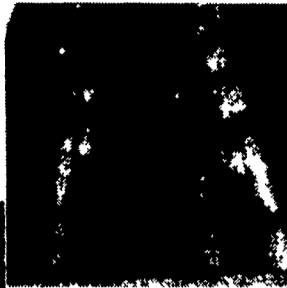
Standard Features

- Four auger mixing system,
- Large diameter augers with 5/8" and 3/8" thick flighting,
- Large diameter heavy wall auger tubes for extra strength to do the tough mixing jobs
- Bottom shear angle for the harder-to-mix rations;
- Heavy Duty SFCW flanged block bearings on the drive end of all augers, equipped with special seals and covers, provide for years of trouble-free operation;
- External grease banks;
- Rear oil bath drive compartment lets all chains and sprockets run in oil,
- Planetary gear reduction to add simplicity and reduce input H.P. requirements,
- All sprockets on the main drive system equipped with S-taper hubs for ease of maintenance,
- Rear bumper for added protection against damage;
- All Mixer Feeders come complete with either of several makes of basic read up, read down electronic scale systems

Options

- Choice of various different electronic scale indicators,
- Remote indicator and remote zeroing capabilities
- Hydraulic raise and lower discharge chute,
- Special discharge lengths,
- Hydraulic flap on discharge chute,
- Manual flap on discharge chute,
- Magnet in discharge flap,
- Diverter valve for tractor with only one set of remotes
- Built-in knife kits
- Stainless steel liners

All LUCK//NOW mixers may be ordered as stationary units or truck mounted units



Discharge Chute

Precise feed delivery - a discharge (shown at the left) that can unload at the rate you would like. The hydraulically driven orbit motor driving the twin 12" diameter augers can unload as fast or as slow as you require. Large clean-out openings allow ease of cleaning

and draining in the winter months to avoid freezing.

Greasable bearings are set away from the back of the discharge for ease of replacement and longer life

The discharge is also available with optional hydraulic raise and lower

Make Your Best Deal Now On A Luck//Now Mixer-Feeder and the Advantage of the **FALL PROMOTION** with

Cummings & Bricker's E-Z FLEX financing.

0% - 24 **4.9% - 36** **5.9% - 48**
Month Month Month

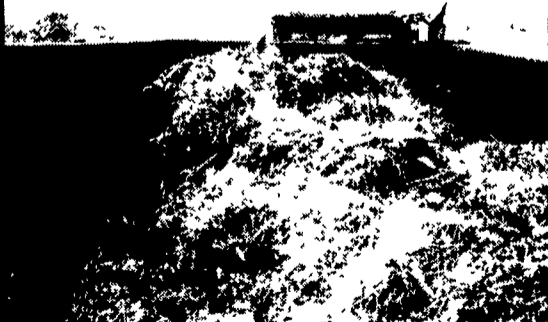
Great Mixers, Great Rates, Great Savings!!

Effective now through October 31st (with mixer delivery by December 15, 1998), Cummings & Bricker is offering great savings and great finance rates through the EZ FLEX Financing program. All models of Lucknow mixers are available for 0% interest for 24 months, 4.9% interest for 36 months or 5.9% interest for 48 months or cash discounts in lieu of financing.

NEW For 1998 LUCK//NOW HAYMASTER 500

As with all LUCKNOW products, the HAYMASTER 500 is built for durability and performance.

The HAYMASTER processes whole round bales, whole large and small square bales, wet or dry, and mixes other commodities producing an ideal TOTAL MIX RATION.



The planetary drive ensures smooth operation with minimal horsepower requirement.



Carbide knives with tungsten edges work in conjunction with adjustable ledger bars to vary chop length for your requirements.

Low loading height eliminates the need for extra high front-end loaders.



Contact Your Nearest LUCK//NOW Dealer For Additional Information

PENNSYLVANIA	Sandy Lake	Owasco
Bloomsburg W. F. Welliver & Sons	Sandy Lake Implement Co.	Merrill Badman
Canton Hess Farm Equipment	MARYLAND	Salem Salem Farm Supply
Carlisle R. W. Equipment	Frederick Doody Mechanical Service	Trumansburg Ed Switzer
Clifford North East Dist. & Equipment	Massey Jones Dairy Service	Varysburg Perl Equipment
Glen Rock Wertz Farm Equipment	NEW JERSEY	Watertown Waldroff Farm Equipment
Greencastle Meyers Implement	Sussex William Sytsema, Inc.	Westfield Laporte Farm Equipment
Leola M. M. Weaver & Sons, Inc.	VIRGINIA	NEW HAMPSHIRE
Loysville McMillen Bros Inc	Rocky Mount Price Equipment, Inc.	Greenville Frost Farm Equipment
Martinsburg Wineland Equipment	NEW YORK	Keene Keats, Inc
Mifflinburg Dennis Hess	Batavia Tri County Tractor	Walpole R N Johnson
	Chemung Van Dusen Machinery	VERMONT
	Morrisville Center State Ag Service	Orleans Desmarais Equipment
	North Java Java Farm Supply	



Distributed By: **CUMMINGS and BRICKER, Inc.**

100 Stover Drive
Carlisle, PA 17013
717/249-6720

100-120 Lehigh Ave - P.O. Box 928
Batavia, New York 14021-0928
716/343-5411

Serving Farmers Through Farm Equipment Dealers Since 1961