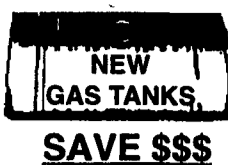
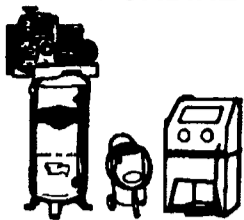




**SAND BLASTERS & BLAST CABINETS**



4294 E. HARRISBURG PIKE  
DEPARTMENT LF CATALOG  
MIDDLETOWN, PA 17057  
(717) 944-0318  
Route 230 Between  
Elizabethtown & Middletown



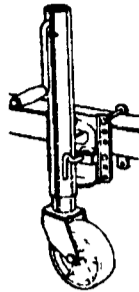
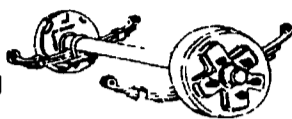
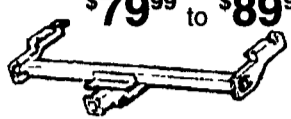
**TOOLS AND EQUIPMENT**

**FREE CATALOG CALL OR WRITE NOW!!**

**AUTOBODY PARTS, PAINTS & SUPPLIES**

**BUILD OR REPAIR YOUR TRAILER. WE HAVE PARTS.**

**MOST CLASS III HITCHES \$79<sup>99</sup> to \$89<sup>99</sup>**



**USED 4x4's Pickup's, Bronco's & Blazer - Call For Our Low Prices**



**NEW UTILITY TRAILERS**  
3,000 GVW, Extra Heavy Frames  
w/Treated Lumber Deck, Lights,  
Chains, Etc Included!!!  
5'x10' Deck.....\$750  
6'4"x12' Deck.....\$875  
Add-On Landscape  
Ramp/Gate.....\$145

**WE BUILD OUR OWN TRAILERS**



**"NEW" 16' Deck Car Hauler**  
Has Two 24" Wide Diamond Steel Runners, Tube Steel Frame  
4-Wheel Brakes Safety Breakaway Kit & Full Lighting  
Beavertail & Ramps, Removable Left Fender & More For **\$1,799**

**Hours: Tues.-Fri. 9 AM - 6 PM Saturday 9 AM - 2 PM Closed: Sunday & Monday**

FORD FORD FORD FORD FORD FORD FORD

# KELLER BROS.

(Buffalo Springs) Lebanon, PA

**717-949-2000 or 1-800-363-2767**

**HEAVY DUTY & LIGHT TRUCK CENTER**

**END-OF-SEASON SPECIAL**  
94 MUSTANG GT CONVERTIBLE  
Special \$16,735



**1997 FORD F250**  
XL, AT, V8, A/C,  
13,000 Miles



**1997 FORD F350 STAKE BODY**  
Power Stroke Diesel,  
4x4 AT, A/C, 6 Speed,  
Dual Rear Wheels,  
XLT Trim



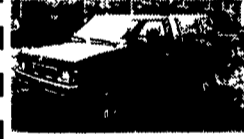
**1997 CHEV 2500 SUPER CAB**  
AT,V8, Low Miles,  
White



**1994 FORD RANGER**  
Supercab, 4x4, 4.0,  
5-Spd, Loaded,  
Very Clean



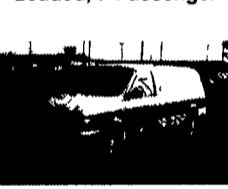
**1997 NISSAN 4X4 SUPER CAB**  
5 Speed, AC, Cass.,  
9,400 Miles, Bal.  
Factory Warranty, Red



**1995 FORD F150 SUPERCAB XLT**  
4x2, AT, V8, Nice Truck



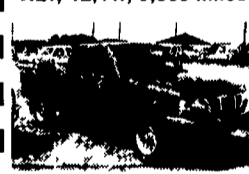
**1992 PLYMOUTH GAND VOYAGER**  
Loaded, 7-Passenger



**1999 FORD F550 DUMP TRUCK**  
Power Stroke Diesel,  
4x4, AT, A/C, 12 Ft.  
Dump Box



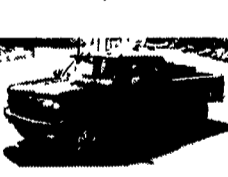
**1998 FORD RANGER SUPERCAB 4X4**  
XLT, 4L, AT, 5,000 Miles



**WINDSTARS**  
2 - 1996 w/Quad  
Captains Seats  
2 - Used 1998s



**1995 FORD F250 SUPERCAB 4X4**  
Power Stroke Diesel,  
XLT Trim, Low Miles



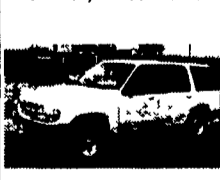
**1989 LINCOLN TOWN CAR**  
Loaded, Leather  
\$6,900



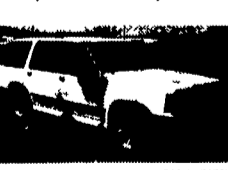
**1995 TOYOTA TACOMA**  
Super Cab, 4x4, 5 Spd.,  
A/C, One Owner, Low  
Miles



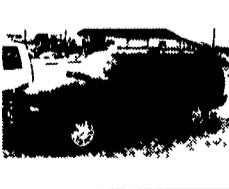
**1996 FORD EXPLORER**  
XLT, 4x4, Low Miles, 1  
Owner, Just Traded



**1994 FORD EXPLORER XLT**  
4X4, V6, AT, A/C, PW,  
PL, One Owner, Clean



**1996 GMC JIMMY**  
4-Dr, Black, Loaded,  
SLE, Pkg.  
Alum. Wheels



**1993 GMC SONOMA**  
Super Cab, 4x2, AT  
SLE Pkg, Low Mile



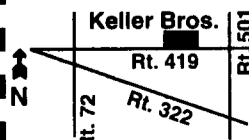
**1994 DODGE GRAND CARAVAN** Loaded,  
Low Miles, Local Trade



**1994 FORD F150**  
4x4, XLT, AT, V8



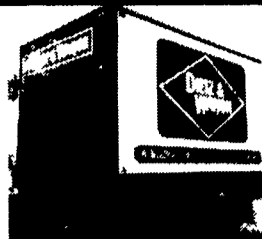
**86 F350 DUALY**  
XL, Diesel, AT, A/C,  
Very Clean



**KELLER BROS. FORD HAS SERVED CENTRAL PENNA. AREA FOR MORE THAN 75 YEARS.**

FORD FORD FORD FORD FORD FORD FORD

## 35 TRUCKS & TRAILERS



**12' Reefer Body,**  
under body refrigeration unit,  
Uses 220 electric. Has damage.



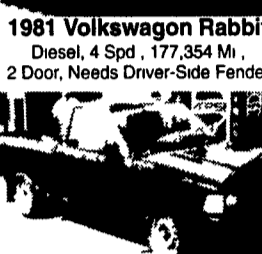
**3- 40' Steel Flatbed Trailers**  
with sliding tandems, all in good condition



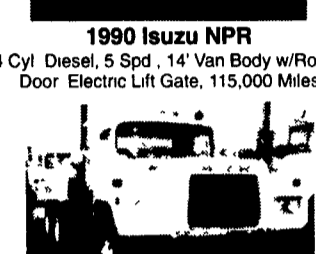
**1981 Volkswagen Rabbit**  
Diesel, 4 Spd, 177,354 Mi,  
2 Door, Needs Driver-Side Fender



**1990 Isuzu NPR**  
4 Cyl Diesel, 5 Spd, 14' Van Body w/Rollup  
Door Electric Lift Gate, 115,000 Miles



**1993 Toyota Pickup**  
4 Cyl, 5 Spd Trans, AM-FM Radio,  
A/C, Excellent Condition, High Mileage



**1977 Mack R Model tractors,**  
300 engine, 5 spd, 38,000 lb rears,  
power steering



**1500 gallon Sludge Tank**  
w/2cyl Deutz Diesel

**WE BUILD OUR OWN TRAILERS**



**Aluminum Tanker/Trailers**  
7500 gal and up

Hours: Tues.-Fri. 9 AM - 6 PM Saturday 9 AM - 2 PM Closed: Sunday & Monday

FORD FORD FORD FORD FORD FORD FORD

# KELLER BROS.

(Buffalo Springs) Lebanon, PA

**717-949-2000 or 1-800-363-2767**

**HEAVY DUTY & LIGHT TRUCK CENTER**

**END-OF-SEASON SPECIAL**  
94 MUSTANG GT CONVERTIBLE  
Special \$16,735



**1997 FORD F250**  
XL, AT, V8, A/C,  
13,000 Miles



**1997 FORD F350 STAKE BODY**  
Power Stroke Diesel,  
4x4 AT, A/C, 6 Speed,  
Dual Rear Wheels,  
XLT Trim



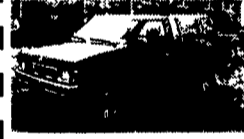
**1997 CHEV 2500 SUPER CAB**  
AT,V8, Low Miles,  
White



**1994 FORD RANGER**  
Supercab, 4x4, 4.0,  
5-Spd, Loaded,  
Very Clean



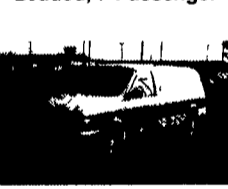
**1997 NISSAN 4X4 SUPER CAB**  
5 Speed, AC, Cass.,  
9,400 Miles, Bal.  
Factory Warranty, Red



**1995 FORD F150 SUPERCAB XLT**  
4x2, AT, V8, Nice Truck



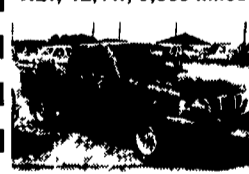
**1992 PLYMOUTH GAND VOYAGER**  
Loaded, 7-Passenger



**1999 FORD F550 DUMP TRUCK**  
Power Stroke Diesel,  
4x4, AT, A/C, 12 Ft.  
Dump Box



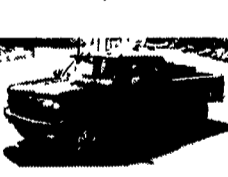
**1998 FORD RANGER SUPERCAB 4X4**  
XLT, 4L, AT, 5,000 Miles



**WINDSTARS**  
2 - 1996 w/Quad  
Captains Seats  
2 - Used 1998s



**1995 FORD F250 SUPERCAB 4X4**  
Power Stroke Diesel,  
XLT Trim, Low Miles



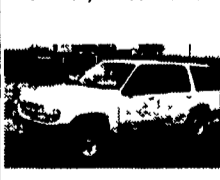
**1989 LINCOLN TOWN CAR**  
Loaded, Leather  
\$6,900



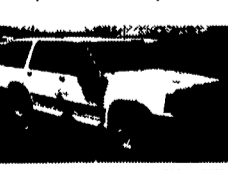
**1995 TOYOTA TACOMA**  
Super Cab, 4x4, 5 Spd.,  
A/C, One Owner, Low  
Miles



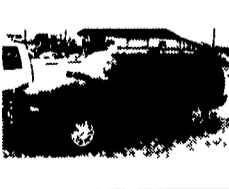
**1996 FORD EXPLORER**  
XLT, 4x4, Low Miles, 1  
Owner, Just Traded



**1994 FORD EXPLORER XLT**  
4X4, V6, AT, A/C, PW,  
PL, One Owner, Clean



**1996 GMC JIMMY**  
4-Dr, Black, Loaded,  
SLE, Pkg.  
Alum. Wheels



**1993 GMC SONOMA**  
Super Cab, 4x2, AT  
SLE Pkg, Low Mile



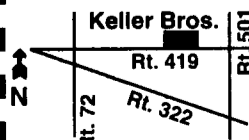
**1994 DODGE GRAND CARAVAN** Loaded,  
Low Miles, Local Trade



**1994 FORD F150**  
4x4, XLT, AT, V8

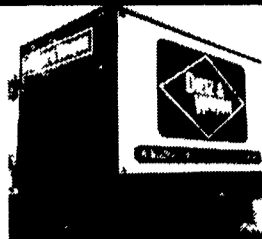


**86 F350 DUALY**  
XL, Diesel, AT, A/C,  
Very Clean

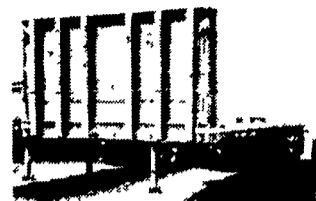


**KELLER BROS. FORD HAS SERVED CENTRAL PENNA. AREA FOR MORE THAN 75 YEARS.**

FORD FORD FORD FORD FORD FORD FORD



**12' Reefer Body,**  
under body refrigeration unit,  
Uses 220 electric. Has damage.



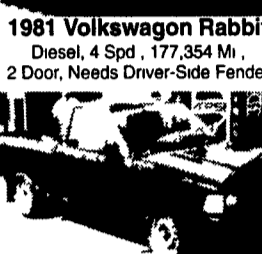
**3- 40' Steel Flatbed Trailers**  
with sliding tandems, all in good condition



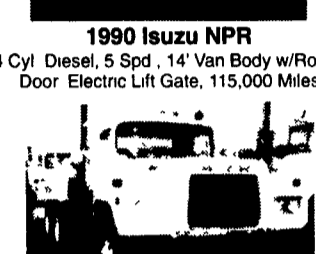
**1981 Volkswagen Rabbit**  
Diesel, 4 Spd, 177,354 Mi,  
2 Door, Needs Driver-Side Fender



**1990 Isuzu NPR**  
4 Cyl Diesel, 5 Spd, 14' Van Body w/Rollup  
Door Electric Lift Gate, 115,000 Miles



**1993 Toyota Pickup**  
4 Cyl, 5 Spd Trans, AM-FM Radio,  
A/C, Excellent Condition, High Mileage



**1977 Mack R Model tractors,**  
300 engine, 5 spd, 38,000 lb rears,  
power steering



**1500 gallon Sludge Tank**  
w/2cyl Deutz Diesel

**WE BUILD OUR OWN TRAILERS**



**Aluminum Tanker/Trailers**  
7500 gal and up

Hours: Tues.-Fri. 9 AM - 6 PM Saturday 9 AM - 2 PM Closed: Sunday & Monday

FORD FORD FORD FORD FORD FORD FORD

# KELLER BROS.

(Buffalo Springs) Lebanon, PA

**717-949-2000 or 1-800-363-2767**

**HEAVY DUTY & LIGHT TRUCK CENTER**

**END-OF-SEASON SPECIAL**  
94 MUSTANG GT CONVERTIBLE  
Special \$16,735



**1997 FORD F250**  
XL, AT, V8, A/C,  
13,000 Miles



**1997 FORD F350 STAKE BODY**  
Power Stroke Diesel,  
4x4 AT, A/C, 6 Speed,  
Dual Rear Wheels,  
XLT Trim



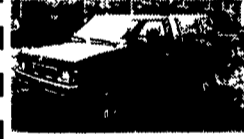
**1997 CHEV 2500 SUPER CAB**  
AT,V8, Low Miles,  
White



**1994 FORD RANGER**  
Supercab, 4x4, 4.0,  
5-Spd, Loaded,  
Very Clean



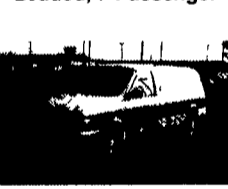
**1997 NISSAN 4X4 SUPER CAB**  
5 Speed, AC, Cass.,  
9,400 Miles, Bal.  
Factory Warranty, Red



**1995 FORD F150 SUPERCAB XLT**  
4x2, AT, V8, Nice Truck



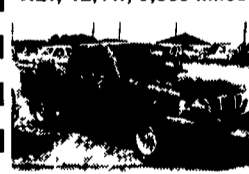
**1992 PLYMOUTH GAND VOYAGER**  
Loaded, 7-Passenger



**1999 FORD F550 DUMP TRUCK**  
Power Stroke Diesel,  
4x4, AT, A/C, 12 Ft.  
Dump Box



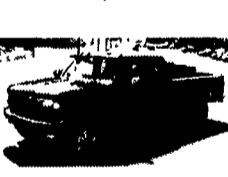
**1998 FORD RANGER SUPERCAB 4X4**  
XLT, 4L, AT, 5,000 Miles



**WINDSTARS**  
2 - 1996 w/Quad  
Captains Seats  
2 - Used 1998s



**1995 FORD F250 SUPERCAB 4X4**  
Power Stroke Diesel,  
XLT Trim, Low Miles



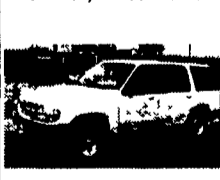
**1989 LINCOLN TOWN CAR**  
Loaded, Leather  
\$6,900



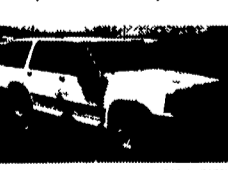
**1995 TOYOTA TACOMA**  
Super Cab, 4x4, 5 Spd.,  
A/C, One Owner, Low  
Miles



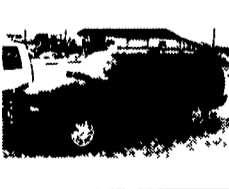
**1996 FORD EXPLORER**  
XLT, 4x4, Low Miles, 1  
Owner, Just Traded



**1994 FORD EXPLORER XLT**  
4X4, V6, AT, A/C, PW,  
PL, One Owner, Clean



**1996 GMC JIMMY**  
4-Dr, Black, Loaded,  
SLE, Pkg.  
Alum. Wheels



**1993 GMC SONOMA**  
Super Cab, 4x2, AT  
SLE Pkg, Low Mile



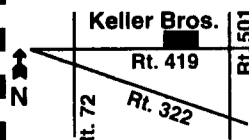
**1994 DODGE GRAND CARAVAN** Loaded,  
Low Miles, Local Trade



**1994 FORD F150**  
4x4, XLT, AT, V8

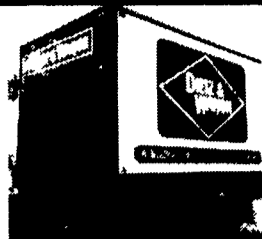


**86 F350 DUALY**  
XL, Diesel, AT, A/C,  
Very Clean



**KELLER BROS. FORD HAS SERVED CENTRAL PENNA. AREA FOR MORE THAN 75 YEARS.**

FORD FORD FORD FORD FORD FORD FORD



**12' Reefer Body,**  
under body refrigeration unit,  
Uses 220 electric. Has damage.



**3- 40' Steel Flatbed Trailers**  
with sliding tandems, all in good condition