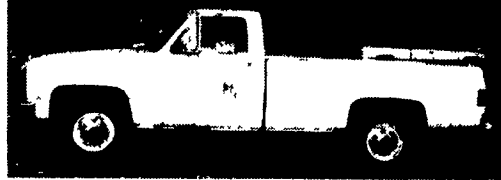


1977 Mack - V686T - Single Axle 300 Engine, Power Steering, With Dumpster Unit On Back - and Two Containers. Good Condition \$6,500.
 Also Have One 3200 CAT Engine - \$2,500.
Bradley's Truck Parts
 Nottingham, PA 610-932-8994



86 Chevy 1 Ton 454 Auto,
 75,000 Original Miles
\$4,500 OBO
Taneytown
Farm Equipment
410/751-1500

TRUCKERS

27' RATCHETS.....\$15.95
 WINCH STRAPS.....\$12.95
 RUBBER T. STRAPS...54¢

COMPLETE ROLL TARP SYSTEMS
 TIRONIE TARPS

(800) 874-2928 • FAX: (717) 584-3127

Quic'n-Easy
 RECEIVER HITCH BY DMI™

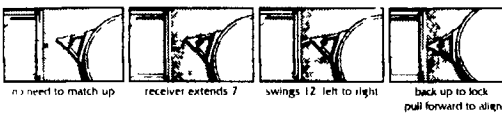
The Latest In-Tow-Vation!



Cushioned
 2" Receiver
 Hitch

- Fits under your truck bumper, mounting directly to your truck frame
- Brings the receiver to your load - extends 7" and swings 12"
- Exclusive Proximity Hook up - one person gets it right the first time
- Spring "Cush'n" takes the push/pull out of towing lowering stress on the driver and truck drive train
- Tows whatever your truck is rated to tow - exceeds Class IV certification
- Accepts a variety of adapters drawbar ball step up or step down pintle hook and weight distribution system

Never Miss a Hitch Again. **DMI**



Weaver Distributing
1-800-Weaver-D

RR2, Box 470, Fredericksburg, PA 17026

LESHER Mack
SALES & SERVICE

2700 Cumberland Sts. (Route 422 West) Lebanon, Pa. 17042



1993 Mack MS250
 190 HP, 6 Spd.,
 228" WB, A/C, PS,
 Cab & Chassis,
 Rebuilt Trans with
 New Clutch

LEASE IT!

1999 Isuzu NPR 14 Ft.
 Supreme Van Body,
 Call For Details
 Ask For Leasing Dept



NEED A SLEEPER OR DAYCAB?

Sleeper boxes can be removed - plenty to choose from 1994's - 1995's

Nice - Clean Trucks

E7-350 RTLO14610B

10 Spds, DS404 - 3 90R on
 Air, Steel Disc Hub Pilot,
 295/75R 22 5 192 WB,
 42" Highrise, 440,000 Miles
 & Under



717-273-4535

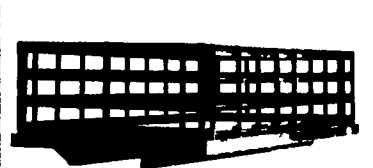
Obeco **IT'S THE BEST PLATFORM MONEY CAN BUY... AND IT'S PART OF EVERY OBECO TRUCK BODY BUILT**

OBECO STAKELESS



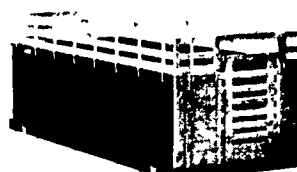
Maximum grain capacity Rugged construction 14-gauge, 60" seamless steel Die-formed vertical ribs on 12" centers 3-way rear-gate system Truck lengths: 18, 20' 22' 24' Height 60"

STEEL CITY STAKES



Adapts perfectly to several hauling needs 16-gauge corrugated steel slats welded to 14-inch gauge steel stakes Lengths: 8-24 feet Height 40" Also available with hardwood slats riveted to hardwood stakes

OBECO STEEL SIDES



Big load muscle 16-gauge, cold-rolled, die-formed, corrugated steel Optional foldowns, tip-tops. Available lengths 8'-24' Available heights: 40", 48", 54"

OBECO HOISTS



Matched to your hauling needs! Twin Cylinder models designed for bodies up to 24' and capacities of 32 tons. Single cylinder hoists, up to 16' capacities up to 21 tons

Obeco **UNI SYSTEM**



ANNVILLE EQUIPMENT CO.

470 Palmyra-Bellgrove Road, Annaville, PA 17003

717-867-4631 1-800-233-0520

We provide parts & service for new leader spreaders. Building the best since 1939.

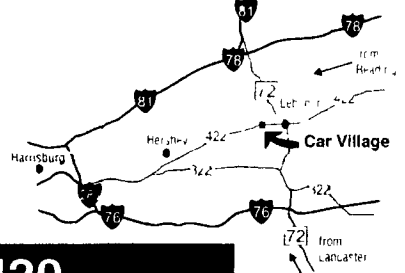
Business Hours:
 Mon.-Fri. 9 to 9;
 Sat. 9-4

RTE. 422 WEST
 LEBANON, PA

(Across From Lebanon Valley Mall)

CAR VILLAGE

HEAVY DUTY TRUCKS



PHONE 717-274-2000 Toll Free 1-800-650-1420



4x4 QUAD CAB
99 FORD F350 SUPER DUTY SUPER CAB
 6-1/2 Box, Nice to Drive Easy to Park, Powerstroke Turbo Diesel, Auto, A/C, CD Player & Plenty More



1 TON DIESEL 4WD 95 FORD F350 XLT
 Powerstroke turbo diesel, AF, A/C, Dual Tanks, Tow Pkg., Limited Slip 4:10 Gears



MECHANIC'S TRUCK 95 DODGE 3500
 Omaha Utility Boxes, 360 Magnum, V8, Auto, Very Clean, 32,000 Miles, New Tk Warr \$17,900



PERFECT FARM TRUCK
92 DODGE 250 HEAVY DUTY 2 WHEEL DRIVE
 Local 1 Owner Trade, 40,000 Original Miles, Cummins Turbo Diesel, Auto, A/C, Vinyl Floor \$13,500



FARM TRUCK 92 GMC 2500
 2 Wheel Drive Heavy Duty 8600 GVW, 350 I. V8, 5 Spd., A/C, Vinyl Floor, Runs Strong \$8,900



GREAT TOW MACHINE
93 DODGE CLUB CAB DUALLY
 Cimmins Turbo Diesel 5 Spc, Factory Trailer Pkg, A/C, Chrome Simulators, Very Nice, Only 66,000 Mi \$17,900



94 DODGE 2500 4X4 HEAVY DUTY 1/4 TON
 Cummins Turbo Diesel Auto, A/C, Loaded Fact Trailer Pkg., Chrome Wheels, Good Looker 62,000 Mi \$19,900



10 FT DUMP BODY
95 DODGE 3500
 Cummins Turbo Diesel, Auto, A/C, Only 11,000 Miles, Will Sell As Chassis



5 SP CLUB CAB DIESEL 4 WHEEL DRIVE
96 DODGE CLUB CAB
 Real Clean, Runs Strong, Cummins Turbo, 5 Sp., A/C, H D Trailer, Tow Pkg., Laramie SLT Pkg., Only 41,000 Mi



4X4 DUALLY 94 FORD F250 XLT SUPER CAB
 Like new - Only 28,000 Miles Turbo 7 3 Diesel, AT, A/C, Capt Chairs, Tow Pkg, Chrome Simulators, Mint Cond., MUST SEE



RACK BODY DUMP
94 CHEVY H.D. 3500
 Heavy 15,000 GVW High Output 6 5 Turbo Diesel, H.D. 5 Sp., A/C, 14 ft Body, Only 26,000 Clean Miles. Will Sell As Chassis



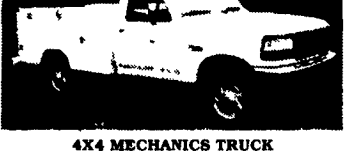
18 FT. BOX WITH REAR LIFT GATE
94 FORD SUPER DUTY
 Like New, Only 19,000 Miles, 460 V8, Auto, Therman Rear Lift, Will Sell As Chassis



OLDIE BUT GOODIE
87 FORD F250 4x4
 Diesel Power, 4 Sp Trans, Gooseneck & Class 3 Hitches, Vinyl Floor, Great Farm Tk. \$7,900



4 x 4 DIESEL
89 FORD F250 XL
 Heavy Duty 3/4 Ton 7 3 Diesel, Auto, A/C, Vinyl Seat & Floor, Great Farm Truck \$9,900



4X4 MECHANICS TRUCK
97 FORD F250 XL
 Like New, Only 100 Miles, 351 V8, Auto A/C, Stahl Body, New Tk Warranty Only \$23,900



L-PAK DUMP TK
94 GMC H D 3500
 Heavy 15,000 GVW, 6 5 Turbo Diesel, H A 5 Sp., A/C, Meyers Power Angle Plow, Runs Great, Only 70,000 Mi



4 x 4 UTILITY SUPER CAB
YOU'VE BEEN LOOKING FOR THIS ONE
 Reading Box, 6 5 Turbo Diesel, 5 Sp., A/C, 53,000 Miles



14 FT FLATBED
94 FORD SUPER DUTY
 Powerstroke Turbo Diesel, H D 5 Sp., Dual Tanks, Will Sell As Chassis



\$3,900 75 CHEVY C 60
 366 Gas V8, 4 Sp Trans., 2 Spd Axle, 8 25 x 20 Rubber, 21,000 GVW, No CDL Required



4 x 4 DUMP
88 FORD F350
 Real Clean Tk, Only 69,000 Miles, 460 I. V8, 5 Sp., Runs Nice



5 SP DIESEL SUPER CAB
97 FORD F250 4x4 HEAVY DUTY
 It's Perfect - Like New But Lots Cheaper, Only 15,000 Miles, Powerstroke 5 Sp A/C New Tk Warranty



5 SP DIESEL 4x4
92 FORD F250
 Heavy Duty 3/4 Ton 7 3 Diesel, 5 Sp A/C, Only 79,000 Miles



4x4 4 DOOR
99 FORD F350 SUPER DUTY
 It's A Beauty, Loaded XLT Captain Chairs Console Powerstroke Turbo Diesel AT A/C CD Player Trailer Tow Pkg New Tk Warranty



\$19,900
93 DODGE CLUB CAB DUALLY

4 Wheel Drive, Awesome Tow Machine, Only 45,000 Miles, Cummins Turbo Diesel, AT, A/C, Trailer Tow Package