

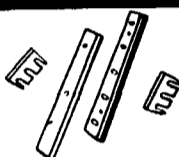
Wheat Thrasher, Belt Driven By Hit-&Miss 1 1/2 HP Engine. Built in Montgomery County, Pottstown, PA In The Year 1876. In Operating Condition, Original Paint & Historic Information Still Visible. (717)753-8426.

TOP SOIL SCREENER, completely rebuilt, 48"x56" screen, excellent condition, \$7500. 610-756-6259

TRACTOR PARTS: Engine kits, clutch kits, trans. parts, TA, PTO clutch kits, combine belts, JD corn head rollers, etc. Pre-season Special: 3pt hitch snowblowers, 4'-9". 717-286-7851.

Fox Super 1000 Chopper w/2-spd fan, works good. 2 heads... \$1,200
NH 30 Blower w/40 Gear Box & Hopper. Works Super..... \$1,300
717/272-0041

FORAGE KNIVES



JD, NH, IH, etc. Tungston Carbide Edge Knives from Weaver cannot be beat for Quality & Price
Give your chopper chopping fever with quality knives from WEAVER!
Weaver Distributing
1-800-Weaver-D
Fredericksburg, PA

ATTENTION FARMERS
If you have deteriorating concrete masonry or stone walls, have it repaired with GUNITE®
For Information and estimates call Martins Silo Repair (717) 445-9834

G&H Service, Inc.

Route 206 North, P.O. Drawer E
Newton, NJ 07860 (973) 383-3370
Outside NJ 1-800-545-1278
Toll Free NJ (Parts) 1-800-372-9207
JD FINANCING AVAILABLE TO QUALIFIED BUYERS
FAX: 973-383-5756

WHEEL LOADER BACKHOES

1983 Case 580E ROPS.....	\$18,500
1986 Ford 555B ROPS 2WD.....	\$14,750
1979 JD 300B SOLD	\$10,000
1988 JD 310C, ROPS, 4x4, SOLD	\$23,800
1987 JD 310C ROPS, good cond.....	\$21,000
1992 JD 410D cab, 4x4.....	\$46,000
1989 JD 410C, cab, 4x4.....	\$29,000
1984 JD 510B cab, extendable dipper.....	\$21,000
1985 JD 610B, cab, painted.....	\$17,000

MISCELLANEOUS

Imperial Eastman 208-T, hyd. hose cut off saw, 12" blade.....	\$1,850
Portable welding ventilator.....	\$500
1987 JD 482C forklift, SOLD	\$22,000

CRAWLER LOADER

1978 JD 755, 2-yard, rebuilt engine.....	\$17,500
--	----------

COMPACTION EQUIPMENT

Sakai SV91D, 84" drum, soil compactor, drum drive, 1700 hrs.....	\$38,500
Sakai SW41 double drum roller.....	\$22,500

TRAILERS & TRUCKS

Older 9-ton trailer, no ramps.....	\$500
1985 Eager Beaver 20HA air brakes, 20 ton.....	\$5,700
1975 Executive MFR. home, 440 Dodge.....	\$2,500
1976 Mack single axle dump truck.....	\$3,000
1978 12 ton elec. brake SOLD	\$1,800

HYUNDAI SAKAI TRAIL KING TRAMAC MUSTANG



Want To Buy John Deere Equipment - 70D, 590D & 490D/E

WHEEL LOADERS

1987 Dresser model 530, 3 1/4 yard, clean.....	\$33,000
1993 Hyundai HL25, 3-1/2 yard, good.....	\$68,000
1989 JD 210C, landscape loader w/ Gannon 3pt hitch, ROPS, & York Brake.....	\$20,500
1989 JD 444E, EROPS, V.G. Cond.....	\$35,600

SKID STEER LOADERS

1991 Toyota SDK10, 1700 lb. lift, air Boss tires.....	\$10,600
1988 Toyota SDK8, 1300 lb. lift, foam filled tires, backhoe attach., & front bucket.....	\$9,250
JD 24A diesel, 1400 lb. lift, 900 hrs.....	\$6,500
1993 Mustang 930A, 1000 lb. lift, cab, heater, bucket, 700 hrs.....	\$8,650
1997 Mustang 920E, 850 lb. lift, cab, heater, 90 hrs.....	\$14,500
1996 Mustang 2060, 1700 lb lift, 120 hrs.....	\$21,600

HYDRAULIC EXCAVATORS

1992 JD 70D w/blade, long stick.....	\$37,500
1987 JD 70D blade & off- SOLD	\$23,500
1995 JD 290D, 1400 hrs., Excellent.....	\$62,500
1992 JD 590D, 3000 hrs.....	\$77,000
1989 JD 690D, very good cond.....	\$54,500
1985 JD 790, runs well.....	\$35,000
1987 Mitsubishi Model R120-8, fair.....	\$18,000

AGRICULTURAL & MISCELLANEOUS

3 Yd. 444E Matenal bucket, new.....	\$2,400
Stanley MB 125 hammer, low hrs.....	\$3,500

ATTACHMENTS

Dresher PC-19, asphalt profiler, set up for skid steer loader, 19" width.....	\$3,500
93A Backhoe.....	\$2,500
9300 Backhoes, Good Condition.....	\$3,500/ea
Sweepster RHFA broom 6' for 3 pt. hitch tractor.....	\$900
Toyota Model 630, Trencher for Toyota Skid Steer.....	\$3,850
Winch for JD 450C w/log arch.....	\$5,000
4N1 bucket for JD 755 crawler loader.....	\$2,500
New 4N1 bucket for JD 455G.....	\$5,000

YORK COUNTY FARM EQUIPMENT

Emigsville, PA

717/764-6412. 717/764-5115

Dealer of new Woods Equipment & Parts



- Int. 2500 w/Loader
- AC 6140 4x4 w/Loader
- Ford 2110 Tractor w/Full Cab & New Woods Loader, 4x4
- Kubota L2350 (230 hrs)
- Int. 140 w/Loader
- Farmall 130 w/cultivator
- IH 424 (gas)
- MF 135 (gas)
- Ford 600
- Ford 3000 3-Cyl. Gas
- NI 323 1R Picker
- NH 33 & 38 Flail Choppers
- JD 894 Hay Rake
- Used Woods 121 Rotary Mower
- Woods HD 315 Rotary Mower
- Woods Spring Finish Mowers & Field Equipment in stock

At Last...

...a Boom Sprayer for multi-crop produce farmer that is affordable and will do the job from sweet corn to melon crops.



With features like...

- 24 ft one-side boom that allows for 50ft coverage between drive rows.
- Easy boom height adjustment from 2ft to 7 1/2 ft for sweet corn
- Hydraulic leveling on the go allows uniform boom height from the crop.
- 280 PSI, 28 GPM 3 diaphragm pump with power shaft for quick hookup.
- Adjustable wheel spacing and tongue height.
- Rubber mounted boom to absorb shock

With the high cost of chemicals, the right Sprayer is needed
Order Early, Supply Limited

Call 6-9 AM or 6-9 PM
PENNS CREEK WELDING & MFG.
(717) 837-1197

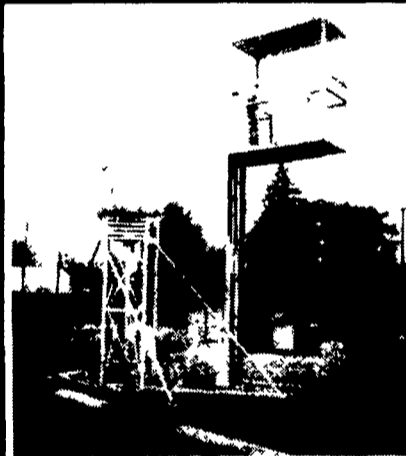
NH 778 Skidloader



55 HP, Diesel 2 Speed

\$5,900

717-369-4115



Surplus Inventory for sale including These lifts - Capacity ranging from 250 lbs to 3000 lbs, Computer grade type Transformers, ranging from 45KVA, 3 phase to 300 KVA Voltages 480/277 to 208-120VAC
Parts Motor starters, Fittings, Conduit and much, much more

Contact Person: Felix A. Maklouf

FAM INSTRUMENT/CONTROL SERVICES, INC.
Phone (717) 393-5437 Fax (717) 393-7236

D. S. SPREADER



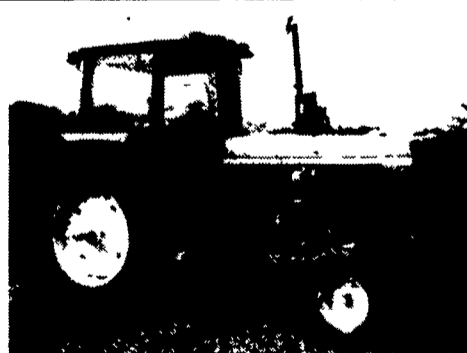
- 750-1500 Gallon
- Tank 10 ga. Corten Steel
- Bulge Ends
- Option: rear or front spinner (shown)
- Special orders accepted

D.S. Manufacturing
834 Pumping Station Rd.
Kirkwood, PA 17536
717-529-2282
Call 7:45-8:00 AM

LESTER HORNING

585 Indiantown Rd
Ephrata, PA 17522

717-738-1677



JD 4230 Diesel Quad. Trans, Dual Hyd.

TRACTORS

JD 2950 w/h-low, good cond	\$11,500
JD 455 diesel riding mower, nice	CALL
Kubota L2350 diesel, PS 25hp, 4x4 w/loader	\$10,500
JD 855 hydro, PS, w/72" belly mower, nice SOLD	\$8,900
JD F935 diesel w/72" front deck	\$4,950

HAY & FORAGE

NH 311 baler w/chute, late model	\$3,950
NH 570 baler w/chute	CALL
JD 346 baler w/#30 thrower, very nice	\$3,700
NH 782 harvester, elec controls, nice SOLD	\$1,700
JD 150 blower, late model	\$1,850
JD 3960 harvester, elec controls, nice	CALL
JD 5 1/2 hay head w/clutch	\$650

TILLAGE EQUIPMENT

Glenco 7T soil saver, good cond	\$3,800
JD 8300 drill, 18x6 single disc w/grass	\$1,650
Howard 4' tiller, 540 RPM, 3pt, new tines	\$850

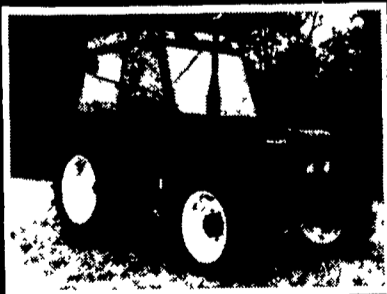
MANURE SPREADERS

NH 680 tandem axle, 287 bu, very nice	\$3,200
NH 680 w/tail gate, 287 bu	\$2,500



COMPARE VALUE & PRICE

New Zetor Tractors - 2 yr. Warranty



IN STOCK

- 6340.0 Open Station 4WD, 10-Speed, 70HP w/canopy
- 6340.2 w/cab, 4WD, 10-Speed, 70 HP, Shuttle Trans.
- 6340.2 w/cab, 4WD, 10-Speed, 70 HP, Shuttle Trans., Front & Rear PTO & 3pt Hitch

DEMOS GIVEN



Zetor FARM EQUIPMENT

- Lime & Manure Spreaders - 30 ft. max. spreading width, 11,000 lb. capacity
- Drum Mowers - 5.4 ft. width, 1,000 lb.
- Disc Mowers - 8.2 ft. transport width 7.8 ft.
- Loaders for all tractors

KERMIT K. KISTLER, INC.

New & Used Farm, Lawn & Garden Equipment
Since 1947
Rt. 143 LYNNPORT, PA 18066
610-298-2011
Hours: 8-5, Sat. 8-2
Sales & Service
Pick-up & Delivery