

WEEKLY LIVESTOCK SUMMARY

AUGUST 21, 1998
13 LIVESTOCK AUCTIONS

CATTLE 4954. Compared with 4621 head last week and 6372 head a year ago. Compared with last Friday's summary slaughter steers uneven, mostly steady, sl heifers 50 to 100 lower, sl cows steady to strong, bulls mostly steady.
SLAUGHTER STEERS High Choice & Prime 2-4 60.35-65.50, Choice 1-3 57.50-62.35, Select and Low Choice 2-3 55.00-60.00, Select 1-3 52.25-59.00, Standard 1-2 44.25-53.25
HOLSTEINS High Choice and Prime 2-3 54.50-58.25, Choice 2-3 51.00-55.50, Select 1-2 46.50-51.50
HEIFERS High Choice and Prime 57.50 61.25, Choice 2-4 52.50-58.50, Select 1-3 46.00-52.75
COWS Breaking Utility & Commercial 2-4 35.00-43.00 mostly 37.50-41.25, Cutter & Boning Utility 1-3 34.00-39.50, Canner and Low Cutter 1-2 27.00-33.00 Shells down to 23.00
BULLOCKS few Select 1-3 49.00-54.00
BULLS Yield Grade 1 1000-2400 lbs 44.50-52.75, Yield Grade 2 900-2000 lbs 40.00-45.00
FEEDER CATTLE STEERS Medium and Large 1 300-700 lbs 56.00-65.00, Medium and Large 2 325-750 lbs 43.00-50.75, HEIFERS Medium and Large 1 450-750 lbs 52.00-64.00, Medium and Large 2 300-700 lbs 37.00-46.00, BULLS Medium and Large 1 350-600 lbs 50.00-57.00, few to 65.00
CALVES 3553 Compared with 3482 head last week and 3405 head a year ago
VEALERS mostly steady Choice 180-350 lbs 70.00-95.00 Good 140-260 lbs 40.00 62.00, Standard and Low Good 80-120 lbs 22.00-36.00, Utility 55-100 lbs 10.00-26.00
FARM CALVES Holstein bull calves 5.00 to 15.00 lower, Holstein heifer calves active 10.00 to 20.00 higher No 1 Holstein bulls 90-120 lbs 50.00-96.00, No 2 85-120 lbs 34.00-67.00 No 1 Holstein heifers 80-120 lbs 100.00-210.00, few to 249.00, No 2 75.120 lbs 40.00-130.00 Beef type bulls and heifers 70-150 lbs 40.00-110.00
HOGS 2311 Compared with 2422 head last week and 2526 head a year ago. Barrows and gilts unevenly steady, sows steady.
BARROWS AND GILTS US 1-2 220-265 lbs 35.50-37.25, US 1-3 210-280 lbs 34.75-35.60, US 2-3 220-320 lbs 33.35-35.00, US 1-3 180-200 lbs 27.00-33.00 SOWS US 1-3 300-500 lbs 19.00-22.50, 500-700 lbs 21.00-24.00 BOARS 11.00-14.00
FEEDER PIGS 542. Compared with 398 head last week and 567 head a year ago Feeder pigs US 1-3 20-30 lbs 9.00 15.00, 35-55 lbs 15.00-27.00 --- per head
SHEEP 1815 Compared with 19712 head last week and 1577 head a year ago Slaughter lambs steady to 10.00 higher **SLAUGHTER LAMBS** Choice 25.45 lbs 100.00-150.00, 45-85 lbs 80.00 100.00, few to 130.00, 85-110 lbs 70.00-85.00, Good and Choice 50.100 lbs 50.00-70.00
SLAUGHTER SHEEP 20.00-40.00, few to 45.00
TWO GRADED FEEDER PIG SALES

1771 Compared 996 last week and 1206 head a year ago Feeder pigs steady to 10.00 higher US 1-2 35-50 lbs 56.00-64.00, few to 48.00, 50-60 lbs 46.00-58.00, 60-80 lbs 45.00-60.00, few to 70.00, 80-110 lbs 40.00-41.00, US 2-3 35-70 lbs 35.00-50.00, Slaughter 20-40 lbs 45.00-95.00, 40-70 lbs 24.00-60.00 --- per hundred weight.

MERCER LIVESTOCK AUCTION MERCER, PA
AUGUST 25, 1998

CATTLE 244 [PDA] Compared with last week's sale sl steers mostly steady, cows steady to 1.50 higher
SLAUGHTER STEERS Choice 2-3 1050-1475 lbs 58.00-61.00, couple 64.25, few 1500-1615 lbs 55.00-57.00, Select 1-3 52.00-56.25, Standard 44.25-51.00
HOLSTEINS few High Choice and Prime 1220-1520 lbs 54.75-55.75, Choice 2-3 1075-1715 lbs 52.00-55.25, Select 1-2 47.50-51.50
HEIFERS Few Low Choice and Select 1065-1285 lbs 55.00-59.50, few Standard 45.00-53.00
COWS Breakers 75-80% lean 34.25-40.50, Boners 80-85% lean 33.75-37.00, few to 39.00, Lean 85-90% lean 25.00-32.50 Shells down to 21.00
BULLS few Yield Grade 1 1120-1720 lbs 46.50-50.25, few Yield No 2 940-2360 lbs 38.50-45.00
FEEDER CATTLE STEERS few Medium 2 270-400 lbs 40.00-60.00, HEIFERS Medium 1 & 2 270-370 lbs 55.00-59.00, few Medium 2 370-665 lbs 43.00-49.00, BULLS Medium 1 250-375 lbs 58.00-68.00
CALVES 115 VEALERS couple Good 150 & 165 lbs 60.00 & 62.50, Standard and Good 70-115 lbs 20.00-35.00, Utility 60-85 lbs 10.00-23.00
FARM CALVES few No 1 Holstein bulls 120-125 lbs 60.00-75.00, 90-115 lbs 70.00-95.00, No 2 90-130 lbs 34.00-70.00 few No 1 Holstein heifers 105-130 lbs 170.00-205.00, few No 2 65-110 lbs 40.00-165.00 Beef type bulls and heifers 90-105 lbs 80.00-105.00
HOGS 53 BARROWS AND GILTS 49-54% lean 12 head 225-275 lbs 38.00-39.50
SOWS US 1-3 330-560 lbs 24.00-26.00
BOARS few 430-725 lbs 14.00
FEEDER PIGS 0 NO MARKET TEST'

SHEEP 26 **SLAUGHTER LAMBS** Good and Choice 60-85 lbs 65.75-68.00
SLAUGHTER SHEEP few 19.00-35.00
GOATS 1 One Medium Nanny 40.00 --- per head

EIGHTY-FOUR LIVESTOCK SALES, INC. EIGHTY-FOUR, PA
AUGUST 24, 1998

CATTLE 178 [PDA] Compared to last Monday's sale sl cows steady to 2.00 higher, bulls steady
SLAUGHTER STEERS couple Select 1-3 49.00 & 50.00
HOLSTEINS couple Select 1-2 47.50 & 48.00

HEIFERS few Standard 1-2 36.50-40.00
COWS Breakers 75-80% lean 36.50-39.50, Yield Grade 4 & 5 31.00-36.50, Boners 80-85% lean 32.00-37.50, Lean 85-90% lean 25.00-32.00 Shells 16.00-26.00
BULLS Yield Grade 1 990-1995 lbs 45.50-51.75, Yield Grade 2 1065-1690 lbs 39.00-43.50
FEEDER CATTLE STEERS Medium and Large 1 430-800 lbs 56.00-69.00, few Medium and Large 2 385-825 lbs 385-825 lbs 45.00-54.00, HEIFERS Medium and Large 1 300-825 lbs 53.75-63.00, few Medium and Large 2 300-940 lbs 42.50-52.50, BULLS few Medium and Large 1 385-600 lbs 57.00-63.00, Medium and Large 2 325-920 lbs 43.50-55.00
CALVES 153 [All calves sold per cwt]
VEALERS Standard and Good 90-120 lbs 25.00-35.00, 70-85 lbs 22.50-32.00, Utility 50-75 lbs 10.00-21.00
FARM CALVES Holstein bulls steady to 10.00 higher No 1 Holstein bulls 90-125 lbs 65.00-101.00 mostly 80.00-95.00, No 2 75-115 lbs 35.00-70.00, couple No 1 Holstein heifers 85-95 lbs 120.00-145.00, few No 2 80-105 lbs 42.50-80.00
Beef type bulls and heifers 85-110 lbs 52.50-65.00, 220-295 lbs 58.00-79.00
HOGS 41 BARROWS AND GILTS 49-54% lean couple 4-H 245-280 lbs 39.00-45.50, 45-50% lean 210-280 lbs 35.00 37.50, 40-45% lean 245-295 lbs 32.00-36.00
SOWS US 1-3 325-645 lbs 23.35-28.50, couple Medium 215-290 lbs 21.50-23.00
BOARS 240-580 lbs 15.00-18.00
FEEDER PIGS 5 Two US 1-3 38 lbs 22.00, three 50 lbs 21.00 --- per head
SHEEP 235 Slaughter lambs steady
SLAUGHTER LAMBS few 4-H High Choice and Prime 85-120 lbs 71.00-87.00, Choice 55-75 lbs 74.50-85.50, 80-100 lbs 73.00-80.00, Good and Choice 80-110 lbs 61.00-70.00
FEEDER LAMBS Good and Choice 40-75 lbs 52.00-68.00
SLAUGHTER SHEEP 20.00-39.00, few Yearlings 46.00-52.00
GOATS 25 Medium Billies 41.00-54.00, one Medium Nanny 41.00, Large Kids 27.00-40.00, Small 12.00-22.00 --- per head

95-110 lbs 60.00-85.00, No 2 90-120 lbs 42.00-80.00

HOGS 0 NO MARKET TEST'
FEEDER PIGS 97 US 1-3 19.00-30.00 --- per head
SHEEP 31 **SLAUGHTER LAMBS** Choice 30-50 lbs 130.00-160.00, 50-70 lbs 85.00-95.00
SLAUGHTER SHEEP 25.00-45.00
GOATS 57 Large Nannies 55.00-70.00, Medium 44.00-60.00, Large Kids 40.00-52.00, Small 18.00-35.00 --- per head

Four States Livestock

Hagerstown, Md
August 26, 1998

Report supplied by Auction
SLAUGHTER COWS: 75 HEAD. UTILITY 35.00-40.00; HIGH DRESSING 40.00-42.00, 1 AT 44.75; CANNERS 32.00 DOWN.

BULLS: 7 HEAD. YG#1 1350-1700 LBS. TO 46.50; 1 HIGH DRESSING AT 51.75; YG#2 43.50-45.00.
FED STEERS: 1 CHOICE 1550 LBS. AT 56.00; SELECT 1200-1400 LBS. 52.00-54.00.

HEIFERS: DAIRY CULLS 1200-1700 LBS. 40.00-42.00.
VEAL CALVES: 122 HEAD. CHOICE 300-400 LBS. 64.00-76.00; CULLS 85-110 LBS. 25.00-33.00, 60-80 LBS. 16.00-26.00.

FARM CALVES: HOLSTEIN BULLS #1 95-120 LBS. 65.00-80.00; LATE SALES 50.00-60.00; 90-95 LBS. 35.00-55.00; HOLSTEIN HEIFERS #1 90-120 LBS. 125.00-170.00; #2 80-100 LBS. 37.00-70.00; BEEF X BULLS 60.00-90.00; HEIFERS TO 51.00.

BUTCHER HOGS: NO TOPS OFFERED; #1&3 255 LBS. TO 31.25.
STOCK CATTLE: 85 HEAD. STEERS FEW OFFERED.

HEIFERS: 300-500 LBS. 56.00-64.00; 500-700 LBS. 54.00-57.00; 800-900 LBS. 48.00-53.00.

BULLS: 200-400 LBS. 60.00-70.00; 400-600 LBS. 60.00-71.00.

DAIRY REPLACEMENTS: LARGE SPRINGERS 900.00-1025.00; MED. FRESH TO 800.00; SMALL HOLSTEIN HEIFERS 200.00-250.00.
SHEEP: 27.00-35.00.

LAMBS: CHOICE 110-125 LBS. 63.00-66.00; 80-100 LBS. 65.00-73.00. PIGS AND SHOATS: NONE.
SOWS: 300-450 LBS. 16.00-19.75; 450-650 LBS. 18.00-22.75.

BOARS: 12.50.
SPECIAL FALL FEEDER CATTLE SALES WED. EVENINGS AT FOUR STATE LIVESTOCK SALES SEPT. 9 AND 30; OCT. 14 AND 28; NOV. 11.

Friend's Stockyard Inc.

Accident, Md. 21520
Report Supplied by Auction
August 24, 1998

STOCK BULLS AND STEERS (200-500 LBS.) 52.00-72.50.
STOCK HEIFERS: 36.00-64.50.
SLAUGHTER STEERS: GOOD TO CHOICE 58.00-61.50; MEDIUM TO GOOD 52.00-58.00, HEAVY CHOICE OVER 1450 LB. 55.00-59.00.
HOLSTEIN STEERS: HEAVY

CHOICE 39.00-52.25, LIGHT 38.00-45.00.
SLAUGHTER HEIFERS: GOOD TO CHOICE 57.50-60.00; MEDIUM TO GOOD 47.00-58.00.
BULLS: HEAVY 42.50-49.00, LIGHT 38.00-47.00.
COWS: UTILITY (HOLSTEIN) 35.00-40.50, COMMERCIAL TO GOOD 31.00-36.25, CULL COWS 30.00 AND DOWN.
VEALS: GOOD TO CHOICE 50.00-68.00, MEDIUM TO GOOD 20.00-47.00.
BOB CALVES: 30.00 AND DOWN. HOLSTEIN BULL CALVES --- RETURN TO FARM (90 TO 120 LB.)-UP TO 80.00.
HOLSTEIN HEIFER CALVES --- RETURN TO FARM (90 TO 120 LB.)-UP TO 165.00.
BEEF CROSS CALVES --- RETURN TO FARM UP TO 85.00.
HOGS: TOP QUALITY UP TO 36.75, HEAVY UP TO 35.00, LIGHT UP TO 34.00.
SOWS: 22.00-32.25.
MALE HOGS: 12.00-25.25.
LAMBS, LIGHT AND FEEDER, NONE AVAILABLE.
SHEEP: 20.00-32.00.
LIVESTOCK PRICES ARE ALL GIVEN PER HUNDRED WEIGHT!

Grantsville Livestock

Grantsville, Maryland
Report Supplied by Auction
Sat., August 22, 1998

STOCK BULLS AND STEERS 200-500 LBS. 50.00-72.00.
STOCK HEIFERS 55.00-62.00.
SLAUGHTER STEERS GOOD TO CHOICE UP TO 59.00; MEDIUM TO GOOD 45.00-53.00.

HOLSTEIN STEERS GOOD 41.50-47.50; LIGHT 40.00-47.00.
SLAUGHTER HEIFERS GOOD TO CHOICE UP TO 58.75; MEDIUM TO GOOD 42.00-51.00.

BULLS: HEAVY 41.00-49.50, LIGHT 40.00-48.50.

COWS: UTILITY HOLSTEINS 36.00-38.50, CANNERS 31.00-34.50, CULLS 27.00 AND DOWN.

VEALS GOOD TO CHOICE UP TO 85.00, MEDIUM TO GOOD 35.00-55.00.
BOB CALVES: 25.00 AND DOWN.
HOLSTEIN BULL CALVES RETURN TO FARM: 90-120 LBS. UP TO 72.00.
HOLSTEIN HEIFER CALVES RETURN TO FARM UP, NONE AVAILABLE.

BEEF X CALVES RETURN TO FARM, NONE AVAILABLE.
HOGS: TOP QUALITY 34.00-36.00, HEAVY 32.00-35.00, LIGHT 30.00-35.00, FEEDER PIGS BY THE HEAD, UP TO 35.00.

SOWS: UP TO 24.50.
MALE HOGS: UP TO 15.00.
LAMBS: 70-85 LBS. UP TO 78.00; 85-125 LBS. UP TO 75.00; 30-60 LBS. UP TO 70.00; CULLS 60.00 AND DOWN.
SHEEP: UP TO 30.00.
GOATS: ALL BY THE HEAD, LARGE 40.00-80.00; MEDIUM 20.00-50.00; SMALL 10.00-35.00.

6th ANNIVERSARY - TRUCKLOAD SALE

Thurs., Fri. & Sat. September 10, 11 & 12

Sale Hours: Thurs. & Fri. 7:30 a.m. to 8 p.m., Sat. 8 a.m. to 2 p.m.

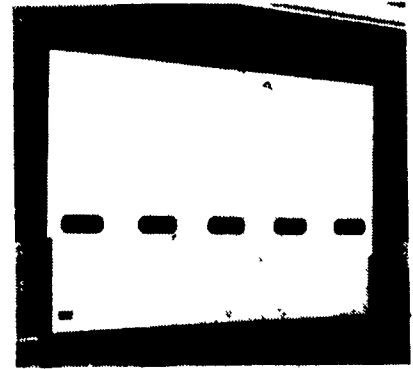
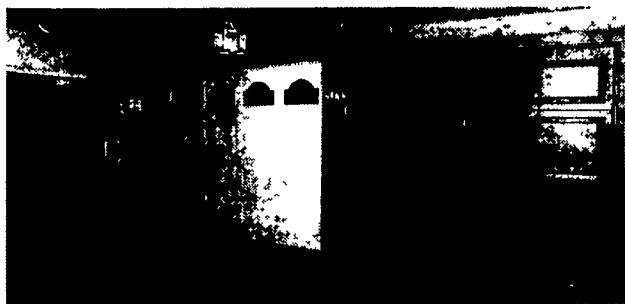
Factory Direct Discounts

Featuring...

RAYNOR GARAGE DOORS

3 BIG DAYS

FREE REFRESHMENTS



.... VISIT OUR LARGE SHOWROOM

2255 W. Main St., Ephrata, Pa 17522
717-733-7570 • 1-800-285-6826

Commercial & Industrial Doors