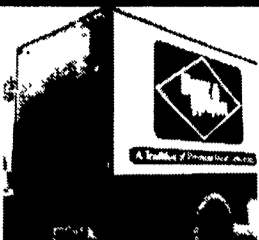


35 TRUCKS & TRAILERS



12' Reefer Body, under body refrigeration unit, Uses 220 electric Has damage



1981 Volkswagon Rabbit Diesel 4 Spd 177 354 Mi 2 Door Needs Driver Side Fender



3- 40' Steel Flatbed Trailers with sliding tandems all in good condition



1990 Isuzu NPR 4 Cyl Diesel 5 Spd 14 Van Body w/Rollup Door Electric Lift Gate 115 000 Miles



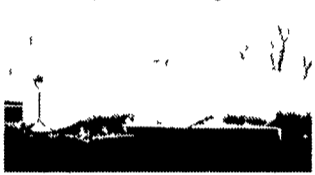
1993 Toyota Pickup 4 Cyl 5 Spd Trans AM-FM Radio A/C, Excellent Condition High Mileage



1977 Mack R Model tractors, 300 engine 5 spd, 38 000 lb rears power steering



1500 gallon Sludge Tank w/2cyl Deutz Diesel



Aluminum Tanker/Trailers 7500 gal and up



New flatbeds available Sizes currently available are 12', 14', 20', 22' and 24' Racks are also available



3000 Sludge Tank

19' NEW Lumber Body w/Ratchet Tie-Downs w/Dumping Hoist

4 I-Beams 49 Long, 28' High w/12-1/2" Web



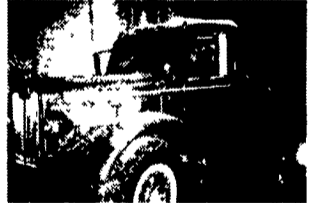
Clark Crane 14 Ton Capacity, 4-53 Detroit, 60' boom, 14 00x24 tires, runs good serial #720



W7 Case Loader, 15 5x25 tires, runs good serial #9900486



1981 Mack R-600 Dump 250 Mack Engine, 6 spd trans, 38,000 lb rears, P/S, 14' alum body, 11x24 5 tires



1947 Autocar C-50 Tractor 42,000 miles, 477 gas eng, 5 spd, air brakes, runs great, kept inside since new

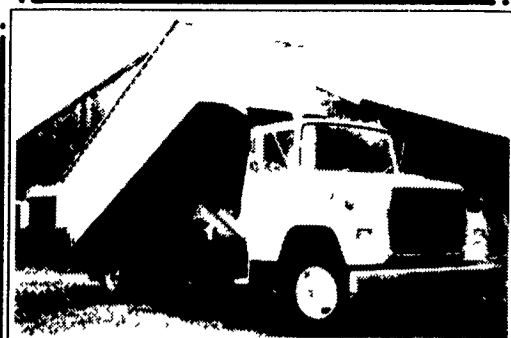


1948 International KB Chassis 50 000 miles, 269 gas engine, 2 spd trans, hydraulic brakes excellent condition, been in storage over 30 years

Expanding Business Looking For Mechanics & Mechanics Helpers CALL FOR DETAILS!! Benefits after 90 Days.

Wm. Cohen & Sons
Thorndale, PA
(610) 269-1298 Call between 7 am - 4:30 pm

Hundreds of Used Truck Tires For Sale Sizes from 16" to 24"
1979 Crane Carrier Cement Mixer, 10 Yd Rex Mixer 230 Cummins 8 Spd, Trans, 44,000 Lb Rears Asking \$8,500
Used Overhead Door For Sale 18 H x 14 W Asking \$550
Aluminum Loading Ramps 9' & 10', also some other sizes available
Used Van Trailer — For Sale or Rent
Yale Electric Hoists 1/2 ton cap, 440 volt, single and three phase Asking \$350/ea.
Pedestal Grinder Baldor 2 Hp, 3 phase, 220 amps
Toledo Scale 1 000 lb Capacity
Oil Heaters 250 000 BTU's

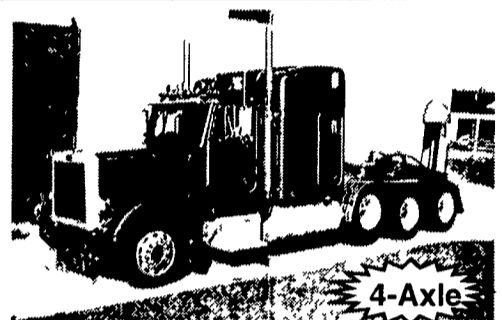


1990 Ford LN8000, 7 8 Ford Diesel, 5 & 2, AB, PS, Air Seat, 207,000 Miles, w/NEW SCOTT 16' Grain Body with 50" Sides, 7 Gauge Steel Floor, 3 Piece Endgate, 15 Ton Hoist Very Good Condition!
\$22,500
SUNNY ACRE SALES
R D #2, Box 266, Tyrone, PA 16686
814/742-8202, 814/742-7303

HUNTER KEYSTONE PETERBILT LP



1467 Manheim Pike • Lancaster, PA 17604
717 299-6630 • 800 243-2458



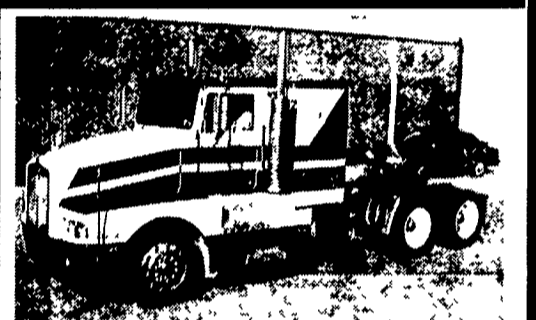
95 Peterbilt 379, 63" Hi Top, Cat 3406E-475 HP, 185 Spd, 4 Axle, Low Miles, Excellent Condition



82 Kenworth W900B, 60" Sleeper, Cummins 400 Eng, Jake Brake, 10 Speed Air Ride Susp, Recent In-Frame Overall



1993 Mack RD690, 216" WB, EM7 300, Mack 7 Spd, D/F, 44K Rears, Less Than 200,000 Miles



87 Kenworth T600, Cumm-400, 9 Spd Trans, 4 44 Ratio, 210" WB, Air Ride

1968 - 1998
KEEN
KATIE COURT HARRISBURG, PA 17109 (717) 564-4511 FAX (717) 564-4519
TRUCK RENTAL & LEASING



1998 International 9100 Caterpillar C10 370hp @ 1800 RPM RT-1470H 9 speed IHC N400 rears ratio 3.06 tires 295/75R 22.5 A/C P/S AM/FM stereo full gauges heated mirrors drivers high back air ride seat w/cloth insert 24" air slide 5th wheel air ride suspension, deck plate block heater dual 100 gal fuel tanks wheelbase 158" CA 92" cab to end of frame 153" (mileages range from 22,500 to 73,560 Trucks are well spec'd and are in excellent condition



1995 Volvo/GMC WCA64T Caterpillar 3176 350hp w/jake brake, RTX 13710C 10 speed w/cooler DS-404 rears, ratio 3.90 tires 275/80R 22.5 A/C P/S, AM/FM stereo full gauges air dryer 24" air slide 5th wheel moto mirrors driver seat high back air slide quarter fenders wheelbase 185" *** Note *** Trucks are red in color Mileages range from 425,000 to 495,000 Great condition



1994 International 9400SBA Detroit diesel 11 1 365 hp RTX-14710C, DS 402 ratio 3.90 tires 295/70R22.5 A/C, P/S full gauges dual 150 gal tanks air ride, air seat air slide 5th wheel 48" sleepers, aero package, premium interior air dryer super clean, low mileages, (great trucks)



1994 International 8200 Detroit diesel 11 1 350 hp Rockwell PS12510S Eaton DS-402 ratio 3.90 tires 275/80R 22.5 WB 172" A/C P/S, AM/FM stereo, moto mirrors air ride suspension, air slide 5th wheel quarter fenders, hi back drivers seat, cloth interior, (Great day cab)



1995 Ford LN8000 Ford FD-1460 ATA 210 hp, Fuller FS6206 6 speed RS 23 160 Rockwell rear, ratio 3.91, A/C P/S, full gauges, AM/FM stereo, air ride driver seat, block heater, air dryer, dual 50 gal fuel tanks, spring suspension Morgan 22" body C/S side door, rear roll up door mileages are 164,000 & 136,000 Trucks are very clean.



1995 Ford F350 Crew Cab Dually 460 elec gas, A/T w/overdrive, ratio 3.90 A/C P/S, P/W, P/L, P/B w/elec brake bench cloth seats, centeran trk pkg, 23 000 miles Lots of chrome goodies, clean, priced to sell.