

## Harrington - Weldon Top National Junior Limousin Show

ENGLEWOOD, Colo — Limousin youth from 25 states came together to make the 1998 National Junior Limousin Heifer Show July 16 in Springfield Ill., one of the largest gatherings of junior Limousin cattle ever held in the United States.

Spectators watched as judges Frank Jackson of Bentonville, Ark and Herman Symens of Sisseton, S.D. made their selections from 296 females presented by 270 exhibitors.

Nikki Harrington of Republic, Mo. topped the competition by exhibiting the grand champion female, MAGS Gretchen 138G, a 1/3/97 daughter of COLE First Down. MAGS Gretchen was also named Division V champion and later selected as the grand champion female of the All American Limousin Furity.

For reserve grand champion female honors, the judges went to division III for EXLR Peg 7715G exhibited by Zach Weldon of Piedmont, Okla. The 4/8/97 female is a daughter of Wulfs Dawson.

In Division I, Amber Lawrence of Anton, Texas exhibited the champion with LFL 741G, a 9/3/97 daughter of TYRE Dean. Zach Weldon of Piedmont, Okla. exhibited the reserve champion in Division I

with EXLR The Duchess 397G, a 10/20/97 daughter of Cane Ridge Maverick

The Division II champion went to Lee Roy Lawrence of Anton, Texas with LFL Meg Ryan 729G, a 7/25/97 daughter of JCL Black Out. STOJ Black Shania 31G was named reserve champion in Division II for exhibitor Amy Brooks of Marietta, Okla. Shania is a 6/11/97 daughter of Wulfs Quarterback.

Division III reserve champion was MAGS Ghostly Spirits 488G, a 4/26/97 daughter of COLE First Down, exhibited by Jeffrey Berry of Port Orchard, Wa.

Division IV was won by Ashley Etherton of Dawson, Ill. with her 3/8/97 female, SLVL DVFC Fancy Cookie 242G, a daughter of SLDJ Polled Equity. Megan Rolf of Leroy, Kan. exhibited the division's reserve champion with TUBB Geri 7721G. The female is a 2/23/97 daughter of Cane Ridge Maverick.

The Division V reserve champion, MAGS Ginger and Spice 264G, was exhibited by Jeffrey Berry. His heifer is a 2/6/97 daughter of TRAK O'Molloy.

In the cow/calf pair competition, KEHG Sweetheart 2F and her bull calf claimed champion honors for Katy Getz of Jay, Okla. Sweetheart is a 2/15/96 daughter of JCL Polled Exacto. Her 3/17/98 bull calf was sired by Cane Ridge Poll Stacker. Reserve champion cow/calf pair went to Erica Vorthman of McClelland, Iowa. VORE Fantasia 617F, a 3/23/96 daughter of YKCC Top Cop, and her 2/26/98 bull calf sired by MINE 008E were selected.

**MILK**  
Where's your mustache?™

BUY SELL TRADE OR RENT THROUGH THE

# CLASSIFIED ADS

PHONE: 717-626-1164 or 717-394-3047  
FAX 717-733-6058  
Mon., Tues., Wed., Fri. 8 AM to 5 PM; Thurs. 7 AM to 5 PM

**1a CONSTRUCTION EQUIPMENT**

1980 Komatsu D75 S-3(Cat 977L Copy) GP bucket, plumbed for ripper, good condition, \$17,500 OBO 610/821-7873.

1984 JD 555A GP bucket w/or w/o grapples, very good condition, \$17,500 OBO. 610/821-7873.

20,000 lb Hyster ForkLift \$9,500. Call After 5:00 PM (717)222-4404.

(2) 1988 IR 185 compressors, JD diesel, VG condition, \$4,000 each. (301)371-5500.

425 NH skid loader, excellent condition, \$5000 OBO. 610-987-6880

6' Highway Broom Attachment, Hyd. Drive/Controls. \$800 (717)386-4309.

8' Deep V SnowPlow Blade \$450 (717)386-4309

**AIR COMPRESSORS**  
Smith 200CFM 4cyl JD diesel in working condition, \$3800, Airman 185CFM 4cyl Isuzu diesel, was working before tornado damage, restorable for stationary, \$450. Weaver's Sales & Rentals 610/682-2215.

**BROUWER** Walk-Behind Roller \$1100; **MICHEGAN** 55A Loader \$6,750.; (717)286-5306.

**CAT** 933G loader, runs good, recent paint, 85% U/C, turbo, electric start, \$6,000. Berks Co., (610)779-3789.

**Case** 1150 crawler loader ripper, runs good Must sell \$7,000. GMC 7000 dump truck, 28,000 GVW, runs good, \$4,000. (610)982-0311.

**Case** 1737 Unloader gas, \$3,595 (3) Hough loaders (1) w/backhoe \$4,195. 530CK D, good shape, \$5,495. 580CK parts machine, extend-ahoe, diesel, whole or parts. Other equipment available. (301)416-2544.

**Clark** TW40-E (electric) forklift, 3750 lb. cap, needs battery, \$2,000 OBO. (717)295-9808.

**Construction Trailers.** 9-ton tri-axle, \$2800 - \$3500. 717-697-7378

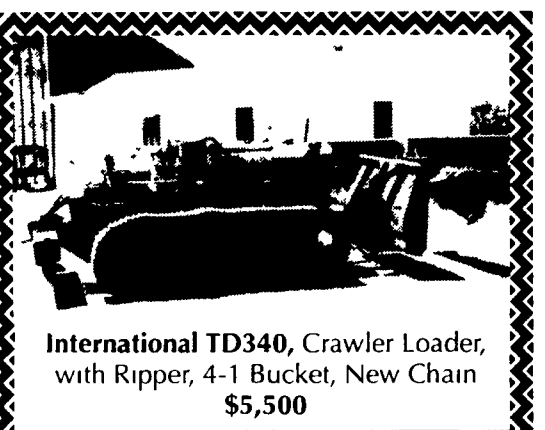
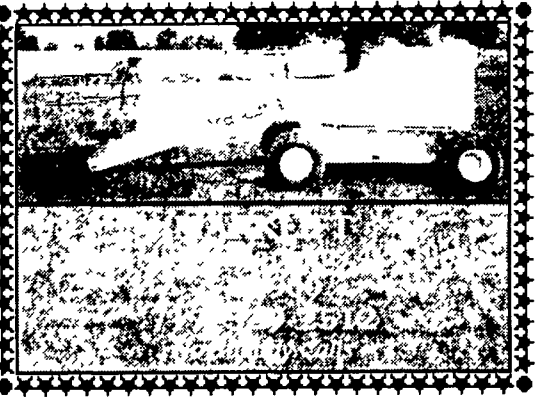
**Dresser** 125E crawler loader, VG condition, VG U/C, \$12,900. (301)371-5500.

**Dynohoe** Backhoe w/Cab, Detroit Motor, Diesel model 1900, Digs 19', 4-in-One Front End Bucket. Runs good! \$10,500/obo Bucks County (215)885-1032.

**Fiat** Allis 545B w/cab, heat, very good condition, \$18,700. 717-534-1253

**Finn** hydro seeder 900G mounted on a '77 GMC truck, very good condition, \$17,000. (610)987-3742.

**Forklift** Wholesalers 2000 to 92000 Lb. Lifts Available. 70 in Stock. Sale-Rental-Finance w/ Warranty. Chalk Equipment. (410)686-6800.



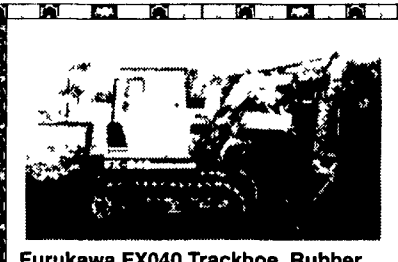
**International TD340, Crawler Loader, with Ripper, 4-1 Bucket, New Chain \$5,500**

**Heavy Equipment Loader Parts, Inc.**  
10070 Allentown Blvd, Grantville, PA 17028  
(717) 469-0039 (800) 446-0505



**1984 Caterpillar D3B, Crawler Dozer, 6-Way Blade.... \$20,000**

**Heavy Equipment Loader Parts, Inc.**  
10070 Allentown Blvd, Grantville, PA 17028  
(717) 469-0039 (800) 446-0505



**Furukawa FX040 Trackhoe, Rubber tracks, blade, side shift boom, cab, 2300 hrs, nice.....\$12,900**



**Condor 48 ft manlift, 4x4, good rubber, new paint, rotating basket..... \$14,500**



**1988 Case 585 forklift, good rubber, new paint.....\$15,900**



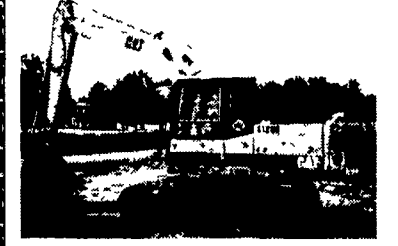
**85 Kawasaki wheel loader, new rubber, new paint.....\$22,500**



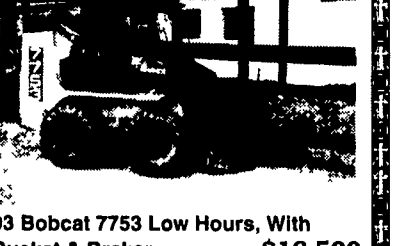
**91 Cat 110B New Pins & Bushings & Sprockets, Long Stck.....\$29,500**



**1993 Cat 312 Trackhoe, AC 3800 Hrs., Nice & Clean..... \$48,500**



**90 Cat 120B, 10' Stck, Clean Machine \$29,900**



**93 Bobcat 7753 Low Hours, With Bucket & Braker.....\$16,500 New Pallet Forks.....\$600**

**JD 450C Crawler Loader, New Paint, Nice Clean Machine..... \$14,500**

**1987 Ford 655A w/Ext. Hoe, Good Rubber.....\$15,500 \$14,500**

**1984 Lull 844 JD diesel, new paint, good rubber, mast stabilizers.....\$28,000**

**1990 Lull 522-4 JD diesel 4x4, 22 ft, new rubber, new paint.....\$24,000**

**1987 Cat 416 TLB, full cab, heat.....\$17,500**

**1995 Gehl 4625 SX Skid Loader, low hours, new rubber.....\$12,900**

**1965 Cat 966B, 23.5x25 Rubber, Good Condition.....\$21,000**

**1993 Bobcat 7753, good rubber, nice.....\$13,200**

**1984 Condor 42, 4x4, manlift, new paint, good rubber.....\$14,900**

**John Deere 400, Wheel Loader Backhoe, \$6,500**

**Heavy Equipment Loader Parts, Inc.**  
10070 Allentown Blvd, Grantville, PA 17028  
(717) 469-0039 (800) 446-0505

**MILK**  
Where's your mustache?™

**AA Equipment**  
717/529-2512  
No Sunday Calls

1797 Robert Fulton Hwy., Quarryville, PA 17566  
• We Buy & Sell  
• Financing Or Lease Purchase Available  
• 90 Down NO Payment For 90 Days