

NH 467 haybine, \$1750;
NH 256 rake w/dolly
wheels, \$1750; Pequea
710 PTO tedder, \$900; NI
323 picker, nice, \$1950.
610/562-4464.

NH 489 haybine, new rolls
in '96, hydraulic swing
hitch, original paint, excel-
lent condition, \$3,500. Un-
ion Co, (717)523-3328.

NH 489 haybine. NH whirl
feed 30 blower, 1000 RPM.
JD 321 elevator, 30'. Ken-
wanee 500 grain elevator,
3hp motor, 42'.
814-443-1233

Vermeer new and used
round balers, rakes, ted-
ders, wrappers and film,
finish cultivators, corn pick-
ers, haybines, and NH 847
baler. C.W. Neiderhiser
Sales, (724)423-4076,
(800)715-5586.

Binkley & Hurst Bros. Offers Quality That Exceeds

SOONER OR LATER . . . YOU'LL CHOOSE A

SUNFLOWER

HUNDREDS OF YOUR NEIGHBORS ALREADY HAVE

CHISEL PLOWS • LAND FINISHERS

COULTER RIPPERS • DISKS • FIELD CULTIVATORS

ASK ABOUT OUR 3 YEAR WARRANTIES



Series 5000 Field Cultivator

- High Residue-flow machine
- Super duty construction
- 18' - 38' working widths
- 190# point pressure
- Unparalleled leveling tool



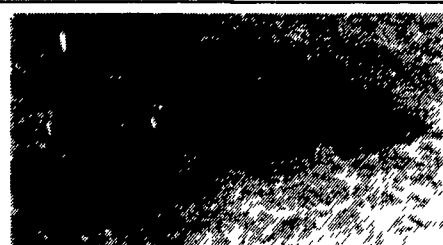
Model 4200 Trash Mulcher

- Working widths 9' - 29'
- Heaviest frames in the industry
- 1,750# point pressure (they go in)
- Subsoil shanks available
- Exceptional residue flow



Series 6000 Land Finisher

- Transport as narrow as 12'4"
- Widths from 15' - 36'
- Precise leveling • Ideal finishing
- Options to meet your residue requirements



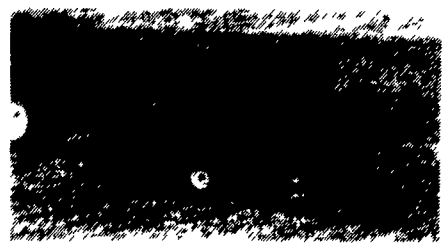
Model 1433 Conservation Disc
Rock Flex Heavy Duty Cut - Plow
Level and Finish

- High speed - Super leveling
- Walking tandem axles
- Ratchet adjust wing gauge wheels
- 19' - 35' working widths



Model 4010/4100 Coulter Ripper

- 4 shank to 9 shank models
- Adjustable 24" to 30" spacing
- Hyd. coulters
- Up to 6,000# point pressure
- 2 pt hitch models available



Series 1200 Disc

- Working width from 10' - 32'
- A proven veteran of millions of acres
- Wing units transport as 12'4"
- Wing gauge wheels standard

Heavy Duty Mounted Ripper Units

FROM HARDPAN
SHATTERING TO
RESIDUE COVERED
FINISHED SEEDBEDS...
SUNFLOWER EXCEEDS
YOUR TILLAGE NEEDS



"Boiling" uplifting action in the soil allows water to enter and be retained in subsoil minimizing runoff. Yield increases up to 10 bu. more corn per acre." Lancaster Co. farmer



Series 9000 Grain Drills

- A quality drill for every application
- Available in 10' - 40' models
- No til or conventional
- 3 pt./caddy mounted/folding units

**BINKLEY & HURST
BROS. INC.**
Fax 717-626-0996

133 Rothsville Station Rd.
P.O. Box 0395
Lititz, PA 17543-0395
(717) 626-4705 1-800-414-4705



NEW EQUIPMENT SPECIALS

- Kuhn 7301 24' Folding Rake
- Kelly B15 8' 3 pt Backhoe
- Hesston 540 Round Baler
- Hesston 3983 12 Wheel Rake
- Hesston 3986 14 Wheel Rake

USED EQUIPMENT

- Field Queen Feed Roll Transmission
- Field Queen Main Gear Box
- Bradco 11MD2 Kubota Frame Mount Hoe
- Bush Hog 3109 9' 3 pt. excellent
- Kuhn FC 300 GDR 10 Disc Conditioner
- Yanmar 226D w/Woods belly mower

LAWN & GARDEN

- MC 72" Flail Mower w/Catcher
- Cub Cadet 2182, 21 hp. Liquid Cooled 60"
- Cub Cadet 1641 48", 200 Hrs
- Grasshopper 721D, 1991, 61", 600 Hrs
- Grasshopper, 725, 1991, 61", 1700 Hrs
- Simplicity Sun Star, 20 HP, 60"
- Steiner Boom Mower
- Kubota FZ 2400 72" 4WD

STOLTZFUS FARM SERVICE

Cochranville, PA 610-593-2407

STOUFFER BROS. INC.

1066 Lincoln Way West, Chambersburg, PA
Phone 717-263-8424

FORAGE

- Gehl 1560 Forage Blower
- NH 716 Forage Box
- 2 - Gehl 940 Forage Box
- JD 3960 Harvester w/Attach
- Gehl 1060 Harvester
- Hesston 7020 Harvester
- 3-Gehl 970 Forage Box

MOWER CONDITIONERS

- Hesston 6200 Self-Propelled 12 FL-V. good cond
- Hesston 1150 Mower Conditioner
- Case IH 8370, 14 ft Hydro. Swing
- Case 955 SP Mower/Conditioner w/Draper Header

SKID LOADERS & UTILITY

- (3) Gehl 4610 Skid Loader
- Case 580SE Loader Backhoe
- JD 125 Skid Loader
- Case 450B Crawler/Loader
- Case 1840 Uni Loader
- (3) NH 455 Skid Loader
- Ford 555B 4WD, Backhoe
- Gehl 3825 Skid Loader
- JD 450 C Dozer
- Case 580E 4WD Ext. Hoe
- Gehl 4625 Skid Loader
- Gehl 6620 Skid Loader
- Case 580 Super K 4WD Ext. Hoe
- JD 310C Backhoe
- Case 580D Backhoe

MISCELLANEOUS

- Gehl 315 Spreader
- Shepherd 9 ft. Roller Packer
- Artsway 800B Mixer Feeder
- NI 382 V Spreader
- JD 45 3 Bottom Plow
- Schuler 175 BF Feeder Wagon
- Top Air Sprayer, 300 Gals., 35' Boom
- Gehl 120 Grinder/Mixer
- JD KBA 8 ft. Disc

TRACTORS

- David Brown 1212
- JD 4010 Tractor
- Case 2094 Tractor
- White 1650 w/Loader & Log Forks, 4WD

LAWN & GARDEN

- Cub Cadet 129 Mower
- Yazoo Red Rider Mower
- Troybilt Walk Behind Mower
- Case 224 Tractor w/Mower
- (3) Case 220 Mower
- Case 444 w/44" Mower
- White Field Boss 16
- Kubota B1700 HSDB Mower w/Loader
- Kubota B7100 HST Mower
- Kubota G5200H Tractor w/Mower
- JD 317 Mower
- JD 912 Front Mower
- (2) Cub Cadet 1863 Tractor w/Mower
- Honda 3011 Rider Mower
- Ingersoll 3016 44" Mower
- Kubota G1900 w/60" Mower & grass catcher
- Cub Cadet 1811 Mower

Sales, Parts & Service For... CASE UTILITY • GEHL

• VICON • KUBOTA • SAME

NH 404 Hay Conditioner,
GOOD CONDITION! \$475
(610)444-9238.

Brillion XL144,
23' X-Fold, Packer,
Scrapers. Good
Condition. \$4,000
(717) 328-2336

NEW EQUIPMENT SUMMER SELL-OUT

**GEHL 180 Bu. Box
Spreader \$4,795**

**CASE IH Disk Harrows,
Cushion Gang 12' or 14'
\$6,900**

**Demonstrator, GEHL
6635 80 HP Skid Steer
Call For \$**

**A. L. HEAR & BRO. PA
Quarryville PA
717-786-3521**

HONDA ENGINES



Keeping it going smoothly and quietly

AUGUST SPECIALS

3 HP GC160 Light Duty, Recoil	\$195
2.5 HP G100 Recoil	\$235
4 HP GX120 Recoil	\$280
5.5 HP GX160 Recoil	\$295
6.5 HP GX200 Recoil	\$345
9 HP GX270 Recoil	\$465
11 HP GX340 Recoil	\$545
13 HP GX390 Recoil	\$565
18 HP GX610 Recoil Tank Muffler	\$1135
20 HP GX620 Elec Start Tank or Fuel Pump	\$1295
5.5 HP GX160 Elec Start	\$416
9 HP GX270 Elec Start	\$605
11 HP GX340 Elec Start	\$660
13 HP GX390 Elec Start	\$680

**6 To 1 Clutch Reduction
540 RPM \$895**
All Units Have Oil Alerts
Except 2.5 & 5.0 HP
FREE UPS Shipping
Pa Residents Add
6% Tax - Send Check
With Order

**Blue Mt. Small
Engine Service**
1490 Three Sq. Hollow Rd
Newburg, PA 17240
717-423-5358

FARM TRACTOR PARTS

USED - RECONDITIONED - NEW
Largest Computerized Inventory In The East

JUST ARRIVED FOR SALVAGE

Farmall M Ford 6610
Ford 800 IH 504

Ask for our 1998 Tractor Parts Catalog



814 SOUTH COLLEGE STREET (ROUTE 501)
MYERSTOWN, PA 17067

800-451-5240 (717-866-2135)

FAX 717-866-7866 www.wengers.com
MON.-FRI. 7:30-5:00 SAT. 7:30-12:00

