

# Competitors To Gather For Horse Show

**QUENTIN (Lebanon Co.)** — Approximately 600 horses and riders and drivers from as far away as Texas will compete at the 64th annual Quentin Fall Horse Show in Quentin.

This year, the event will be held as two separate shows. Hunters and jumpers will compete Thursday through Sunday, August 27-30. Because many of the Saddlebred stables will be attending the World's Championship show at the Kentucky State Fair on those dates, classes for Saddlebreds, Morgans, Roadsters, and Hackney ponies will be held Saturday and Sunday, Sept. 5-6. Divisions for western pleasure horses and light-shod Tennessee Walking Horses have been added to the latter nonrated competition.

The event showcases a number of breeds, disciplines, and styles of riding, and fills two and at times three rings with exciting equestrian competition each day.

Spectators are invited to bring lawn chairs and a picnic to enjoy ringside as the horses, including jumpers, hunters, Saddlebreds, Morgans, roadsters and Hackney ponies, and their riders and drivers compete. The show also offers a playground for children, a food court, and shopping.

Competitors include children and adults, amateurs, and professionals. Classes begin early each morning Aug. 27-30, with an evening session on Aug. 29. Afternoon and evening sessions will be held Sept. 5-6.

The \$7,500 Quentin Mini-Prix,

a timed class over fences, will be held Saturday evening, Aug. 29. On Sunday, Aug. 30, classes for hunters and jumpers ridden by amateurs and children will be held in three rings beginning at 8 a.m. Admission to the grounds is \$3 for evening sessions, Saturday,

Aug. 29 and Saturday and Sunday, Sept. 5-6. Admission for all daytime and afternoon sessions is \$1. Box seats in the covered grandstands are available for \$5 per day on a space-available basis.

The Quentin Riding Club is located at the intersection of Rts.

419 and 72, three miles north of Pennsylvania Turnpike exit 20 and the Lancaster County line in Lebanon County.

For more information, call (717) 867-5643 or phone the horse show office at (717) 273-1276 beginning Tuesday, Aug. 25.

## Pasture Management Meetings Set

**CATASAUQUA (Lehigh Co.)** — Two pasture management meetings to provide information on managing and maintaining productive pastures on your farm are scheduled for Sept. 15-16 at separate locations.

One meeting is scheduled for Bonny Dell Farms, Andover N.J., on Tuesday, Sept. 15. The same topics will be covered at another meeting at Willow Brook Farms in Catasauqua on Wednesday, Sept. 16.

Featured topics and speakers include:

- Maintaining Soil Health For Productive Pastures by Gregory W. Solt, extension agent, Northampton County.

- Weed Control And Fertility As A Component Of Pasture Management by Everett A. Chamberlain, Warren County, New Jersey, ag agent, Rutgers Cooperative Extension.

- Identifying Poisonous Plants by Robert C. Mickel, Sussex County, New Jersey, ag agent, Rutgers Cooperative Extension.

- Evaluating Pasture And Hay Quality by Donna Foulk, Monroe County extension agent.

Bonny Dell Farm is located Rt. 603, Andover, N.J. Willowbrook Farm is located off of Willow Brook Road, Catasauqua.

For more information, contact Greg Solt or Duane Stevenson, Northampton County Extension office, (610) 746-1970 or Bob Mickel, Sussex County N.J., (973) 579-0985.

### Outstanding 2-Day Auction

Sept., 25, 1998 9:30 a.m.

Sept., 26, 1998 9:30 a.m.

**LOCATION:** On premises. #219 Jubilee Rd. (Little Britain/Wakefield Area) Southern Lancaster Co., PA From Wakefield, PA take Rt. 222 S. 3-1/2 mi. Turn left onto Little Britain Rd. Follow 1-1/2 mi. to Wrightsdale Church. Turn right onto Jubilee Rd. From Nottingham, PA. Take Rt. 272 N. 7 mi. through the Village of Little Britain, PA. Turn left at Elementary School onto Little Britain Rd. Follow 2-1/2 mi. to Wrightsdale Church. Turn Left onto Jubilee Rd. From Conowingo, MD take Rt. 222 N 5 mi to Little Britain Rd.

**AUCTIONEERS NOTE:** Auctions are to be held on a beautiful Lancaster Co 125 acre "Gentleman's Estate" w/CA 1830 Brick Home both days are to be held under roof regardless of weather!!! Don't Miss This One!!

**FRIDAY SEPT. 25 9:30 a.m.** - Tractor, Tools, "Hit & Miss" engines, guns, Complete Woodworking Shop w/Access Over 1,000 Items Found on Farm

**SATURDAY SEPT. 26 9:30 a.m.** - Period Antique Furniture & Access. of the finest Quality & Selection. Rare Stoneware, Slipware, Iron, Brass, Woodenware, Artwork, Sterling Silver, Royal Doulton, 1776 German Bath Certif. (Geo Weiss), 1810 Landis Coverlet, Over 500 Lots Not Listed!

**TERMS:** CASH OR CHECK W/ID Food Available

**BY ORDER:** Mr. & Mrs. J.P. Wilkins  
**AUCTIONEER:**

Jeffrey Edgar Whiteside, AU 2368

Antiques & Estate Service (610) 932-2114

Personalized Service Since 1979



**AUGUST 28th thru SEPTEMBER 3rd 1998**  
**Schedule of Events • FREE Grandstand**

**Friday, August 28**  
6:00 and 9:00 p.m. Mila Mason  
7:00 p.m. 4x4 Pick-Up Truck Pulls  
(Exhibit buildings will open at 4:00 p.m.)

**Saturday, August 29**  
8:00 a.m. Keystone Central Horse Show  
10:00 a.m. Farm Tractor Pulls  
6:00 and 9:00 p.m. Mahoney Brothers

**Sunday, August 30**  
10:30 a.m. Draft Horse Show  
2:00 p.m. The Covatts Gospel Music  
7:00 p.m. Worship Services

**Monday, August 31** **KIDDIES' DAY**  
(Children through high school age admitted free and rides at reduced rates until 6:00 p.m.)  
6:00 and 9:00 p.m. The Kinleys

**Tuesday, September 1**  
9:30 a.m. Open Class Dairy Cattle Show  
6:00 and 9:00 p.m. Paul Revere and the Raiders

**Wednesday, September 2**  
4:00 p.m. Junior Livestock Sale  
6:00 and 9:00 p.m. David Kersh

**Thursday, September 3** **SENIOR CITIZENS' DAY**  
(62 and older admitted free)  
1:00 p.m. Parade  
6:00 and 9:00 p.m. Jimmy Sturr  
(Exhibit buildings will close at 9:00 p.m.)

**CENTRE COUNTY GRANGE FAIR**  
**CENTRE HALL, PENNSYLVANIA**

(Visit our website: [www.pafairs.org/centrecountyfairs/](http://www.pafairs.org/centrecountyfairs/))

### Public Auction

RENTZEL'S AUCTION BAR

Thurs., Aug. 27, 1998 10:30 AM

FARM EQUIPMENT

**LOCATED:** 1 1/10 Mile north of Manchester, PA along Rt. 181, turn right at gray rock. Watch for Signs.

Int. #14 Hay Rake, Int. #46 Baler w/Thrower, A.C. 780 Harvester, (2) Bins w/Gears, Dearborn 1 Row Picker, N.I. 251 Pull Sickle - PTO, New Idea #214 PTO Spreader, (2) Forage Wagons w/Gears, Int 8 FC Flail Chopper, Flat Wagon w/Sides, New Holland 460 Haybine, Grain Drill, Forage Body, 32" Bale Elevator, J.D. 445 Tank Spreader, Fertilizer Spreader - 2 Axle No Guts, Century 300 Gal. Sprayer, Henderson PTO Unloading Wagon, One Row Silage Cutter, One Row Dearborn #16-4 Picker, Flat Wagon w/Gear, Truck Body w/Racks, 4 Cy. Wisconsin Bale Engine, Int 3 Bt Trailer Plow on Rubber w/Cyl, Int 20 Blade Drag Dis, 88" Cultipacker, 16A Flail Chopper, 3 Section Spring Tooth Harrow

WRECKED 1968 F-700 FORD W/24' GROVE ROLL BACK BODY.

**NOTE:** MOST OF THIS EQUIPMENT NEEDS SOME TYPE OF REPAIR

**TERMS:** CASH OR GOOD CHECK

RENTZEL'S AUCTION SERVICE

EMIGSVILLE, PA 717-764-6412

PA Lic. #761

### PUBLIC AUCTION

For Clarence And Anna Keener

1852 Junction Rd. - Manheim, PA

Sat., Sept. 5, 1998 At 9:00 A.M.

Insp.: Fri., Sept. 4, 12 Noon - 7:00 P.M. Sale Day from 8:00 A.M.

**Auction Directions:** Rt. 72 - at Manheim Auto Auction turn West on Auction Road - Approx. 1/2 mile turn Left on Junction Road - Keener Farm Approx. 1/2 mile on the Right - Watch for directional signs to auction.

**Special Note:** Furniture to be sold starting at 1:00 P.M. and mixed in through the day.

Over 800 Lots to sell - Mary Gregory Glass - Pigeon Blood Glass - Local Coverlets - Cooper and Brass - Cast Iron - Chocolate Set - Miniature Fluid Lamps - Hooked Rug - Braided Rugs - Lap Robes - Early Crochet Work - Needlework and Cross Stitch - Antique Books - Atlas of Lancaster Co - Currier & Ives -- Gone-with-the-wind Lamp - Art Glass Epergne - Architectural Corner Cupboard - Vict Wardrobe - Two Part Dry Sink - Maxfield Parish - Antique Lighting - Cranberry hanging Light - Slag Table Lamp - Fluid Lamps - Clocks - Brass Adj Piano Lamps - Oak Secretary Desk - Staffordshire - Ironstone - China - Royal Bayreuth - Washbowl & Pitcher Sets - Pattern Glass Water Sets - Sellers Oak Kitchen Cabinet - Carnival Glass - King's Crown/Ruby Thumbprint - Opalcent Epergne - Wavecrest Satin Glass - Good Bowfront China Cabinets - Vict Bureau - Vict Washstand - Cherry Cradle - Shaving Stand - Medallion Back Sofa - D Klein Spinning Wheel - Good Lacquered Child's Sleigh with Brickerville Pa Provenance - Graduated Corner Etegere - Chestnut 3-piece Bedroom Suite - Oak Ice Box - G F Role Plank Scat Splat Paint Decorated Side chairs - Jelly Cupboards - Oak Table - Rope Bed - Breakfast Table - high Chair - Modern Furniture; Pennsylvania House Cherry Period Style Dining Room Suite - Lazyboy Recliners - Maple Dinette Set - Norman Rockwell China Figurines - Bluerina Water Set - Porcelain Chocolate Pots - Over 75 pcs of Ruby Glass - Large Collection of 'Moss Rose' (over 200 pcs total) - Beaded and Mesh Bags - Stoneware Crocks - Numerous Tinwares - Pewter Mounted Coffee Grinder - Redware - Wood Culinary Rack - Brass Sleigh Bells - Agate Kettle - Clay Marbles - Victorian Shoes - Majolica - Tobacco Sizers - Cigar Molds - Cast Iron Pump - Block Planes - Baskets - Wood Golf Clubs - Milanti 120 Base Accordion Bisque Head Doll - Amish Dolls by Ruth Kniss - John Bollinger Conestoga Wagon - Milk Bottles - Pfaltzgraf - Silverplate Flatware Set - Satinwood Inlaid Musical Jewelry Chest - Milk Cans Incl Local Paint Decorated Illustrated Brochure Available.

Partial Listing Of Sale

No Buyer's Premium.

Conestoga Auction Company, Inc.

PO Box 1, Manheim, PA

17545 AH-11-L

Phone 717-898-7284 - Fax 717-898-6628



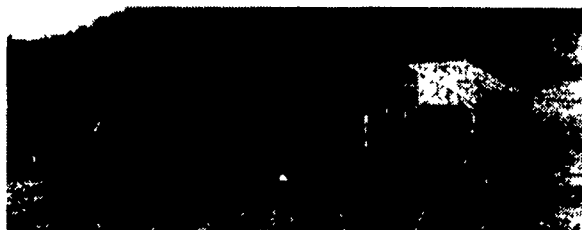
### CLASSIFIED ADS

PHONE 717-626-1184 or 717-394-3047

FAX 717-733-8058

Mon Tues, Wed Fri 8 AM to 5 PM, Thurs 7 AM to 5 PM

### ZV ZIEGLER-VALENTINE ZV COMPLETE AUCTION SERVICE PUBLIC AUCTION



**Saturday, August 29, 1998 9:30 A.M.**

**DIRECTIONS:** From Route 183, 1/2 mile south of Bernville, turn Right on Robesonia-Bernville Road, go 3 miles to Milestone Road, turn Left OR From west end of Robesonia, turn on Bernville Road at video store, go 3 miles to Right on Milestone Road

1970 "1300" International Dump Truck with Myers Snowplow--46,000 original miles 12,000-lb General Trailer w/2 wheels in line H-3 Allis Chalmers Bulldozer 1983 GMC Van w/6 2 Diesel engine--needs a transmission torque converter

IMC Portable Air Compressor, Delta Saw Buck, Porter Cable Laser Chop Saw with Stand, Craftsman 6" jointer, Craftsman Bench Top Table Saw, Delta Table Saw and Jointer Combination, Portable Generator, Craftsman Jig Saw, Belt and Disc Sander, Torpedo Heater, Bosch 4" x 24" Sander, Bosch 3 HP Router, Bosch Laminate Trimmer, Bosch Cordless Drill, Ryobi Cordless Drill

Stanley Router, Milwaukee Sawsall, Milwaukee Hammer Drill, Portable Bandsaw, Master Power Blow Hammer, Floor Edge Sander, 8" Worm Drive Malt Saw, Wet Stone, Trend Dado Set, Craftsman Dovetail Jig, Panel Saw Platform

**PRO 2 TAPCO 10' 6" ALUMINUM BRAKE.**

3'x4' Drafting Table w/Vemco Drafting Machine, David White Transit, Bostitch Brad Nailers, Ryobi Pad Sander, DeWalt Random Orbit Sander, 3/8" Electric Drill, Air Hoses, 2 Shop Vac's, 1-28" Wooden Ext Ladder, 1-32" Wooden Ext Ladder, 1-8" Fiberglass Step Ladder, 2 Ladder Jacks, 4 Pump Jacks with various length poles, 12 Roof Jacks, 4 Scaffold Bucks

4 Boxes of Hardened Finish Nails, 1 Keg of Finished Nails, Used Lumber of various sizes, Misc Cherry and Oak Boards, Old Barn Logs, Used Windows and Doors, Used Vinyl Replacement Windows, Used Electrical and Plumbing Parts Lots of Misc Tools and Hardware

**HOUSEHOLD ITEMS**

Bumper Pool Table/Poker Table 2 Desks, Garden Hose and Sprinklers, Children's Records, At Home with Ernie and Bert Ernie's Hits Bert's Block Busters and more, Children's Videos, Adult Videos--Rain Man and others Small Wooden Child's Desk, 2'x3' Blackboard Bulletin Board 14"x30" Mirror Food Processor Curtains, Plastic Flute, Brown Leather Coat--size 42-Tall White Sweatshirt Size X-Large (new), Frames--various sizes

Electric Engraver Pewter Salt-and Peppers, Grapefruit Spoons, Misc Juice and Wine Glasses, Glass Christmas Platter, Double Floral Comforter Small Train Platform and Train Set for Platform, Mega Blocks, Lego Sets, Plastic Road Set for Matchbox Cars, Puzzles, Games, White and Blue Double-tiered Cheese and Cracker Set Black Serving Tray with inlaid tree picture, Tins, Cookie Cutters Cookbook Wood Indoor Weather Station

Oriental Rugs (2 small, 1 medium--matching set in good condition, also 1 large w/matching runner), Glass Oil Lamp, Brass Candle Snuffer, Sewing Items, Standing Quilt Frame, Quilting Hoop, Cross-Stitch Pattern Books and Fabric, Mat Cutting Board, Mat Cutter and Mat Board, Wood Carving Knife, Line Painting Tool, Metal 24" T-Square, Desk Lamp, 2 Metal Folding Chairs, 4 Snack Trays, 20' Roll Lawn Edging, Fat Bat Very Old Metal Dump Truck (toy)

**This is a liquidation auction of surplus equipment and inventory--a good selection of many useful items.**

**Terms by Russell and Mary Getz**

Cash or Pennsylvania Check

Food Stand

Auctioneers: Ziegler - Valentine Complete Auction Service

Jesse D. Ziegler  
Lic. #AU-002771-L  
610-488-7372

Christine Valentine-Savage  
Lic. #AA-02561-L  
717-534-2484