

WEEKLY LIVESTOCK SUMMARY

AUGUST 14, 1998

14 LIVESTOCK AUCTIONS

CATTLE 4621 Compared with 4756 head last week and 6454 head a year ago. Compared with last Friday's summary slaughter steers 50 to 2 00 higher. Holsteins steady to 1 00 higher. Heifers 50 to 1 50 higher. Slaughter steers steady to 1 00 lower instances 2-0 lower, bulls steady to weak.

SLAUGHTER STEERS High Choice & Prime 2-4 61 75-65 00 few to 65 00 Choice 1-3 59 50-63 35, few to 57 00 Select and Low Choice 2-3 55 00 61 50, Select 1-3 53 00-50 00 Standard 1-2 46 00-55 00 few to 41 00

HOLSTEINS High Choice and Prime 2-3 55 00-58 50, Choice 2-3 50 00-55 50 Select 1-2 46 00-51 00, few Standard 1-2 40 00-48 00

HEIFERS Choice 2-4 58 00 62 50, Select 1-3 54 00-59 00, Standard 1-2 39 00 52 00, few to 35 00

COWS Breaking Utility & Commercial 2-4 36 00-42 50, Cutter & Boning Utility 1-3 30 00-40 75 mostly 32 00 39 00, Canner and Low Cutter 1-2 28 00 37 00, few to 25 50 Shells down to 18 00

BULLOCKS Select 1-3 48 00-54 75

BULLS Yield Grade 1 1000-2400 lbs 45 00 54 00 few to 56 25, Yield Grade 2 980 2000 lbs 40 75-45 50

FEEDER CATTLE STEERS Medium and Large 1 275-650 lbs 60 00-70 00 few to 75 00 few Medium and Large 2 50 700 lbs 45 00-60 00, HEIFERS Medium and Large 1 275-600 lbs 60 00 63 00 few to 74 00, Medium and Large 2 300-750 lbs 40 00 56 00

BULLS Medium and Large 1 275-600 lbs 60 00-75 00, few to 84 00 Medium and Large 2 300-700 lbs 44 00-62 50

CALVES 3482 Compared with 3448 head last week and 3535 head a year ago. VEALERS mostly steady Good 130-300 lbs 50 00 70 00 Standard and Low Good 70-115 lbs 22 00 35 00, few to 40 00 Utility 60-100 lbs 10 00-27 00

FARM CALVES Holstein bull calves very uneven, 20 00 lower to 15 00 higher. Holstein heifer calves strong to 20 00 higher. No 1 Holstein bulls 90 125 lbs 65 00-115 00, No 2 85-125 lbs 40 00-80 00, few to 34 00, No 1 Holstein heifers 80-125 lbs 120 00 221 00, No 2 75-120 lbs 60 00-120 00, few to 35 00 Beef type bulls

and heifers 70-120 lbs 50 00-95 00, few to 35 00

HOGS 2422 Compared with 1786 head last week and 2769 head a year ago. Barrows and gilts 25 to 50 higher, sows 1 00 to 2 00 lower

BARROWS AND GILTS US 1-2 220-265 lbs 35 75-37 00, US 1-3 210-280 lbs 33 50-36 10

SOWS US 1-3 300-500 lbs 16 00-25 50 mostly 18 00-22 00, 500-700 lbs 19 00-24 50, few Medium 250-450 lbs 10 00-16 50

BOARS 9 00-15 00

FEEDER PIGS 398 Compared with 348 head last week and 321 head a year ago. Feeder pigs US 1-3 20-35 lbs 11 00 22 00 35-60 lbs 17 00-36 00 - per head

SHEEP 1972 Compared with 1806 head last week and 2212 head a year ago. Slaughter lambs under 60 lbs 15 00 to 20 00 higher, over 60 lbs mostly steady

SLAUGHTER LAMBS Choice 35-60 lbs 85 00-125 00, 55-85 lbs 74 00-90 00, 80-110 lbs 71 00-87 50, Good and Choice 70-90 lbs 54 00-80 00

SLAUGHTER SHEEP 19 00 45 00

TWO GRADED FEEDER PIG SALES 996 Compared 944 last week and 821 head a year ago. Feeder pigs mostly steady US 1-2 25-40 lbs 37 00-57 50, 40-50 lbs 33 00-55 00, few to 65 00, 50 60 lbs 33 00-47 50, Slaughter 25-40 lbs 42 00-55 00 -- per hundred weight

MIDDLEBURG LIVESTOCK AUCTION MIDDLEBURG, PA AUGUST 18, 1998

CATTLE 343 [PDA] Compared to last week's sale sl steers 1 00 to 1 50 lower, sl cows 2 00 lower, bulls steady to 1 00 lower

SLAUGHTER STEERS High Choice and Prime 2-4 1175-1470 lbs 61 75 64 00, Choice 2-3 1100 1440 lbs 58 00-62 00, Select 1-3 59 25-61 75, Standard 1-2 44 75-53 25

HOLSTEINS STEERS few High Choice and Prime 2-3 1350-1390 lbs 55 00-55 50, Choice 2-3 1150-1600 lbs 51 00-54 75, Select 1-2 46 50-50 00, Standard 1-2 41 50-46 00

HEIFERS few Choice 2-4 1050-1125 lbs 58 00-61 25, few Select 1-3 54 25-55 75, Standard 1-2 46 00-52 00

COWS Breaking Utility and Commer-

cial 2-3 37 50 41 50, low dressing down to 35 50, Cutter and Boning Utility 1-3 34 00-38 00, Canner and Low Cutter 1-2 30 00-36 25 Shells down to 24 00

BULLS few Yield Grade 1 1220-1595 lbs 44 50-44 75, Yield Grade 2 1080-1835 lbs 40 00-43 25

FEEDER CATTLE STEERS Medium 1 350-760 lbs 60 00-63 00, Large 2 380-525 lbs 38 00 42 00 HEIFERS Medium and Large 1 250-420 lbs 48 50-55 00 650 740 lbs 44 50-55 00 Medium and Large 2 420-765 lbs 37 00-41 50 BULLS Medium and Large 1 385 600 lbs 51 50-57 00 few Large 2 300-750 lbs 33 00-40 50

CALVES 233 VEALERS Standard and Good 80-110 lbs 25 00-30 00, Utility 65-105 lbs 10 00 25 00

FARM CALVES Holstein bulls uneven 5 00 lower to 5 00 higher. No 1 Holstein bulls 95-125 lbs 72 50-110 00 mostly 82 50-100 00 90-95 lbs 60 00-75 00, No 2 90 110 lbs 30 00 70 00, 80-90 lbs 27 00 40 00, No 1 Holstein heifers 80-115 lbs 105 00-197 00, few No 2 75-110 lbs 50 00-97 50

Few beef type bulls and heifers 80-85 lbs 30 00-77 50

HOGS 241 (8/17 & 18/98) Bulk of supply sold on Monday and supplied by the auction

BARROWS AND GILTS US 1-2 230-265 lbs 34 50-35 25 US 1-3 225-270 lbs 32 50-34 35, lightweight 1-3 180-200 lbs 27 00 29 50

SOWS US 1-3 300-485 lbs 16 00 19 50, 515-575 lbs 21 00-23 25, Medium 275 400 lbs 13 00 14 50

BOARS 220-325 lbs 8 00 14 00 one 20 50

FEEDER PIGS 50 US 1-3 40-50 lbs 12 00-21 00 --- per head

SHEEP 14 SLAUGHTER LAMBS few Choice 55-75 lbs 82 00-91 00, one 39 00, 80-105 lbs 71 00-78 00

SLAUGHTER SHEEP few 27 00-34 00

GOATS 6 Few Medium Billies and Wethers 36 00-52 00, couple Large Kids 30 00 & 34 00 --- per head

LEESPORT LIVESTOCK AUCTION LEESPORT, PA AUGUST 19, 1998

CATTLE 282 [PDA] [Supply included 114 slaughter steers and heifers, 126 slaughter cows, 26 feeder cattle and 16 bulls] slaughter steers 1 00 to 2 00 lower, sl cows steady to weak, sl bulls

mostly steady

SLAUGHTER STEERS Choice 2-3 1035-1375 lbs 58 00-61 50, Select 1-3 54 25-59 00, Standard 1-2 48 00-53 75

HOLSTEINS STEERS High Choice and Prime 2-3 1450 1545 lbs 55 25-57 25 Choice 2-3 1260-1600 lbs 51 00 54 50 Select 1-2 46 75 51 50 Standard 1 2 41 50-46 00

HEIFERS few Choice 1050-1185 lbs 57 25-61 25, Select 1-3 53 50-57 50 Standard 1-2 46 00 52 75

COWS Breaking Utility and Commercial 2 4 37 50-42 00, low dressing 36 00 Cutter and Boning Utility 1 3 35 25-38 75 low dressing 33 00, Canner and Low Cutter 1-2 30 00-36 50 Shells down to 24 50

BULLOCKS one Select 1-3 49 50

BULLS Yield Grade 1 1130-1840 lbs 44 50-49 25, few Yield Grade 2 1040-1525 lbs 43 50

FEEDER CATTLE STEERS few Medium 1 and 2 850-890 lbs 49 00-54 50, few Large 2 630 1045 lbs 40 00 41 00

HEIFERS few Medium 1 450-525 lbs 56 50-57 50, Medium and Large 2 250-700 lbs 35 00 46 00, BULLS few Medium 1 230-530 lbs 50 00 57 00 Medium and Large 2 570-890 lbs 38 50-45 00

CALVES 176 VEALERS Good 120 160 lbs 40 00-62 50, Standard and Good 75-105 lbs 25 00 34 00, Utility 65-90 lbs 10 00-25 00

FARM CALVES Holstein bulls 20 00 lower No 1 Holstein bulls 95-125 lbs 60 00 77 50 85 95 lbs 42 50-50 00 No 2 85-110 lbs 27 50 57 50, No 1 Holstein heifers 80-110 lbs 95 00-212 50, No 2 65-80 lbs 40 00-65 00

Few beef type bulls and heifers 80-100 lbs 55 00-90 00

HOGS 65 Barrows and gilts uneven 50 lower to 75 higher, sows 2 00 to 3 00 higher

BARROWS AND GILTS US 1-3 230 275 lbs 32 50 34 75

SOWS US 1-3 405-495 lbs 20 00 22 00 505-600 lbs 22 00-23 00

BOARS one 690 lbs 13 00, few 230 350 lbs 11 00-17 00

FEEDER PIGS 179 US 1-3 20-35 lbs 85 00-90 00, one lot 120 00, 55 85 lbs 38 00-48 00 -- per cwt

SHEEP 179 SLAUGHTER LAMBS Choice 40-60 lbs 80 00-85 00, 65-85 lbs 75 00-87 50, 90-120 lbs 70 00-77 50, Good and Choice 55-65 lbs 60 00-70 00

SLAUGHTER SHEEP 21 00-39 00, couple Yearlings 48 00 & 49 00

GOATS 17 Couple Large Billies 32 50 & 85 00, few Large Nannies 37 50-45 00, few Medium 27 50 32 50, Small 15 00-32 50 -- per head

EIGHTY-FOUR LIVESTOCK SALES, INC EIGHTY-FOUR, PA AUGUST 17, 1998

CATTLE 195 [PDA] Compared to last Monday's sale sl cows steady to 2 00 lower, bulls steady

SLAUGHTER STEERS one Select 1 3 53 00 few Standard 1-2 45 00 49 35

HOLSTEINS few Standard 1 2 40 75 42 00

HEIFERS Standard 1 2 40 00 49 00 few to 34 00

COWS Breaking Utility and Commercial 2 4 35 50 37 75 Yield Grade 4 & 5 9 50 34 50 Cutter and Boning Utility 1-3 32 00 35 75 Canner and Low Cutter 1 2 24 50-31 50 Shells 16 00 23 00

BULLS Yield Grade 1 965 1955 lbs 47 50-53 00 Yield Grade 2 1100 2205 lbs 37 00-45 25

FEEDER CATTLE STEERS couple Medium and Large 1 480-675 lbs 60 50 64 00, few Medium and Large 2 365-970 lbs 40 00 57 50, HEIFERS few Medium and Large 1 490-735 lbs 57 50-59 00 few Medium and Large 2 305-900 lbs 45 00 56 00, BULLS couple Medium and Large 1 360-750 lbs 54 00 65 00 few Medium and Large 2 400-965 lbs 42 00-55 00

CALVES 204 [All calves sold per cwt] VEALERS Standard and Good 90 120 lbs 23 00 35 00 70-85 lbs 22 50-34 00, Utility 50-65 lbs 7 00-20 00

FARM CALVES Holstein bulls steady to 10 00 lower. No 1 Holstein bulls 90 125 lbs 65 00 87 50 No 2 85 125 lbs 35 00-65 00 No 1 Holstein heifers 85-125 lbs 115 00-165 00 No 2 90-100 lbs 80 00-100 00

Beef type bulls and heifers 75-125 lbs 45 00-77 50 160-280 lbs 52 00-76 00

HOGS 24 BARROWS AND GILTS couple US 1 2 235-265 lbs 36 50 38 50 US 2 3 230-245 lbs 33 50 35 25 US 1 3 135-185 lbs 25 00-35 00

SOWS one US 1-3 490 lbs 29 50

BOARS couple 525 & 635 lbs 15 00 & 15 50

FEEDER PIGS 17 Seven US 1-3 15-20 lbs 15 00 40-55 lbs 15 00-23 00 --- per head

SHEEP 204 Slaughter lambs steady

SLAUGHTER LAMBS 4-H High Choice and Prime 85-120 lbs 70 00-80 00, Choice 50-75 lbs 80 00-93 00, 80-100 lbs 73 00 80 00, Good and Choice 80 100 lbs 50 00-70 00

FEEDER LAMBS Good and Choice 30-75 lbs 40 00-76 00

SLAUGHTER SHEEP 21 50-40 00

GOATS 72 Medium Billies 30 00-44 00 Large Kids 29 00-34 00 Small 10 00 21 00 - per head

DIETRICH'S MILK PRODUCTS INC.

A LEGACY OF PRIDE

From a proud neighborhood dairy in the 1910's to a modern manufacturing company of the 1990's, the Dietrich family-owned business continues to move forward. With the dedication of three generations and a heritage rich in experience and innovation, Dietrich's Milk Products faces the future with confidence.

As in the past, our future success depends upon fine quality products made from quality milk.

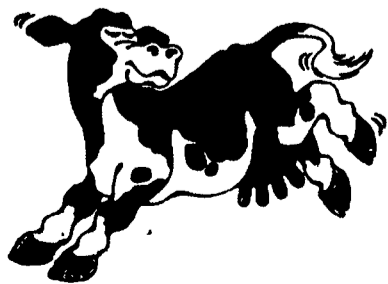
We need more good dairy farm families from your area to assure a continued bright future together.

OUR BENEFITS

- Strong Market Premiums
- Extra Pay For High Solids Milk
- A Field Staff That Knows The "Cow Business" And Is Here To Help You!
- High Quality Milk Premiums
- Sensible Hauling Rates
- A Local, Family-owned Dairy - Large enough to Serve your Milk Marketing Needs - Small enough to Know You!

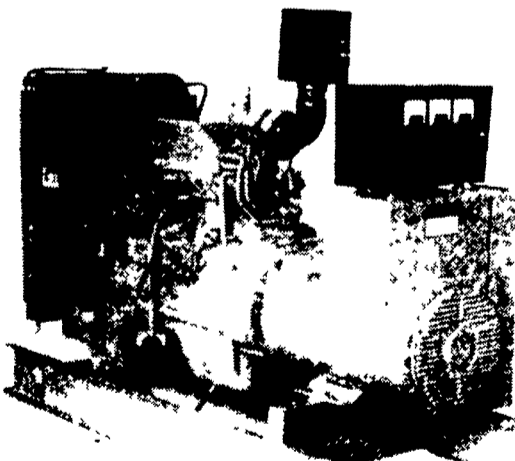
SERVING LANCASTER, CHESTER, BERKS COUNTIES AND THE SURROUNDING AREA

dmp DIETRICH'S MILK PRODUCTS, INC.
100 McKinley Avenue
Reading, PA 19605-2117
READING OFFICE:
800-526-6455
DANIEL VOSBURG:
717-354-5562
JEFF JOHNS:
610-323-4630

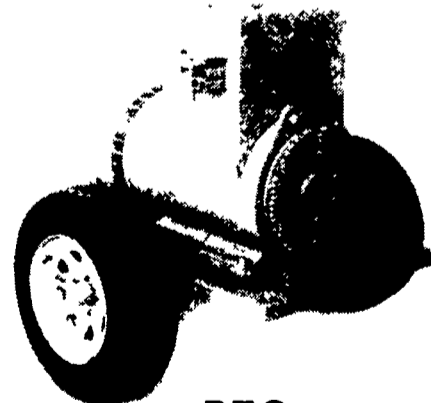


MILK
Where's your mustache?™

Agricultural Generators



Automatic L.P. Gas, Diesel, Natural Gas Generators 5 to 2,000 KW



P.T.O. Generators 25 to 100 KW

Service - Rental - New - Used

PENN POWER SYSTEMS
Power Generation Systems Specialists

Call Leonard Martin **717-273-4544**
Fax 717-273-5186