



'90 International 8300, 350 Cummins, 9-spd., Wet line, 40" sleeper, air ride, A/C, virgin rubber, 11R24.5 Budds, 485,000 original miles. \$18,000.  
**(717) 436-5800**



'75 Ford F900, 477 gas, 5-spd. w/2 spd. rear. 2,600 gal. tank. 4 compt. steel tank, dual pumps, dual meters, very good shape. \$7,500  
**(717) 436-5800**



**1990 Ford Ranger XLT**  
2.3 EFI, 5 sp., PS, PB, 32,000 mi., Damage here & there, easy fix \$2200  
**717-355-0644**

**KEIM**  
YOUR CHEVY  GEO FAMILY

(717) 768-8225  
(800) 223-KEIM

RT. 30 Lincoln Highway East  
Paradise, PA 17562

**YOUR TRUCK, VAN & 4x4  
HEADQUARTERS**  
**1-800-223-KEIM**



**96 CHEVY K3500**  
Extended Cab, Dually, 4x4, Silverado, 6.5 Diesel, Auto, A/C, PW, PL, 38,000 Mi



**85 CHEVY K BLAZER 4x4**  
Silverado, Black with Burg Cloth, 350 V8, Auto, A/C, Must See!



**96 CHEVY K3500**  
Stake Body w/Power Dump, Diesel, 5 dp, A/C, PW, PL, Posi-rear, Only 26,000 Mi



**95 Chevy Suburban**  
LT K1500 4x4, V8 Auto, A/C, PW, PL Only 36,000 Miles



**98 CHEVY CREW CAB**  
C3500 4 10 rear and locking, AT, A/C, Cheyenne Pkg., Stahl Body Utility w/Ladder Rack



**97 CHEVY K2500**  
Extended Cab 4x4, Silverado, 350 V8, Auto, A/C, PW, PL, Only 18,000 Mi



**97 GMC YUKON**  
SLT 4x4, Medium Carmel Tan Leather Interior, Auto, AC, PW, PL, P Seat, CD, Only 12,000 Miles

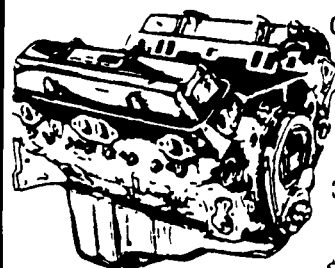


**89 CHEVY EXTENDED CAB**  
C1500 Silverado, V8 Auto, A/C, 70,000 Miles

**JONES**



**We want your business.**



**GM GOODWRENCH**  
350 V8 1973-85  
Part Number 10067353  
New Engine - Not Rebuilt  
36 Month or 50,000 Mile Warranty

New Engine - No Core Fee **\$1199<sup>00</sup>**

**WE'LL MATCH ANY COMPETITOR'S PRICE!**

**6.5L GOODWRENCH DIESELS**  
From **\$3,175**

Call 394-0711 for prices on other New or Remanufactured Goodwrench Engines. 2.5 Liter thru 454 cid. Gas and Diesel

Chevrolet - Pontiac - Olds - Buick - Cadillac - GMC

**JONES GM PARTS CENTER**

1335 Manheim Pike, Lancaster, PA 17604  
Easily Located on Rt. 72 Just off of Rts. 283 & 30  
Hours: Mon-Fri 7:30 a.m. - 9 p.m. Sat 7:30-3  
**(717) 394-0711**



**JONES BEST BUY 4X4'S TRUCKS**

**Largest Stocking & Selling Extended Cab GMC Dealer in 7 States**

**PONTIAC • HONDA  
GMC TRUCK**

1335 Manheim Pike, Lancaster

Prices based on straight sale, Tax & Tags extra. Trades accepted at actual cash value. Must present this ad at time of purchase for sale price.



**'97 CHEV 14' CUBE VAN**  
AT, AC, V8, w/Ramp  
#8011 Was \$23,900  
**SALE \$20,550**



**'97 GMC 14' CUBE VAN**  
AT, 350 Supreme Body, 12,000 Miles  
#8057 Was \$21,000  
**SALE \$19,888**



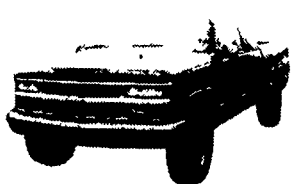
**'93 CHEV K15 4x4**  
AT, AC, 350, Silverado, 44K Miles, Clean, #8071  
Was \$16,800  
**SALE \$14,880**



**'95 CHEV S10 BLAZER 4x4**  
2 Dr, AT, AC, V6 #8067  
Was \$17,900  
**\$16,400**



**'97 CHEV 3/4 EXT. CARGO VAN**  
AT, AC, V8, 18,000 Miles  
#8046 Was \$19,200  
**SALE \$17,850**



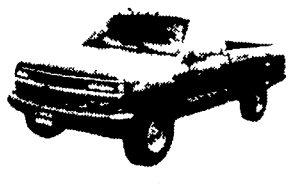
**'95 CHEV K15 XCAB 4x4**  
AT, AC, V8, Silverado  
#8029 Was \$20,800  
**SALE \$18,975**



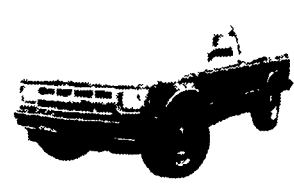
**'90 PLYMOUTH VOYAGER**  
AT, AC, 7 Pass, 75,000 Miles  
#8058 Was \$6,900  
**SALE \$4,750**



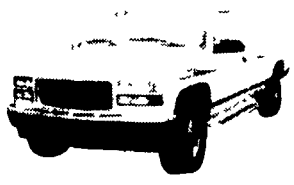
**'89 CHEV SUBURBAN 4x4**  
AT, AC, 350, Silverado  
#8050, Was \$10,900  
**SALE \$8,900**



**'97 CHEV K25 4x4** 8600 GVW, AT, AC, 350, 17,000 Miles  
#8028 Was \$22,700  
**SALE \$19,900**



**'94 CHEV S10 BLAZER 4x4**  
AT, AC, V6, Tahoe, Very Clean!  
#8061 Was \$15,900  
**SALE \$13,800**



**'97 GMC K15 4x4**  
3rd Door, AT, 350, SLE, AC  
#7990 Was \$26,500  
**SALE \$23,550**



**'95 DODGE CARAVAN**  
AT, AC, 7 Pass,  
#8042, Was \$11,400  
**SALE \$9,900**



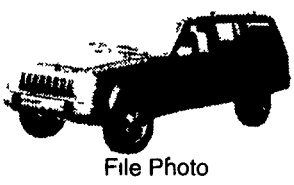
**97 NISSAN X CAB 4x4**  
5 Spd, AC, 12,000 Miles,  
#8032, Was \$18,250  
**SALE \$15,885**



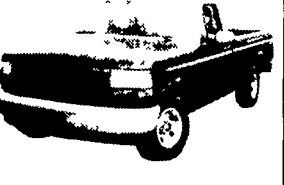
**'95 GMC SUBURBAN**  
Conversion 4x4, AT, AC, Silverado, V8, TV, VCR  
#8038 Was \$28,700  
**SALE \$26,350**



**95 CHEV K25 XCAB 4x4**  
8600 GVW, AT, AC, Silverado  
#8052, Was \$21,742  
**SALE \$19,850**



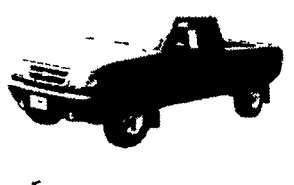
File Photo  
**'96 JEEP CHEROKEE 4x4**  
V6, AC, 5-Spd., 2 Door  
#7978, Was \$15,900  
**SALE \$13,775**



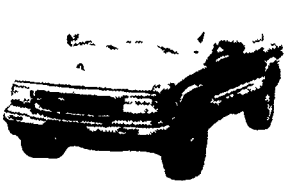
**'93 FORD F150**  
AT, 6 Cyl, Great Work Truck  
#7972 Was \$10,400  
**SALE \$7,275**



**'88 CHEV. SUBURBAN**  
AT, AC, 350, Silverado, Dk Blue  
#8001 Was \$8,900  
**SALE \$5,975**



**'95 FORD RANGER XCAB 4x4**  
AT, AC, V6, XLT  
#8004 Was \$17,145  
**SALE \$14,700**



**'95 GMC JIMMY 4x4**  
AT, AC, V6, SLE  
WAS \$14,900  
**SALE \$12,500**

**JONES**  
**717-394-0711**