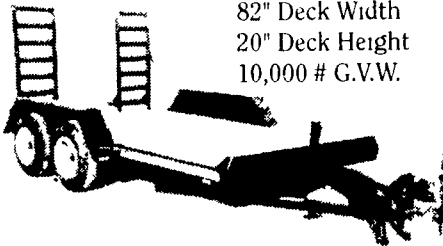


BEST BUY ON THE MARKET

16 ft. **\$2,595**



82" Deck Width
20" Deck Height
10,000 # G.V.W.

6" Channel Tongue and Main Frame Choice of 2 5/16" Coupler or Pintle Ring 7000# Drop Leg Jack Treated Yellow Pine Floor Stake Pockets fits standard 2x4's heavy Tie Rail with Reflective Tape

(14" - \$2,495) (18" - \$2,760) (20" - \$2,960)
Gooseneck - Add \$300

Hostetler Truck Bodies & Trailers
Phone: 717-667-3921

16' Steel Trailer
Tandem Axle,
Hydraulic
Brakes,
New Tires,
Wooden Racks
(717) 529-2330

1970 DIAMOND REO

S/A Truck Tractor
250 Cumins, 10
Spd., Wet Lines,
Real Good Mech.
Cond.

\$2,900
A.L. Herr Bros.
Quarryville, PA.
717-786-3521
Ask For Ken

Quic 'n Easy
RECEIVER HITCH BY DMI

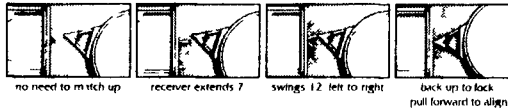
The Latest In-Tow-Vation!



Cushioned
2" Receiver
Hitch

- Fits under your truck bumper mounting directly to your truck frame
- Spring Cush n takes the push/pull out of towing lowering stress on the driver and truck drive train
- Brings the receiver to your load - extends 7 and swings 12
- Tows whatever your truck is rated to tow - exceeds Class IV certification
- Exclusive Proximity Hook up - one person gets it right the first time
- Accepts a variety of adapters drawbar ball step up or step down pintle hook and weight distribution system

Never Miss a Hitch Again. **DMI**

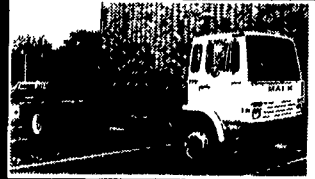


Weaver Distributing
1-800-Weaver-D
RR2, Box 470, Fredericksburg, PA 17026

LESHER Mack
SALES & SERVICE

2700 Cumberland Sts.
(Route 422 West)

Lebanon, Pa.
17042



1993 Mack MS250
190 HP, 6 Spd.,
228" WB, A/C, PS,
Cab & Chassis,
Rebuilt Trans with
New Clutch

LEASE IT!

1999 Isuzu NPR 14 Ft.
Supreme Van Body,
Call For Details
Ask For Leasing Dept.



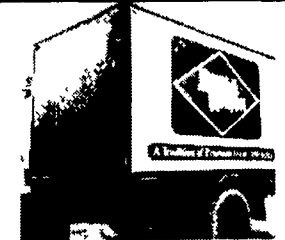
NEED A SLEEPER OR DAYCAB?

Sleeper boxes can be removed - plenty to choose from 1994's - 1995's

E7-350 RTLO14610B
10 Spds, DS404 - 3 9OR on
Air, Steel Disc Hub Pilot,
295/75R 22.5 192 WB,
42" Highrise, 400,000 Miles



717-273-4535



12' Reefer Body,
under body refrigeration unit.
Uses 220 electric Has damage



3- 40' Steel Flatbed Trailers
with sliding tandems, all in good condition



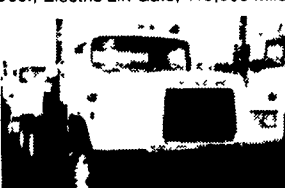
1981 Volkswagon Rabbit
Diesel 4 Spd 177 354 Mi,
2 Door Needs Driver-Side Fender



1989 Isuzu NPR
4 Cyl Diesel, 5 Spd., 14' Van Body w/Rollup
Door, Electric Lift Gate, 115,000 Miles



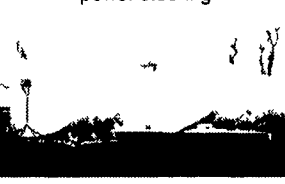
1993 Toyota Pickup
4 Cyl, 5 Spd Trans, AM-FM Radio,
A/C, Excellent Condition, High Mileage



1977 Mack R Model tractors,
300 engine, 5 spd., 38,000 lb rears,
power steering



1500 gallon Sludge Tank
w/2cyl Deutz Diesel



Aluminum Tanker/Trailers
7500 gal and up



New flatbeds available
Sizes currently available are 12', 14', 20',
22' and 24' Racks are also available



3000 Sludge Tank

19' NEW Lumber Body
w/Ratchet Tie-Downs w/Dumping Hoist

4 I-Beams
49' Long, 28" High w/12-1/2" Web

Expanding Business Looking For
Mechanics & Mechanics Helpers CALL FOR
DETAILS!!
Benefits after 90 Days.



Clark Crane 14 Ton Capacity,
4-53 Detroit 60 boom 14 00x24 tires,
runs good serial #720



W7 Case Loader,
15 5x25 tires, runs good serial #9900486

Wm. Cohen & Sons
Thorndale, PA

(610) 269-1298 Call between 7 am - 4:30 pm

Hundreds of Used Truck Tires For Sale
Sizes from 16" to 24"
1979 Crane Carrier Cement Mixer,
10 Yd Rex Mixer 230 Cummins,
8 Spd Trans, 44,000 Lb Rears
Asking \$8,500
Used Overhead Door For Sale
16'H x 14'W
Asking \$550
Aluminum Loading Ramps
9 & 10', also some other sizes available

Yale Electric Hoists
1/2 ton cap, 440 volt
single and three phase
Asking \$350/ea.
Pedestal Grinder
Baldor 2 Hp 3 phase, 220 amps
Toledo Scale
1,000 lb Capacity
Oil Heaters
250,000 BTU's

KELLER BROS.
(Buffalo Springs) Lebanon, PA

717-949-2000 or 1-800-363-2767

HEAVY DUTY & LIGHT TRUCK CENTER

1997 FORD
F250
XL, AT, V8, A/C,
13,000 Miles



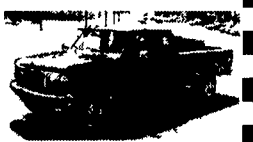
1997 FORD F350
STAKE BODY
Power Stroke Diesel,
4x4 AT, A/C, 6 Speed,
Dual Rear Wheels,
XLT Trim



1997 CHEV 2500
SUPER CAB
AT, V8, Low Miles,
White



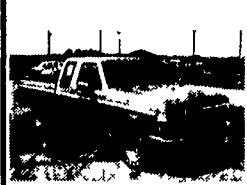
1995 FORD F250
SUPERCAB 4X4
Power Stroke Diesel,
XLT Trim, Low Miles



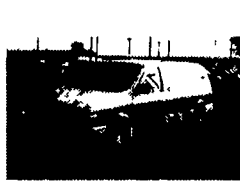
1997 NISSAN
4X4 SUPER CAB
5 Speed, AC, Cass.,
9,400 Miles, Bal.
Factory Warranty, Red



1995 FORD F150
SUPERCAB XLT
4x2, AT, V8, Nice Truck



1992 PLYMOUTH
GAND VOYAGER
Loaded, 7-Passenger



1999 FORD F550
DUMP TRUCK
Power Stroke Diesel,
4x4, AT, A/C, 12 Ft.
Dump Box



1998 FORD
RANGER
SUPERCAB 4X4
XLT, 4L, AT, 5,000 Miles



WINDSTARS
2 - 1996 w/Quad
Captains Seats
2 - Used 1998s



99 FORD F-350
CREW CAB
4X4 DIESEL
Chassis Cab



1995 FORD
EXPLORER XLT
4-Door, Leather,
Moonroof, Low Miles



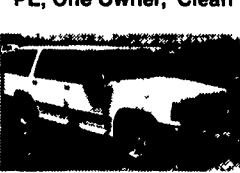
1993 JEEP
LAREDO GRAND
CHEROKEE
AT, A/C, Most Options,
Alum. Wheels, Local
Trade



1989 FORD
BRONCO II
XLT, 4x4, 5-Spd.,
Red/Silver



1994 FORD
EXPLORER XLT
4X4, V6, AT, A/C, PW,
PL, One Owner, Clean



1996 GMC JIMMY
4-Dr, Black, Loaded,
SLE, Pkg. Alum.
Wheels



1993 GMC
SONOMA
Super Cab, 4x2, AT
SLE Pkg, Low Mile



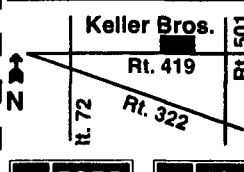
1994 DODGE
GRAND
CARAVAN Loaded,
Low Miles, Local Trade



1988 CHEVY S10
SUPER CAB
4x4, AT, Sport, Low
Miles



86 F350 DUALY
XL, Diesel, AT, A/C,
Very Clean



**KELLER BROS. FORD HAS
SERVED CENTRAL
PENNA. AREA FOR MORE
THAN 75 YEARS.**