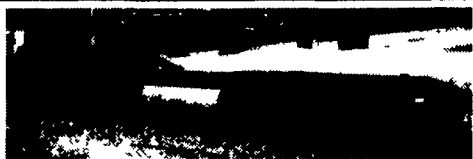




**1990 Jerr Dan 22' Rollback Body**  
w/Winch, Tractor Pockets, 10 Ton  
Complete to Install On Your Truck  
**\$6,500**



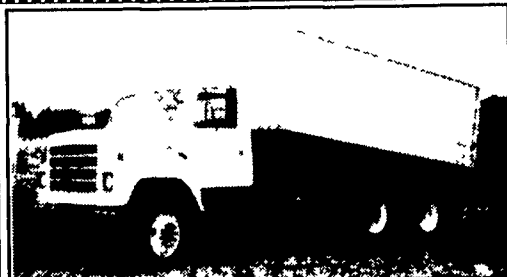
**1986 Ford 7000 With**  
26' Jerr Dan Rollback 29,500 GVW  
**\$12,500**



**1975 Tanco 45' Drop Deck Trailer**  
w/Beaver Tail & Ramps  
Very Good Condition  
**\$7,500**  
Also: 1987 Ford F350 w/15' Danco Roll  
Back Ex. Cond:  
**\$9,500**



**96 GMC 1500 Xcab 4x4 Pickup**  
SLE Package, 5.0, Auto, Loaded, 33K Miles Left Side  
Damaged  
**\$11,500**  
**THOMPSON MOTORS**  
**610/346-8588**  
**610/346-8890 - Fax on Demand**  
Inventory List



**1988 IH 2275 NTC-315**  
7 Speed, P/S, 204,000 Total Miles, 52,000 GVWR,  
New Paint and 16' Scott Custom Grain Body, Road  
Ready  
**\$24,800**  
**K. T. GRAHAM, INC.**  
4407 Oregon Pike, Ephrata, PA 17522  
**717-859-3168**

Detroit V8-71-T Diesel Motors. One New, \$3,000.  
One Used- \$1,000.  
(717)762-7940.

FOR RENT OR SALE: 32'  
flatbed trailer, \$20/per day,  
\$100/per week. Call  
717-733-8246

For sale car trailer, 14x6'  
717-367-7148

GMC 7000 1980 C&C,  
25,500 GVW, 10x20 tires,  
good shape.  
610/253-5793.

MACK PARTS FOR SALE:  
Engines, blocks, heads &  
cranks,  
cabs, hoods & doors,  
trans, rears,  
ALL MACK PARTS  
REASONABLE PRICES  
MACK TRUCKS BOUGHT  
(complete or parts)  
888-625-6485.

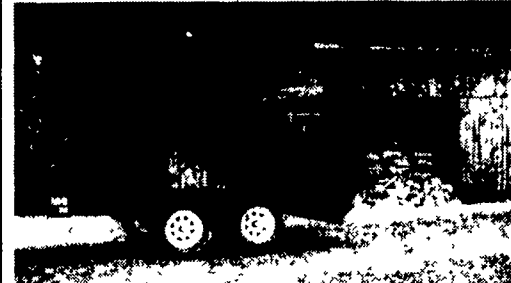
Menac 45' flatbed trailer,  
1986 w/Tico 6-ton traveling  
boom (same as Hiab),  
\$11,000. 717/354-3105.

Metal Racks for Dodge  
Pick-Ups 1972-1993. Call  
Mornings 7:30-10:00AM  
(717)949-3769.

Mack Landem axle dump.  
We have many others  
717-463-3701

Ford single axle dump. We  
have many others. Call  
717-463-3701.

**Load Boss Trailers**



**Quality Built Hwy. Dumps**

Built To Suit Your Working Needs

6x10 7,000 GVW.....**\$2,999**

6x10 10,000 GVW.....**\$3,299**

Delivery Available

**Save \$ Buy Direct**  
**From The Manufacturer**  
**814-623-8696**

**Lenox Farm Supply**

RR #1, Box 119A  
Hop Bottom, PA 18824  
**717-289-4349**

**DOG DAYS OF SUMMER SALE!!**

SALE RUNS FROM  
AUG. 25TH TO SEPT. 1ST  
STRAIGHT SALE PRICES ONLY!

**1998 Chevy Silverado Ext. Cab**, 3rd door, 350  
AT, AC, 4x4, PW, PL, Tilt, Cruise, Leather, 14,000  
miles, 2-tone paint, Carmine Red, Bed Liner, Tow  
Package, 1 owner..... **\$25,900 Sale \$25,500**

**1997 Dodge Ram 1500 Ext. Cab Sport**, 4x4,  
318, AT, AC, PW, PL, Tilt, Cruise, Tinted Glass,  
Only 10,000 miles, Red, Factory Warranty  
..... **\$23,900 Sale \$23,500**

**1997 Ford F350 XLT Crew Cab**, 4x4,  
"Powerstroke Turbo Diesel", AT, AC, PW, PL, Tilt,  
Cruise, Alloy Wheels, Stereo Cass, Only 10,000  
Miles, Ton of Factory Warranty, Candy Apple Red  
w/Grey Cloth Int, Like Brand New  
..... **\$31,900 Sale \$30,900**

**1996 Dodge Ram 1500 SLT**, Reg. Cab, Short  
Bed, 360 V8, AT, AC, PW, PL, PW Mirrors, Dual  
Air Bags, only 41,000 Miles, Maroon & Silver,  
..... **\$18,900 Sale \$18,200**

**1996 Dodge Ram, Ext. Cab, 1500 Sport**, 2 WD,  
318, AT, AC, Tilt, Cruise, Tinted Glass, Fiberglass  
Bed Cover, 54,000 Miles, Alloy Wheels, Sharp  
Truck! ..... **\$16,900 Sale \$16,500**

**1995 Ford F-250 XL, Ext. Cab**, Long Bed, 2WD,  
300 6-Cyl., AT, AC, Bench Seat, High Miles, Runs  
Strong, 1 Owner, ... **Was \$10,900 Now \$8,995**

**1993 Chevy Silverado 1500, Reg. Cab**, Short  
Bed, V8, 5-Spd., AC, PW, PL, Tilt, Cruise, Teal  
Green, Alloy Wheels, 71,000 Miles, Looks Nice,  
..... **Was \$14,900 Now \$14,500**

**1991 Dodge Ram 2500**, Cummins Turbo Diesel,  
4x4, Long Bed, AT, PS, PB, Cruise, 111,000 Miles,  
Ready To Pull, White, Chrome Wheel ..... **\$10,900**

**1988 Dodge Dakota**, 4x4, Reg. Cab, Long Bed,  
3.9 Liter, V6, AT, AC, PS, PB, Blue & Silver,  
102,000 Miles, Matching Topper ..... **\$5,900 Sale \$5,400**

**1987 Chevy S-10 PU**, 2WD, 5 Spd., Local Trade,  
112,000 Miles, Topper, Runs Great  
..... **\$2,900 Sale \$2,300**

**1985 Toyota Tk.**, 5 Spd., 4x4 Bed Liner, Local  
Trade, New Inspection, Runs Great  
..... **\$2,900 Sale \$2,600**

**1985 Ford F-250 XLT Heavy Duty**, 6.9 Ltr,  
Diesel, AT, AC, PW, PL, Tilt, Cruise, Matching  
Topper, 1 Owner, Tow Package, 117,000 Miles  
..... **\$5,900 Sale \$5,400**

**1983 Ford Ranger**, "With Diesel Motor", 80,000  
Miles, PS, Runs Super, Blue .. **\$1,900**

(717) 949-6513

**Birchwood**  
Auto & Truck Sales

**1993 Ford 7.3 Diesel 50,000 Mil. Can**  
Hear Run..... **\$3,000**

(8) 11 R24.5 Retreads..... **\$50**  
Air Ride Lift Axle 11R 22.5 Tires  
New Brakes..... **\$500**  
**717-354-3199**

**LEFEVER BROS.**  
**CHEVROLET**  
**CHEVY TRUCKS** **Geo.**

YOUR DIRECT LINE TO GENUINE GM PARTS

**(800) 533-3837**

When you call the number listed above, you'll reach our wholesale  
parts specialists, who can help you keep your GM repair work  
moving quickly

- Ask about:
- Specializing in GM Medium Duty Trucks, Current and Obsolete.
  - \$500,000 Parts Inventory.
  - Parts Locator for Those Hard to Find Items.
  - We Ship Anywhere, Local Delivery Available.
  - Experienced, Knowledgeable Personnel.

Mon, Tues, Thurs, Fri  
7 30 a m - 4 30 p m  
Weds 7 30 a m - 8 30 p m  
Major Credit Cards Accepted

**(717) 432-9697**  
Quality Dealer Since 1921  
406 U S Rt 15 Dillsburg PA 17019

**GM Parts** **We want your business.**

**Kodiak**  
**Chevy Trucks**  
**CAT DIESEL POWER**

**HOSTETLER**  
**Truck Bodies & Trailers**  
**717-667-3921**  
Milroy, PA - Located between Lewistown  
And State College on Rt. 322 in PA.

Pickup Insert Dumper, Electric Hydraulic,  
Completely Self Contained 4000  
Capacity, Easy To Install  
**\$1,995**

Donahue 16' Grain Dump Trailer,  
16,000# GVW, 40" Sides, Dump Thru  
Gate  
**\$9,965**

Dump Trailers  
5'x8' Single Axle 5000# GVW **\$2,650**  
6'x10' Tandem Axle 7000# GVW **\$3,495**  
6'x10' Tandem Axle 10,000# GVW **\$3,855**

18' Deck Over Trailer, 16' Flat 2'  
Dovetail with 5' Ramps, 10,000 Lg  
GVW, Adj Coupler  
**\$3,395**

**Financing & Leasing Available**

Corn Pro Bumper Pull Livestock Trailer,  
Corn Pro, Rubber Torsion Axles,  
Treated Pine Floor  
6'x16' 3500# Axles **\$3,390**  
6'8" Wide x 16' Long 3500# Axles **\$3,575**  
6'8" Wide x 16' Long 6000# Axles **\$3,895**

Eby Trailers In Stock, Both  
Gooseneck & Bumper Pull  
**CALL FOR PRICES AND AVAILABILITY**

New Design Moltz Livestock Trailers  
Semi Round Front, New Sides and  
Rear  
6'x16' 7000# GVW **\$3,390**  
6'8" x 16' Long 7000# GVW **\$3,575**

1975 International Dump Truck, Good  
Cab & Drive Line, Dump Works Well  
**\$2,595**

Tool Boxes, 36"x18"x18" **\$147**  
24"x18"x18" **\$108** 42"x18"x18" **\$195**  
30"x18"x18" **\$135** 48"x18"x18" **\$163**