

Dairy Production Economics, Cow Care Techniques At Meeting

HAGERSTOWN, Md. — Dairy producers, processors, and suppliers will gather here on Tuesday, Nov. 10, to discuss critical issues affecting Maryland's \$1 billion dairy industry.

The program will be part of the Maryland Dairy Industry Association's (MDIA) 1998 Annual Meeting, slated for the Four Points Hotel on U.S. Route 40 West.

"We will focus on ways to enhance dairy operations for Maryland producers," said MDIA's president, Myron Wilhide of Detroit, Md. "It will be a full day of good information for all segments of the dairy industry."

Resource persons scheduled for the MDIA program include noted Cornell University dairy extension specialist Dr. David Galton, whose topic, "Profitability in the 21st Century," promises valuable insight and management tips for Maryland producers. He will be

joined by Penn State University dairy extension specialist Dr. Larry Hutchinson, presenting latest information on boosting milk production through proper foot care of dairy cows.

Dr. Stan Foltz of Maryland Cooperative Extension will lead a panel discussion on grazing and its effects on farmland in the Mid-Atlantic region. Leading suppliers to the dairy industry will be on hand to present new technology to industry participants.

Registration for the MDIA Annual Meeting opens at 8:30 a.m. on Nov. 10, with meeting and program events scheduled from 10 a.m. through 4 p.m. Luncheon will be served. All events take place at Hagerstown's Four Points Hotel.

Details of the program are available from MDIA headquarters at MDIA, Suite 1100, 1629 K Street, N.W., Washington, DC 20006, (202) 293-0476.

Troy Fair Open Holstein

(Continued from Page 28)

Valley Buck Cuddles, owned by Greta Braund; 3) Mt. Glen Mandel Jackie, owned by Ben and Dean Jackson.

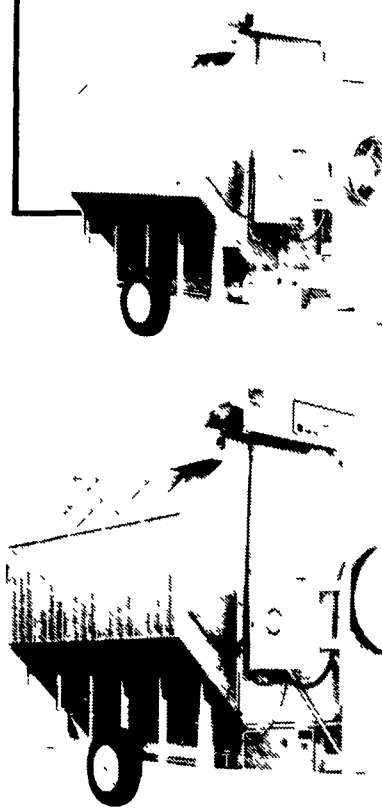
Senior Two Year Old: 1) Pack Herd Encore Bell-Toll, owned by Pack Herd Holsteins; 2) Du-Mar Astre Evelyn, owned by James Alderfer; 3) Ja-Jen Lindy Fancy-ET, owned by Ja-Jen Farm, of Columbia Cross Roads.

Junior Three Year Old: 1) MS Stost Gen-Rich Mattie Jo,

owned by Gen Rich Farm, of Columbia Cross Roads; 2) Gen Rich BR Star April, owned by Gen Rich Farm; 3) Ho-Crawf Chesapeake Lindy, owned by Farm; 3) Alidale Broker Sweet, owned by Promise Haven Farm.

Lifetime Production: 1) Braund Valley Jessica, owned by Aaron Sheeley; 2) Pleasant Corner Jena, owned by Roger and Karen Coulter; 3) Mt. Glen Counselor Tiffy, owned by Ben and Dean Jackson.

NOW! OPERATE CONTINUOUS FLOW OR AUTOMATIC BATCH WITH THE SAME DRYER!



- Economically priced
- Fully automatic
- Outstanding efficiency
- High capacity

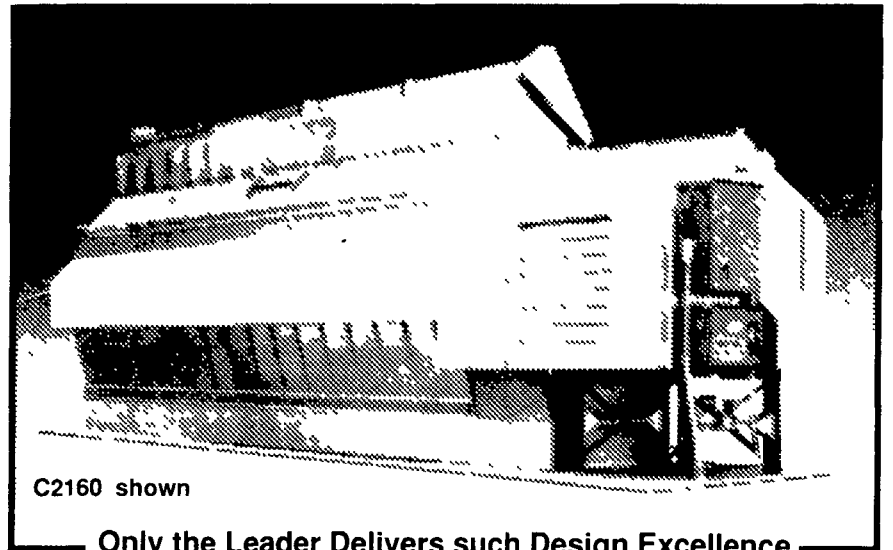
Here are the dryers for the farmer who has more to do at harvest than just dry grain.

The new CF/AB Series from Farm Fans are designed to allow drying by either CONTINUOUS FLOW or AUTOMATIC BATCH modes.

These dryers are specifically designed for full heat application for combination drying and dryeration. However, when operating AUTOMATIC BATCH, you can also select Dry and Cool application.

ASK US
ABOUT...

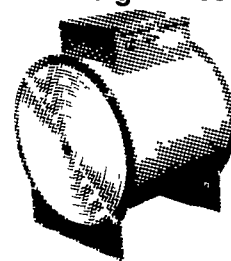
FARM FANS C-SERIES GRAIN DRYERS



C2160 shown

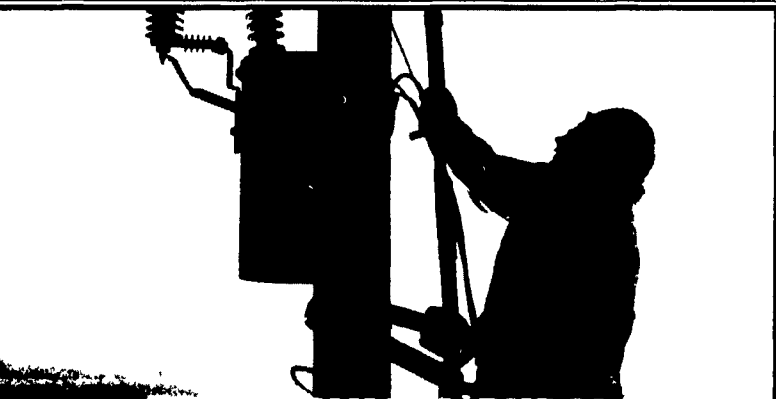
Only the Leader Delivers such Design Excellence

- Continuous flow full heat or dry and cool
- 2/3, 1/3 split plenum gives you the ability to maintain high capacity
- Capacities range from 300 up to 1,660 bph!
- Available with vane axial fans or centrifugal fans
- Low-profile design
- Fully automatic operation and safety controls



High Performance
Axial Flow
Aeration Fans
1/2 to 10 hp

FF FARM FANS, INC.



PENNSYLVANIA RURAL ELECTRIC ASSOCIATION/ALLEGHENY ELECTRIC COOPERATIVE, INC.

Visit our tent at Ag Progress Days
on the corner of Fifth and Main

Exhibits:

- Electric Competition Information
- Surge Suppression Products
- PA/NJ Electric Cooperative Information
- Geothermal Heating & Cooling Demonstrations

Pennsylvania and New Jersey Electric Cooperatives:

- Adams Electric Cooperative
- Bedford Rural Electric Cooperative
- Central Electric Cooperative
- Claverack Rural Electric Cooperative
- New Enterprise Rural Electric Cooperative
- Northwestern Rural Electric Cooperative
- Somerset Rural Electric Cooperative
- Southwest Central Rural Electric Cooperative
- Sullivan Rural Electric Cooperative
- Sussex Rural Electric Cooperative
- Tri County Electric Cooperative
- United Electric Cooperative
- Valley Rural Electric Cooperative
- Warren Electric Cooperative

PEOPLE YOU CAN COUNT ON.™

A Touchstone Energy Partner

I can't attend the 1998 Ag Progress Days but I'd like to know more about:

- BUILDINGS
- DRYER SERVICE
- NEW DRYERS
- FEED SYSTEMS
- ELEVATOR LEGS
- FEED BINS
- ROLLER MILLS
- MIXERS

NAME _____

ADDRESS _____

CITY _____ ST _____ ZIP _____

PHONE _____

- Please send information
- Please call



1248 South Mountain Road
Dillsburg, PA
717-432-9738

GRAIN DRYING, STORAGE, AND PROCESSING THE AGRI INDUSTRY TRUSTS!

SEE US AT AG PROGRESS DAYS - EAST 5TH STREET