

# HAMILTON EQUIPMENT, Inc.

P.O. Box 478,  
EPHRATA, PA 17522

WHOLESALE DISTRIBUTORS  
PHONE 717-733-7951

For Your Nearest Dealer Please Call Us!

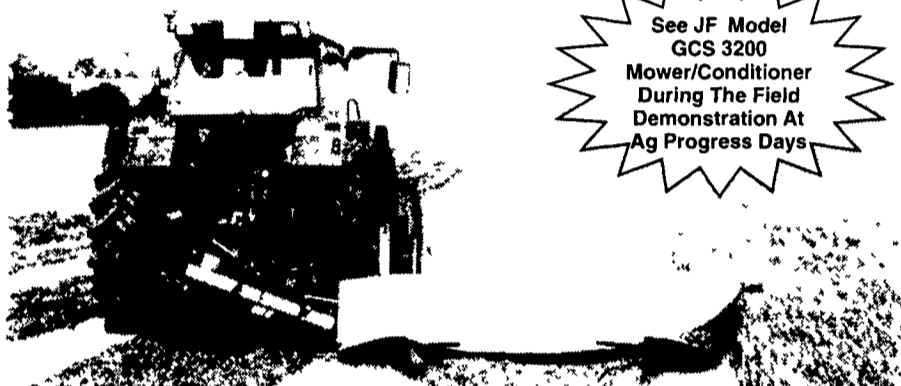


VISIT OUR EXHIBIT AT AG PROGRESS DAYS - EAST 1<sup>ST</sup> STREET



ARE YOU READY FOR THE BEST? SEE YOUR JF/STOLL DEALER TODAY.

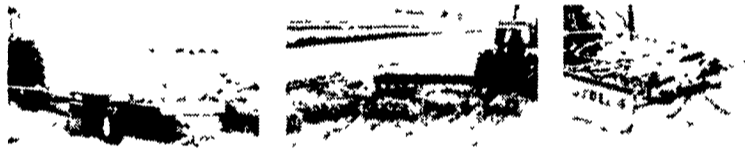
## A CUT ABOVE THE REST.



See JF Model  
GCS 3200  
Mower/Conditioner  
During The Field  
Demonstration At  
Ag Progress Days

JF SB Series Disc Mowers From 5' 3" to 9' 2" Working Widths

JF's new Disc Mower is built to provide years of dependability and low-cost operation. This mower's drop-in design means gears and bearings can be changed at each disc. That means repairs can be made in the field—not in a workshop. Our quality shows where it counts the most—and that's your bottom line.



JF • CMT2500C Mower/Conditioner  
9' 2" Working Width

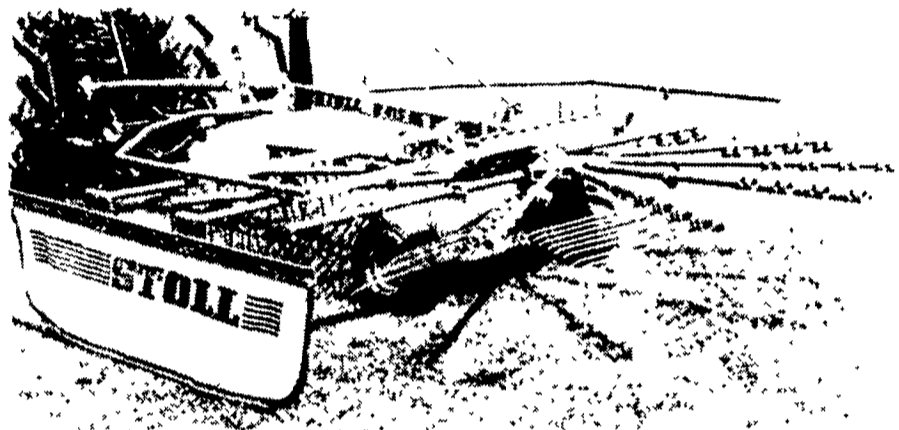
Stoll R1400 Side Delivery Rake  
Adjustable Working Width 11' 0" - 20' 6"

Stoll Rotary Rakes  
Working Widths 9' 6" - 13' 7"



ARE YOU READY FOR THE BEST? SEE YOUR JF/STOLL DEALER TODAY.

## RAKE HAY THE BEST WAY.



Stoll Rotary Rakes—Working Widths 9' 6" - 13' 7"

The side delivery design of a Stoll Rotary Rake allows you to lay single or double windrows without roping to make baling or forage harvesting go even faster. The Stoll rake will condition and lay even heavy, wet hay in a light, fluffy windrow that will let the crop dry evenly. Four sizes available.



JF • CMT2500C Mower/Conditioner  
9' 2" Working Width

Stoll R1400 Side Delivery Rake  
Adjustable Working Width 11' 0" - 20' 6"

JF SB Series Mowers  
Working Widths 5' 3" - 9' 2"



ARE YOU READY FOR THE BEST? SEE YOUR JF/STOLL DEALER TODAY.

## CR Rotary Tedder Rake

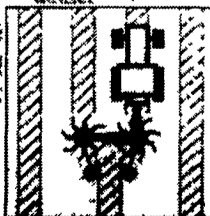
### 100% good clean raking

The CR Rotary Tedder Rake provides effective windrowing of two swaths up to 7'. It also windrows spread crop into one well-shaped and stable swath.

### Unique swath rollers

JF's patented swath rollers form a perfect swath for baler or forage harvesters.

Adjusting from spreading to raking is quick & easy—simply change the position of the rake tines by using a spring loaded pin.



Working width, raking	9' 10"
Working width, spreading	10' 6"
Transport width	8' 10"
Working speed, max.	10 MPH
Power consumption	16 HP
Weight	175 lbs.
Tire dimension	400x8-4
Number or rake tines	2x8

## FARMLUND INC.

### Round Bale Wrapper and Mover

"Two machines in one" This three point hitch, hydraulic base wrapper not only wraps bales fast but can be used to move the bales to the barn or feed lot. A one man operation at its' best for feeding high quality balage.



See Farmlund  
Round Bale  
Wrapper During  
The Field  
Demonstration At  
Ag Progress Days

#### GENERAL SPECIFICATIONS

Horsepower requirement - 65+ • 2 sets of hydraulic remotes required  
Round bale width - 39" to 60" • Round bale diameter - 54" to 60"  
Wrapping time - approximately 2 minutes