

Belleville Poultry

Belleville, Pa.

Wednesday, August 12, 1998

Report supplied by Auction

Geese: 2.00-3.00 ea.
 Turkeys: 4.00 ea.
 Guineas: 3.00 ea.
 Roosters: 5.00-7.50 ea.
 Bantams: .25-4.00 ea.
 Heavy hens: 1.00-3.00 ea.
 Silkies: 3.00 ea.
 Muscovy hens: 6.00-7.00 ea.
 Muscovy drakes: light 7.00, heavy 12.00-14.00 ea.
 Mixed ducks: 2.00-4.00 ea.
 Barn pigeons: 2.25-2.40 ea.
 White birds: 2.50-3.00 ea.
 Fancy birds: none.
 Peacocks: none.
 Pheasants: chicks 1.50 ea.
 Doves 4.50 ea.
 Quail 2.00 ea.
 Guinea Pigs: .75-2.75 ea.
 Rabbits: under 4 lbs. .25-2.00 ea., 4-6 lbs. 1.00-2.50 ea., over 6 lbs. 5.00-12.00 ea.
 For more information phone 717-242-2898.

NY Phil Frozen Eggs

Atlanta, GA.

August 07, 1998

EASTERN REGION FROZEN EGGS, AUGUST 07, 1998 FEDERAL-STATE

Prices were mixed, and most trading occurred in similar ranges to last week. The market tone was cautiously steady. Demand was fair and centered on immediate needs as both buyers and sellers watched shell egg markets decline. Floor stocks were adequate. Liquid and frozen eggs (ingredients included) processed under federal inspection in the Eastern region for the week ending August 1, 1998 were 2% more than both last week and the same week last year. Plants worked at least full schedules.

WHOLESALE SELLING PRICES (CENTS PER POUND IN 30 LB CONTAINERS) TRUCK LOTS LTL (MIN 25 CONT)

RANGE MOSTLY RANGE WHOLE 47-50 48-49 50-59, BLENDS (1) TFEWR 60-74, WHITLS 39-42 40 41 42-49 SUGARED YOLKS (MIN 43% SOLIDS) 66-72 68-70 72-79 SALTLD YOLKS (MIN 43% SOLIDS) 63-68 64-66 68-82, (1) WHOLE PLUS YOLK PLUS SWITFNER GENERALLY 28-32% EGG SOLIDS

National Egg Market Report

Atlanta, GA

August 12, 1998

NATIONAL EGG MARKET - AT A GLANCE Prices were unchanged to lower for the large sizes and unchanged to higher for the lighter weights in the Midwest, Northeast, and Southeast, and unchanged elsewhere. The market tone was steady to weak for the large sizes and steady to firm for the lighter weights. Demand was light to good, and best where featured and into resorts. Supplies of medium and small were tight to adequate. Extra-large and large were adequate to fully adequate and jumbos were seasonally tight. Breaking stock supplies were generally adequate from regular sources and additional supplies were less available in the Central region. The undertone was steady to instances fully steady in the Central region. Light type hen offerings were sufficient for full processing schedules.

Delmarva Broiler Report

Atlanta, GA.

August 12, 1998

Movement of ready-to-cook whole birds was no better than fair and typical of midweek activity. Seller offerings ranged tight to adequate on the 3 pound and heavier sizes, fully adequate on the lighter weights. Live supplies were moderate, weights were often noted as lighter than desired and some plants were unable to operate at full capacity as a result. Less than trucklot asking prices were unchanged at 72 to 86 cents. Trade sentiment was about steady. In the parts complex supplies were in generally good balance and clearing satisfactorily at most plants.

ESTIMATED SLAUGHTER OF BROILER/RHYERS IN DELMARVA (000)
 ESTIMATED ACTUAL AVG WEIGHT
 ACTUAL AVG WEIGHT

08/12	08/10	08/10	08/05	08/03
2,404	2,423	4,83	2,390	4,80

*BROILER/RHYER CURRENT NEGOTIATED PRICES FOR IMMEDIATE DELIVERY INCLUDES MOSTLY MULTIPLY-DROPSHIPMENTS OF BRANDED AND WING TAGGED TO NEW YORK CITY FROM DELMARVA

BRANDED US GRADE A RANGE 71-91 WEIGHTED AVERAGE 75.51 NO OF BOXES 7,333

*7 of 9 plants reporting

E. PA & NJ Poultry Report

Atlanta, GA.

August 10, 1998

SOUTHEAST HEAVY LIVE HEN REPORT AUGUST 10 1998 FEDERAL-STATE

Majority prices were slightly lower than a week earlier. Demand was moderate for fully adequate offerings. Finished product interest improved and was fair when compared to a last week. Undertone on heavy fowl was generally steady.

HEAVY TYPE HENS (7 POUNDS AND UP)* FINAL PRICE CENTS PER LB. GENERALLY FOR SLAUGHTER WITH WEEK OF 10-AUG-98

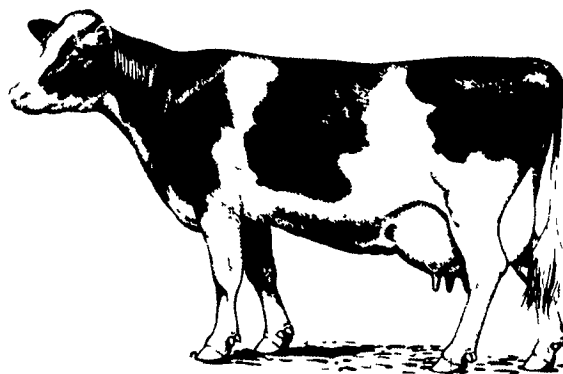
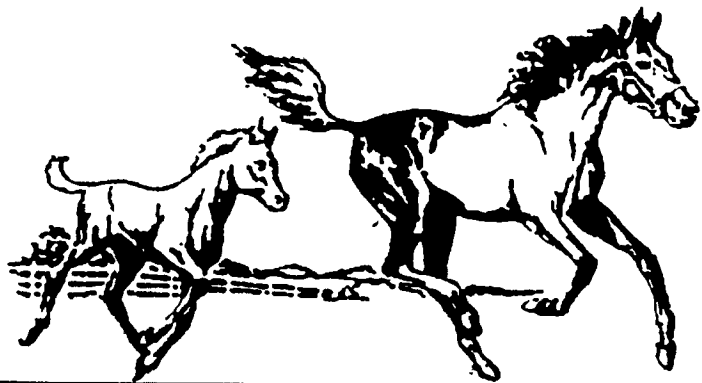
RANGE MAJORITY WTD AVG. AT FARM BUYER LOADING 13.3-22.5 CENTS/LB 14.5-20.5 16.99 AT FARM PRODUCER LOADING. TOO HIGH TO REPORT FOR PLANT TO FLOW TO REPORT

*WEIGHTS UNDER 7 LBS. SUBJECT TO DISCOUNT

VISIT PENNFIELD FEEDS

AG PROGRESS DAYS

AUGUST 18, 19, 20 - DAIRY & LIVESTOCK TENT



HORSE FEEDS

- PERFORMANCE HORSE FEEDS
- BROODMARE/YEARLING FEEDS
- FOAL FEEDS
- SENIOR HORSE FEEDS
- PLEASURE HORSE FEEDS
- FEEDS WITH HIGH FAT
- FEEDS WITH SHREDDED BEET PULP

DAIRY FEEDS

- CUSTOM FORMULATED LACTATING RATIONS
- SUPER FLAKED GRAINS
- DAIRY RATIONS WITH WHOLE COTTON SEED
- PRE-POST FRESH FEEDS
- SUPER PALATABLE CALF STARTERS
- HEIFER GROWER WITH BOVATEC®
- ALL MILK MILK REPLACERS



**STOP BY AND SIGN UP FOR OUR
 FREE FEED DRAWINGS
 NEW WINNERS EVERY DAY**



**Round the Clock
 Customer Service
 1-800-995-0333**

