



85 IVECO 340, Diesel
144 000 Mi 18 900 Wt
140 HP Good Tires Cab
to Axle 125 Need Body
Work \$1,600

York Co.
Ph. 717-244-8702



92 UD 1800 Truck, Diesel,
56 000 Mi 17 640 Wt
210 HP Good Tires Cab
To Axle 112' \$12,300.

York Co.
Ph. 717-244-8702

'93 Chevy S10 Tahoe extended cab, V6, 5 spd, PS, PB, AM-FM cassette, 39,000 one owner miles, excellent condition, \$7,950 717-733-2873

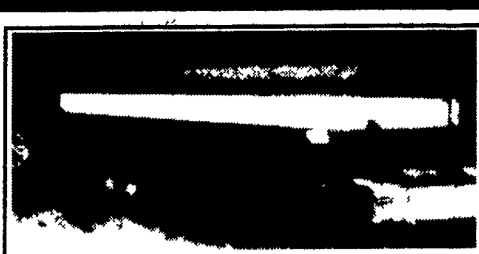
93 Ford Explorer XLT 4x4, PW, PL, tilt, cruise, cassette, black w/tan interior, 104,000 miles, \$7900 717/336-7375 No Sunday Calls

'93 Ford XL F150, 4x4, 300 EFI, 5 spd, PS, PB, AM-FM, dual tanks, new radials, 69,000 miles, excellent condition, \$9,950 717-733-2873

'94 Dodge 1500, HD, 1/2 ton, 3.9 V6 Magnum, 5 spd, PS, PB, AM-FM, 6,400 GVW, new radials, excellent condition, \$8,900 717-733-2873

'97 Bison 16' cattle trailer, like new, maroon & gray, \$3000 firm 410-357 4073 after 7pm or leave message

Aluminum construction topper w/side doors, fits 88-98 GM truck, like new, \$750 717/776-6664



Steel Water Tank Trailer, 6 500 Gallon 20 Inch Rubber with Spreader for Driveway Dust Control

\$2,500

Call Martin Mulch • (717) 733-1602



1980 PAYSTAR 5000

4500 Tank and Spreader, Epoxp Inside and Out, 55,000 Lb. Rears with 10:00-20 Rubber, Air Seat, Good Condition

717-352-3586

1989 Mack Super Liner

E7 Mack engine, 400hp, Fuller 9-spd trans, Mack rears w/Neway Arrride, AC, Dynatard engine brake, AM/FM cassette, cellular phone, twin exhausts, (2) 135 gal aluminum fuel tanks, 42" sleeper, 11R-24 5 Lo Profile on steel Budds, aluminum front, good condition

\$17,500 OBO

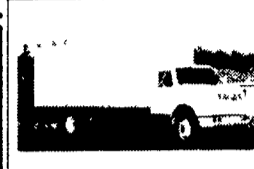
717/880-1221, 717/359-7598



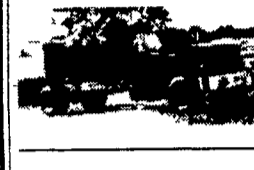
S Series International Cab and Good

Hood-First \$250

Call (717) 733-1602



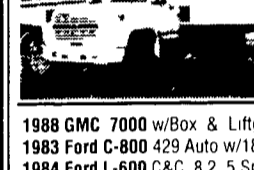
1991 International 4700 DT 360 5 Spd 2 Spd PS Hyd Brakes 27 500 GVW w.22 Ft Box & Liftgate Just Turned 100 000 Miles \$16,750



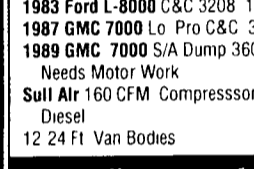
1990 GMC Topkick 366 Fuel Inj 5 Spd 2 Spd PS Hyd Brakes New Paint Just Under 30 000 GVW High Miles Ex Cond \$9,250



1989 GMC S/A Dump 427 Allison Auto 2 Spd PS Air Brakes 32 000 GVW Under 100 000 Miles New Paint Reduced to \$10,250



1989 Ford F-700 C&C, 370 5 Spd 2 Spd, PS Hyd Brakes 26 500 GVW, Low Miles \$7,750



1988 GMC 7000 w/Box & Liftgate 366 5 Spd PS
1983 Ford C-800 429 Auto w/18 Ft Box
1984 Ford L-600 C&C 8.2 5 Spd 2 Spd PS
1983 Ford L-8000 C&C 3208 10 Spd
1987 GMC 7000 Lo Pro C&C 366 5 Spd Needs Trans Work
1989 GMC 7000 S/A Dump 3600 5 Spd 2 Spd Hyd Brakes Needs Motor Work \$4,950
Sull Air 160 CFM Compressor w/John Deere Diesel Reduced \$2,750 Starting At \$400
12 24 Ft Van Bodies

Klines Truck & Equipment Sales & Service

Hagerstown, Md 21740 • located off I-81 at MD/PA Line 301-797-4068

Detroit V8-71-T Deisel Motors One New, \$3,000 One Used- \$1,000 (717)762-7940

DODGE RAM 2500 4x4 '98 5.9 ltr V8, auto trans, A/C, ltr slip rear, AM/FM cassette, bedliner, includes plow! Ready for work! #D1118 \$22,999 Call Brian McCoog at Fred Beans Dodge, (215)348-7500

For sale car trailer, 14x6' 717-367-7148

Gooseneck trailer 20x7 steel double decked with dressing sleeping area, new tires, \$2500 814/383-4310

E-TOWN DODGE

'94 Chevy K2500 Super Cab 4x4 Silverado

(47) New quad cabs available.

(8) Used New Style Pickups mostly SLT's

(12) 1998 24 Valve New Style Diesel Quad & Reg. Cab In Stock

'97 Tahoe LT w/Leather very nice

(15) Durangos in stock

ASK FOR MILTON HESS

Certified Truck Specialist

717-367-6644

717-653-6667

Elizabethtown, PA



USED EQUIPMENT LANDSCAPE BODY

Aluminum Dump Body 8'6" Long x 88" wide with 12" high side

GRAIN BODY

18'X96"X48" High Omaha Standard Steel

LIVESTOCK BODIES

- (1) 9'x92"x6' Eby
- (1) 9'x82"x6' Eby
- (1) 9'x94"x6'9' Eby
- (1) 12'x92"x6'6" Eby with double deck - like new
- (2) 18'x96"x6'3" Eby
- 19'x96" Eby w/Deck Rail

GOOSENECK

- 1998 20'x7'x6'9" 4-Star
- 1981 22'x8'x6'6" Eby
- (1) 1997 24'x8'x6'9" Eby Ruffnecks

M.H. EBY, INC.

1194 Main St. (Route 23) Blue Ball, PA 17506 (717) 354-4971 (800) 292-4752 4435 State Route 29 West Jefferson, OH 43162 (614) 879-6901 (800) 752-0507

Huntingdon Equipment

Rentals Available

GOOD USED EQUIPMENT

Huntingdon Valley, PA • 215-672-9667 • 1-800-543-3833 • Eddie

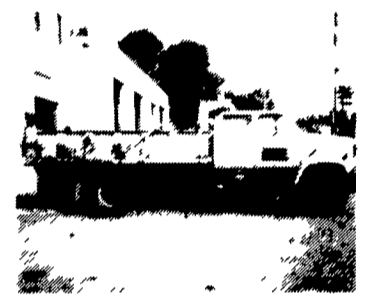
LOST OUR LEASE - EVERYTHING MUST GO!

- 1980 International Tandem Axle wet line, 290 Cummins, 7 speed, inspected & ready to work, \$5,000⁰⁰

- We have Line Trucks - 10 of Them
- Gas or diesel
- Can dig a hole from 8" to 36" diameter
- 11000 lbs to 16,000 lbs boom capacity
- Boom height 32 feet to 42 feet
- Prices start at \$3,500⁰⁰ MUST GO



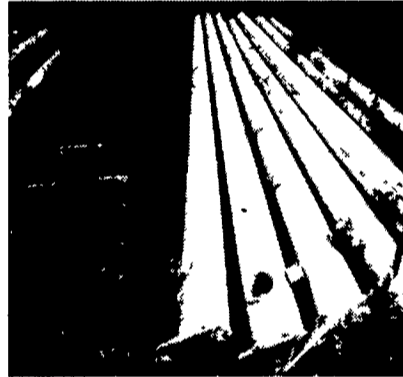
Rope For Sale by the Reel or Cut to Length - 3/4" to 2" diameter



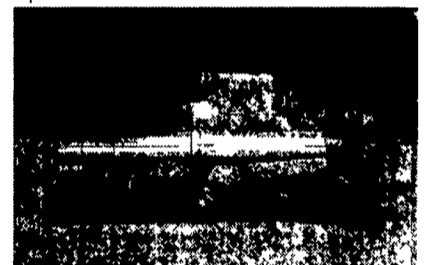
1986 Chevy 5 Man Cab Dump, 3208 Cat - 5/2, Air Brakes Dump with Lift Gate Dump 14' Long, GVW 34,000 pounds



Material Handler Bucket Truck - 42 Bucket with Jib 1981 and 1982 Diesel Engine - Auto or Stick - Special \$9,995



Aluminum & Steel Poles for Lights or Flag Poles. We have used lights Call for Information



Barber Greene SA-41 Paver/Finisher Diesel - Ready to Work

Tank Trailers:

Heil - Aluminum 7,500 Gallon - 1980
Fruehauf - Aluminum 8,250 Gallon, 1957

DIGGER DERRICKS/AERIAL BUCKETS/UTILITY EQUIPMENT

IN ALUMINUM BODIES EBY BUILDS IT

M H Eby custom-builds aluminum truck bodies for the agri-transportation market Nobody offers more sizes and options in

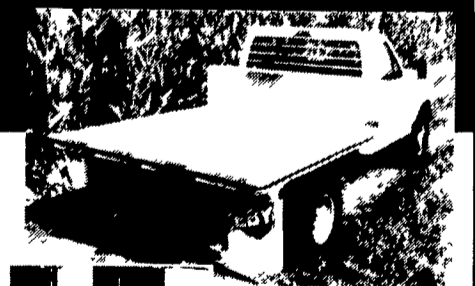
- FLATBED BODIES - Lengths to 32', choice of 5 widths
- GRAIN BODIES - Lengths to 24', landscape and general purpose dumps to 12'
- LANDSCAPE BODIES - Lengths to 12' We'll build to your specs!

For greater payload capacity, Eby's aluminum design is equal in strength to steel and up to 40% lighter Our corrosion-resistant components never need painting That means minimum maintenance, improved appearance and higher resale value

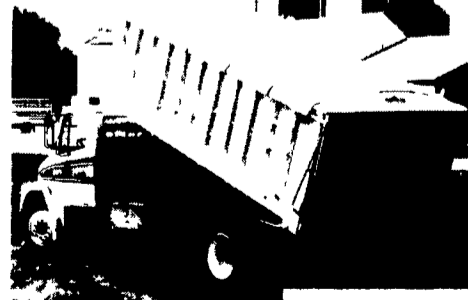
Eby products have superior standard features And we offer customer options for virtually any application Agriculture is your business - building bodies to haul it is ours.



1194 Main Street Blue Ball, PA 17506



Let EBY custom build one for you.



800-292-4752