

DUMP TRUCKS

6 '93 FORD F700s
only at the Giant...

'SPANKEY'S

717 737-7777
717 732-7777
717 241-2410

Visit us at our Web site: <http://www.spankeys.com>



1994 Ford Aerostar Extended
3.0L V6 AT AC Most options 69,319 mi. Hit in left rear and has right side swiped. Runs and drives.
\$2,300



1990 Dodge Grand Caravan LE
3.3L AT AC. Most option. 80,549 mi. Hit in left rear. Runs.
\$1,500



1994 Plymouth Voyager
3.0L V6 AT AC PL PM Tilt, Cruise Cass. 50,778 mi. Needs left 3/4 front.
\$2,300



1992 Ford Ranger XLT
3.0L V6 5 spd., AC Delays 74479 mi. Needs front.
\$1900



1996 Dodge Ram 3500 SLT Laramie
4x4, 8.0L V10, AT, AC, most options, 12,777 mi., engine fire
\$6,500



1997 Ford Ranger XLT
4x4, Supercab, 4.0L V6, AT, AC, Cruise, Tilt, Cassette, Delays, 28,448 mi., Rolled
\$5,500

John E. Kreider
717-361-9296

KEYSTONE TARPS SERVICE & SALES

Is A Manufacturer Of Custom Tarps

- Systems
- Tarp Straps
- Storage Covers
- Load Straps
- Gloves
- Used Railroad Ties

VISA 1-800-798-TARP (8277) MasterCard

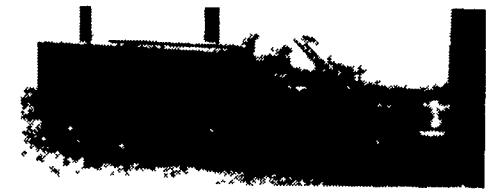
FAX 717-435-0036 717-435-0752

FOR SALE

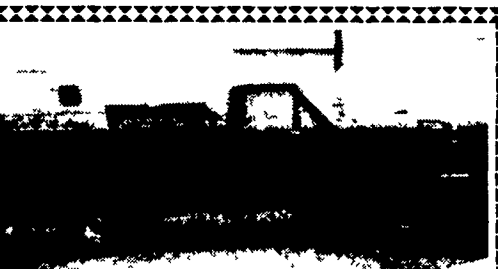


16' Gooseneck Dump Trailer
21,000 GVW, Tandem Duals, Vacuum Over Hydraulic Brakes, Removable Sides
\$6,000
Ph. 814-967-2907

FOR SALE

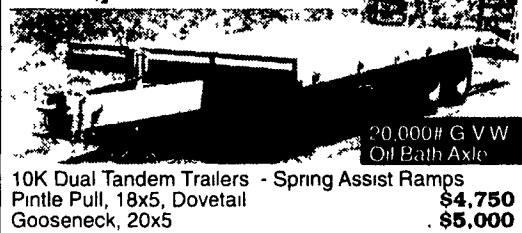


1992 Chevy 3500 Silverado
11,000 GVW, Dual Wheels, 9' Open Service Body 6.5L Diesel, Auto, Air, 92,000 Miles
Towanda, PA
717-364-5460
Early Mornings or Evenings
Ask for John



1990 FORD F-250 XL 4x4
Utility Body, 5.8 EFI, Auto, 8600 GVW, 49,000 Miles, Dual Tanks, Runs Great, Good Title
\$4,800
717-355-0644

Appalachian Manufacturing, Inc.
330-222-2468



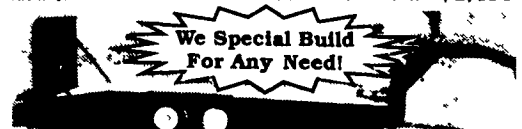
20,000# G V W Oil Bath Axle
10K Dual Tandem Trailers - Spring Assist Ramps
Pintle Pull, 18x5, Dovetail
Gooseneck, 20x5
\$4,750
\$5,000



24' Gooseneck, 4' dovetail, 12,000# G.V.W., 6,000# axels w/easy lube, electric brakes, 7.50-16 tires, breakaway kit, ramps w/pressure treated deck, standard **\$2,950**



16' Car Hauler, diamond plate deck with W/D rings, self storing ramps, 7,000# G V W., 3,500# axels w/elect brakes, 82" between wheel wells, breakaway kit incl **\$1,495**



21' Low Profile, 10,000#, axel w/easy lube, elect. brakes, pressure treated deck, 10,000# G V W., gooseneck
Bumper pull **\$3,100**
\$2,950

We Special Build For Any Need!

'92 Ford XL F150 super cab, 300 EFI, 5 spd, PS, PB, AM-FM, dual tanks, 50,000 one owner miles, burgundy, \$8,600
717-733-2873

Lancaster Farming, Saturday, August 15, 1998-D33

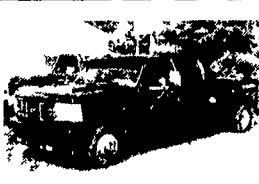
'91 Hillsboro 24' flatbed gooseneck w/deckover, 14,000 GVW, dove flat combo, like new, \$5000
OBO 717-354-2281

Heavy duty steel flatbed, 8'x9' w/side rakes & reef hitch, \$1300 9' heavy duty Fisher snowplow, \$2000
717-367-9298



1998 FORD CONVERSION VANS
Ride in Comfort, Low Tops Two In Stock, #8490 Listed At \$32,225

NOW ONLY **\$23,999**
Including All Rebate
All Ready For Immediate Delivery At Prices That will Make You Smile!

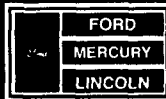


1996 FORD F350 CREW CAB DUALY
4x2, 5 Spd, 7.3 Diesel PS, XLT Centurian Conversion, 10,000 Miles, Black



1999 FORD F350 4X2 2-3 YD. DUMP BODY
A/C Gas Automatic

Unless the Chapman Emblem is on Your Car or Truck... You Probably Paid Too Much!



CHAPMAN LEBANON

20th & CUMBERLAND STS. - RT. 422 WEST
9-9 DAILY, 9-5 SATURDAY • SHEEHY HOTLINE (717) 272-7671 OR 533-5293

A Division of THE CHAPMAN AUTO GROUP
PARTS DEPT OPEN DAILY 8-5 SAT & 12 717-273-8168

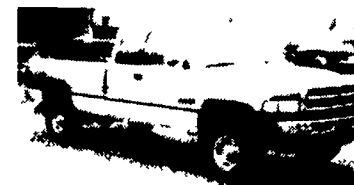
USED TRUCKS



95 GMC SL 2500 Ext Cab 350 FI Eng AT Ac AM FM Sliding Rear Window, 173 Limited Slip Rear 8600 GVW, 67,000 Miles Sandstone
\$14,900



96 Chev Chevelle 2500 Ext Cab 4x4 6.5 Turbo Diesel 5 Spd AC AM FM Sliding Rear Window 8600 GVW 173 Limited Slip Rear 50,000 Miles Teal Green
\$21,700



96 Dodge 2500 SLT Club Cab 4x4 5.9 Cummins Diesel 5 Spd AC PWDs PDLs AM FM Cass P Seat P Mirrors Sliding Rear Window 8800 GVW 4.10 Limited Slip Rear 44,000 Miles White & Silver
\$24,900



93 Chev K3500 Chevelle Crew Cab Dually 454 FI Engine 5 Sp AM/FM 10,000 GVW 4.10 rear Red & Silver 61,000 mi
\$16,900

MARTIN'S AUTO SALES

1025 W. Main St. New Holland, PA 17557
(717) 656-6621

LEFEVER BROS. CHEVROLET CHEVY TRUCKS GEO

YOUR DIRECT LINE TO GENUINE GM PARTS

(800) 533-3837

When you call the number listed above, you'll reach our wholesale parts specialists, who can help you keep your GM repair work moving quickly

Ask about

- Specializing in GM Medium Duty Trucks, Current and Obsolete.
- \$500,000 Parts Inventory.
- Parts Locator for Those Hard to Find Items.
- We Ship Anywhere, Local Delivery Available.
- Experienced, Knowledgeable Personnel.

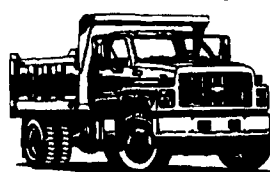
Mon., Tues., Thurs., Fri
7:30 a.m. - 4:30 p.m.
Wed. 7:30 a.m. - 8:30 p.m.
Major Credit Cards Accepted

(717) 432-9697

Quality Dealer Since 1921
406 U.S. Rt. 15 Dillsburg, PA 17019



We want your business.



Kodiak Chevy Trucks
CAT DIESEL POWER

BOWERS USED CARS INC.

Route 30 West of Abbottstown, PA
7015 York Rd. 717-624-7072



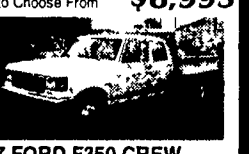
94 CHEVY S-10 PICK-UP, Auto PS PB AC
\$6,995



95 DODGE GRAND CARAVAN One owner V6 Auto PS PB AC 2 to Choose From
\$8,995



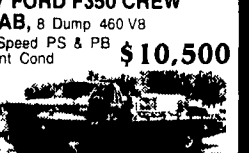
93 FORD PICKUP F150 EX. CAB, 4x4 351 V8 Auto Loaded 2 Mo/12,000 Miles Warranty
\$12,900



87 FORD F350 CREW CAB, 8 Dump 460 V8 4 Speed PS & PB Mint Cond
\$10,500



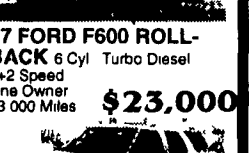
40 FORD STREET ROD V8 Auto PS PB PW & AC
\$21,000 OBO



87 FORD F600 ROLL-BACK 6 Cyl Turbo Diesel 5+2 Speed One Owner 73,000 Miles
\$23,000



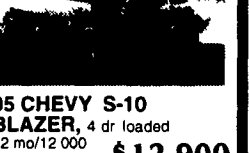
88 GMC 3500 DUALY 454, V8 Auto PS PB PW&L AC
\$10,900



95 CHEVY S-10 BLAZER, 4 dr loaded 12 mo/12,000 warranty
\$12,900



93 FORD F250 XL 4X4 8600 GVW Mayor Power Angle Snow Plow 351 V8 Auto PS PB AC 99,000 Miles
\$11,900



77 CHEVY C65, 24 Box New PA Inspection, V8 Big Block 5+2 Speed In Super Cond
\$3,995