

Bergey's

EXCELLENCE SINCE 1924

GET MORE TRUCK FOR YOUR BUCK!

1997
VOLVO
TRUCK
DEALER
OF YEAR



24 HOUR ROAD SERVICE & TOWING

- New & Used Truck Sales
- Truck & Trailer Tire Sales/Service
- Contract Maintenance
- Full Service Leasing
- Truck, Reefer, Tractor, Trailer Rentals
- Heavy Duty Frame Straightening
- Heavy Duty Front End Alignment
- Trailer Alignment
- Truck Collision Center
- Truck Body and Paint Center
- Mobile Truck & Trailer Wash
- Computerized Diesel Fuel Center

**** TOLL FREE 1-877-BERGEY3 ****

COME VISIT BERGEY COUNTRY TODAY!

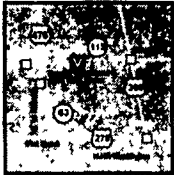
Route 113 • Souderton, PA

- Just off Exit 31 of I-476, Rt. 63 West to Rt. 113 North.
- Souderton Exit of Route 309, Rt. 113 South, 3 miles.

SALES HRS:
M-F 9A to 9P
Sat 9A to 4P
CLOSED SUNDAY

24 HOUR MONDAY TO SATURDAY
PARTS & SERVICE

VISIT OUR WEB SITE AT
bergeys.com



DETROIT DIESEL

CATERPILLAR



1980 PAYSTAR 5000

4500 Tank and Spreader, Epoxy Inside and Out, 55,000 Lb. Rears with 10:00-20 Rubber, Air Seat, Good Condition
717-352-3586



1976 Auto-car, 5000 gal. vacuum spreader truck. 2 liquid manure pumps, \$27,000 OBO. Will sell separately.
610-286-9708

Quic'n-Easy

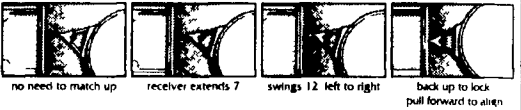
RECEIVER HITCH BY DMI

The Latest In-Tow-Vation!



- Fits under your truck bumper, mounting directly to your truck frame
- Brings the receiver to your load - extends 7" and swings 12
- Exclusive Proximity Hook up - one person gets it right the first time
- Spring "Cush'n" takes the push/pull out of towing lowering stress on the driver and truck drive train
- Tows whatever your truck is rated to tow - exceeds Class IV certification
- Accepts a variety of adapters drawbar ball step up or step down pintle hook and weight distribution system

Never Miss a Hitch Again. DMI



Weaver Distributing
1-800-Weaver-D
RR2, Box 470, Fredericksburg, PA 17026

FORD FORD FORD FORD FORD FORD FORD

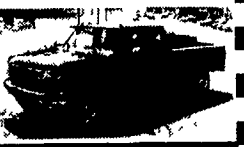
KELLER BROS.

(Buffalo Springs) Lebanon, PA

717-949-2000 or 1-800-363-2767

HEAVY DUTY & LIGHT TRUCK CENTER

1995 FORD F250
SUPERCAB 4X4
Power Stroke Diesel,
XLT Trim, Low Miles



1997 Chevy G3500 XT, LS, 15 Pass, 5700 Vortec, AT/OD, Dual A/C & Heat, Privacy Glass, Tilt, Cruise, PW, PL, 10K Mi, #2716

2 Available



1997 Ford E350 XLT, 15 Pass, 6.8 Triton V10, AT/OD, Dual A/C & Heat, Privacy Glass, Tilt, Cruise, PW/PL, Cassette, Power Seat, Power Mirrors, 29K Mi #2703



1995 Ford E150 XLT, 8 Pass., 302 V8, AT/OD, Dual A/C & heat, Privacy Glass, Tilt, Cruise, PW/PL, 57K Mi.



1998 & 1997 Ford E250 Cargo, 5.4 Triton V8, AT/OD, A/C, 8,600 GVW, Racks & Bins, 14K & 20K Mi.

4 Available



1997 Ford E350 Hi-Cube, 5.4 Triton V8, AT/OD, 10,700 GVW, PS, PB, 14' Supreme Body, 26K Mi #2714



1997 Ford E150 XLT, 8 Pass. Triton V8, AT/OD, Dual A/C Heat, PW, PL, Tilt, Cruise, Privacy Glass, 26K-29K Mi \$18,200



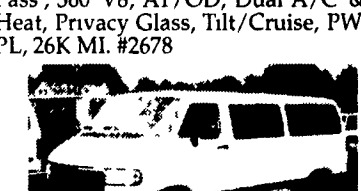
1996 Ford E150 XLT, 8 Pass., 351 V8, AT/OD, Dual A/C & Heat, Privacy Glass, Tilt, Cruise, PW/PL, Cassette, Black, 43K #2706



1997 Dodge B3500 Maxi SLT, 15 Pass., 360 V8, AT/OD, Dual A/C & Heat, Privacy Glass, Tilt/Cruise, PW, PL, 26K MI. #2678



1997 Ford E350 XLT, 12 Pass 6.8 Triton V10, AT/OD, Dual A/C & Heat, Privacy Glass, Tilt, Cruise, PW, PL, Towing Package, 17K Mi #2705 Also, 1996 19K, 351 Avail



1997 Dodge B2500 SLT, 8 Pass., 318, AT/OD, Dual A/C & Heat, Privacy Glass, Tilt, Cruise, PW, PL, 26K Mi. #2681

Specializing In Vans
30/40/45/48
Four Way

Auto Sales

770 W Main New Holland PA 17557
717 354 3199 • 717-355 0625 FAX

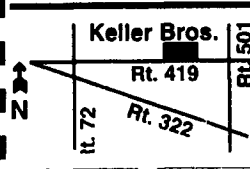
Toll Free 1-888-847-8029

Many Other Vans In Stock



97 Ford E350 Super 5.4 Triton V8, AT/OD, Dual AC & Heat, Privacy Glass, Tilt, Cruise, PW, PL, Wheelchair Van, Lowered Floor, Raised Roof, Ricon Wheel Chair Lift & Power Swing Doors 718 Mi #2720

<p>1988 BMW 325 IX AWD, Coupe, 5-Spd., Sunroof JUST TRADED</p>	<p>(2) 1997 FORD F350 STAKE BODIES Power Stroke Diesel, 4x4 AT, A/C, 6 Speed, Dual Rear Wheels, XLT Trim</p>	<p>1990 GEO TRACKER 4X4 AT, Cassette, Local Trade \$5,995</p>	<p>1994 FORD RANGER Supercab, 4x4, 4.0, 5-Spd, Loaded, Very Clean</p>
<p>1997 NISSAN 4X4 SUPER CAB 5 Speed, AC, Cass., 9,400 Miles, Bal. Factory Warranty, Red</p>	<p>1995 FORD F150 SUPERCAB XLT 4x2, AT, V8, Nice Truck</p>	<p>1993 JEEP CHEROKEE SPORT AT, 4 Dr, Black</p>	<p>1999 FORD F550 DUMP TRUCK Power Stroke Diesel, 4x4, AT, A/C, 12 Ft. Dump Box</p>
<p>1998 FORD RANGER SUPERCAB 4X4 XLT, 4L, AT, 5,000 Miles</p>	<p>WINDSTARS 2 - 1996 w/Quad Captains Seats 2 - Used 1998s</p>	<p>99 FORD F-350 CREW CAB 4X4 DIESEL Chassis Cab JUST ARRIVED</p>	<p>1995 FORD EXPLORER XLT 4-Door, Leather, Moonroof, Low Miles</p>
<p>87 E150 FORD CONV. VAN High Top - Runs & Drives Great. \$5,995 Special \$5,150</p>	<p>1989 FORD BRONCO II XLT, 4x4, 5-Spd., Red/Silver</p>	<p>JUST ARRIVED 1994 FORD EXPLORER XLT 4X4, V6, AT, A/C, PW, PL, One Owner, Clean</p>	<p>1996 GMC JIMMY 4-Dr, Black, Loaded, SLE, Pkg. Alum. Wheels</p>
<p>1997 FORD F250 XL, AT, V8, A/C, 13,000 Miles</p>	<p>1993 FORD F250 SUPER CAB 4X4 XLT, Diesel, White, Loaded</p>	<p>1988 CHEVY S10 SUPER CAB 4x4, AT, Sport, Low Miles</p>	<p>86 F350 DUALY XL, Diesel, AT, A/C, Very Clean</p>



KELLER BROS. FORD HAS SERVED CENTRAL PENNA. AREA FOR MORE THAN 75 YEARS.

FORD FORD FORD FORD FORD FORD FORD