

Phila. Fruit Market
PHILADELPHIA Terminal

Prices as of 05-AUG-98
Provided by: Fruit and Vegetable Market News, Federal-State Market News Service, USDA.

Phone: (215) 597-4536 Fax: (215) 336-0355

Partly Cloudy 65-90
NA-FV010

CITRUS FRUITS ---GRAPEFRUIT: MARKET STEADY ctns CA Ruby Red 23s fr qual 11.00-12.00 27s 14.00 fr qual 11.00-12.00 32s 13.00 36s 13.00 40s 13.00-14.00 ---LEMONS: MARKET ABOUT STEADY ctns CA 95s 36.00 fr qual 24.00 ord qual 20.00 115s 38.00 fr qual 25.00 ord qual 20.00 140s 37.00 fr qual 26.00-28.00 ord qual 20.00 165s 37.00 fr qual 29.00 ord qual 20.00 15 kg ctns SP BOAT 100s 17.00 120s 17.00 140s 16.00-17.00 160s 14.00 ---LIMES: MARKET STEADY 10 lb ctns FL 42s 5.50 48s 4.50-5.00 54s 4.50-5.00 MX 48s 3.50-4.50 54s 3.50-4.50 ---MISC CITRUS: NO SALES REPORTED ---ORANGES: MARKET ABOUT STEADY ctns CA Valencia 56s 20.00 fr qual 12.00-13.00 72s 18.50-19.00 fr qual 12.00-13.00 88s 12.00-15.00 fr qual 11.50-13.00 113s 13.00 fr qual 12.00-12.50 ---TANGELOS: OFFERINGS NONE ---TANGERINES: OFFERINGS NONE ---TEMPLES: OFFERINGS NONE

BERRIES ---BLUEBERRIES: MARKET LOWER flts 12 1-pt cups with lids NJ med 11.00-12.00 mostly 11.00 ---

CRANBERRIES: OFFERINGS NONE ---**MISC BERRIES:** flts 12 1-pt cups NJ Blackberries 22.00-24.00 flts 12 6-oz cups with lids CA Blackberries 18.00 ---**RASPBERRIES:** OFFERINGS LIGHT flts 12 6-oz cups with lids CA Red 18.00 ---**STRAWBERRIES:** MARKET LOWER flts 12 1-pt bkts CA med-lge 7.00-9.50 mostly 8.00 one label 12.00-13.00 poor cond 1.00

MELONS ---CANTALOUPS: MARKET ABOUT STEADY 1/2 ctns/crts CA 9s 7.50-9.00 mostly 8.00 some 7.00 12s 8.00-10.00 mostly 9.00 some 7.50 15s 8.00-10.00 mostly 8.00-9.00 some 7.50 18s 9.00-10.00 mostly 9.00 bins MD per bin 100 count 75.00 ---**HONEYDEWS:** MARKET LOWER 2/3 ctns CA 5s 8.00-9.50 mostly 8.00-9.00 some 11.50 6s 10.00-11.00 some 8.00 few 11.50 ---**MISC MELONS:** 2/3 ctns AZ Casaba 5s 10.00 6s 10.00 Juan Canary 5s 11.00 CA Juan Canary 5s 10.00-11.00 6s 10.00 Santa Claus 5s 11.00 ---**WATERMELONS:** MARKET LOWER bins per melon MD Sangria 20-22 lb 2.00-2.50 24-28 lb 2.00-2.50 VA Sangria 18-20 lb 2.25-2.50 mostly 2.50 22-24 lb 2.50-3.00

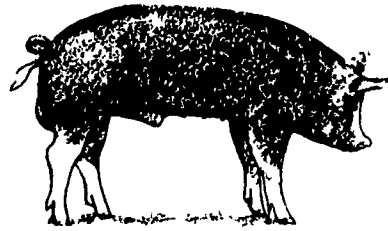
NON-CITRUS FRUITS ---APPLES: MARKET STEADY ctns trypk CL BOAT Granny Smith 90s 20.00 Fuji 64s 24.00 CONTROLLED ATMOSPHERE STORAGE ctns trypk NY U.S. ExFcy Empire 100s 20.00 U.S. Fey Red Rome 100s 14.00 WA WExFcy Red Delicious 72s 12.50-13.50 80s 12.50-13.50 88s 12.50-13.50 mostly 13.00 one label 24.00 100s 12.50-13.50 mostly 13.00

one label 19.00 Golden Delicious 88s 20.00-22.00 100s 21.00 WAFcy Red Delicious 64s 10.00-12.00 72s 10.00-12.00 88s 10.00-12.00 ctns celpk NY U.S. ExFcy McIntosh 100s 15.00 Idared 120s 15.00 U.S. Fcy Red Rome 100s 14.00 Idared 100s 12.00 ---**APRICOTS:** OFFERINGS INSUFFICIENT TO QUOTE ---**AVOCADOS:** MARKET FL LOWER, CA ABOUT STEADY. ctns 2 lyr CA Hass 48s 39.00-41.00 mostly 40.00 ctns 1 lyr FL Various Greenskin Varieties 6s 7.50 7s 7.50 8s 7.50 9s 7.50 10s 7.00-7.50 12s 7.00 14s 7.00 ---**BANANAS:** MARKET STEADY 40 lb ctns IMPORT 11.00 fair qual 8.50-9.50 sml 6.50-7.00 40 lb ctns bagged IMPORT 11.00 ctns institutional pk IMPORT petite 13.00

---**CHERRIES:** MARKET STEADY 20 lb ctns/lugs WA WAOne Bing 11 row sz & lgr 35.00 Lambert 10 1/2 row sz & lgr ord-fr cond 10.00-20.00 11 1/2 row sz & lgr ord-fr cond 10.00-18.00 12 row sz & lgr ord-fr cond 10.00-15.00 Rainier no sz mkd fr cond 15.00 Lapin 9 1/2 row sz 42.00 10 1/2 row sz 40.00 ---**FRUITS OTHER:** ctns 1 lyr FL Carambola - Star Fruit 16s 30.00 20s 30.00 25s 30.00 30s 30.00 ---**GRAPES:** MARKET ABOUT STEADY NEW CROP 21 lb hugs CA Perlette med 20.00-22.00 Flame Seedless med 18.00-20.00 mostly 19.00 Red Globe lge 22.00 19 lb hugs bgd CA Perlette med 18.00-20.00 Thompson Seedless med-lge 20.00-21.00 med 17.00-18.00 Flame Seedless med-lge 16.00-18.00 mostly 16.00

med 14.00-15.00 Fantasy med-lge 22.00 ---**KIWIFRUIT:** MARKET STEADY flts 1 lyr NZ BOAT 39s 7.00 ctns 22 lb lse CL BOAT 33 sz 15.00 ---**MANGOES:** MARKET KENT LOWER, OTHERS ABOUT STEADY. ctns 1 lyr MX Kent 8s 3.50-4.00 10s 3.50-4.00 mostly 3.50 some 3.00 fr cond 2.50 12s 3.00-3.50 fr cond 2.50 Tommy Atkins 9s 5.00 fr cond 3.00 10s 5.00 fr cond 3.00 12s 5.00 14s 4.50 ---**NECTARINES:** MARKET ABOUT STEADY ctns 2 lyr trypk CA California Well Matured Summer Grand 48s fr cond 6.00-7.00 25 lb ctns lse CA California Well Matured Summer Grand 56 sz fr appearance 8.00-10.00 64 sz fr appearance 8.00-10.00 Summer Brite 50 series 18.00-20.00 mostly 18.00 60 series 16.00 Summer Fire 64 sz fr appearance 10.00 ---**PAPAYA:** 10 lb ctns HI AIR 10s 14.00 11s 14.00 12s 14.00 37 lb ctns MX Yellow Flesh 21.00 40 lb ctns FL Green Cooking Type 20.00 ---**PEACHES:** MARKET STEADY ctns 1 lyr trypk CA California Well Matured Various White Flesh Varieties 21s 11.00 ctns 2 lyr trypk CA California Well Matured Elegant Lady 36s 14.00 42s 12.00 25 lb ctns CA California Well Matured Elegant Lady 56 sz 5.00 64 sz 5.00 Summer Lady 56 sz 5.00 64 sz 5.00 ---**PEARS:** MARKET STEADY 36 lb ctns CA U.S. One Bartlett 110s 23.00 40 lb boxes AG BOAT Packham Triumph 70s 18.00 80s 18.00 90s 18.00 110s 18.00 ---**PERSIMMONS:** OFFERINGS NONE ---**PINEAPPLES:** MARKET STEADY ctns

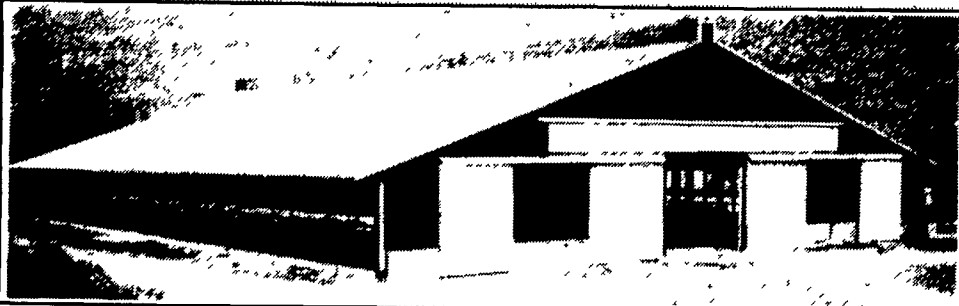
1 lyr HI AIR 6s 12.50 ctns 2 lyr CR 12s 16.00 ---**PLANTAINS:** MARKET STEADY 50 lb ctns CB Green 16.00 Yellow 16.00 CR Yellow 15.00 EC Green 14.00 ---**PLUMS:** MARKET STEADY 28 lb ctns lse CA California Well Matured Friar 30 series 20.00-24.00 mostly 22.00-24.00 40 series 18.00-22.00 mostly 20.00 some 17.00 60 series 16.00-18.00 some loas 11.00 50 sz 14.00-18.00 some 19.00 few 13.00 Laroda 30 sz 19.00-22.00 Simka 30 sz 19.00-22.00 40 sz 17.00-19.00 mostly 18.00 50 sz 12.00-17.00 mostly 12.00-14.00 some 18.00 fr cond 8.00 60 sz 10.00-15.00 some 17.00 Fortune 50 sz fr cond 10.00 60 sz fr cond 8.00 California Utility Friar 40 series 8.00-12.00 60 series 8.00-9.00 70 series 8.00-9.00 50 sz 8.00-9.00 Simka 40 sz 12.00 Catalina 40 sz 12.00 Fortune 40 sz 12.00 ---**POMEGRANATES:** OFFERINGS NONE



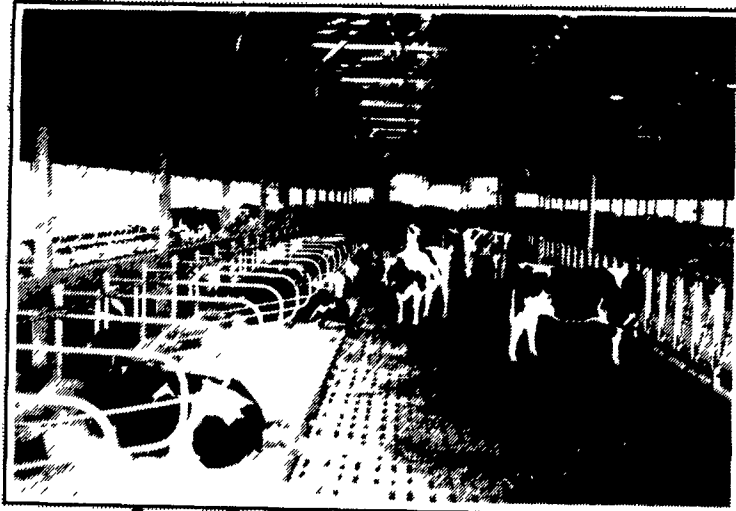
KEYSTONE CONCRETE PRODUCTS INC.

477 East Farmersville Rd.
New Holland, PA 17557
(717) 355-2361

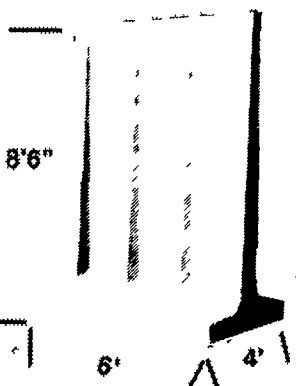
"WAFFLE SLAT"
Sm Con Corporation



Concrete Slatted Free Stall Barn



Long Core Cattle Waffle Slats

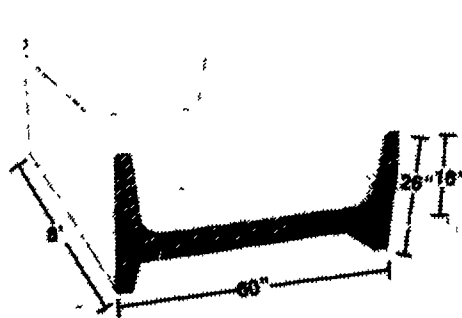


Outside T-Wall Bunker Silo Sections

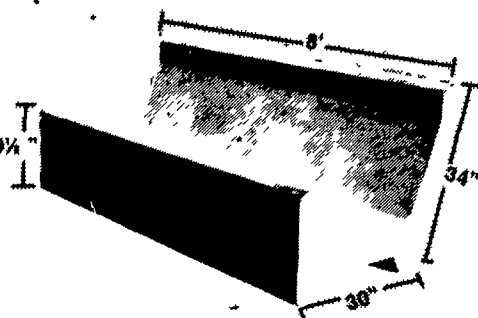
12 Ft. High Wall Available For Outside Or Center Divider



Slatted Beef Barn



Hi-Capacity H-Bunks



Slant Back J-Bunks

End Sections Available For Feed Bunks

Give us a call for more information on hog, beef, dairy and helper barns.



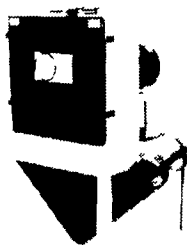
automatic farm systems

608 E. Evergreen Road, Lebanon, PA 17042
Phone: 717-274-5333

HAMMER MILLS for Grinding High Moisture & Dry Grains



Grinds Finer than Roller Mills.

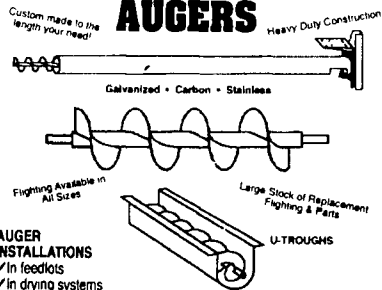


FEED BINS



Expert Installation

CUSTOM MADE AUGERS



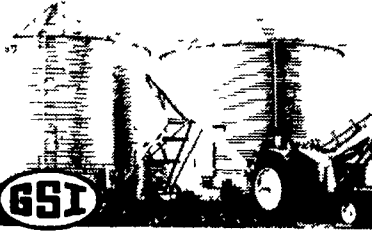
AUGER INSTALLATIONS
✓ In feedlots
✓ In drying systems
✓ Commercial applications
✓ At feedmills or elevators
✓ Around poultry & dairy barns
✓ At your grain bins or bulk tanks
✓ Replacement Augers for feed mixers and farm equipment

Standard Auger Specifications

	4"	6"	8"	10"
Tube Gauge	16	14	14	12
Flight Thickness	3/16"	3/16"	3/16"	1/4"
Bu./hr	250	850	2000	3000
RPM	431	431	431	431

Call Us For Custom Specifications

ON FARM STORAGE FOR MAXIMUM PROFITS



- FARM BINS
 - GALVANIZED FANS AND HEATERS
 - TOP DRY SYSTEMS
 - GRAIN DRYERS
 - HOPPER BOTTOM TANKS
 - COMMERCIAL FLAT BOTTOM
 - FLEX-FLO FEED SYSTEMS
 - SAFETY ACCESS EQUIPMENT
- We Supply Expert Installation and Service
Check Our Prices Before You Buy

See us at
PA AG PROGRESS DAYS
August 18, 19 & 20
on East 3rd Street

WE CUSTOM MANUFACTURE.

Painted, Galvanized and Stainless Steel Fabrication, Feed Bins, Feeders, Hoppers, Covers, Dump Pits, Augers, and Control Systems to Automate Your Operation.