

MAILBOX MARKET FOR SALE

International manure spreader, PTO driven, new wood, new web, 5'x10', \$750; perfect for horse farm. 610-593-6968 Lanc. Co.

Mixed first cutting hay, approx. 200 bales, not for horses, good for cattle, no rain. Dusty, after 5:30 pm, 717-336-3103 Lanc. Co.

Henry Lapp Amish dutch cupboard, all orig. incl. surface, candle drawers, blue interior, great feet & top. 717-396-7723 Lanc. Co.

NH 275 baler, \$1000; hyd. hog trailer, \$600. 717-653-5536 Lanc. Co.

Myer's forage wagon, 16' box w/4 beaters, and 12 ton tandem running gears, very good cond. 717-653-4757 Lanc. Co.

Horses, appaloosa gelding, \$850; Sorrel mare, \$600; 14' Glastron Runabout, 70 hp Evenrude, 1941 Willys MB Army Jeep, \$900. 717-933-6498 York Co.

2 nubian goats, 3 mos. old, 1 male, 1 female. 717-847-1061 Leb. Co.

Diesel motor for 4020 Cat; rear wheel weights for 2630 and front slabs; full line of parts for JD7700. 717-437-9080 Montour Co.

Press brake, will bend 3/16 PL, 6' wide, 1,500 hyd. rod bender, and angle, 1,000 gas welder. 717-369-4388 Frankl Co.

Taylor Dunn elec. cart w/charger, good for warehouse or farm use, \$750. 610-269-6777 Chester Co.

3 Farnall IIA tractors, 2 w/hyd., 1 w/5 Woods mower, also David Bradley w/6 implements. Mornings, 717-838-4671 Leb. Co.

Case model 310 tractor, w/front mounted blade, w/hyd., good tin, runs good, very rare model, \$1500. 717-834-3882 Perry Co.

Rubber suction hose, 1-1/2"x25'; new \$15 ea.; 308-3/4 welding rods, \$6/6 lb. can; Fiberglass, 1 pc. seats, \$2 ea.; fireproof file, 4 dr., \$75. 814-447-3490 Hunt. Co.

Barley and rye straw bales, \$1 ea.; buck saw w/28 inc blade, \$75. 717-896-8439 Dau. Co.

1947 Cushman motor scooter w/2-spd. transmission. Stored many years, needs restoration, \$495. 610-689-8544 Berks Co.

JD 620 NP, 3 pt. straight tin, good cond., Int 550 manure spreader w/endgate, heavy duty web works 500. 717-445-0319 Lanc. Co.

Hotpoint automatic electric stove w/well and drawers; canning jars, pints and qts 610-863-4019 Northampton Co

Tunis ram, reg., 3 yr. old, good color & type, \$150, also Heffner Suffolk yearling ram. 717-364-5812 Bradford Co.

Clean Oats. 717-566-0329 Dauphin Co.

225 Int. hay swather, self-propelled, new guards, 3 knife sections, \$900. 717-382-4624 York Co.

JD 35 harvester, 2 RN, 5' hay head, \$1600; 2 gravity flow bin wagons, 10 ton gear, good cond., \$1000 ea. 610-593-6538 Chester Co.

Border Collies, (reg.) males, 16 mos. \$100; 9 mos., \$125; 8 wks. male, \$175; female, \$200; also Pygmy Goats, \$45. 717-358-3177 Bradford Co.

Wheat straw, 3'x3'x8' bales, 95 per ton, also gm. silage in 6' Ag Bag. 610-589-2716 Leb. Co.

Pedigreed Holland Lop and Netherland Dwarf rabbits, 12-16 wks. old, \$20 ea. 610-987-6674 Berks Co.

Scottish terrier pups, \$200, males, females, great pets or breeders, mother and grandmother noted for big litters, shots. 717-922-1038 Union Co.

Low profile 18' flatbed trailer, new lights and braking system, 6500# GVW, asking \$1450. 717-432-4841 York Co.

4 bale elevators, alum. storm windows, disc harrow, AC 3-bottom mounted plow, 2 AC cults 717-589-3540 Perry Co.

Barn foundation building, stone, \$40/ton; loader available; 2 fiberglass garage doors 12'x12', \$200 ea., Honda 4 wheeler, \$2000. 717-865-7447 Leb. Co.

20' feeder wagon w/8-ton Zimmerman gear, good shape, \$600; 3024" barn fans, \$40 ea., good cond. 717-789-3247 Perry Co.

Mobile home, double wide, 28'x78', 5 yrs. old, exc. cond., 4BR, 2 Ba., laundry, \$36,000, to be removed from property 717-786-1466 Lanc. Co.

30 ft. steel dump trailer, holds grain, \$300, 725 New Idea 3row harrow, 30" Snapper head, \$400. 717-867-2995 Leb. Co.

Ferguson 30, new motor in 1993, completely rebuilt, tires exc., garage kept, blade, lift, chains incl., \$3200 OBO. 717-463-3415 Jun. Co.

Side cultivators for JD 40 in good cond, repainted w/orig. JD operator's manual, \$200. 717-657-3056 Dau. Co.

Lots of old car, truck, shop and owners manuals, sales brochures also, old toy cars and trucks 717-545-9289 Dau. Co.

4' exhaust fan, 30,000 cfm, one lg. set of cutting torch tanks. Sylvan Esch, 1120 Dyrwells Rd., Quarryville, Pa. 17566 Lanc Co

Timothy hay, 4x4 round bales, net wrapped, stored inside w/excellent color, \$25 ea. Also mulch hay and straw. 301-371-6238 Fred. Co.

11 New Zealand white bunnies, 28 Silkie chicks, all colors, nice Chris Martin, 455 Linden Rd., East Earl, PA 17519 Lanc. Co.

Free to good home, AKC reg. 4 yr. old white dalmatian, good outside dog, also good watch dog. Tracy, 610-589-5739 Leb. Co.

Amish carriage, brand new paint, completely overhauled, \$3300. 215 Horsehoe Rd., Leola, PA 17540 Lanc. Co.

D-19 AC diesel tractor, runs good, WF, 3 pt. hitch, 6' rotary mower, \$175 717-536-3786 Perry Co.

17 crossbred feeder pigs, shots, wormed, castrated, \$30 ea., take 2 or all 610-767-4735 Lehigh Co.

230 Oswalt TMR mixer wagon w/scales, \$5500, Gehl 99 blower, \$350; IH 400 4RW planter, \$300. 717-998-8163 Lyc. Co.

1972 Chevy p/u, new radiator, heater core, bumper, tires, good exhaust, 3/4 ton, 400 SB body, good, \$1800. 908-429-4176 Somerset Co., NJ

NH hayliner 68 baler, \$500, hayrake, pulley type, \$200, purebred Angus cow, \$1200; and heifer \$1500 serviced. 717-255-1739 York Co.

1964 Cub Farnall has hyd lights, \$2100 firm After 6 pm, 717-382-4731 York Co.

Antique brass steam whistle, 16"L, 4-1/2" dia. m Lunkenhe lmer 4/200, asking \$450, also JD grain-binder, needs restoration, \$200 814-322-1295 Cambria Co.

Donkeys, Janet w/Jack at side, exc mother, silver gray foal is well handled, shots wormed, \$600 OBO. 717-244-0131 York Co.

Lancaster Farming, Saturday, August 1, 1998-B21

Front end loader for JD 430 lawn & garden tractor, 54" bucket, exc cond. \$1500 717-367-6637 Lanc. Co.

1 peacock, 1 yr. old, asking \$30 Lv. mssg 717-365-3920 Dauphin Co

2 steel beam, 18' long, 15" wide, \$125 OBO. Wanted: garage door, 10" high, 12" Paul Hoover, 246 Kurtz Rd., Ephrata 17522 Lanc Co.

Goodyear 10-24, 4-ply, 75% tread, \$50 for pair. Call 717-266-4361 York Co.

2.2 acre rural wooded lot, zoned residential, adjoins paved road, 1 mile from Beltzville State Park and Dam. 610-377-6550 Carbon Co.

Circle grain bin, 16,000 bushel bin, \$3000 717-784-5255 Col Co

Low pro Chev weld bilt roll back, \$7500, GV53 DSL motor w/4 sp auto, \$1000, 550 Oliver, \$4000 518-692-7930 Wash Co

Approx. 15,000 ft. of walnut lumber, various widths, lengths, and thickness, log run, make offer Hog farrowing crates 717-359-7584 Adams Co.

Trappers pack basket, \$15; 1/3 hp motors, \$7/ea., 22 Marlin stainless w/3x9 scope, \$170, like new 717-927-8359 York Co.

4 pygmy goats grannies, 406 months old, \$50 ea., pony cart wire rubber wheels, \$75, Harness, \$75 717-336-7273

1974 Liberty mobile home, 12x56, must be moved, for property settlement Paul Brennemen, 717-872-5516 (make offer) Lanc. Co.

Case 485 diesel tractor, 1300 hrs., like new, 42 hp, BO; tilt bed trailer, 4x10, all steel, new paint. 717-252-1182

Lg Cedar trees for boards, make offer. 717-336-5027 Lanc. Co.

Alfalfa high quality from Colorado, 22 ton loads or delivered, \$200, or per ton, protein 20 to 24% R F V 160-190. 814-472-7038 Cambria Co

Safe file cabinet and walk-in vault door, all fireproof, can deliver 717-845-2350 York Co

1966 396 Chevy big block, redone, Manley valves & springs, TRW pistons, steel crank roller rockers, balanced w/clutch, \$3000 908-429-4176 Somerset Co

1978 Ford F350 dump truck for parts, good motor, trans., dump, \$500 717-442-8239 Lanc Co

New Idea 323 corn picker, NH 268 baler, E-Z flow forage wagon, Gehl 315 Scavenger II manure spreader. 717-483-6605 Mifflin Co

John Deere backhoe buckets, 12" through 36", pens and cages, many sizes, some w/ss wire 215-343-6365 Bucks Co.

10' offset dis, Taylorway, 10' disc harrow, IHC 843 IHC corn head, Farnall superarm, 150 bushel bin, selling everything. 717-805-7703 Perry Co

John Deere 620 disk, 3,500 brilliant chisel plow, 1,000. 610-682-7075 Berks Co.

Ferguson 2-bottom plow, 5' bushog, like new, 1968 F-100 pickup, new 1968 F-100 pickup, good cond., Vermont woodstove 717-369-4559 Frankl Co

AKC German Shorthair Pointer puppies, champion lines, shots, wormed, dam sire on premises, \$200 610-926-1648 Berks Co

4" alum pipe, all connectors PTO hale 500 gal. minute pump 175 bushel grain wagon 215-794-7381 Bucks Co.

79 Int. Scout Traveler, 2 tops diesel auto, good tires, can pass insp. or for parts, \$500/offer 717-938-6318 York Co

Liquid rubber 5 gal pails, makes seamless roofing supplies w/roller brush trowel, waterproof almost anything, every pickup beds 610-767-6065 Lehigh Co

Bolens H1502 diesel, hydro, 48" deck, Cat-1, 3 pt 410 hrs., like new, \$5200, can deliver, lv mssg 610-377-8676 Carbon Co

544B wheel loader, 4-way bucket, good cond, \$18350, 555B Ford backhoe w/ext hoe cab, low hrs., no 5 JD sickle bar 717-359-8283 Adams Co

YES!



Hot Water Outdoor Wood Furnace Hot Air
ROSEBERRY STOVES
(717) 532-9023

Black Rock
Repair

Manufacturer of Farm Sprayers
Sprayer Parts and Repair
• Pressure Washers • Hydraulic Hoses
• Black Walnut Cracker

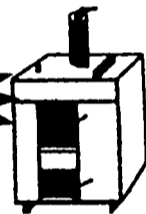
858 Pumping Station Road Answering Service
Kirkwood PA 17536 717-529-6553

Mahoning Outdoor Furnaces

Cut Your Heating Costs With Our Outdoor Furnace

- Standard Model Burns Wood, Coal or Wood by-products
- Multi-Fuel Model Burns Wood, Coal, Oil or Gas
- Corning Catalytic Combustor Option Available on all Models

STOP BY TO SEE US AT AG PROGRESS



Clyde K. Alderfer
Box 246, RD #1
Mt. Pleasant Mills, PA 17853
(717) 539-8456

Adapts to any existing heat system
Installation & Accessories Available

95' White Star IV



This Year We Have Completely Rebuilt This Vessel, Inside & Out, For Your Added Comfort
New Engines 2000 H.P. Installed Less Riding Time, More Fishing Time. All The Ice needed to Keep Your Catch Fresh Free of Charge

OPEN BOAT
APRIL THRU NOV.
DAILY 7:30 AM - 4:00 PM

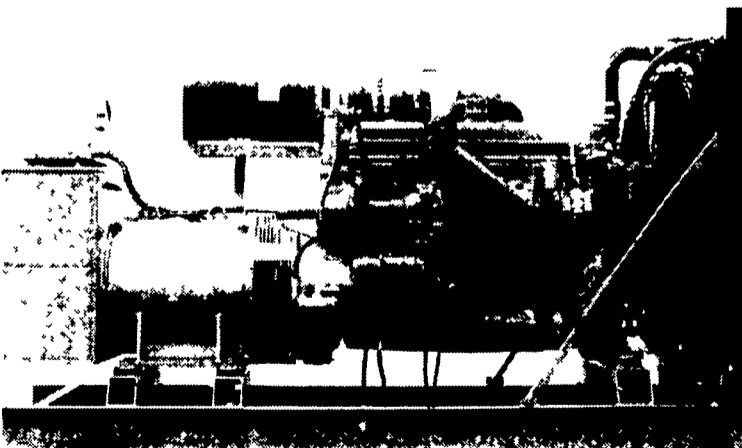
CAPT. FROST
CAPT. RAY ETEL
609-494-0425
609-494-1462
16th and Bayview
Barnegat Light N.J.

★ Come Join Us We Offer A Daily Raffle For Our Patrons Free Of Charge

Now Is The Time To Book Your Date For Jumbo Blues, Sea Bass, Flounder or Mackerel Fishing

★ ★ ★
Special Small Group Charters for Night Blue Fishing Mon.-Fri.

GENERATORS



MARTIN ELECTRIC PLANTS • Manufacturer of:
DIESEL, LP GAS, NATURAL GAS, PTO
Automatic & Manual Start Systems
USED UNITS ALSO AVAILABLE

Call Us For All Your Generator Needs!

MARTIN ELECTRIC PLANTS

280 Pleasant Valley Rd., Ephrata, PA 17522-8620

800-713-7968

Tel: 717-733-7968 Fax: 717-733-1981

SAVE \$ Free Catalog

Quality Product

Forage Knives

Barn Fans

Trailer Hitches

740

Cushion Hitches

Weaver Distributing
1-800-Weaver D
1-800-922-8373
Fax
1-800-Fax to WD
1-800-329-8693
212 Fredericksburg, PA 17026