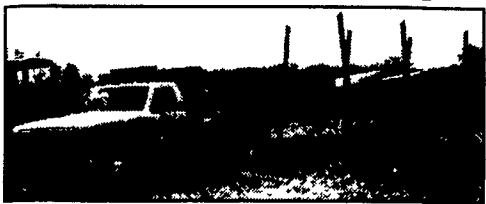


**FOR SALE**



**1984 Hale Gooseneck Flatbed**  
36' Floor, 8' Deck, 7 50-16 Tires, 8,000 GVW  
Bad Wood on Floor  
**ASKING \$1,100.**

**1985 F350 1 Ton Flat Bed**  
4 Sp. Bad Engine  
**ASKING \$900.**

**BOTH TRUCK & TRAILER CASH ONLY \$1,500.**

Call 800/783-7867 ext. #15  
or after 6 p.m. 717/456-7497 Ask For Nick



**1972 Ford F800 Truck**  
V-8 Gas, 5+2, Air Brakes, 20' Flat Bed w/Oak  
Floor and National Knuckle Boom - Only  
46,180 Miles. **\$10,200**

Gerhart Equipment Co., Inc.  
910 Brunnerville Rd., Lititz, PA 17543  
**717-626-8544**

**35 TRUCKS & TRAILERS**

OVER 60 YEARS IN BUSINESS!

**WOLF MOTOR CO.**

ROUTES 72 & 283, LANCASTER, PA 17601

**CENTRAL PA'S**

**FORD TRUCK DEALER**

Sales Reps. Charlie Burke, Gary Brenneman,  
Dennis Asel, Mgr

**717-299-4331**

**Toll Free 800-637-6612**



**95 Ford E150 Cargo Van**  
V-8 Auto AC, AM/FM, Work  
Bns. 54,000 Miles **\$12,900**



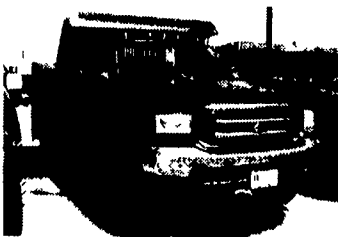
**91 FORD E250**  
Cargo Van 8 550 GVW V 8 Auto  
83 000 Miles **\$6,900**



**94 International 4700**  
25,500 GVW, 24 Van Body, Lift  
Gate, AT 408 Eng., 5 Speed  
**\$21,500**



**1999 FORD F800**  
26 000 GVW 10 Dump  
190 HP Diesel Auto  
**\$42,400**



**1999 FORD F450 4x4**  
Power Stroke Diesel, Auto,  
9' Dump Body w/Tarp  
**\$38,953**



**85 MACK R686**  
Tandem Tractor  
**\$9,900**

**ARMY TRUCK PARTS**

CHAMBERSBURG, PA

COMPLETE TRUCK INVENTORY  
COMPLETE PARTS INVENTORY  
THE NATION'S LARGEST ARMY  
TRUCK AND PARTS DEALER



**6x6 TRUCKS**  
**2 1/2 & 5 TON**  
**UNITS AVAILABLE**  
**ENGINES**  
**TRANSMISSIONS**  
**TRANSFER CASES**  
**DRIVE TRAIN**  
**CAB KITS**

Army truck parts catalogs available

**MEMPHIS EQUIPMENT**

821 Lincoln Way West  
P.O. Box M  
Chambersburg, PA 17201

**717/263-4194 FAX 717/263-4555**



GLENN ALLEMAN, GEN. MGR.  
MARK SIPES, PARTS MGR.



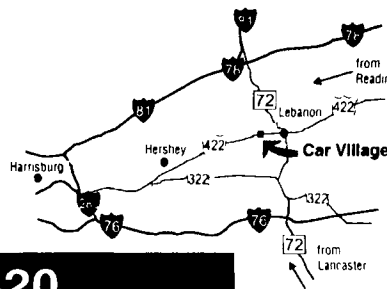
**Business Hours:**  
**Mon.-Fri. 9 to 9;**  
**Sat. 9-4**

RTE. 422 WEST  
LEBANON, PA

(Across From Lebanon  
Valley Mall)

**CAR VILLAGE**

**HEAVY DUTY TRUCKS**



**PHONE 717-274-2000 Toll Free 1-800-650-1420**



**460 POWERHOUSE 97 FORD HEAVY DUTY F250**  
4 Wheel Drive, 6 1/2 Ft. Bed, The Nicest  
Anywhere, Only 21,000 Miles f! 460 V8, Auto,  
You Must See



**5 SP. POWERHOUSE 97 DODGE 2500 4x4**  
Real Strong Cummins Turbo Diesel, H D 5 Sp.,  
A/C, Trailer Tow Pkg.



**5 SP 4X4 HEAVY DUTY FORD F250's**  
97 & 96 Available, Powerstroke Turbo Diesel,  
8600 GVW, Trailer Tow Pkg, 2 Real Workhorses,  
Come See



**4x4 Club Dually 93 Dodge LE**  
Power To Tow & Room For The Family, Very  
Clean, Only 45,000 Miles, Cummins Turbo  
Diesel, AT, A/C, Tow Pkg, Lock Out Hubs



**\$19,900**  
**96 CHEVY H D 3/4 TON, 4 WHEEL DRIVE**  
5 sp manual, high output, 6.5 turbo diesel, A/c  
trailer tow pkg limited slip 4 10 gears, only  
51,000 miles, remain new tk warranty



**1 TON DIESEL 4WD 95 FORD F350 XLT**  
Powerstroke turbo diesel, AF, A/C, Dual Tanks,  
Tow Pkg., Limited Slip 4:10 Gears



**ALUMINUM WALK IN 96 GRUMMAN**  
14 Ft. Aluminum Body, Only 14,000 Original  
Miles, Like new, V8, Auto, Only \$18,900  
Lots Less Than New



**DODGE CUMMINS**  
**2 WHEEL DRIVE**  
**TRAILER TOW SPECIALS**

**93 250 CLUB CAB, 5 SP.**  
**93 350 CLUB CAB DUALLY, 5 SP.**  
**92 250 REG. CAB, AUTO**

**Very Nice Low Mileage Trucks**



**4 WHEEL DRIVE**  
**94 CHEVY 4 DOOR DUALLY**  
Excellent Tow Machine, 5sp, High Output 6.5  
Turbo Diesel 4:10 gears, Gooseneck Hitch,  
Only 40,000 Miles, New Tk Warranty



**PERFECT SUPER CAB 95 CHEVY K2500 4x4**  
Must See This One, Only 23,000 Miles, High  
Output 6.5 Turbo Diesel, AT, A/C, Loaded,  
Silverado, Trailer Tow Pkg



**MECHANIC'S TRUCK 95 DODGE 3500**  
Omaha Utility Boxes, 360 Magnum, V8, Auto,  
Very Clean, 32,000 Miles, New Tk. Warr.  
**\$17,900**



**4x4 FLATBED 93 CHEVY K3500**  
Real Nice Tk. Only 19,000 Miles, 350, V8, 5 Sp.,  
Manual, Vinyl Seat & Floor, 9 Ft. Bed



**4x4 CHEVY, 93 CHEVY 2500**  
Heavy Duty 3/4 Ton, High Output 6.5 Turbo,  
Diesel, AT, A/C, Gooseneck &  
Class 3, Hitches, 65,000 Miles



**4 DOOR SHORTBED 97 FORD F250 XLT**  
4 Wheel Drive, Powerstroke, Auto, A/C, Tilt  
Cruise, Trailer Tow Pkg, Big Mirrors, 4-10 Gears,  
Only **\$23,900**



**BLACK BEAUTY 98 FORD 1 TON**  
4 Wheel Drive, Very Clean, 29,000 Miles,  
Powerstroke Turbo Diesel, AT, A/C, Solid Frt  
Axle, Trailer Tow Pkg.



**DIESEL CARGO VAN**  
**93 FORD EXTENDED LENGTH,**  
Nice, clean, ready to work, 7.3 diesel, auto, A/C,  
heavy 9400 GVW



**4x4 FLATBED 98 DODGE CLUB CAB**  
**DUALLY**  
4 Wheel Drive, Nice Tk., Only 52,000 Miles,  
Cummins, Turbo H A 5 Sp., A/C, Limited Slip  
4 10 Gears, A Beauty



**CENTURION CREW CAB DUALLY**  
**92 FORD F350 KLT**  
Good Lookin' Tow Machine, 7.3 Diesel, AT, A/C,  
Custom Paint, Very, Very Nice **\$18,900**



**CHEAP PRICE - GOOD TRUCK - 93 CHEVY**  
**K2500 4X4 SUPER CAB**  
6.5 Turbo Diesel, Auto, A/C, Trailer Tow Pkg,  
Capt. Chairs, Loaded Silverado, H D. 3/4 Ton  
**\$12,900**



**99 FORD SUPER DUTY**  
**4X4 POWER STROKE**  
**DIESEL**  
XLT, Auto, New Tk. Warranty,  
F350 Crew Cab Dually  
F350 Crew Cab Single  
F350 Quad Cab Shortbed



**FARM TRUCK 94 FORD F250 HEAVY DUTY 4X4**  
Nothing Fancy - Just Truck - Powershift Diesel,  
5 Sp., A/C, 4:10 Gears, 8600 GVW



**4X4 DUALLY 94 FORD F250 XLT SUPER**  
**CAB** Like new - Only 28,000 Miles Turbo 7.3  
Diesel, AT, A/C, Capt Chairs, Tow Pkg,  
Chrome Simulators, Mint Cond., **MUST SEE**



**4x4 CUMMINS TURBO DIESEL, DODGE**  
**2500 SLT LARAMIE**  
97 & 95 Available - Call For Details