

30' aluminum dump trailer, road ready, good condition, \$8,500. (717)532-7304.

73 IH Deisel, Single Axle Dump Truck. 10' Box. \$4,500/obo.; Case 580 Super E Backhoe, Cab. \$18,000. (717)433-4518.

'78 Ford cattle truck, good tires, \$2,500. Franklin County, (717)597-7295.

82 U-Model Mack Tractor, New Cab, 300E-6, 10spd.; 1976 DM Mack 10 Wheeler, Fixer-Upper PACKAGE DEAL! \$8,500 (Will Seperate) (717)548-3412.

85 Merrit Cattle Trailer-48'x102", 3 Floor Trailer, Currently Using 2 Floors. Good Condition. (717)738-3927.

87 Ford, 4-door Dually. Custom Seats, No Rust Lancaster County. 717-665-3836.

'88 GMC Flatbed, 1-1/2 tons, dually, automatic 350, AC. 717-786-7525

'89 Ford LN8000, 33,000 GVW, diesel, 6-speed, 18' refrigerated body, very good condition, \$13,000 '89 Hackney 18' cold plate refrigerated body, side door w/roll up rear door, very good condition, \$3000 OBO. 215-723-4606 Ask for Ron

'91 Eby aluminum 24' trailer, 8'Wx7 1/2' H, deck railing, vacuum brakes, \$9500. 717-649-6436

'91 Ford 250 XLT Lariat, 4x4, 7.3 diesel, automatic, AC, tilt, cruise, PW, PD, good condition, 115,000 miles, \$9750. 717-367-9298

'91 Hillsboro 24' flatbed gooseneck w/deckover, 14,000 GVW, dove flat combo, like new, \$5000 OBO. 717-354-2281

'92 Chevy G10 short whl. base van, 305 auto, PS, PB, air, AM-FM cassette, rally whls., new radials, 63,000 one owner miles, excellent condition, \$7,950. 717-733-2873

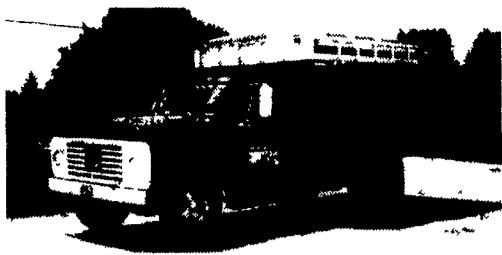
'92 Ford XL F150 super cab, 300 EFI, 5 spd, PS, PB, AM-FM, dual tanks, 50,000 one owner miles, burgundy, \$8,600. 717-733-2873

'93 Chevy S10 Tahoe extended cab, V6, 5 spd, PS, PB, AM-FM cassette, 39,000 one owner miles, excellent condition, \$7,950. 717-733-2873

'93 Dodge LE 150 Club Cab, 2WD, 360 auto, PS, PB, PW, PDL, cruise, tilt, air, AM-FM cassette, limited slip diff., charcoal & silver w/matching fiberglass cap, excellent condition, \$10,900. 717-733-2873

'93 F150 extended cab, custom 6 cylinder, 4 speed, good work truck, runs good, high miles, \$4,400. (610)353-1209.

In Remarkable Condition



Ford 500 1972

\$3,500

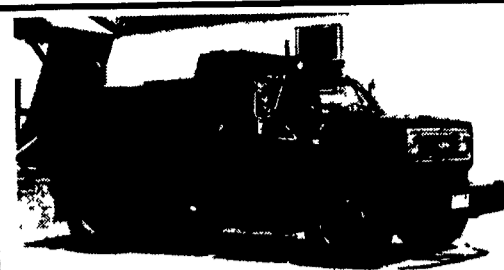
410-557-7871 Home

410-557-7554 Barn



1981 Chev. Truck, GVW 32,200, diesel, air brakes, good shape.

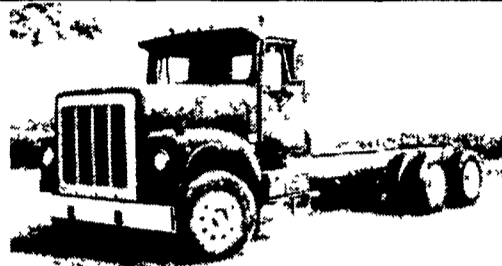
717/866-4601



1984 C70 Chevy

35,000 GVW, 5/2 spd., 8.2 Turbo, 1 owner, \$9800

717.264.7413



Int. 4200 Ten Wheeler, Cab & Chassis, 318 Detroit Engine, 13 Spd. Trans., Power Steering, GVW 56,000 PTO, Would Take 18 Ft. Dump Body, All In Very Good Condition

Asking \$4,500

717-786-1119 Evenings

AM GENERAL 6x6



In-Line 6-Cylinder Cummins, with Turbo 5 Speed with Hi and Lo Transfer case 900/20, Tires Air Brakes Locking differentials Cargo body A must for every farmer or off road work Some with new engines and transmissions.

Priced from \$2,900 to \$10,500.

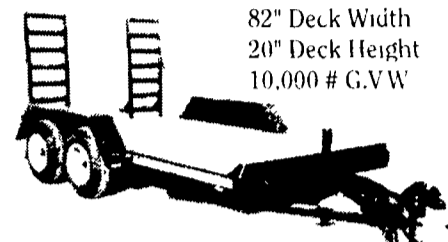
All Road Ready EXCELLENT CONDITION.

Call St. Marys, PA.

(814) 834-1018

BEST BUY ON THE MARKET

16 ft. \$2,595



82" Deck Width
20" Deck Height
10,000 # G.V.W

6" Channel Tongue and Main Frame Choice of 2 5/16" Coupler or Pintle Ring 7000# Drop Leg Jack Treated Yellow Pine Floor Stake Pockets fits standard 2x4's heavy Tie Rail with Reflective Tape

(14" - \$2,495) (18" - \$2,760) (20" - \$2,960)

Gooseneck - Add \$300

Hostetler Truck Bodies & Trailers

Phone: 717-667-3921

E.M. KUTZ, INC.

USED & NEW PLATFORM BODY BLOWOUT!!!

USED PLATFORM BODIES

- 22 Omaha H D Platform, wood floor, bulkhead & racks (2 yrs old) \$1,675
- 9 x96' Reading stake body with hoist \$1,275
- 12 x88 Omaha body with 18 racks, 40' bulkhead \$1,085
- 12'6"x96" Reading body with steel floor, 14' contractor s sides with 24" extension and hoist \$1,425

NEW PLATFORM BODIES

- Omaha 9'x96', wood floor \$1,035
- Omaha 12'x96', wood floor \$1,326
- Omaha 14'x96', wood floor \$1,529
- Omaha 16'x96', wood floor \$1,725
- Omaha 18'x96', wood floor \$1,922
- Omaha 20'x96', wood floor \$2,170
- Omaha 22'x96', wood floor \$2,377

Racks and Bulkheads Available All Items Unmounted

OTHER NEW EQUIPMENT BLOWOUTS!!

- 9 Heil steel dump body, 4/5 Yd., complete with cab shield and hoist with coal door \$3,030
- 10' Heil dump body for 1 ton truck with hoist \$1,750
- Good Roads power angle 10' plow with trip edge \$4,500
- Buyer's plastic pickup spreaders \$749
- Henderson gas engine mold steel pickup spreaders \$2,895
- New Ford F250 H D pickup bed (1999 yellow) \$895

Complete Inventory of Bodies, Plows, and Equipment

Call Today!!

E.M. Kutz, Inc.

(800) 974-9779

Now With Two Locations To Serve You

E.M. Kutz, Inc. E.M. Kutz, Inc.
2456 Morgantown Rd. 715 Front St.
Reading PA 19607 Whitehall PA 18052



LESHER Mack SALES & SERVICE

2700 Cumberland Sts. (Route 422 West) Lebanon, Pa 17042

LEASE IT!

1999 Isuzu NPR 14 Ft. Supreme Van Body. Call For Details Ask For Leasing Dept



NEED A SLEEPER OR DAYCAB?

Sleeper boxes can be removed - plenty to choose from 1994's - 1995's

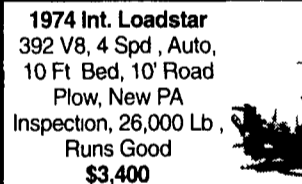


1993 Mack MS250 190 HP, 6 Spd, 217" WB, A/C, PS, Cab & Chassis, Rebuilt Trans with New Clutch

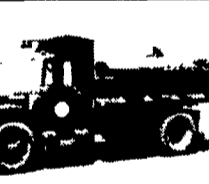
E7-350 RTLO14610B 10 Spds, DS404 - 3 90R on Air, Steel Disc Hub Pilot, 295/75R 22.5 192 WB, 42" Highrise, 400,000 Miles



1995 Parker Aluminum Dump O A Length 34ft, 3-Axle Air Ride, 11R22.5, Spoke \$26,500



1974 Int. Loadstar 392 V8, 4 Spd, Auto, 10 Ft Bed, 10' Road Plow, New PA Inspection, 26,000 Lb, Runs Good \$3,400



717-273-4535

NO NEED TO WAIT... WE'VE GOT GAS POWERED ISUZU'S RIGHT HERE!



98 NPR GAS DUMP
14,050 GVW, Auto, A/C, Cass Stereo, 10' Omaha Dump Body

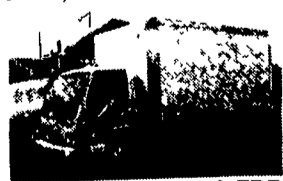


1998 NPR GAS VAN
14,050 GVW, Auto, A/C, Cass Stereo, 16' Morgan Van, Low Entry Side Door



98 NPR GAS & HD GAS
Chassis - 11050 & 14050 GVW; Auto, A/C, Cass, Stereo, Most Wheelbases Available

OH YEAH, WE HAVE DIESELS TOO!



98 & 99 NPR, NQR & FRR MODELS
In Stock, Stock or Auto, 12000-19500 GVW-Call for Yours

Berks, Lebanon & Schuylkill Counties **ONLY AUTHORIZED** Isuzu Dealer

TAKE ADVANTAGE OF OUR "0 DOWN" 5.9% LEASES ON ALL '98 'N' SERIES

ISUZU TRUCK OF READING

800-485-2556

4226 Pottsville Pike, Reading, PA

PRE-OWNED CARS

PRE-OWNED TRUCKS

PRE-OWNED MPV'S

'95 CADILLAC ELDORADO Loaded	'97 FORD F350 4X4 DRW Dump, 10 Box	'96 CHEVY BLAZER LS A/C, Auto AM/FM Cass Local Trade Sharp!
'96 FORD TAURUS GL A/C, A/OC, PDL, PW, AM/FM Cass. Power Seats, Beautiful Rose	'96 FORD RANGER XLT 6 Cyl Auto AM/FM Cass One Owner, Priced To Sell	'96 WINDSTAR LX A/C Auto AM/FM Cass Super Family Vehicle
'96 FORD CONTOUR GL Sdn, A/C, A/OD, AM/FM Cass, "3" to Choose From - Must See	'94 FORD RANGER S/CAB Splash 4x4, Black Beauty	'93 FORD EXPLORER SPORT A/C Auto AM/FM Cass Must See Super Clean
'96 LINCOLN TOWN CAR Fully Loaded with Luxury 3 to Choose From	'97 FORD F150 4X4 XLT V8 A/OD A/C	'97 EXPEDITION XLT 4.6L Only 14,000 Miles
'95 FORD PROBE AC, 5-Spd, AM/FM Cass, Only 17,000 Miles, Super Clean	'93 CHEVY S-10 Supercab, V8, 5 Spd, A/C	'96 JEEP WRANGLER 5 Spd, AM/FM Cass, 4 WD Hard Top Super Clean, Fun to Drive
'94 PONTIAC FIREBIRD A/C, AT, 1-Owner	'98 F250 S/CAB 4X4 7.3 Diesel A/OC, AC, XLT	'95 GEO TRACKER 4x4 LSI A/C Auto, AM/FM Cass Convertible, Fun to Drive
'96 LINCOLN CONTINENTAL Fully Loaded With Sunroof, Luxury, 8 Cyl, Fun To Drive, 3 To Choose	'93 FORD F350 CREW CAB XLT Diesel Turbo A/OD, Lots of Extras Super-Clean	'95 JEEP GRAND CHEROKEE Laredo A/C Auto AM/FM Cass 5 To Choose From

ENGLE-RISSINGER AUTO GROUP

Midway Between Halifax And Millersburg • 717-896-3421 • 1-800-242-8075

HOURS: Monday-Friday 8:30 AM - 8:30 PM; Saturday 8:30 AM - 3:00 PM