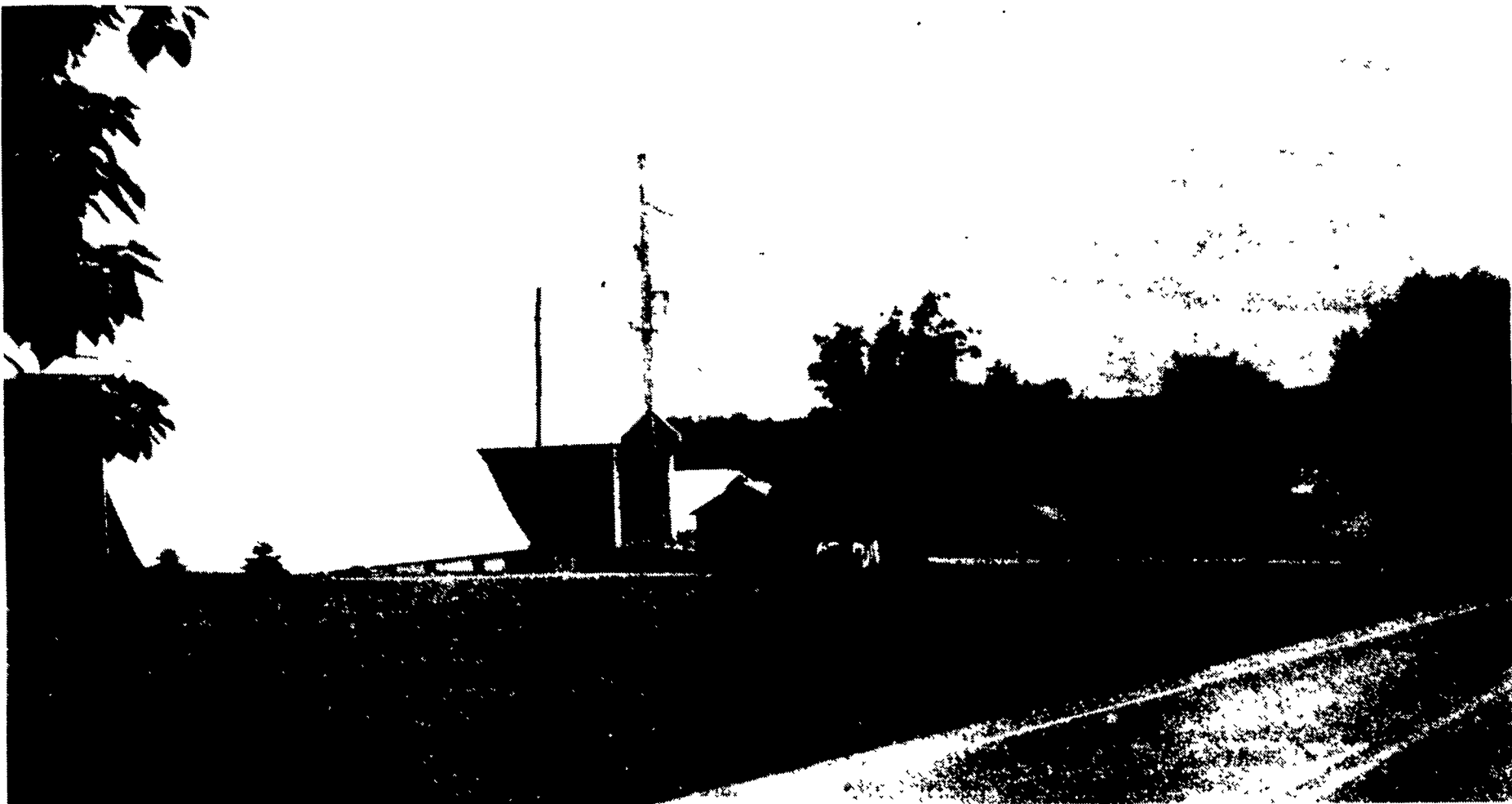
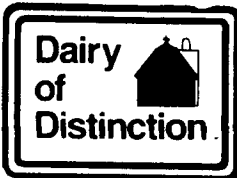


MELVIN ROGERS, JR.



At Rogers Dairy Farm near Spartansburg in Crawford County, Melvin Rogers Jr. farms 375 acres and milks 85 to 86 Holsteins in a conventional barn. His herd average is more than 20,000 pounds of milk with a feeding program of haylage, corn silage, and baleage grown on the farm. The cows are left out for two hours each day but kept indoors as a matter of efficiency. The helpers are pasture but they are also fed in the barn to maintain body weight.

The farm has been in the family for 65 years and Melvin has been farming here all his life. Over the years Melvin says major changes include going from horses to tractors and increasing the number of cows you must milk to make a living. Back in the early days the family could live off of 25 cows. Now you have 85 cows and still feel like you are working to make ends meet. To be a farmer, Melvin says you must be dedicated to hard work and like what you are doing.



SUGAR HILL DAIRY



This new Dairy of Distinction in Elk County is owned by John and Margaret Ann Engel, their son Jonathan, and cousin Cathy Palamtic. They farm 105 acres located on the main drag near St. Marys and raise corn, hay, and grain to feed the cows. They milk 70 Holsteins, mostly registered, in a tie-stall barn and have a corresponding number of replacement helpers. A century farm of 108 years, Sugar Hill

Dairy was the first herd on DHIA in the county. John said you need to stay on top of things, all the little things around the dairy, if you are going to make it. He isn't sure what they will do with the federal orders or with the milk price, but said the price paid to farmers should be higher than it is.