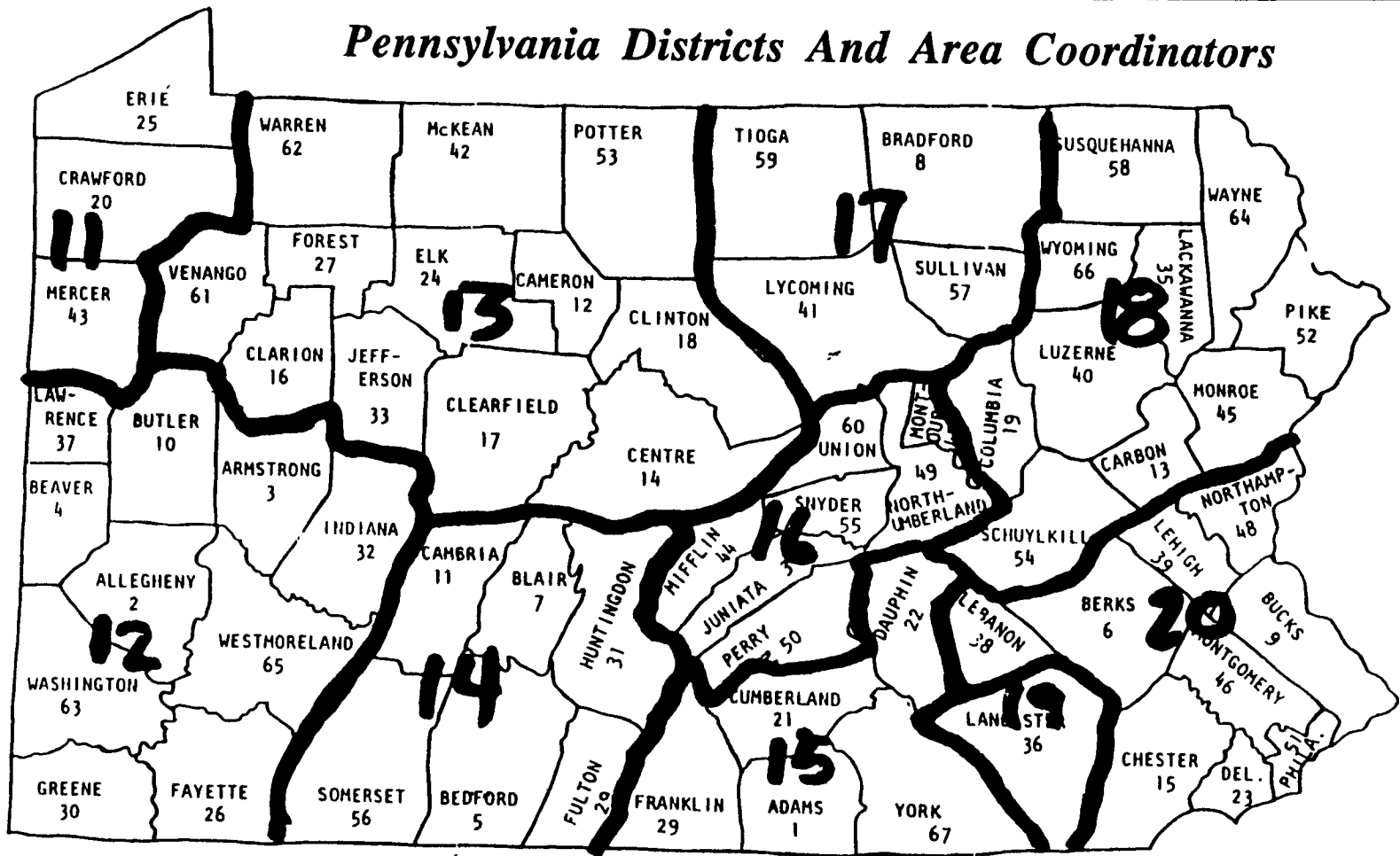


Pennsylvania Districts And Area Coordinators



District 11:
George Wilcox
Erie County Extension
850 East Gore Road
Erie, PA 16509
(814) 825-0900

District 13:
Susan Alexander
Jefferson County Service Ctr.
RD 5
Brookville, PA 15825
(814) 849-7361

District 15:
Norman Coons
20031 Black Road
Dry Run, PA 17220
(717) 349-2847

District 17:
Robert Hockenbrock
RD 1, Box 612
Richfield, PA 17086
(717) 694-3318

District 19:
James Barnett
1225 Industrial Highway
Southampton, PA 18966
(215) 322-0200

District 12:
Brett Brumbaugh
Box 123
Brockway, PA 15824
(814) 328-2095

District 14:
David & Janet Hileman
RDI Box 422
Tyrone, PA 16686
(814) 684-1498

District 16:
Robert & Bernice Gable
RD 1, Box 361
Newport, PA 17074

District 18:
Allen Roszel
RD 3, Box 74
Montrose, PA 18801
(717) 278-2433

District 20:
Russell Rooks
1431 N. Main St.
Allentown, PA 18104
(610) 437-2666

Farmer Boy Ag Systems Inc.

Congratulations the Dairy of Distinction Award Winners

DAIRYMEN: WANT EXTRA INCOME?

Call Us about new Contracts on Poultry and Hog Buildings



VENTILATION

See Us For A **FREE** Design & Cost of a **TUNNEL VENTILATION SYSTEM** To Fit Your Building

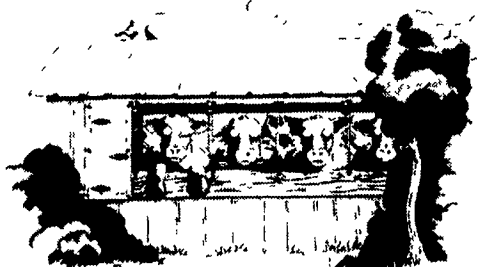


Beating the Summer Heat with Ventilation



SCHAEFER
Ventilation Equipment
Barn Kooler Fans

Because of its design, it provides more air movement and therefore more cooling effect than any other circulation fan

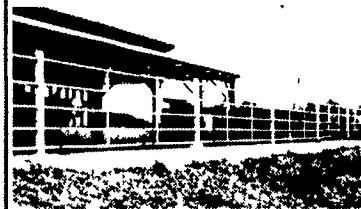


Cows see the lite.. **HERCULITE Heavy Duty Black-Out Tunnel, Dairy & Poultry Curtains**

The experts, engineers and veterinarians agree - the best building is a naturally ventilated building.

Herculite curtain systems offer state of the art, adjustable dairy sidewalls. Even when closed, the curtains allow for natural light and provide a snug environment for your herd

LEBANON VALLEY ENTERPRISES, INC.
Manufacturing • Powder Coating • Precast



- Gates & Fencing
- Loop & Free Stalls
- Headlocks
- Cattle Slats
- Feeder Panels

WATERING

The JUG
Frost-Free Livestock Waterer

Clean, Clean, Clean Animals adapt easily, Low/No electric use Frost Free Water and Dairy Approved



FEEDING



FEED BINS

We assemble, deliver and set up bins on your farm

- * Weather tight die-formed roof
- * Stronger engineered sidewalls
- * Ground controlled fill caps
- * Galvanized roll-formed legs
- * Engineered leg braced systems
- * Fast flowing hopper bottom



Flex-flo™

AUGER SYSTEM
in 2 1/4" dia. to 5" dia.

HOUSING

CALF HUTCHES by Calf-Tel™
RH & LH Access

Our Deluxe model features a new extra tall offset entry door opposite a right or left side feed access floor. Lets you group hutches side-by-side for easy feeding and service. Comes with two large pails, inside pail holder and eyebolts for lifting. Rainproof ridge-top ventilation keeps calves dry and comfortable



Hog & Poultry Contracts Available!

24 Hour Service



Same Day Shipping

7/25/98

Farmer Boy Ag Systems Inc.

410 East Lincoln Avenue, Myerstown, PA 17067
717-866-7565 • 1-800-845-3374

Hours: Mon.-Fri. 7 to 5:30
Sat. 7:30 to Noon

