

GAR-MAR ACRES

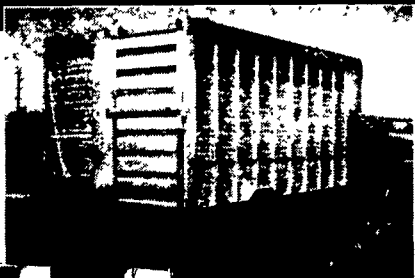


At Gar-Mar Acres, the LeRoy and Janet Garman family that includes their three sons Nathan Ray, 14; Joshua Ryan, 11; and Barry Lea, 9; farm 150 acres near the town of Woodbury in Bedford County. They milk 60 Holsteins in a tie-stall barn with a pipeline milker. The cows are fed TMR with corn and alfalfa as the roughage

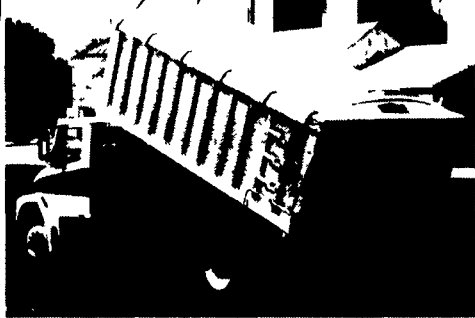
grown on the farm. LeRoy commented that the butter price was very low not that long ago and now is high. It all depends what people are hearing in the news about the food they eat. The Garmans move here from Lancaster County 11 years ago.

Agriculture Moves on EBY Bodies

Congratulations to all of this year's Winners!



Let EBY custom build one for you.



M.H. Eby custom-builds truck bodies for the agri-transportation market. Nobody offers more sizes and options in:

- **LIVESTOCK BODIES**-Lengths to 32', choice of heights and widths.
- **GRAIN BODIES**-Lengths to 24'; landscape and general purpose dumps to 12'.
- **FLATBED BODIES**-Lengths to 32', choice of 5 widths.

For greater payload capacity, Eby's aluminum design is equal in strength to steel and up to 40% lighter. Our corrosion-resistant components never need painting. That means minimum maintenance, improved appearance and higher resale value.

Eby products have superior standard features. And we offer custom options for virtually any application. Agriculture is your business - building bodies to haul it is ours.



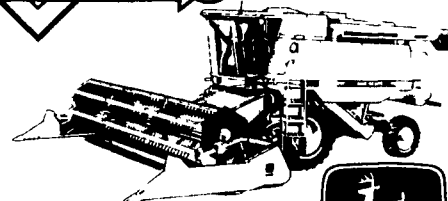
M.H. EBY, INC.

1194 Main Street (Rt 23) • Blue Ball, PA 17506
800/292-4752 • 717/354-4971 • FAX 717/355-2114
4435 State Road 29 • West Jefferson, OH 43162
800/752-0507 • 614/879-6901 • FAX 614/879-6904

Congratulations to the DAIRY OF DISTINCTION Award Recipients

SIZZLIN' SUMMER SALE ON USED COMBINES

5.5% Variable Rate
6.0% Fixed Rate
Or choose a finance waiver to September 1, 1999.



HOT RATES

Just in time for harvest! Get ready for our sizzlin' rates to go with our cool deals on all used combines and headers in stock. Choose 5.5%* variable rate financing or 6.0%* fixed rate financing for up to 60 months. Or choose a finance waiver* until September 1, 1999.

That means you can get the hottest deal of the summer on a dependable used combine, including incredibly productive used John Deere Maximizer™ Combines. And they're right on our lot today.

But you better hurry. These red-hot rates end August 31, 1998.

COOL DEALS

LEHIGH AG EQUIPMENT, INC.

6670 Rupperville Road, Allentown, PA 18106

610-398-2553 or 1-800-779-3616

Hours: Mon-Fri 7:00 to 5:30 Saturday 7:30 to 3

We Ship Parts Same Day To Your Farm

