

\*\*\*\*\*5-DIGIT 16802  
824 P3  
056034 980630  
PERIODICALS DIVISION  
PENN STATE UNIVERSITY  
W209 PATTE LIBRARY  
UNIV PARK PA 16802  
048

Vol. 43 No. 38 Five Sections Lancaster Farming, Saturday, July 25, 1998 \$29.50 Per Year 60¢ Per Copy

# Young Farmers View Satellite Mapping Technology

**ANDY ANDREWS**  
Lancaster Farming Staff  
**PEACH BOTTOM** (Lancaster Co.) — If there is one concern growers share, it's this: how do you improve a block of ground to make it more profitable?  
That question was addressed Monday evening here during a demonstration of field mapping. But this was no ordinary demonstration. About 18 Solanco Young Farmers Association members took turns in a jeep, seeing firsthand how satellites can be used to "grid" a field. Satellite and computer technology can be bound together to provide in-depth detail about the profile of soil, including nutrient levels, acidity, and other

elements.  
The real long-range bargain for farmers: see where nutrients, including those in manure, can be used more effectively to improve crop production.  
Tom Adams III of Creswell Lime in Bel Air, Md., provided the equipment for the demonstration

to the young farmers Monday evening at the Peach Bottom dairy farm operated by Ed Zug. Zug allowed Adams to map out a 6.2-acre segment of Zug's 148 acres.  
Zug cares for about 60 Holstein cows and some Jerseys on the farm.

The 6.2 acres, on a winding contour, are being rotated from corn to alfalfa this year.  
Adams, who has mapped and gridded 1,800 acres for various farms, drove a small jeep contain-

ing receiver and storage equipment. Using the global positioning satellite (GPS) system put in place by the government, Adams uses a special receiver/storage system  
(Turn to Page A20)

## Pennsylvania Requires Vet Certificates

**HARRISBURG** (Dauphin Co.) — An outbreak of a viral disease that causes mouth sores and ulcers in horses, cattle and swine

has broken out in three Southwestern states and to help protect the rest of the states, especially in the Northeast, some additional temporary biosecurity measures are being implemented.

In Pennsylvania, state Secretary of Agriculture Samuel Hayes Jr. has announced that the Department of Agriculture is requiring domestic animals entering Pennsylvania from states where the disease has been present to carry an official certificate of veterinary inspection.

Those states are New Mexico, Texas, and Arizona.

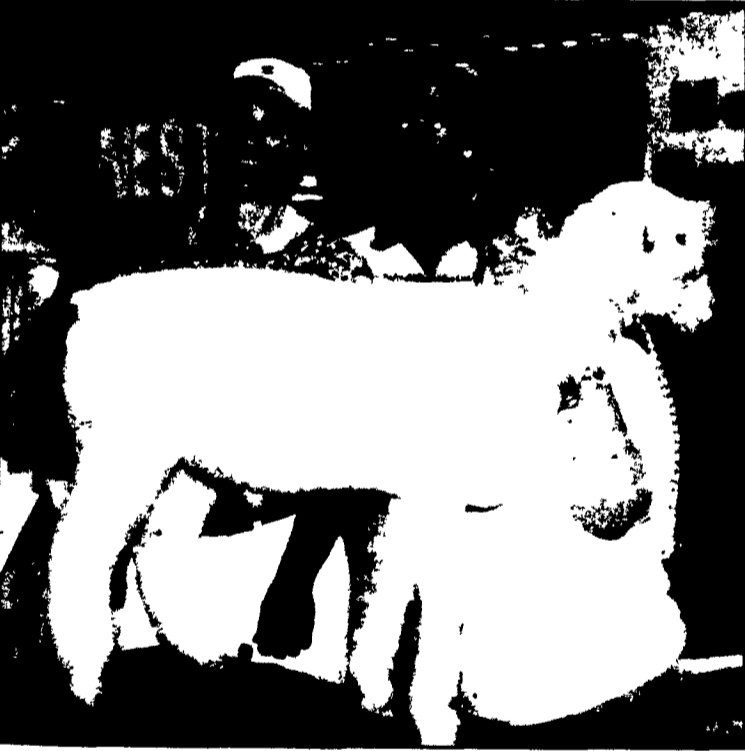
The disease is called vesicular stomatitis and, according to state veterinarians, it causes ulcers in the mouth of the animal and makes it difficult for them to eat and drink.

While severe cases can lead to the death of the animal, it is usually isn't the case, but instead the disease poses significant production problems if livestock can't eat correctly.

The disease is caused by a virus and most viruses have a five to seven day incubation time, and a  
(Turn to Page A25)



Tom Adams III, Bel Air, Md., left, provided the equipment for the demonstration to the young farmers. Adams checks over mapping results with Ed Herrmann, Solanco Young Farmers adviser. Photo by Andy Andrews



A \$2,000 bid for this Dorset lamb benefits the Pennsylvania FFA Foundation. The auction follows the annual Hoss's Fore FFA Golf Tournament and awards dinner held Monday evening at Foxchase Golf Course. From left are top bidders Brian Stevenson and Bill Richards, representing Pepsi Cola, with Rachel Day, who will show the lamb at upcoming competitions before selling the lamb again in the fall and donating half the profits back to the Grassland FFA Scholarship Fund. Photo by Lou Ann Good.

## FFA Golf Tournament Exceeds \$25,000 Goal

**LOU ANN GOOD**  
Lancaster Farming Staff  
**DENVER** (Lancaster Co.) — "Unbelievable!" Kerry Hoffman, FFA event coordinator, said as she tallied up the results of the annual Hoss's Fore FFA Golf Tournament and Dinner/Auction held Monday.

While the exact amount garnered from golfing fees and auction items was not known at press-time, it was evident that the Pennsylvania FFA Foundation exceeded its \$25,000 fund-raising goal.

"Every thing at the auction went for more than we ever dreamed," Hoffman said.  
Garnering the highest bid was a

Dorset lamb. Excitement coursed through the crowd with brisk bidding that culminated with a \$2,000 bid from Brian Stevenson and Bill Richards of Pepsi Cola.

Stevenson said that he and Richards had no intention of buying a lamb or of spending \$2,000 when he came to the event, but, like others in attendance, he likes to support FFA. Pepsi Cola's interest in FFA was sparked through its involvement with Hoss's Steak and Seafood House, sponsors of the fundraiser.

The unusual part about the \$2,000 bid is that the lamb was given to FFA member Rachel Day of New Holland. Originally, the  
(Turn to Page A22)



The new Dairy of Distinction farms from Pennsylvania are pictured in a special section with this issue of Lancaster Farming. In addition, we have short interviews with each of the dairy families behind these beautiful farmsteads and messages of congratulations from our advertisers. You'll want to look at this special annual section. To introduce the winning farms, we have part of the dairy herd of Anthony and Barbara Wertz, Manns Choice, in the above photograph.