

All Gardens Great & Small by York Co. Horticultural Agent Tom Becker



eggs and small larvae. Lacewings also feed on nectar as aphid honeydew.

Gardeners can reduce injury to beneficial insects by (1) avoiding the use of insecticides (2) by selectively using insecticides that are less harmful to beneficial insects and (3) planting a variety of vegetable crops. Practicing all three things creates a more favorable habitat for beneficial insects to remain in the garden permanently. Moisture and an adequate pest population helps too.

Green lacewings are generalists but have a particular liking to aphids. You'll find these pale green insects on sweet corn, potato, cole crops, tomato, peppers, eggplant, asparagus, and leafy greens. Developing

lacewings larvae eat up to 600 aphids each throughout the summer.

Lady Beetles feed on aphids and other insects on potatoes, peas, sweet corn, cole crops, and tomato. Over 450 species are found in North America. The convergent lady beetle is one-quarter inch long with orange wings covers and six small spots on each wing. The number of spots can vary. Some adults have no spots on their wing covers.

Lady beetle larvae are dark, alligator-like insects with three pair of prominent legs. They are easily mistaken for a pest on vegetables. Releasing large numbers may minimize aphid damage on crops. Handle the beetles carefully and distribute them at the base of the plant

rather than broadcasting them over the top of the crop.

Females of the convergent lady beetle lay clusters of 10-20 yellowish-orange eggs on plants infested with aphids. Lady beetles prefer high humidity days and shelter for protection from adverse weather. They overwinter and hibernate as adults. You'll see them at the base of trees or along buildings. Overwintering adults should not be disturbed. They are vulnerable to attack by other predators and parasitoids.

Lady beetles and other beneficial insects and nematodes are available at insectaries. Many insects require a special diet to prevent them from migrating out of your garden. Keep them well fed all summer long.

LAND PRIDE



Increase Your Reach



25 Series

Parallel Arm Rotary Cutter

- Designed for ponds, embankments and ditches
- Parallel linkage in arms allows clearing of obstacles without changing attitude of cutting deck
- Horizontal cutting reach 186", vertical reach 137"
- Hydraulic cylinder available to reset the protective break-away feature of cutter
- Heavy-duty 10 gauge deck
- 2" cutting capacity

Increase your reach without sacrificing control with the Land Pride Parallel Arm Hydraulic Rotary Cutter.

Pennsylvania

Betts Equipment
3139 Windy Bush Road, Rt. 232
New Hope, PA 18938
215-598-7501

Thomas L. Dunlap
Rt. 220, Main St. Exit
Jersey Shore, PA 17740
717-398-1391

Marshall Machinery, Inc.
Route 652
Honesdale, PA 18431
717-729-7117

C.B. Hooper & Son, Inc.
Main Street
Intercourse, PA 17534
717-768-8231

Eckroth Bros Farm Equipment
Rd 2, Box 24A
New Ringold, PA 17960
717-943-2131

Norman D. Clark & Son, Inc.
Honey Grove, PA
717-734-3682

C.B. Hooper & Son, Inc.
East Main Street
McAlisterville, PA 17049
717-463-2191

Eckroth Equipment Co.
4910 Kernsville Rd
Orefield, PA 18069
610-366-2095

Pikeville Equipment Inc.
RD 2, Oysterdale Road
Oley, PA 19547
610-927-6277

Deerfield Ag & Turf Center, Inc.
RR 2 Box 212
Watsonstown, PA 17777
717-538-3557

Hines Equipment
RT. 220, Belwood, PA
814-742-8171

Stoltzfus Farm Service
Cochranville, PA
610-593-2407

Detlan Equipment, Inc.
141 East Main St
Silverdale, PA 18962
215-257-5177

Keller Brothers
R7 Box 405
Lebanon, PA 17042
717-949-6501
1950 Fruitville Pike
Lancaster, PA 17601
717-569-2500

Stouffer Bros Inc.
1066 Lincoln Way West
Chambersburg, PA 17201
717-263-8424

Dunkle & Grieb, Inc.
RR 2, Box 14
Centre Hall, PA 16828
814-364-1421

M.S. Yearsly & Sons
West Chester, PA
610-696-2990

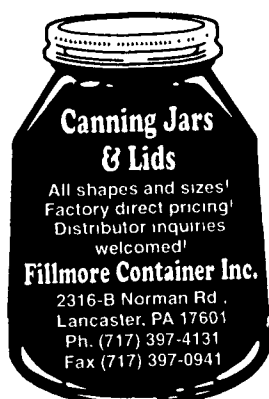
New Jersey

Rodio Tractor Sales
North White Horse Pike
Hammonton, NJ 08037
609-561-0141

Frank Rymon & Sons, Inc.
RD 3, Box 355
Washington, NJ 07882
908-689-1464

Warren County Service Center

228 Route 94
Blairtown, NJ
908-362-6916



Canning Jars & Lids

All shapes and sizes!
Factory direct pricing!
Distributor inquiries
welcomed!

Fillmore Container Inc.

2316-B Norman Rd.
Lancaster, PA 17601
Ph. (717) 397-4131
Fax (717) 397-0941

MILK

Where's your mustache?

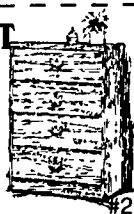


UNCLAIMED FREIGHT CO. AND LIQUIDATION SALES INC.

4 DRAWER CHEST

Pine Finish and Brass Hardware
Reg. Ret \$149.95

OUR CASH PRICE \$69.95
WITH COUPON **\$39.04**



TWIN/DOUBLE FUTON BUNK BED

Trailer Load • Dealer Refusal
with 8" Futon Mattress
Red • Black • White

Reg. Ret \$898.95
Reg. Low Price \$329.95
WITH COUPON **\$279.95**



MATTRESS BLOWOUT

3 Pc. Mattress Set King Only

Made for Large Hotel Chain Reg. Retail \$1,000

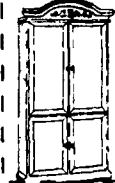
Our Price **\$249.95**

King Mattress Only

Manufacturer Closed Local Factory

Reg. Retail \$599.95 Our Price **\$129.95**

UNBELIEVABLE PRICES! Sold As Is



Armoire/Entertainment Center

74" Tall Bleached Oak Shelf Can Be
Removed To Convert This Armoire Into An
Entertainment Center. Which Will Fit A TV
VCR Tape Storage Etc. Don't Miss this

Only 80 to Sell

Reg. Retail \$749.95

Closeout **\$189.95**



SWIVEL ROCKER & OTTOMAN

Comes in a variety of colors

Reg. Retail \$329.95

Closeout Price **\$129.95**



DOOR CHEST

Your Choice Oak or White Wash Finish

Reg. Price: \$499.95

Our Price:

\$99.95

Closeout



FULTON SOFA & CHAIR CLOSEOUT

White, Green, Black Comes w/8" Futon Mattress &
Chair Mattress

Reg. Retail \$989.95

Our Low Price \$479.95

CLOSEOUT

\$269.95

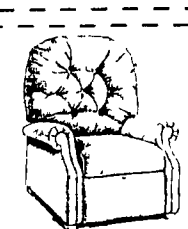


SOFA & LOVESEAT CLOSEOUT



Fairview Arbor
Green
DON'T MISS

Reg. Ret \$2100
CASH PRICE \$749.95
CLOSEOUT PRICE **\$595.95**



RECLINER

Reg. Ret. \$329.95
OUR CASH PRICE \$129.95

WITH COUPON **\$89.88**

5 DRAWER CHEST

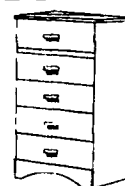
Maple Finish

Reg. Price: \$399.95

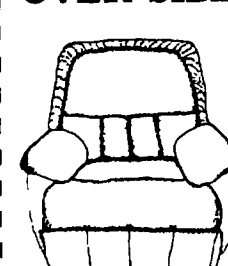
Cash Price:

\$59.95

Closeout



OVER-SIZED RECLINER



Reg: \$799.95
Our Price:

\$249.95

4 Colors To Choose
Mushroom, Wine,
Evergreen & Black

OPEN SUNDAYS

BASSETT MATTRESS & FLEXSPRING

Due to the fact that the mattress industry is a highly competitive one, we have decided to offer a special promotion. We will be offering a 10% discount on all mattresses and springs. This offer is good for a limited time only. Don't miss this opportunity to save on your next mattress purchase.

	Reg. Ret.	OUR CASH PRICE	SPECIAL
Single	\$129.95	\$129.95	\$129.95
Double	\$159.95	\$159.95	\$159.95
Queen	\$219.95	\$219.95	\$219.95
King	\$279.95	\$279.95	\$279.95

SERTA MATTRESS & FLEXSPRING

Single	Reg. Ret. \$129.95	OUR CASH PRICE \$149.95
Double	Reg. Ret. \$159.95	OUR CASH PRICE \$189.95
Queen	Reg. Ret. \$219.95	OUR CASH PRICE \$249.95
King	Reg. Ret. \$279.95	OUR CASH PRICE \$299.95

PRICES INCLUDE BOTH PIECES

BIG SELECTION OF WOOD & METAL BUNK BEDS

HUNDREDS OF OTHER ITEMS!

3019 Hempland Road, Lancaster 397-6241

We are a four store chain not affiliated with any other stores.

Stores in: LANCASTER • YORK • CARLISLE • PA • ELKTON • MD

LANCASTER STORE HOURS: Mon-Fri 9-9 • Sat 9-6 • Sun Noon-5

• No Refunds • No Exchanges • For purchases with a check bring drivers license and phone numbers • CASH & CARRY • FINANCING AVAILABLE

Not responsible for typographical errors. We reserve the right to substitute gift items.