

# Lebanon Area Fair Set For July 25-August 1



Tara Fisher plays in a grain box, as opposed to a sand box, with farm toys at the Lebanon Area Fair.

(Continued from Page A32)

## Friday, July 31

- |           |   |
|-----------|---|
| 9:00 a.m. | Main Exhibition Hall Opens                                    |
| 9:00 a.m. | Open Holstein Show  |
| 9:30 a.m. | Youth Livestock Judging Contest                               |
| 5:00 p.m. | Allen's Illusions   |
| 5:00 p.m. | Sausage Pattle Sale   |
| 6:00 p.m. | Allen's Illusions   |
| 6:00 p.m. | Youth Livestock Auction                                       |
| 7:00 p.m. | Karaoke in the Pavilion (Open microphone followed by contest) |
| 7:30 p.m. | Pro Arena Trucks & Monster Trucks (\$6.00)                    |
| 7:30 p.m. | Allen's Illusions   |
| 8:30 p.m. | Main Exhibition Hall will be closed to the public             |
| 9:00 p.m. | All exhibits are released                                     |

## Saturday, August 1

- |            |  |
|------------|--|
| 9:30 a.m.  | No exhibits remain on grounds. Rides and food stands will open at noon |
| 12:00 noon | Fairground clean-up all help is welcome.                               |
| 7:00 p.m.  | Rides & Food Stands Open   |
|            | Demo Derby followed by fireworks (\$8.00)                              |

## FOR ALL THE JOBS YOU DO



Kubota's new, powerful B Series tractors (13 PTO HP, 16 PTO HP, 18 PTO HP) are equipped with Kubota's new liquid-cooled E-TVCS diesel engines, enclosed muffler and exhaust pipe and ready to work

Fuel efficient and rugged to handle all your farm, commercial and lawn care jobs and are available in 2 or 4 wheel drive with optional Bi-Speed Turn. Easy attach/detach mid-mount mowers and powerful Kubota loaders increase versatility and productivity

Roomy operator's deck, power steering, high ground clearance and pop-up hood for easy maintenance are featured



**Kubota**

SEE OUR DISPLAY AT THE  
★ **LEBANON AREA FAIR** ★  
SAT., JULY 25 to SAT., AUG. 1

YOUR FULL LINE KUBOTA PRODUCT HEADQUARTERS  
• INVENTORY • PRICE • KNOWLEDGEABLE SALES STAFF  
• SERVICE EXPERIENCE

• PARTS  
• SALES  
• SERVICE

**KELLER BROS.**  
**KUBOTA**

FINANCING  
OR CASH  
DISCOUNTS  
AVAILABLE

TRACTORS & EQUIPMENT

WE SHIP PARTS  
UPS

Serving Central PA Since 1921

CALL FOR DETAILS  
ON LEASING

**LEBANON**

Rt. #7, Box 405, Lebanon, PA 17042  
Rt. 419 1 mile West of Schaefferstown

717-949-2000

STORE HOURS  
MONDAY-FRIDAY 7:30-5:00  
SATURDAY 7:30-12:00

2 Locations

**LANCASTER**

1950 Fruitville Pike, Lancaster, PA 17601  
At Route 30 & Fruitville Pike

717-569-2500

## Farmer Boy Ag Systems Inc.

### VENTILATION

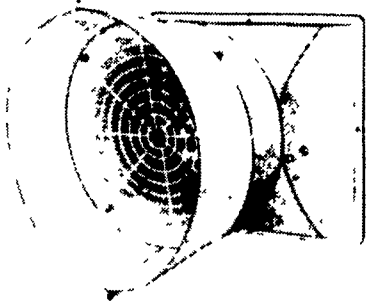
### Your Complete Fan Supplier

**AIRSTREAM** ventilation systems A Division of **GSI**

#### MAXI-BRUTE™ SLANT-WALL BELT DRIVE FANS

LIFETIME-GUARANTEED FIBERGLASS COMPOSITE HOUSINGS  
• Never rust • Never need painting • Lifetime-guaranteed fiberglass composite props • Choose 36", 42" or 48" size • Aluminum motor mounts • Energy-efficient motors • Slant-Wall Housing of Lifetime-Guaranteed Fiberglass Composite The right design for wind and weather and the right material for long life

See Us For A FREE Design & Cost of a  
**TUNNEL VENTILATION SYSTEM**  
To Fit Your Building



**SCHAEFER**  
Ventilation Equipment

#### Barn Cooler Fans

20" - \$159 24" - \$179

36" - \$209

Because of its design, it provides more air movement and therefore more cooling effect than any other circulation fan

**AIRSTREAM** ventilation systems A Division of **GSI**

#### Galvanized FANS

New Economical line of galvanized fans available to fit any need or application. All wall housings are manufactured out of "Prime" G90 series galvanized steel for a long life and sturdy construction.



### PLEASANTAIRE CEILING FANS



**CANARM**

\$69

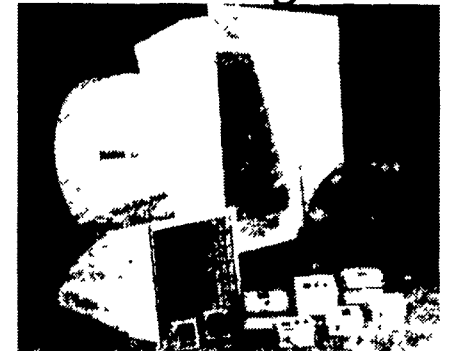
In summer ceiling fans on high speed create an evaporative cooling effect, making animals feel cooler and increasing productivity  
"CP" series Ceiling fans are available with 36", 48" and 56" blade sweeps. Our CP56FR and CP56S models come with a reversible motor. All other models are downdraft only

The Ventilation System Experts  
**aerotech**

Beating the Summer Heat with Ventilation



### Multifan VENTILATION EQUIPMENT



See the Complete Line of Multifan Fans 8" to 48"

- Slant Wall with Cone
- Standard Exhaust Fans
- Slant Wall with Hood
- Specialty Fans

### FEEDING



### FEED BINS

We assemble, deliver and set up bins on your farm

- Weather tight die-formed roof
- Stronger engineered sidewalls
- Ground controlled fill caps
- Galvanized roll-formed legs
- Engineered leg braced systems
- Fast flowing hopper bottom



with the **Flex-flo™**

### AUGER SYSTEM

in 2 1/4" dia. to 5" dia.



### FLOORING

Galvanized Woven Metal  
**HOG FLOORING**



- Excellent for farrowing/nursery pigs
- Doesn't retain bacteria
- No extra charge for custom sizes
- Easy cleaning
- Surface is non-porous
- Low cost flooring



Woven wire is generally used for hog flooring but is not limited to this use. Elevator fencing, fork truck safety cages, wire truck tailgates etc. can also be made from same construction



Hog & Poultry Contracts Available!

Hours: Mon-Fri 7 to 5:30  
Sat 7:30 to Noon

24 Hour Service

## Farmer Boy Ag Systems Inc.

410 East Lincoln Avenue, Myerstown, PA 17067

7/18/98

Same Day Shipping

717-866-7565 • 1-800-845-3374

