

Estimated Daily Livestock Slaughter

Under Federal Inspection

July 15, 1998

	CATTLE	CALVES	HOGS	SHEEP
WEDNESDAY 7/15/98 (EST)	120,000	5,000	364,000	12,000
WEEK AGO (EST)	126,000	6,000	357,000	12,000
YEAR AGO (ACT)	132,000	7,000	336,000	14,000
WEEK TO DATE (EST)	364,000	16,000	1,068,000	33,000
SAME PD LT WK (EST)	366,000	15,000	959,000	27,000
SAME PD LT YR (EST)	390,000	19,000	961,000	42,000

Oklahoma City Feeder Cattle

Oklahoma City, OK
Wed Jul 15, 1998

USDA-OK Dept Ag Market News
Oklahoma National Stockyards - Weekly Cattle Summary

Compared to last week: Feeder cattle and calves 3.00-4.00 lower. Demand moderate at this level. However combelt buyers quiet with market driven by Texas interests. Large run primarily due to continued drought in Oklahoma and Texas. Quality plain to average, end attractive with large supply of Texas crossbreds. Supply also included several strings of reputation calves in fleshy condition. Weigh-ups average to full. Feeder cattle in medium to thin flesh; calves medium to fleshy condition. Slaughter cows 3.00-4.00 lower. Slaughter bulls 3.00 lower. Demand light for slaughter cows as drought in Texas and much of Oklahoma has provided over supply to southern packers. Demand moderate from country buyers as lower prices for bred cows has sparked interest from northern areas not affected by drought. Total of 1250 cows and bulls sold with 50 percent to packers. Receipts this week 16,225; last week 7,468; last year?ppply consisted of 78 percent yearlings; 14 percent c?ves under 600 lbs; 8 percent cows and bulls with half to packers. Prices fol-

low with weighted average weight and price in parenthesis.

Feeder Steers: Medium and Large 1 350-400 lbs (373 lbs) 79.00-82.00 (80.29); 400-500 lbs (450 lbs) 77.00-80.00 (79.10); 500-600 lbs (550 lbs) 73.00-78.25 (76.88); 600-650 lbs (621 lbs) 69.50-74.25 (71.38); Calves 650-700 lbs (679 lbs) 66.25-72.00 (68.94); Yearlings 650-700 lbs (684 lbs) 68.25-72.75 (70.46); 700-750 lbs (727 lbs) 67.50-71.50 (69.49); 750-800 lbs (769 lbs) 67.00-69.50 (67.97); 800-850 lbs (822 lbs) 65.75-69.25 (67.25); 850-900 lbs (871 lbs) 64.00-67.50 (65.84); 900-950 lbs (919 lbs) 64.50-66.50 (65.62); 950-1000 lbs (984 lbs) 61.75-62.50 (62.03); 1035 lbs 59.00. Holsteins: Large 2 640 lbs 49.00? Feeder Heifers: Medium and Large 1 450-500 lbs (484 lbs) 69.75-73.75 (72.52); 500-600 lbs (550 lbs) 68.00-72.50 (70.10), fleshy 64.00-68.75; 600-650 lbs (633 lbs) 65.75-70.50 (67.78); 650-700 lbs (683 lbs) 63.75-68.25 (65.95); 700-800 lbs (750 lbs) 62.75-66.25 (64.29); 800-850 lbs (821 lbs) 61.00-63.00 (61.78); 940 lbs 59.25.

Slaughter Cows: %Lean ?ght Price Range Low Dress High Dress Bnr & Brk 75-85% 900-1575 30.25-32.50 27.50-31.00 32.25-35.50 few 75-85% 700-850 27.00-32.00 25.00-28.00 Lean 85-90% 775-1300 29.00-31.00 25.00-28.50 30.25-33.00 few 85-90% 650-775 27.00 24.00-26.25

Slaughter Bulls: Weight Price Range Low Dress High Dress Yield Grade 1-2

1300-1950 42.50-45.50 39.00-44.00 45.00-48.50

Estimated dressed cost at Oklahoma National Stockyards: Lean 64.55, few under 750 lbs 59.45; Boners 63.00, few under 850 lbs 58.75; Breakers 61.15, few Y.G.

5 53.50. Bulls 79.75.

Replacement Cows: Pretested for Bangs, pregnancy, and age Medium and Large 1 4-5 yr old 1000-1200 lbs 4-6 mo bred high quality 470.00-540.00; 3-6 yr old 950-1250 lbs 3-6 mo bred avg quality 380.00-445.00.

Pairs: Medium and Large 1 2-3 yr old 950 lb BWF 175 lb calves high quality 625.00; 2-3 yr old 850-875 lbs 125-150 lb calves high quality 540.00-580.00; 4-5 yr old 875-1200 lbs 150-200 lb calves high quality 575.00-610.00; 6-7 yr old 950-1000 lbs 200 lb calves avg quality 535.00-540.00; 8-10 yr old 800-1000 lbs 100-250 lb calves avg quality 400.00-460.00.

Aberdeen Sales Company, Inc.

Complete Auction & Appraisal Service
Churchville, Md.

Report Supplied by Auction
Wednesday, July 15, 1998

SLAUGHTER STEERS: 1.00 LOWER. CHOICE 2-4 1100-1400 LBS. 61.50-64.00; SELECT & LOW CHOICE 1000-1500 LBS. 55.00-61.00; HOL. STEERS HI CHOICE & PRIME 1250-1400 LBS. 56.00-58.50; CHOICE 1200-1500 LBS. 54.50-56.50; SELECT ALL WEIGHTS 47.00-52.00.

SLAUGHTER HEIFERS: 1.50 LOWER. CHOICE & PRIME 950-1300 LBS. 59.50-62.00; SELECT ALL WEIGHTS 900-1400 LBS. 49.00-55.00.

COWS: 2.00 LOWER. BRK. UT. & COMM. 2-4 BULK 37.00-41.00; HI

DRESSING 41.00-43.00; CUTTER & BON. UT. 36.00-39.00; HI DRESSING 39.00-41.00; CANNER & CUTTERS 29.00-37.00; LOW DRESSING 22.00-29.00.

BULLS: STEADY. ALL WEIGHTS 1100-1900 LBS. 46.00-56.00.

VEAL CALVES: STEADY. CHOICE AND PRIME 200-400 LBS. 73.00-84.00; HI GOOD AND LOW CHOICE ALL WEIGHTS 49.00-61.00.

FARM CALVES: 5.00 LOWER. HOL. BULLS 100-125 LBS. 85.00-103.00; HOL. BULLS 85-95 LBS. 49.00-86.00. HOL. HEIFER CALVES 100-120 LBS. 100.00-142.00; SMALL FRAME 70-105 LBS. 30.00-76.00; SLAUGHTER CALVES ALL WEIGHTS 15.00-40.00.

FEEDER CATTLE: MARKET 5.00 LOWER. BULLS & STEERS 400-900 LBS. 64.00-79.00; HEIFERS 300-700 LBS. 48.00-63.00.

LAMBS: MARKET 5.00 HIGHER. CHOICE & PRIME 90-110 LBS. 88.00-93.00; LIGHTER LAMBS 110.00-132.00; HEAVY EWES 22.00-29.00; LIGHT 33.00-51.00.

GOATS: STEADY. SMALL 20.00-30.00; MEDIUM 40.00-60.00; LARGE 80.00-110.00.

HOGS: MARKET 3.00 LOWER. 210-250 LBS. 35.00-37.00; 255-300 LBS. 30.00-35.00. HEAVY SOWS 23.00-27.00, LIGHT 18.00-21.00. BOARS ALL WEIGHTS 14.00-18.00.

Four States Livestock

Hagerstown, Md
July 15, 1998

Report supplied by Auction

SLAUGHTER COWS: 62 HEAD, 1.00-2.00 LOWER. UTILITY 37.00-40.50; LOW DRESSING 35.00-37.00; CANNERS 33.00-37.50; SHELLY 33.00 DOWN.

BULLS: YG#1 DRESSING 1614 LBS. 57.75; HOLSTEINS 46.00-49.50.

FED STEERS: NO CHOICE; FEW SELECT 1300 LBS. TO 53.00.

HEIFERS: DAIRY CULLS 1250 LBS. TO 46.00.

VEAL CALVES: 150 HEAD. CULLS 85-110 LBS. 28.00-35.00, 60-85 LBS. 22.00-30.00, WEAK/ROUGH 20.00 DOWN.

FARM CALVES: HOLSTEIN BULLS 5.00-10.00 HIGHER! #1 95-120 LBS. 75.00-95.00; #2 40.00-65.00; 85-95 LBS. 35.00-50.00; HOLSTEIN HEIFERS #1 90-110 LBS. TO 125.00; #2 80-100 LBS. 40.00-90.00.

BUTCHER HOGS: NONE. SOWS: 300-400 LBS. 21.00-23.50; 400-600 LBS. 24.00-26.00.

STOCK CATTLE: 79 HEAD. STEERS 500-800 LBS. TO 59.00; HOLSTEIN 900-1050 LBS. 46.00-50.00.

HEIFERS: 300-500 LBS. 54.00-64.00; 500-700 LBS. 52.00-59.00.

BULLS: FEW 400-650 LBS. 62.00-64.00; PUREBRED ANGUS 910 LBS. AT 63.00.

DAIRY REPLACEMENTS: 36 HEAD. LARGE SPRINGERS 825.00-1085.00; MEDIUM 650.00-800.00; SMALL TO 575.00; 1 LARGE FANCY FRESH AT 1150.00; MEDIUM FRESH TO 860.00; SHORTBREDS TO 485.00; FEW 350 LBS. OPEN AT 84.00 PER HUNDRED; HOLSTEIN BULLS SMALL 350.00-475.00, 1 AT 700.00.

LAMBS: CHOICE 90-120 LBS. 77.00-85.00; GOOD 60-90 LBS. 75.00-85.00.

PIGS AND SHOATS: 11 HEAD 28 LBS. AT 18.00.

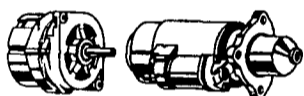


Quality Assured Case IH Parts

BEST PARTS.... BEST DEAL.... BEST VALUE

When You Need Parts,
Call SALEM For FAST
Courteous Service.

Express Service To Your Farm....
Please Call Today.



"Thanks for
your business!"



SALEM FARM SUPPLY

Route 22, Salem, NY

1-800-999-FARM (3276)

FAX: 518-854-3057

CASE CREDIT CARD - FARM PLAN - VISA - MASTERCARD - DISCOVER

CASE III

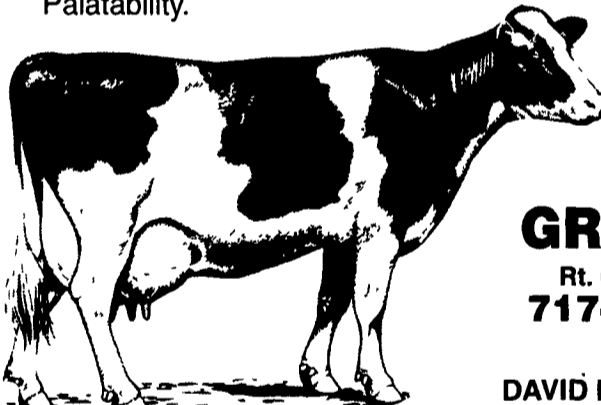
MOLDY CORN?

Let Schnupp's Grain Roasting SAVE
Your Moldy Corn!

- Flame Roasting Kills the Molds Present in Corn.
- Flame Roasting Will Reduce Toxins to Safe Levels.
- Flame Roasting Will Remove Odor and Increase Palatability.



Those roasted
grains
are really tasty



SCHNUPP'S GRAIN ROASTING

Rt. 6 - Box 840, Lebanon, PA 17046

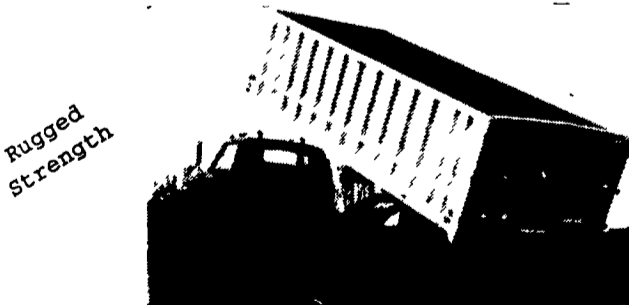
717-865-6611 Fax #865-7334

800-452-4004

DAVID N. GROFF, RD #3 Lewisburg, PA

717-568-1420

ALUMINUM GRAIN BODIES & ALUMINUM REPAIRS by



Rugged
Strength

Dependable
Performance

These ultra-light bodies are designed for strength through engineering, not strength with bulk. For example, a 16' grain body with tailgate and 48" sides weighs only 1490 lbs. complete. We'll build you any length or any side height up to 60".

Also available:

- Double swinging hay hauling tailgate
- Barn door type tailgate
- Slide out cattle chutes
- Diamond flooring
- Pull out panel tailgates
- Any size grain chute

HEWEY WELDING

Box 2312, RD4 Lebanon, PA 17042 (717)867-5222

MARTIN'S TIRE & ALIGNMENT

We're Your Firestone
Farm Tire Dealer!

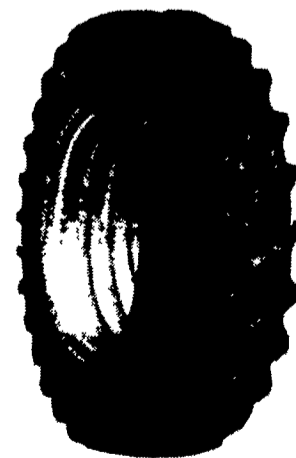
Count on us year-round for:

- A complete line of Firestone farm tires
- In the field emergency repair service
- Implement and light truck tires in stock too!

Call For Prices

Firestone All Traction 23°

18.4R34	1★	\$550.00
20.8R38	1★	\$730.00
20.8R38	2★	\$885.00
20.8R42	2★	\$890.00



Visit or call us today!

MARTIN'S TIRE & ALIGNMENT

Located in Churchtown
119 Water St., Narvon, PA 17555

717-445-4993



THE LEADER IN THE FIELD