

FOR SALE
89 DODGE RAM 350



Automatic,
Good
Condition

\$5,000 O.B.O. - 717-768-3769



1990 Chevy 1 Ton 350, AT, AC,
87,000 Mi., 17' Landoll Alum. Rollback,
Excellent Cond.

Call Scott (908) 782-7658



1999 F350 4X4
SUPERCABS Diesels,
Automatics, Duallys
1 IN STOCK
3-CREW CABS COMING



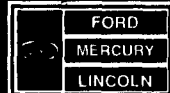
1986 FORD F350
CREW CAB 4X4
Auto. Gas, XLT-Loaded
Only 25,000 Miles, #8572A
Priced to
Sell at **\$24,999**



1999 FORD F350
4X2 2-3 YD. DUMP
BODY
A/C, Gas, Automatic

All Ready For Immediate Delivery At Prices That will Make You Smile!

Unless the Chapman Emblem is on Your Car or Truck, You Probably Paid Too Much!



CHAPMAN LEBANON



20th & CUMBERLAND STS. - RT 422 WEST

9-9 DAILY 9-5 SATURDAY • SHEEHY HOTLINE (717) 272-7671 OR 533-5293

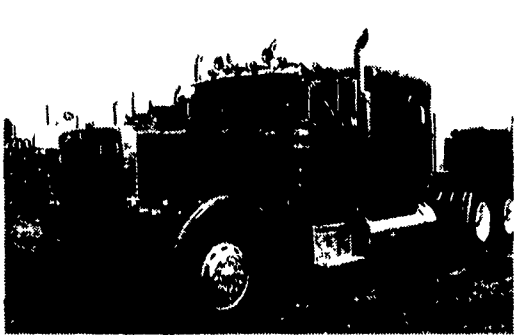
HUNTER KEYSTONE PETERBILT LP



1467 Manheim Pike • Lancaster, PA 17604
717 299-6630 • 800 243-2458



88 Freightliner, SBFA, Cummins 350 Eng.,
9 Speed, Air Susps, Jake Brake



87 Peterbilt 379, 3406-400 Eng., 13 Speed,
Trans., 3.90 Ratio 63" Sleeper, Air Ride Susps.



1998 Peterbilt 330 Cat 3126, 275 HP, 9 Speed
Trans., 10# Frt. & 23# Rear; Air Trac. Susp, 10'
Steel Dump, Loaded



1994 Kenworth W900L, S60-425 Eng., 60" Sleeper,
14613 Trans, DS402 Rear, Air Susps, New Reman
Engine

Woodcrest Motors

SPECIALIZING IN TRUCKS & VANS

1200 North Reading Rd., (Rt. 272) Stevens, (Lancaster Co) PA 17578
717-336-3130



94 DODGE RAM 3500 Handicap
Van, V8, AT, Dual A/C & Heat,
Wheelchair Lift, 79,000 Miles, Dk Blue



97 FREIGHTLINER FL60 Cat Diesel 6 Spd
A/C, 23,000 GVW, 6 000 Miles, White



89 FORD F350 DUMP TRUCK
460 V8, 5-speed, Red, 33,000 Miles
\$11,950



(2) **92 GMC TOP KICK**
Lo-Pro 366 V8 Gas AT, PS
PB, 79,000 Miles



91 FORD F250 EXT CAB XLT,
V8, AT, A/C, Most Options, 8600
GVW, 81,000 Miles



94 CHEV 1500 EXT CAB
Silverado, V8, AT, A/C Most Options
36,000 Miles



93 GMC 3500 CREW CAB DUALLY
6.5 Turbo Diesel, AT, A/C, PW, PL, C.T
Sierra Pkg., 73 000 Miles, White



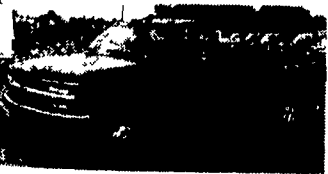
97 DODGE 350 CLUB CAB, DUALLY 4X4
Cummins Turbo Diesel, AT, A/C, PS, PB, PW, PL,
C.T LE pkg, 5,000 mi Driftwood/blk #D226



96 FORD F250 SUPER CAB 4x4
Power Stroke Turbo Diesel, Short Bed, XL
Trim, 5-Speed, AC, C.T, Dual Tanks, Only
23,000 Miles, Black #F651



94 FORD F350 CREW CAB 4X4
XLT, 460 V8, AT, A/C, PW, PL, 56,000 Miles,
Dk. Green



94 CHEV. 3500 DUALLY 4X4
6.5 Turbo Diesel, AT, A/C, PS, PB,
32,000 miles, Blue, #C392



91 CHEV K3500 EXT. CAB DUALLY
Western Hauler Body, 454, V8,
Silverado, AT, A/C, Most Options,
48,000 Miles, Blue



Bobby Gerhart's
Truck World

2400
E. Cumberland St.
Rt. 422
Lebanon, PA
17042
717-273-7995

Mon. - Fri. 9-8, Sat. 9-3



96 DODGE RAM 1500 CLUB CAB
Laramie SLT Pkg, 360 V8, AT, A/C, C.T,
PW, PL, 23,000 Miles, Dk Green #D239



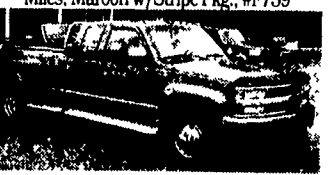
94 DODGE RAM 3500 DUALLY
Cummins Turbo Diesel, AT, A/C, PW, PL,
C.T, 45,000 Miles, Red/Driftwood #D212



94 FORD F350 CREW CAB DUALLY
7.3 Turbo Diesel, XLT, AT, A/C, Most
Options, 112,000 Miles, 2-Tone Blue/White,
Looks & Runs Excellent, #F737



93 FORD F350 CREW CAB DUALLY
7.3 Turbo Diesel, Centunon Conversion
Pkg., 5-Spd, A/C, Most Options, 80,000
Miles, Maroon w/Stripe Pkg., #F739



94 CHEV. 3500 EXT. CAB DUALLY 4X4
6.5 Turbo Diesel, AT, A/C, PS, PB, PW, PL, C.T,
27,000 miles, Red/Gray, #C441



96 GMC 2500 EXT. CAB
Heavy Duty, Sierra Pkg, 454 Vortec, AT, A/C,
Cruise, 31,000 Miles, Red #G192



96 CHEV TAHOE LT 4X4
4 Door, AT, A/C, PW, PL, T. C, CD Player,
43,000 Miles, Black w/Grey Leather.



95 FORD F250 4X4
Power Stroke Diesel, 5 Spd., AM/FM
Cass., PS, PB, C. T, Dual Tanks, XL Trim,
Power Angle Flow, Dk. Blue, 33,000 Miles



90 FORD F350 4X4 UTILITY DUMP
460 V8, AT, AM/FM, PS, PB, Dual Tanks,
Blue #F734



94 CHEV K3500 4X4 CONTRACTOR
DUMP 6.5 Turbo Diesel, 5-Spd, A/C,
Am/Fm Cass, Class III Hitch, Tool Box,
70,000 Miles, #C451



96 FORD F250 SUPER CAB 4x4
Power Stroke Diesel, XL Trim AT, A/C, 26 000
Miles, Dk. Metallic Green #F702



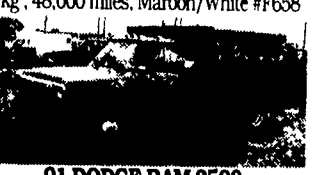
94 CHEV K3500 EXT CAB 4X4
AT, 350, V8, A/C, C.T, Short Bed, Only 37,000
Miles, Dk. Blue, #C463



94 CHEV K3500 EXT. CAB DUALLY
4x4, 6.5 Turbo Diesel, AT, A/C, PW, PL,
Silverado, 69,000 Miles, Red/Silver #C475



93 FORD F350 CREW CAB
DUALLY 4X4
460 V-8, 5 spd., A/C, PS, PB, Centunon
Pkg., 48,000 miles, Maroon/White #F658



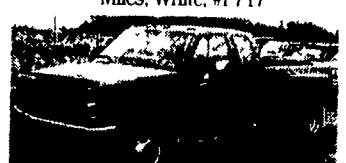
91 DODGE RAM 3500
LANDMASTER UTILITY DUMP
Cummins Turbo Diesel, AT, 64,000
Miles, #D210



94 FORD F350 CREW CAB DUALLY,
7.3 Turbo Diesel AT, A/C, Most Options,
XLT, White, 15 000 Miles



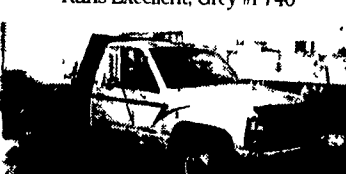
97 FORD F350 CREW CAB 4x4
Power Stroke Diesel, XLT, 5 Spd, AC, PW,
PL, 4 10 LS Rear, Alum Wheels 15,000
Miles, White, #F717



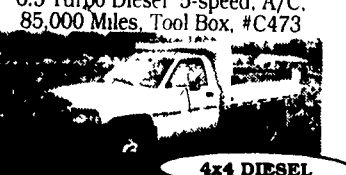
94 GMC 3500 EXT. CAB DUALLY
4x4, 6.5 Turbo Diesel AT, A/C, PW, PL,
Sierra Pkg., 85 000 Miles, Red #G195



91 FORD F350 SUPER CAB DUALLY
460 V8, AT, A/C, Cruise, Hi-Miles But
Runs Excellent, Grey #F740



94 CHEV. 3500 10FT. FLATBED
6.5 Turbo Diesel 5-speed, A/C,
85,000 Miles, Tool Box, #C473



95 DODGE RAM 3500 4x4
Contractor Dump, Cummins Turbo Diesel, Plow,
5-Spd, A/C, AM/FM, 25,000 Miles