

Used 3500 gallon liquid carbonic oxygen tank Was truck mounted Stainless steel inter-shell, \$1,200 OBO. (717)432-3514.

'94 Dodge B350 Maxi Van, 11 pass., 360 auto, PS, PB, cruise, tilt, dual air, AM-FM cassette, 38,000 miles, burgundy, \$11,995. 717-733-2873

'93 Dodge LE 150 Club Cab, 2WD, 360 auto, PS, PB, PW, PDL, cruise, tilt, air, AM-FM cassette, limited slip diff., charcoal & silver w/matching fiber-glass cap, excellent condition, \$10,900. 717-733-2873



**95 CHEV C3500 HD TURBO DIESEL**  
8' Dump Body, AT, 14,000 GVW, 40,125 Miles  
**\$20,995**

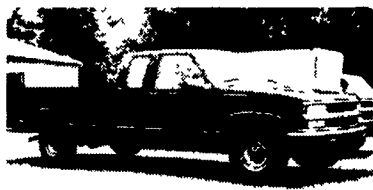


**94 CHEV. K2500 4X4**  
V8, AT, A/C, Bedliner, Cheyenne Pkg., Lond Bed, White only  
**\$11,990**



4111 Pottsville Pike (Rt. 61 North) Reading, PA 19605 **610-921-0261**

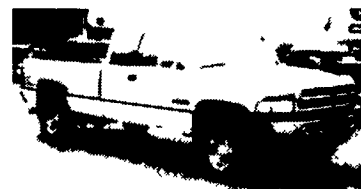
## USED TRUCKS



'96 Chev 3/4 Ton Extended Cab Silverado 350 Vortec Engine AT A/C Loaded AM/FM Cass CD Player 8600 GVW 3.73 Limited Slip Rear 35000 Mi Maroon  
**\$19,900**



'96 GMC 2500 SLE Ext Cab 4x4 6.5 Turbo Diesel AT AC PWDs PDLs AM FM Cass CD Player P Seat P Mirrors Sliding Rear Window 8600 GVW 4.10 Limited Slip Rear 57000 Miles Maroon & Silver  
**\$22,400**

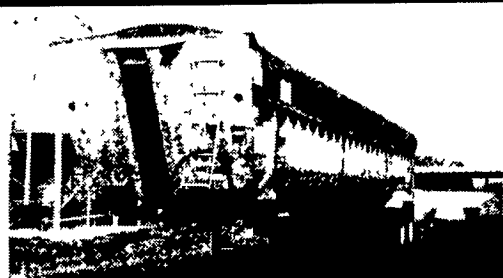


'96 Dodge 2000 SLE Club Cab 4x4 5.9 Cummins Diesel 5 Spd AC PWDs PDLs AM FM Cass P Seat P Mirrors Sliding Rear Window 8800 GVW 4.10 Limited Slip Rear 44000 Miles White & Silver  
**\$24,900**



'93 Chev K3500 Cheyenne Crew Cab Dually 4x4 FI Engine 5 Sp AM/FM 10000 GVW 4.10 Rear Red & Silver 61000 mi  
**\$16,900**

**MARTIN'S AUTO SALES**  
1025 W. Main St. New Holland, PA 17557  
**(717) 656-6621**



**1988 Fruehauf Frameless Dump Trailer,**  
38 footer, new tires, new tarp, new brakes  
**717-597-3614 \$15,000**



**98 Kenworth T-800, Cat 3406 350hp, 9-spd,**  
Airride, wet line, aluminum Budds, new rubber,  
**\$18,500**  
**717/523-9598**

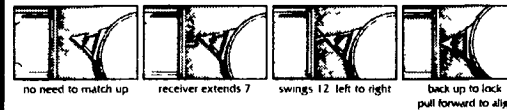
## Quic 'n Easy RECEIVER HITCH BY DMI

The Latest In-Tow-Vation!



- Fits under your truck bumper, mounting directly to your truck frame
- Brings the receiver to your load - extends 7 and swings 12
- Exclusive Proximity Hook up - one person gets it right the first time
- Spring "Cush n" takes the push/pull out of towing lowering stress on the driver and truck drive train
- Tows whatever your truck is rated to tow - exceeds Class IV certification
- Accepts a variety of adapters drawbar ball step up or step down pintle hook and weight distribution system

Never Miss a Hitch Again. **DMI**



**Weaver Distributing**  
**1-800-Weaver-D**

RR2, Box 470, Fredericksburg, PA 17026

### PRE-OWNED CARS

**'95 CADILLAC ELDORADO**  
Loaded

**'96 FORD TAURUS GL**  
A/C A/OC PDL, PW, AM/FM Cass, Power Seats Beautiful Rose

**'96 FORD CONTOUR GL**  
Sdn, A/C, A/OD, AM/FM Cass, 3 to Choose From - Must See

**'96 LINCOLN TOWN CAR**  
Fully Loaded with Luxury 3 to Choose From

**'95 FORD PROBE**  
AC, 5-Spd AM/FM Cass Only 17,000 Miles, Super Clean

**'94 PONTIAC FIREBIRD**  
A/C, AT 1-Owner

**'96 LINCOLN CONTINENTAL**  
Fully Loaded With Sunroof, Luxury, 8 Cyl Fun To Drive, 3 To Choose

### PRE-OWNED TRUCKS

**'97 FORD F350 4X4**  
DRW Dump 10 Box

**'96 FORD RANGER XLT**  
6 Cyl Auto, AM/FM Cass, One Owner, Priced To Sell

**'94 FORD RANGER S/CAB**  
Splash 4x4, Black Beauty

**'97 FORD F150 4X4 XLT**  
V8, A/OD, A/C

**'93 CHEVY S-10**  
Supercab V8, 5 Spd, A/C

**'98 F250 S/CAB 4X4**  
7.3 Diesel, A/OC, AC XLT

**'93 FORD F350 CREW CAB XLT**  
Diesel Turbo, A/OD Lots of Extras, Super Clean

### PRE-OWNED MPV'S

**'96 CHEVY BLAZER LS**  
A/C Auto AM/FM Cass, Local Trade, Sharp!

**'96 WINDSTAR LX**  
A/C, Auto, AM/FM Cass, Super Family Vehicle

**'93 FORD EXPLORER SPORT**  
A/C, Auto, AM/FM Cass, Must See - Super Clean

**'97 EXPEDITION**  
XLT 4.6L, Only 14,000 Miles

**'96 JEEP WRANGLER**  
5 Spd, AM/FM Cass, 4 WD Hard Top, Super Clean, Fun to Drive

**'95 GEO TRACKER 4x4 LSI**  
A/C Auto AM/FM Cass, Convertible, Fun to Drive

**'95 JEEP GRAND CHEROKEE**  
Laredo, A/C Auto AM/FM Cass, 5 To Choose From

## ENGLE-RISSINGER AUTO GROUP

Midway Between Halifax And Millersburg • 717-896-3421 • 1-800-242-8075

HOURS: Monday-Friday 8:30 AM - 8:30 PM; Saturday 8:30 AM - 3:00 PM

## Bergey's EXCELLENCE SINCE 1924

GET MORE TRUCK FOR YOUR BUCK!

1997 VOLVO TRUCK DEALER OF YEAR



24 HOUR ROAD SERVICE & TOWING

- New & Used Truck Sales
- Truck & Trailer Tire Sales/Service
- Contract Maintenance
- Full Service Leasing
- Truck, Reefer, Tractor, Trailer Rentals
- Heavy Duty Frame Straightening
- Heavy Duty Front End Alignment
- Trailer Alignment
- Truck Collision Center
- Truck Body and Paint Center
- Mobile Truck & Trailer Wash
- Computerized Diesel Fuel Center

**\*\* TOLL FREE 1-877-BERGEY3 \*\***

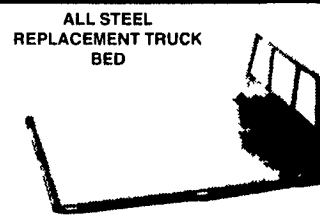
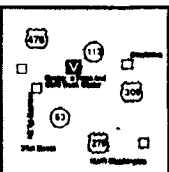
**COME VISIT BERGEY COUNTRY TODAY!**  
Route 113 • Souderton, PA

- Just off Exit 31 of I-476, Rt. 63 West to Rt. 113 North.
- Souderton Exit of Route 309, Rt. 113 South, 3 miles.

SALES HRS:  
M-F 9A to 9P  
Sat. 9A to 4P  
CLOSED SUNDAY

**24 HOUR MONDAY TO SATURDAY**  
**PARTS & SERVICE**

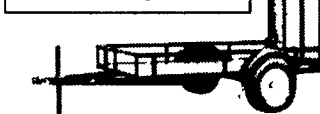
VISIT OUR WEB SITE AT [bergeys.com](http://bergeys.com)



7'X70"W or 80"W  
8 1/2' Lx80"W or 90"W  
10'Lx8"W, 12'Lx8"W

Also Available in 4'x7' and 4'x8'

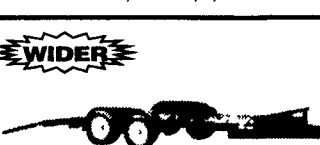
5'x8' Starting at \$650



UTILITY (TILT OR GATE MODEL) SIZES  
5'x8', 5'x10' 2000# GVW - 5'x10'  
6'5"x10', 6'5"x12', 3000# GVW



UTILITY WITH GATE-SIZES  
16'x77", 18'x77", 7,000# GVW



CAR HAULER TRAILER  
16'x78" & 18'x78" includes 5' Beavertail  
7,000 lb GVW 4' self storing ramps

Quality Trailers Built Locally By "PA International"

Car Dollie



Sale \$795

**24' 10-Ton Dually Trailer w/4x4 Axles \$7,500**

**'92 Ford Super Duty XLT w/12' Flatbed \$15,900**

**Used 19' 10-Ton Tri-Axle Trailer \$1,995**

**1990 FORD CONVERSION VAN**

Over 300 Trailers In Stock Starting At \$475.00 T-Plates DEALERS WANTED



Highway Hydraulic Dump

**BRI-MAR**



5'x8', 3000# \$2,150  
5'x8', 5000# \$2,495  
6'x10', 7,000# \$3,195  
6'x10', 10,000# \$3,495  
7'x12', 10,000# \$3,995

FREE BATTERY

LOW PROFILE DUMP TRAILERS

**BRI-MAR**



6'x10' GVW low profile dump trailers w/ landscape gate  
7,000# \$3,495  
10,000# \$3,895

FREE BATTERY

Starting At \$3995 w/4' Adj. Tail



GOOSENECK SIZES: 20'x8' 12,000# or 14,000# GVW, 24'x8' 14,000# GVW

Low Profile construction 16'x77" & 18'x77" 10,000 # GVW



DECK-OVER CONSTRUCTION 14'x7' With Tail, 3000# or 4000# GVW 16'x8' With Tail, 7000# GVW 20'x8' w/Tail 10,000# GVW \$3,295

**KUTZ FARM EQUIPMENT, INC.**

Pine Grove, PA (717) 345-4882

FAX 717 345 2881

8 AM-5 PM Monday To Friday

8 AM-12 Saturday Or By Appointment