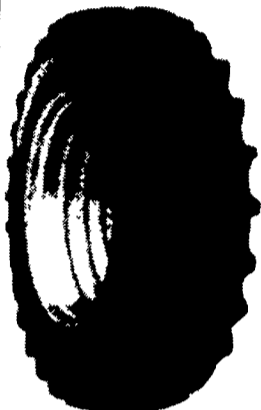


SUMMER SAVINGS

Firestone

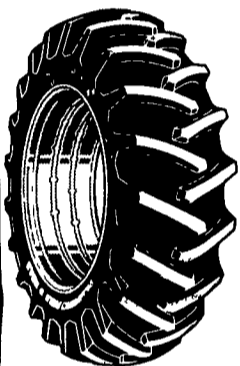
FARM HARVEST

S P E C T A C L S



Firestone RADIAL ALL TRACTION 23°

SIZE	PLY	PRICE
18.4R34	★	\$550.00
20.8R34	★	\$800.00
16.9R38	★ ★	\$635.00
18.4R38	★	\$570.00
18.4R38	★ ★	\$640.00
20.8R38	★	\$740.00
20.8R38	★ ★	\$890.00
18.4R42	★ ★	\$719.00
20.8R42	★ ★	\$890.00



Firestone TRACTION FIELD & ROAD

SIZE	PLY	PRICE
8.3-24	4 Ply	\$109.00
11.2-24	4 Ply	\$139.00
12.4-28	4 Ply	\$169.00
14.9-28	6 Ply	\$249.00
15.5-38	6 Ply	\$259.00
18.4-38	6 Ply	\$379.00
18.4-38	8 Ply	\$425.00
20.8-38	8 Ply	\$520.00

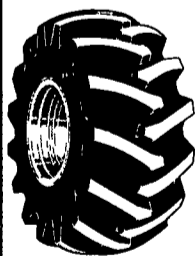
Firestone 3 RIB CHAMPION GUIDE GRIP™

SIZE	PLY	PRICE
4.00-12	4 Ply	\$31.00
5.50-16	6 Ply	\$41.00
6.00-16	6 Ply	\$44.00
6.50-16	6 Ply	\$46.00
7.50-16	6 Ply	\$56.00
10.00-16	8 Ply	\$92.00
11.00-16	8 Ply	\$105.00



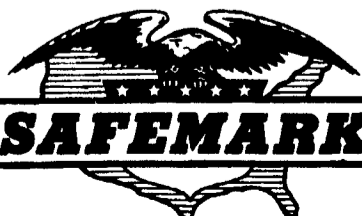
Firestone ALL TRACTION UTILITY Rear Backhoe

SIZE	PLY	PRICE
14 9-24	8 Ply	\$235.00
16 9-24	8 Ply	\$290.00
16 9-24	10 Ply	\$325.00
17 5L24	8 Ply	\$280.00
17 5L24	10 Ply	\$315.00
19.5L24	10 Ply	\$440.00
21L24	10 Ply	\$570.00
21L24	12 Ply	\$580.00
16 9-28	8 Ply	\$275.00
18 4-28	10 Ply	\$450.00



Firestone FORESTRY SPECIAL

SIZE	PLY	PRICE
18.4-26	10 Ply	\$849.00
23.1-26	10 Ply	\$1,300.00
23.1-26	14 Ply	\$1,600.00
28L26	12 Ply	\$1,400.00
28L26	14 Ply	\$1,700.00
16.9-30	10 Ply	\$840.00
24 5-32	16 Ply	\$1,800.00
30.5L32	12 Ply	\$2,000.00
30.5L32	16 Ply	\$2,350.00
18.4-34	10 Ply	\$1,000.00

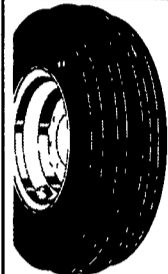


Camp Hill, PA 17011

CALL 1-800-PFB-TIRE For Dealer Nearest You

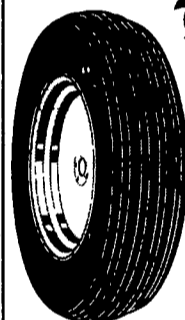
- QUALITY
- SERVICE

- DEPENDABILITY
- ECONOMY



Firestone 4 RIB CHAMPION GUIDE GRIP™

SIZE	PLY	PRICE
9.5L15	6 Ply	\$69.00
11L15	8 Ply	\$86.00
6.00-16	6 Ply	\$43.00
6.50-16	6 Ply	\$52.00
7.50-16	8 Ply	\$68.00
10.00-16	8 Ply	\$84.00
11.00-16	8 Ply	\$105.00



Firestone RIB IMPLEMENT™

SIZE	PLY	PRICE
9.5L14	8 Ply	\$51.00
9.5L15	8 Ply	\$45.00
11L15	8 Ply	\$46.00
12.5L15	8 Ply	\$69.00
12.5L15	10 Ply	\$71.00



PARTICIPATING DEALERS

ADAMS
Biglerville Tire & Auto
Biglerville, PA 17307
717-677-8338

INDIANA
Allegheny Farm Service
Marion Center, PA
15370
412-397-2660

BLAIR
Rhodes Farm Supply
Williamsburg, PA
16693
814-832-2491

LANCASTER
Leola Tire Service
Leola, PA 17540
717-656-2574

BRADFORD/SULLIVAN
Fulmer Bros Tire
Service
Wysox, PA 18859
717-265-6159

LEBANON
Lebanon Valley
Implement, Inc
Richland, PA 17087
717-866-7518

Histand's Farm &
Home Service
Rome, PA 18837
717-744-2371

LEHIGH
Joe's Battery & Tire
Allentown, PA 18103
610-437-4961

BERKS
Kantner's Tire Service
Shoemakersville, PA
19555
610-562-2567

NORTHUMBERLAND
Rovendale Supply
Watsonstown, PA 17777
717-538-5521 or
717-742-7521

BUCKS
Miller Tire & Auto
Blooming Glen, PA
18911
215-257-4307
1-800-891-0059

PERRY
Smith Farm &
Equipment
Newport, PA 17074
717-567-3562

CAMBRIA
Al's Tire of Barnesboro
Barnesboro, PA 15714
814-948-7880

SCHUYLKILL
Charles Snyder, Inc
Tamaqua, PA 18252
717-386-5945

CENTRE
Dunkle & Grieb
Centre Hall, PA 16828
814-364-1421

UNION
Mifflinburg Farm
Supply Inc
Mifflinburg, PA 17844
717-966-3114/3115

CHESTER/DELAWARE
S G Lewis & Sons
West Grove, PA 19390
610-869-2214

Allen Hoover
Mifflinburg, PA 17844
717-966-3821

Stolzfus Farm Service
Cochranville, PA 19330
610-593-2407/2408

WESTMORELAND
J&M Machinery Co
Greensburg, PA 15601
412-668-7850

COLUMBIA
Steve Shannon
Tire Co., Inc
Bloomsburg, PA 17815
800-343-TIRE

YORK
Wagner's Mobile Repair
Shrewsburg, PA 17361
717-235-5094

Steve Shannon
Tire Co., Inc
Route 487
Benton, PA 17814
717-925-2821

NEW JERSEY
Farmers Brokerage &
Supply
Allentown NJ 08501
609-259-7324

CUMBERLAND
Barrick Tire Sales
Newville, PA 17241
717-776-5762

Tire King
Sussex NJ 07481
201-875-5250

DAUPHIN
Lapp's Tire Service
Halifax, PA 17152
717-362-3115

MARYLAND
Rigdon Tire Service
Street MD 21154
410-452-5979

Firestone

F A R M T I R E S
THE LEADER IN THE FIELD