

Dairy and Livestock Sales

SHORT NOTICE DRIVING HORSE SALE



6:00 P.M.



6:00 P.M.

FRI. EVE. JULY 17, 1998

Directions: 340 West Of Intercourse To Old Leacock Rd. Turn Left To Irishtown Rd. Turn Right To Sale On Left!

6:00 P.M. Hitch - 7:30 P.M. Sale
Approximately 50 Head

From Delaware, Ohio and New York

- 6 yr. old Royal Prestige • 4 yr. old Brisco Hanover
- 5 yr. old Dabindadan (fancy trotter) son of Speedy Somoli • 9 yr. old Balanced Image
- 4 yr. old Jerky Hanover • 11 yr. old Jazz Cosmos
- 10 yr. old Prakas • 6 yr. old Billy Dart
- 8 yr. old Brittiney Bay • 5 yr. old Arnies Exchange

All these horses are trotters and most of them have white markings! Top standardbred horses. Don't Miss Sale!

If you are in need of a horse, come and find that special horse. To hitch horses before the sale, Call Elam B. Stoltzfus at 768-8690

Sale Held For:

Elam B. Stoltzfus, 3066 Irishtown Rd., Ronks, PA 17572

Cash or Honorable PA Check Only
All Announcements Sale Day Take Precedence Over All Advertising.
Not Responsible for Accidents
Food on Premises

Auctioneer: Mel Hoover
AU-003111-L

717-354-8397 Home or 717-354-6431 Barn

Public Auction Register

Closing Date Monday 5:00 P.M.

of each week's publication

Internet Sale Register will be updated every Sat. at 2:23 P.M.

WED OCT 21 - 10AM Wolgemuth Auction, 109 N Maple Ave, Leola, Lanc Co, PA Wolgemuth Hay Sale Dennis Wolgemuth, Auct

WED OCT 21 & THURS OCT 22 - 8 30AM 5174 Horst Rd, Chambersburg, PA Lawn & garden, misc (Wed), farm machinery & tractors (Thurs) Marion Auction Service, 717-375-4700

FRI OCT 23 - 1PM 548 Alexander Spring Rd, Carlisle, PA State graded feeder pig sale Carlisle Livestock Market, Inc, 717-249-4511

FRI OCT 23 - 6PM New Holland Sales Stables, Inc, 101 W Fulton St, New Holland, Lanc Co, PA Feeder Cattle Sale 717-354-4341

FRI OCT 23 and SAT OCT 24 - Farmersville Auction Grounds Support for Prison Ministries 15th Annual Fund Raising Auction

SAT OCT 24 - Morgantown, Pa Caernarvon Farms Complete Dispersal, Holsteins By Andy Stoltzfus The Cattle Exchange

SAT OCT 24 - 10 30AM Mel's Stables, 834 Wallace Rd, New Holland, Lanc Co, PA Horse Sale Mel Hoover, Auct 717-354-8397

MON OCT 26 - 10AM 100 W Jackson St, New Holland, Lanc Co, Pa Hay, grain & straw auction A & C Diefenbach Auction, Inc

WED OCT 28 - 109 N Maple Ave, Leola, Lanc Co, PA Farm Equipment Auction Wolgemuth Auction, 717-656-2947

WED OCT 28 - 180 Glick Rd, Narvon, PA 52 Acre farm & personal property By Alvin W & Edna M Ringler Kline, Kraeder & Good, Aucts

WED OCT 28 - 10AM New Holland Sales Stables, Inc, 101 W Fulton St, New Holland, Lanc Co, PA Dairy Sale & Sale 717-354-4341

WED OCT 28 - 10AM Wolgemuth Auction, 109 N Maple Ave, Leola, Lanc Co, PA Wolgemuth Hay Sale Dennis Wolgemuth Auct

FRI OCT 30 - 7PM Fingertakes Livestock Exc, 3865 Rt 5&20, Canandaigua, NY Feeder Cattle Sale 716-394-1515

SAT OCT 31 - 8 30AM - Tack 11AM Horse Sale Middleburg Lvtst Auct Sis Inc, Middleburg, PA Clarence Shirk & John Shirk, Owners 717-837-2222

NOVEMBER

MON NOV 2 - 10AM 100 W Jackson St, New Holland, Lanc Co, Pa Hay, grain & straw auction A & C Diefenbach Auction, Inc

TUES NOV 3 - 548 Alexander Spring Rd, Carlisle, PA Fed Cattle Sale Carlisle Livestock Market, Inc, 717-249-4511

TUES NOV 3 - Rogers Comm Auct, 20 mi S of Youngstown, OH on St Rt 7, to Rogers, OH, 1 mi W on SR 154 to auction Equipment Consign Auct, lawn & garden, firewood, lumber & more Rogers Community Auction, Inc 330-227-3236

TUES NOV 3 - 7 30PM 548 Alexander Spring Rd Carlisle, PA Feeder cattle sale Carlisle Livestock Market, Inc 717-249-4511

WED NOV 4 - 109 N Maple Ave, Leola, Lanc Co, PA Lumber & Building Materials Sale Wolgemuth Auction, 717-656-2947

WED NOV 4 - 10AM Wolgemuth Auction, 109 N Maple Ave, Leola, Lanc Co, PA Wolgemuth Hay Sale Dennis Wolgemuth, Auct

WED NOV 4 - 6 30PM 100 W Jackson St, New Holland, Lanc Co, Pa Winross, Hess, farm & toys A&C Diefenbach Auction Inc

THURS NOV 5 - Chambersburg, PA Riscroft Holsteins The Cattle Exchange, 607-746-2226

FRI NOV 6 - 6PM Belleville Livestock Market, Belleville, PA Fall Heifer Sale For more info Gene Glick, 717-667-2703 or Sale Barn, 717-935-2146

FRI NOV 6 - 7PM New Holland Sales Stables, Inc, 101 W Fulton St, New Holland, Lanc Co, PA Horse Sale 717-354-4341

FRI NOV 6 - 7PM Middleburg Lvtst Auct Sis Inc, Middleburg, PA Graded Feeder Sale Clarence Shirk & John Shirk, Owners, 717-837-2222

SAT NOV 7 - Ithaca, NY New York Holstein Harvest Sale The Cattle Exchange, 607-746-2226

SAT NOV 7 - 10 30AM Mel's Stables, 834 Wallace Rd, New Holland, Lanc Co, PA Horse Sale Mel Hoover, Auct 717 354-8397

MON NOV 9 - 710 Schoeneck Rd, Ephrata, Lanc Co PA Real estate, 91 acre limestone farm w/limestone house By Pennfield Corp Aaron E. Martin, Auct 717-733-3511

MON NOV 9 - 10AM 100 W Jackson St, New Holland Lanc Co, Pa Hay, grain & straw auction A & C Diefenbach Auction Inc

WED NOV 11 - 10AM Wolgemuth Auction 109 N Maple Ave Leola, Lanc Co PA Wolgemuth Hay Sale Dennis Wolgemuth, Auct

FRI NOV 13 - 9AM 100W Jackson St New Holland Lanc Co Pa Tractors, farm equip & supplies A&C Diefenbach Auction Inc

FRI NOV 13 - 12 Noon Middleburg Livestock Auct Sis Inc Middleburg PA Dairy Sale Clarence Shirk & John Shirk Owners 717 837-2222

FRI NOV 13 1PM 548 Alexander Spring Rd Carlisle, PA State graded feeder pig sale Carlisle Livestock Market Inc 717-249-4511

Complete Milking Herd Dispersal Belleville Livestock Market WED., JULY 15, 1998

at 1:30 pm
100 Holsteins

We will be offering for sale on consignment the complete herd from Bergson Dairy Farm of Tioga County. Cows consist of approximately 30 head fresh in the last 60 days and about 25 Dry or springing cows with the rest in various stages of lactation. This herd has been culled hard and is ready to go home and work Cows will all be pregnancy checked.

For more info:
Gene Glick (717) 667-2703
Sale Barn (717) 935-2146
Mark Glick, Auct AU-349L

MABEL KELLER ESTATE PUBLIC AUCTION

Saturday, July 18, 1998 9:00 AM

2 COUNTRY PROPERTIES
ANTIQUES - HOUSEHOLD GOODS - TOOLS

RD #1, BOX 236

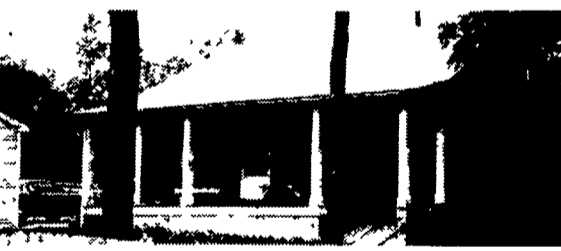
SHEEP HILL ROAD, NEWMANSTOWN, HEIDELBERG TWP, LEBANON COUNTY, PA

DIRECTIONS: At the square in Schaefferstown go south on Market Street for 2 blocks to the fountain then turn left onto Sheep Hill Road, travel 1.8 miles on Sheep Hill Road, properties on left - see signs. Simply follow auction arrows the day of auction.

PROPERTY #1 Consists of a 10 acre more or less farmette with 2 5 story frame turn of the century farmhouse with tin shingle roof, kitchen, out kitchen, foyer, living room, den and bath on the first floor. 3 bedrooms on the second floor. Oil hot water heat, attic and basement. 2 story frame barn with tin roof, 1 car block garage, corn cribs, cropland, pasture land and woods. Property #1 is further described in Deed Book 83 Page 737 and Deed Book 7d page 260 and 261 tracts #1 and #2 in the Lebanon County Recorder of Deeds office.



PROPERTY #2 Consists of a 28' x 30' 1.5 story 29 year old brick home with 6' x 30' enclosed porch and 6' x 30' open porch. The first floor has eat-in-kitchen, living room, 2 bedrooms and a bath. The second floor has 2 rooms. Cement basement, electric heat, 3 car detached 24' x 40' garage, garden shed. There is also an 8' x 40' older mobile home on property #2. Lot size 115' x 383' or 1.05 acres Property #2 is further described in Deed Book 9U Page 402 in the Lebanon County Recorder of Deeds office **OPEN HOUSE OF REAL ESTATE - JUNE 20TH, 1998 FROM 12 TO 3 PM** or by appointment - call Auctioneer.



TERMS: 10% down the day of the auction, balance due on or before 60 days

REAL ESTATE SELLING AT 12:00 NOON.

ANTIQUES - Four blanket chests, one nicely grained. 4 decorated plank seat rockers, painted Victorian bedroom suite; oak dressers; oak extension table, set of decorated plant seat chairs; one drawer stands, 2 milk cupboards, woodbox; child's rocker and chairs; Empire bureau, depression bedroom suite, gold leaf mirror, case seat rocker; wicker plant stand, oak drop lid desk; hanging oak wall cabinet; doll cradle; sleds; wood chest; cookstove, nice kitchen cabinet; 5 pc. Late Victorian parlor suite; porch swing; Victorian tables; library tables, early sheet metal car; whirly-gig; pitcher pump; oak mantle clock, hay rakes; floor lamps; kerosene lamps; depression glass; copper wash boilers; milk bottles; rag doll; Christmas ornaments; linens; stoneware crocks. **SPECIAL MENTION:** Wisconsin 4 cycle electric generator; wooden smokehouse on sandstone foundation; sandstone water trough; Gibson electric range (like new); 8 speed wheelhorse riding mower; heatrola; washer and dryer, power mower; garden tools; hand tools; aluminum extension ladder, electric fans; cookware; hundreds of household goods. **GUNS** .32 cal. Remington single shot rifle, Hopkins and Allen 12 ga. Double barrel shotgun.

CONDITIONS BY: Hilda Stickler, Elizabeth Moyer, Co-Exec.

FOOD STAND

ATTORNEY: Kenneth Sandoe, Esquire

AUCTION CONDUCTED BY:
NELSON L. EBERSOLE AUCTIONEER
LICENSE# - AU-001307-L
PHONE (717) 867-5221 FAX (717) 867-5606
30 WEST MAIN STREET
ANNVILLE, PA 17003

Horse Consignment Auction

Sat., Aug. 1st, 1998
At 10:00 AM.

Miller's Auction Ctr.

Bethel, PA. Exit #3. Of I-78

We Are Looking For Horses; Ponies;
Tack; Horse Drawn Equip.
Anything To Do With Horses.
To Consign To This Auction Call
(717) 933-5736

Rates: 5% On Horses 3% Over \$1500.00 \$10.00
Buy Back. Based On Per Item.

All Tack 10% Horse Drawn Equip. 10%

Rec. Time Will Be Fri. July 31 3 PM to 8 PM. &
Sat. Aug. 1st 7AM to 10 AM. Call Us To
Consign.

Auctioneer:
Dwight D. Miller AU002414-L
Bethel, PA 19507
(717) 933-5736



DAIRY CATTLE SALE

Wed. Eve.
July 15, 1998
7:15 p.m.

Local consignments
of Fresh Cows,
Springers, Bred
Heifers, Service Bulls
and Small Heifers

**FOUR STATES
LIVESTOCK
SALES**

Hagerstown, MD
301-733-8120

SHORT NOTICE SALE!!! Registered & Grade Holstein Complete Milking HERD DISPERSAL

* Over 18,000 lb. Herd Ave. * Ave. 65 lbs. Per Day
* Lot of Summer & Fall Cows * Tie Stall Barn

More Details With Time & Date Next Week

Mel Hoover - Auctioneer AU003111-L

Sale Managed By
SMOKETOWN QUALITY DAIRY SALES
Gordon & Helen Fritz
717-393-0930