

**New Wilmington Graded Feeder Pig Sale**  
New Wilmington, PA  
July 3, 1998

271 FEEDER PIGS. 48.0 LBS. PER PIG; 63.03 PER HUNDREDWEIGHT; 30.16 PER HEAD.  
US#1-2: 52 HEAD 35-50 LBS. 60.00-90.00; 45 HEAD 50-60 LBS. 55.00-62.50.  
US#2: 29 HEAD 30-40 LBS. 55.00-67.50; 41 HEAD 40-50 LBS. 60.00-90.00; 6 HEAD 50-60 LBS. 57.50-60.00; 12 HEAD 60-70 LBS. 50.00-52.50; 8 HEAD 70-80 LBS. 45.00-46.00; 4 HEAD 100-105 LBS. 40.00.  
US#2-3: 19 HEAD 30-40 LBS. 50.00-62.50; 11 HEAD 40-50 LBS. 57.50-62.50; 9 HEAD 50-60 LBS. 47.50-55.00; 4 HEAD 60-70 LBS. 47.50-50.00.

**Lancaster Hogs**

Lancaster Stockyards  
Wednesday, July 8, 1998  
Report supplied by USDA  
HOG MARKET TODAY 656 HEAD; LAST WEDNESDAY 595; LAST YEAR 840.  
BARROWS AND GILTS: COMPARED TO LAST WED., PRICES WERE 1.50 LOWER.  
49-54 PERCENT LEAN: 240-260 LBS. 38.00-39.00; 45-54 PERCENT LEAN 220-250 LBS. 37.00-38.00.

**New Holland Feeder Pigs**

New Holland, PA  
Wed., July 8, 1998  
Report supplied by USDA  
TODAY 716 HEAD  
LAST WEDNESDAY 654  
LAST YEAR 546  
TREND: COMPARED TO LAST WED., FEEDER PIGS SOLD 8.00 TO MOSTLY 10.00 LOWER. DEPRESSED SLAUGHTER HOG PRICES CONTINUED TO TAKE THEIR TOLL ON THE FEEDER PIG MARKET. COMPETITION WAS ALSO LIGHT FROM PACKERS WITH ONLY 26 PERCENT BEING SOLD FOR SLAUGHTER. ALL PIGS WEIGHED ON ARRIVAL AND SOLD BY THE HUNDREDWEIGHT.  
US#1-2: 31 HEAD 30-35 LBS. 56.00-60.00; 76 HEAD 35-40 LBS. 36.00-46.00; 215 HEAD 40-50 LBS. 37.00-48.00; 32 PKG. 52 LBS. 37.00; 106 HEAD 50-60 LBS. 40.00-62.00; 36 HEAD 60-65 LBS. 36.00-38.00.  
US#2 20 HEAD 30-40 LBS. 36.00-41.00.  
SLAUGHTER: 83 HEAD 20-35 LBS. 60.00-95.00; 14 HEAD 35-40 LBS. 30.00-34.00; AS IS 81 HEAD 15-75 LBS. 4.00-25.00.  
ALL PIGS CONSIGNED TO WED. FEEDER PIG SALE MUST ORIGINATE FROM A QUALIFIED NEGATIVE OR MONITORED HERD.

**Indiana Hogs**

Springfield, IL  
Thu Jul 09, 1998  
USDA-IL Dept Ag Market News  
Indiana-Ohio Direct Hog Mid-Session  
Indiana-Ohio Direct Receipts: Wednesday's actual 34,100 Week to date 122,900 Today's estimate 32,500 Same pd. week ago 119,900 Thursday A week ago 25,300 Same pd. year ago 115,000 Thursday A year ago 27,500  
Barrows and Gilts: 1.00-1.50 lower. Demand and movement light to moderate. Country: Plants: US 1-2 230-260 lbs. 36.50-38.00 Few 36.00 37.00-39.00 Few 39.50 US 2-3 230-260 lbs. 33.50-36.50 210-230 lbs. 29.50-33.50  
Sows: Steady.  
US 1-3 300-400 lbs. 22.50-24.00 400-500 lbs. 24.00-26.00 500-600 lbs. 26.00-28.00 Few over 600 lbs. 29.00-30.50  
Boars: over 300 lbs. 15.00-17.00 under 300 lbs. 19.00-23.00

**New Holland Hogs**

NEW HOLLAND, PA  
MON JULY 6, 1998  
USDA-PA Dept Ag Market News  
NEW HOLLAND HOG AUCTION FOR MONDAY JULY 6, 1998  
HOG RECEIPTS TODAY 851 LAST MONDAY 1280 LAST YEAR 741  
BARROWS AND GILTS: Compared to last Monday's auction, prices were 2.00-3.00 lower. 49-54 percent lean: 220-275 lbs 38.00-39.00 few up to: 41.25 45-50 percent lean: 240-280 lbs 36.50-38.00 40-45 percent lean: 275-310 lbs 34.00-36.50 310-350 lbs 31.00-34.00  
SOWS: Steady to 1.00 lower. US 1-3: 300-500 lbs 23.00-26.00 500-650 lbs 25.00-28.50  
BOARS: 300-700 lbs 15.00-16.25 200-300 lbs 21.00-23.00

**Dewart Hay & Livestock**

Dewart, Pa.  
Monday, July 6, 1998  
Report Supplied by Auction  
STEBERS: TOO FEW TO QUOTE.  
HEIFERS: TOO FEW TO QUOTE.  
GOOD COWS: 35.00-41.50.  
CANNERS AND CUTTERS 25.00-35.00.  
BULLS: 43.00-47.50.  
VEAL 130-190 LBS. 85.00-155.00, 90-130 LBS. 25.00-85.00.  
HOGS: TOO FEW TO QUOTE.  
SOWS: 20.00-28.00.  
FEEDER PIGS: 15.00-30.00 HEAD.  
HAY: 3 LOADS, 40.00-65.00.  
STRAW: 1 LOAD AT 72.50.  
CORN: 3 LOADS, 85.00-95.00.  
OATS: 1.50-1.80 BU.

**Diffenbach Auction Center**

New Holland, Pa.  
Monday, July 6, 1998  
Report Supplied by Auction  
TOTAL LOADS: 66.  
ALFALFA: 60.00-190.00.  
MIXED HAY: 55.00-195.00.  
TIMOTHY: 75.00-155.00.  
ORCHARDGRASS: 85.00-92.00.  
STRAW: 87.00-175.00.  
EAR CORN: 90.00-94.00.  
FIREWOOD: 20.00.

**Middleburg Grain & Hay Auction**

Middleburg, Pa.  
Tuesday July 7, 1998  
Report Supplied by PDA  
16 LOADS OF HAY; 38 LOADS TOTAL.  
ALFALFA: 4 LOTS, 110.00-135.00.  
MIXED HAY: 9 LOTS, 72.50-115.00.  
TIMOTHY: 1 AT 115.00, 25.00 ROUND BALE.  
ORCHARDGRASS: 1 AT 55.00.  
STRAW: 3 LOTS, 70.00-112.50.  
EAR CORN: 12 LOTS, 60.00-97.50.  
OATS: 7 LOTS, 1.60-2.05 BU.

**Green Dragon**

July 3, 1998  
Hay, Straw & Grain  
Report Supplied by Auction  
TOTAL LOADS: 27.  
MIXED HAY: 12 LOTS, 75.00-177.00.  
ALFALFA: 1 LOT AT 145.00.  
TIMOTHY: 4 LOTS, 90.00-160.00.  
STRAW: 2 LOTS, 95.00 AND 107.00.  
EAR CORN: 5 LOTS, 85.00-93.00.  
ORCHARDGRASS: 1 LOT AT 140.00.  
OATS: 1 LOT AT 2.35 BU.

**Leinbach's Hay**

Shippensburg, PA  
July 4 and 7  
Report Supplied by Auction  
37 LOADS.  
ALFALFA: 65.00-120.00.  
MIXED HAY: 40.00-125.00.  
TIMOTHY: 59.00-94.00.  
BROMEGRASS: 55.00-67.50.  
ORCHARDGRASS: 53.00-55.00.  
STRAW: 60.00-85.00.  
EAR CORN: 80.00-85.00.  
OATS: 2.90 BU.

**Morrison's Cove Auction Hay**

Morrison's Cove  
Report Supplied by Auction  
July 6  
ALFALFA: 165.00.  
TIMOTHY: 115.00-130.00.  
MIXED HAY: 40.00-120.00.  
STRAW: 85.00-92.50.  
CORN: 78.00.  
AUCTION HELD MONDAY AT 12:30 P.M.

**North Jersey Market**

Hackettstown, N.J.  
Report Supplied by Auction  
Tuesday, July 7, 1998  
Hay—Straw & Grain Report  
ALFALFA: 2 LOTS, 2.10 AND 4.50 BALE.  
MIXED HAY: 21 LOTS, 1.00-4.00 BALE.  
TIMOTHY: 4 LOTS, 1.25-1.50 BALE.  
GRASS: 7 LOTS, 1.35-2.00 BALE.  
RYE STRAW: 1 LOT AT 2.10.  
SHELLED CORN: 1 LOT AT 6.50 BAG.  
OATS: 2 LOTS, 2.50 AND 5.25 BAG.  
WHEAT: 1 LOT AT 2.40 BAG.  
39 LOTS TOTAL.

**Westminster Hay**

Westminster, Md.  
Tuesday, July 7, 1998  
Report Supplied by Auction  
144 LOTS.  
ALFALFA: 3.00-4.30 BALE.  
TIMOTHY: 1.00-2.70 BALE.  
MIXED HAY: 70-3.10 BALE.  
GRASS: .75-1.60 BALE, 7.00-22.00 LARGE ROUND.  
STRAW: 40-2.10 BALE.  
MULCH: .10-.65 BALE.

**Vintage Hay**

Paradise, PA  
Thurs., July 9, 1998  
Report Supplied by Auction  
ALFALFA: 113.00-156.00.  
TIMOTHY: 100.00-131.00.  
MIXED HAY: 90.00-114.00.  
STRAW: 74.00-110.00.  
SALE TIME 12 NOON.

**Hay Market Summary**

July 6, 1998  
Eastern Pa.  
HAY & STRAW MARKET FOR EASTERN PA - (ALL HAY GOOD GRADE AND BETTER. PRICES PAID BY DEALERS AT THE FARM & PER TON.) HAY AND STRAW STEADY TO WEAK, EXCEPT ALFALFA IS STEADY TO STRONG.  
ALFALFA 85.00-120.00; MIXED HAY 70.00-90.00, FEW TO 120.00; TIMOTHY 70.00-90.00, FEW TO 125.00; STRAW 50.00-80.00, FEW 40.00; MULCH 25.00-45.00.  
SUMMARY OF LANCASTER CO. HAY AUCTIONS FOR WEEK ENDING 07/03/98. PRICES PER TON: LOADS: 99 HAY, 32 STRAW & 16 EAR CORN. ALFALFA 125.00-155.00; MIXED HAY 70.00-157.00; TIMOTHY 70.00-167.00; STRAW 82.00-100.00; EAR CORN 85.00-94.00.  
SUMMARY OF CENTRAL PA HAY AUCTIONS FOR WEEK ENDING 07/03/98. PRICES PER TON: LOADS: 68 HAY, 14 STRAW & 30 EAR CORN. MIXED HAY 60.00-130.00; STRAW 57.50-115.00; STRAW 70.00-97.50; EAR CORN 80.00-95.00.

**Kirkwood Hay Auction**

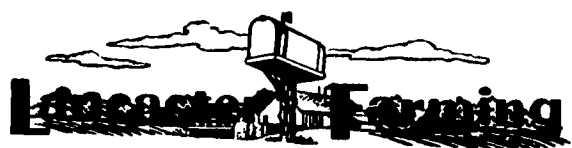
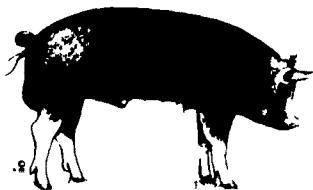
Kirkwood, Pa.  
Tuesday, July 7, 1998  
Report Supplied by Auction  
23 LOADS OF HAY.  
MIXED HAY: 1ST CUTTING 80.00-121.00, 2ND CUTTING 90.00-113.00.  
TIMOTHY: 106.00.  
ALFALFA: 1ST CUTTING 165.00-167.00, 2ND CUTTING 89.00-119.00  
CLOVER: 66.00.  
GRASS: 42.00-118.00.  
WHEAT STRAW: 84.00-119.00.  
SALE DAYS TUESDAYS, 11 A.M.

**Wolgemuth Hay**

Leola, Pa.  
Wed., July 8, 1998  
Report Supplied by Auction  
TOTAL LOADS: 24.  
ALFALFA: 85.00 AND 125.00.  
STRAW: 65.00-125.00.  
TIMOTHY: 70.00.  
MIXED HAY: 55.00-165.00.  
CORN: 85.00 AND 92.50.  
OATS: 1.50 BU.



Where's your mustache?™



INDEX  
Five Sections

<b>COLUMNS</b>	<b>HOME AND YOUTH</b>
Now is the Time..... A10	4-H Happenings.....B3,11,16,19
Direct Marketing..... A36	Home On The Range.....B 6
Ag Insights..... A36	Cook's Question Corner.....B 8
Taking Time.....B 3	Kids Korner.....B10
On Being A Farm Wife.....B 4	Homestead Notes.....B12
Consuming Thoughts.....B 5	Farm Women Societies.....B14
All Gardens.....B11	You Ask, You Answer.....B22
Family Living Focus.....B15	
Ida's Notebook.....B18	
Poultry Pointers.....C44	
<b>DEPARTMENTS</b>	<b>FEATURES</b>
Editorial..... A10	Pa. Holstein Youth..... A20
Farm Calendar..... A10	Schnecksville Fair..... A24
Futures..... A16	Blue Mold Report..... A36
Mailbox Markets.....B20, D 2	Goat Milk.....B13
Public Auction Register.....B30	Dairy Collectibles.....B14
Sale Reports.....B26	
Business News.....C 3	<b>DAIRY</b>
Classified Ads.....C 5, D 9	Lancaster DHIA..... A30
	Dairy Farm Management.... A37

**PENNFIELD GRAIN BANK**

Prices Week Of 7/13/98

Corn \$2.81 Bu  
Soybeans \$6.72 Bu  
Barley \$1.55 Bu

- Use Grain 'Same As Cash'
- Prices Updated Weekly
- Grain Back-Hauling
- No Storage Charges When Applied To Feed Purchases
- Yearly Statement of Grain Transactions Available

CUSTOMER SERVICE DEPT  
OPEN 24 HOURS

1-800-995-0333  
pennfield feeds

HERE TODAY • HERE TO STAY  
For Buying or Selling Livestock  
Call Dunlaps at (717) 397-5136

Slaughter Cattle  
Every Monday 9:30 AM

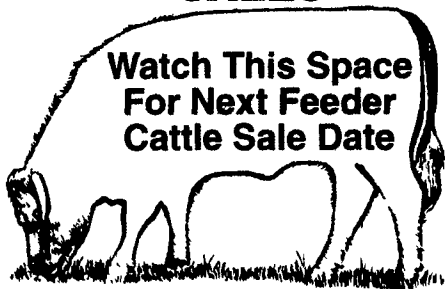
Feeder Cattle  
Sold in Conjunction with  
Monday Receipts

Receiving  
Market Hogs  
Wednesday  
6:30 AM To 11:30 AM

Sheep & Goats  
Auction Back  
By Popular Demand  
call Jim Hunsicker

**SPECIAL FEEDER CATTLE SALES**

Watch This Space  
For Next Feeder  
Cattle Sale Date



Consignments welcome  
Call Butch Brown  
or Leon Hoover

**Walter M. Dunlap and Sons**  
LANCASTER STOCKYARDS

An Old Line Commission Firm Dedicated to  
Livestock Marketing for the 21st Century!