

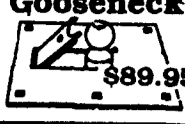
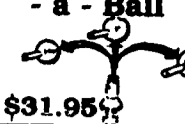


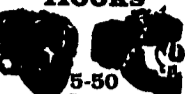



Warehouse Direct To Your Door!

Free UPS
OVERSEAS

Trailer Hitches 	Brake Controls \$59.95 	Fold-down Gooseneck \$89.95 	Convert - a - Ball \$31.95 
Ball Mounts \$12.95 	"PLUG-IN" Simple Wiring Hook 	Pintle Hooks 5-50 Tons 	Elec. Plugs & Adapters 

WEAVER DISTRIBUTING 1-800-WEAVER-D Free Catalog
 RR2 Fredericksburg, PA 17026 1-800-932-8373

1979 Ford 7000 tractor, SA, factory rebuilt 3208 Cat, 5+2, (610)444-1651.

1979 Ford 9000 Louisville single ax. tractor, excellent cond. would make nice dump truck \$6250 OBO 717/683-6004.

1980 IH S Model 1800 truck, w/20' steel flatbed, DT466 engine, 25,000 GVW, 5-speed trans, new rear brakes & wheel cylinders, good condition, \$5750. 717-587-1725 Lackawanna Co.

1982 GMC 7000 Series, 21,000lb GVW, 5-spd, 350 C.I., 12' dump stake body, \$3200 OBO. 610/282-4784 ask for Tom.

One stahl utility body, 9' for 1 ton truck, like new. \$2750 717-222-9090.

Truck cap "Snug Top" fiberglass w/slider window & lights, \$875 OBO. 410/343-1440.

BICYCLE CARRIERS

SAVE \$\$ FREE UPS
1-800-WEAVER-D
1-800-932-8373

Lancaster Farming, Saturday, July 11 1998-P33



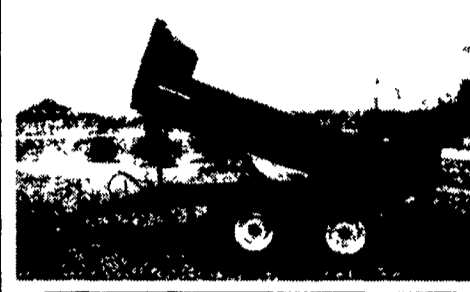
For Sale: 1988 Intl. Step Van
 7.3 L Diesel, 36,000 On
 New Motor. Shelled. Ready to Go.
Call 717-225-4168

LESHER Mack SALES & SERVICE
 2700 Cumberland Sts. (Route 422 West) Lebanon, Pa 17042

LEASE IT! 1999 Isuzu NPR 14 Ft. Supreme Van Body, Call For Details Ask For Leasing Dept 	NEED A SLEEPER OR DAYCAB? Sleeper boxes can be removed - plenty to choose from 1994's - 1995's 
1993 Mack MS250 190 HP, 6 Spd., 217" WB, A/C, PS, Cab & Chassis, Rebuilt Trans with New Clutch 	E7-350 RTLO14610B - 10 Spds., DS404 - 3 9OR on Air, Steel Disc Hub Pilot, 295/75R 22.5 192 WB, 42" Highrise, 400,000 Miles 
1974 Int. Loadstar 392 V8, 4 Spd., Auto, 10 Ft. Bed, 10' Road Plow, New PA Inspection, 26,000 Lb., Runs Good 	1995 Mack CH613, Day Cab, Low Miles - 222, 648, E7-350, T2090, Airride - 4:33R, 204" WB, Spoked Wheels 11R22.5, Good Clean Truck 
1995 Parker Aluminum Dump O.A. Length 34ft., 3-Axle Air Ride, 11R22.5, Spoke 	717-273-4535

FARM DUMP TRAILERS

(Direct from the Manufacturer)



- 6-Ton Dump Trailer**
- 10 ft. x 7 ft.
 - Floating Tandem Axle
 - 3 ft. Front, 3 ft. Tailgate & Grain Chute
 - 16 in. Extendable Sides
 - 10 ga. Floor & Sides
 - 11Lx15 Flotation Tires
 - 2-Way 4 in. x 24 in Hydraulic Cylinder

7-Ton Road Dump Trailer

- Fifth wheel or bumper type
- 16 ft. x 8 ft. deck 3 ft. front rack and pockets side & back
- D.C. hydraulic pump & battery mounted in locking tool box.
- 12 ton drop leg jack
- 10 ga. floor
- 6x3x3/16 tube main frame
- Sealed beam lighting
- 7000 lbs. per axle rating
- Electric brakes on both axle
- 16" tires on white spoked rims
- \$6400 U.S. delivered in Northeast U.S.A.



BERKELMAN'S WELDING

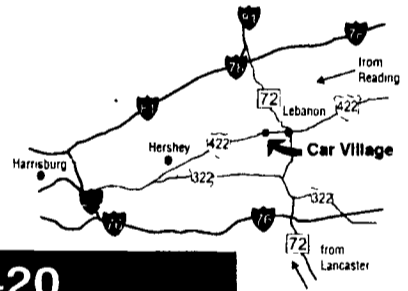
RR 7, AYLMEER, ONTARIO, CANADA N5H 2R6
 (519) 765-4230

Business Hours:
 Mon.-Fri. 9 to 9;
 Sat. 9-4

RTE. 422 WEST
 LEBANON, PA

(Across From Lebanon Valley Mall)

CAR VILLAGE
 HEAVY DUTY TRUCKS



PHONE 717-274-2000 Toll Free 1-800-650-1420

 <p>99 FORD SUPER DUTY CREW CAB 4x4 Powerstroke turbo diesel, 8 sp., XLT, A/C, aluminum wheels, trailer tow pkg. 9900 GVW</p>	 <p>CUMMINS DIESEL HEAVY DUTY 3/4 TONS 96 & 95 DODGE TRS., Very Clean, Low Miles, Tow Pkg., New Tk. Warranties.</p>	 <p>WORK VAN 93 CHEVY ASTRO Extended length, V-4, Auto, A/C, only 42,000 maintained miles, looks good, runs great, shelves & cabinets.</p>	 <p>4x4 Club Dually 93 Dodge LE Power To Tow & Room For The Family, Very Clean, Only 45,000 Miles, Cummins Turbo Diesel, AT, A/C, Tow Pkg., Lock Out Hubs</p>	 <p>\$19,900 96 CHEVY H.D. 3/4 TON, 4 WHEEL DRIVE, 5 sp. manual, high output, 6.5 turbo diesel, A/C trailer tow pkg. limited slip 4-10 gears, only 51,000 miles, remain new tk warranty</p>
 <p>1 TON DIESEL 4WD 96 FORD F350 XLT Powerstroke turbo diesel, AF, A/C, Dual Tanks, Tow Pkg., Limited Slip 4:10 Gears</p>	 <p>4x4 DIESEL SUPER CAB, 96 FORD F-250, 4 WD 2 available, powerstroke, turbo, diesel, AT, A/C, aluminum wheels, tow pkg., 4:10 gears, remaining fact. warranty</p>	 <p>DODGE CUMMINS 2 WHEEL DRIVE TRAILER TOW SPECIALS</p> <p>93 250 CLUB CAB, 5 SP. 93 350 CLUB CAB DUALLY, 5 SP. 92 250 REG. CAB, AUTO 91 350 REG. CAB DUALLY, 5 SP.</p> <p>Very Nice Low Mileage Trucks</p>	 <p>4 WHEEL DRIVE 94 CHEVY 4 DOOR DUALLY Excellent Tow Machine, 5sp, High Output 6.5 Turbo Diesel 4:10 gears, Gooseneck Hitch, Only 40,000 Miles, New Tk Warranty</p>	 <p>RUNS WELL, NEEDS PAINT 89 FORD F-350 CREW CAB DUALLY 7.3 diesel, 5 sp., \$5500</p>
 <p>F250 CREW CAB, 97 FORD XLT, 4X4 Like new, only lots cheaper, only 800 miles, powerstroke, diesel, AT, A/C, all options, dual tanks, aluminum wheels, limited slip, 4:10 gears</p>	 <p>5 SPEED POWER STROKE 4X4 96 FORD F250 4X4 Turbo Diesel, 5 Spd., XLT Pkg., Most Options, Very Clean, Only 25,000 Miles - HARD TO FIND -</p>	 <p>4x4 CHEVY, 93 CHEVY 2500 Heavy Duty 3/4 Ton, High Output 6.5 Turbo, Diesel, AT, A/C, Gooseneck & Class 3, Hitch, 65,000 Miles</p>	 <p>SUPER DUTY CHASSIS 94 FORD SUPER DUTY Big 15,000 GVW, Turbo, 7.3 Diesel, 5sp, A/C, Dual Tanks, Long 161 W.B.</p>	 <p>1 TON UTILITY 96 CHEVY 350 Vortec V8, Auto, A/C, 9' Reading Service Body, Dual Rear Wheels - Very Clean</p>
 <p>DIESEL CARGO VAN 93 FORD EXTENDED LENGTH, Nice, clean, ready to work, 7.3 diesel, auto, A/C, heavy 9400 GVW</p>	 <p>4X4 CREW CAB DUALLY BEAUTIFUL - PERFECT 94 FORD CENTAURUS, Conversion - only 41,000 Miles Turbo 7.3 Diesel AT, A/C, Custom Paint, Chrome Wheel Simulator, ONE OF A KIND</p>	 <p>4x4 CHEVY, 93 CHEVY 2500 Heavy Duty 3/4 Ton, High Output 6.5 Turbo, Diesel, AT, A/C, Gooseneck & Class 3, Hitch, 65,000 Miles</p>	 <p>4x4 DUMP, 95 DODGE, A real workhorse, Cummins turbo diesel, AT, 3 yd. body, only 55,000 miles, real nice, \$22,900</p>	 <p>WORK VAN 89 DODGE EXTENDED LENGTH V8, auto, tool bins, heavy duty 3/4 ton</p>
 <p>\$12,900 93 CHEVY 4X4 SUPERCAB High Output, 6.5 Turbo Diesel, Auto, A/C, Tow Pkg., Capt. Chairs, looks good, runs fine, 207,000 mi. Come See</p>	 <p>4X4 DUALLY-94 FORD F250 XLT SUPER CAB Like new - Only 28,000 Miles Turbo 7.3 Diesel, AT, A/C, Capt Chairs, Tow Pkg, Chrome Simulators, Mint Cond., MUST SEE</p>	 <p>99 FORD F250 SUPER CAB, LARIAT, SUPER DUTY Powerstroke, turbo diesel, AT, A/C, tilt, cruise, power everything, CD player, 6 way power driver's seat, overhead console, tow pkg.</p>	 <p>FARM TK - WORK TK 93 FORD F250 HEAVY DUTY 4X4, Nice, Clean, and Ready To Work 7.3 Diesel AT, A/C, Dual Tanks, Only 58,000 Miles Vinyl Seat & Floor</p>	 <p>WESTERN HAULER 94 CHEVY CREW CAB DUALLY Only 58,000 Original Miles, Strong 454 f.i., V8, Auto, A/C, Gooseneck Hitch, This Truck Will Tow Big Loads \$17,900</p>