

Black and bay Standardbred, solid trotter, classy, ready for trips. 3 year old, Standardbred, sharp looking, built like a Morgan, rides and drives, \$975. (717)442-9432 (717)442-4196.

Board, Shoe, Train horses, single, double and ride \$10/day. Standardbred horses for sale. Ivan Petersheim, (717)442-9432.

Fancy bay Welsh-X 13H pony mare, 2 years, started driving. Flashy yearling Welsh-X pony gelding, 4 white socks great show prospects, \$1,200 each OBO. (610)869-2161.

FOR SALE: Registered Yearling Percheron Stud. Black w/Star. Sired by Blackhome Grandeur Lyn 21371. Registered Black Mare-in-Foal Aug 98' Drives Single, Double, Rides. Aaron F. Beiler 129 South Maple Ave, Leola, PA 17540.

FOR SALE: Gaited Horses, Kentucky Mt., Tennessee Walkers, Spotted Saddle, etc. 13.2-16 Hands. SPOTTED FEVER FARM 717-582-7831 717-582-9808 (fax)

HORSE DRAWN BUGGY, 4-Wheels, Working Cover, Doctor's Buggy. GOOD CONDITION! \$1,300/obo. (717)596-2380.

HORSES BOARDED: 70x170 Indoor Arena, Pasture, Trails, Box Stalls. \$ 3 0 0 / M o n t h . 717-336-7325. Reinholds.

Beautiful Reg. Haflinger mare; fancy reg. Haflinger gelding. Brewster run-about. 814/445-6358.

MILL RUN CARRIAGE Restoring and manufacturing carts, carriages, coaches to your specifications. (610)273-9665, RD#2, Box 7J, Mill Rd., Honey Brook, PA 19344.

Miniature Horses: Weanlings, yearlings, mares and stallions. Mature heights starting at 27". Some have been shown. Starting at \$600. Pet to Show quality, registered. (908)852-6301.

Miniature horse beautiful weanling AMHR Pinto colt \$1000 also pet quality yr-ling filly 25.5" \$500, reg. miniature weanling brown jennet and yr-ling black jennet 609-466-6780 N.J.

Miniature Horses for sale-started new business - 8 available. Need to sell! Call for brochure and prices. (717)786-1660.

Morgan For Sale; Bay Yearling Philly 13+ Hands, By Primary Purpose Out Of Strawberry Shana. Very Gentle & Well Manored. Started Lunging. \$1,800. Leave Message 717-442-3136.

Morgan stallion, chestnut blaze, 15.1H, rides, drive pretty, Lippitt Flyhawk, \$800. P.S. Stables, Snyder Co. 717-374-9971

Paint Pony gelding, dark brown and white. Drives well, needs work at riding. 4 years old, \$600. (717)626-4072.

Paints 1998 colt, chestnut and white, halter or stallion prospect, \$5000. 1998 breeding stock, filly top pleasure and performance bloodlines, \$1500. Older paints also for sale. Call for details 610-754-6286

Registered Saddlebred Stud Service. Also Saddlebreds For Sale. Over 3yrs old. Broke. Paul B. Stoltz H.C.R.1 Box 54 Madisonburg PA 16852.

Reg. Morgan mare 2yrs old, bay, sound, uphead, tall. 1yr old black bay filly, sound, solid built. Weanling bay filly, big & solid. Call 717/888-4490.

Riding and driving ponies. (717)738-1098.

SELLING/BUYING Horses, tack, etc? Call EQUICULTURE the only equine publication exclusively serving this area. 717-642-6836

Standardbred trotter, safe, sound, classy, good family horse. \$1600. 717-656-9596

Standardbred mare, 15H, unruly at stop signs. 12 year old Belgian mare w/4 month old filly. Blonde Jack mule, 16H. Best offer. 717-986-2104

Storm front carriage, like new condition, low mileage. 717/656-0054.

TENNESSEE WALKER - Great on Trails! Buy where you have choice. Will trade. Breed to a world champion. 717/225-4811.

Young pair Hackney ponies, full brothers, good conformation, well matched, taking offers. 717-687-7075

**BIG DRAFT MULES**  
1 Pr. 12 yr. olds standing  
16.2 hands \$2,500  
**PAUL SMUCKER (717) 299-3721**

Standing at Stud  
New Super 15H Jack and 14 1/2 H Jack  
Proven to Throw Good Quality Blonde Colts  
• 14 yearlings, blond molles  
**Ivan K. Stoltz**  
199 Shirktown Road, Narvon, PA 17555  
717/445-5956 ask for Ivan

**QUALITY HORSES**  
Bought & Sold  
English - Western or Gaited  
Call 717-865-7097

**Rubber Mats**  
4x6, 3/4" thick  
(not used belting material)  
**Special \$35/per mat**  
Call for quantity price & pickup  
See us at New Holland Sales Stables Every Monday  
717-334-7282  
**Black Hills Horse Equipment**

**12th Annual Menges Mills Historic Horse, Steam and Gas Show**  
Opens Friday, July 17, 5:00 p.m. continues July 18 & 19  
**FREE ADMISSION AND FREE PARKING**  
At Elicker's Grove (Spring Grove, on Labott Road - 1-1/2 miles off Route 30)  
**LOTS OF SHADE**  
Flea Market, Antiques, Crafts, Tractors, Small Engines, Antique Farm Machinery, Antique Cars, Garden Tractors, Petting Zoo, Kids' Games, Candy Scramble, Threshing, Wood-Splitting, Broom-Making, Blacksmith, Quilt Demonstration, Barrel-Making, Kids' and Adults' Pedal Tractor Pull, Parade of Equipment, Country Cooking  
**NO ALCOHOLIC BEVERAGES ALLOWED ON GROUNDS**  
Music: Friday and Saturday, July 17 & 18, 7:00 p.m. "Pigeon Hill Station Bluegrass Band"  
Saturday and Sunday, July 18 & 19, 1:00 p.m. - "Sally Shearer and the Skytoppers"  
**NO CAMPING BEFORE FRIDAY MORNING**  
Flea market info: (717) 259-7309  
Other info: (610) 683-3607

**EBY**  
USED HORSE TRAILERS  
1991 Phoenix 6-Horse Air-Ride Stainless  
1993 Glick 4-Horse with Dressing Room  
CALL MIKE AT 800-383-4752

**Mules From Roy Epperson from Virginia 540-251-5779**  
2 Loads of top quality mules Broke & green broke  
**Jonas S. King**  
122 Krantz Mill Road New Providence PA 17560  
717-786-7990

**10 SHEEP & GOATS**

**CLUB LAMB FLOCK DISPERSAL**  
Ewes And Wethers. Rams By Achor, Harley, Bob, Sport And Shell  
Call Evenings  
**740-922-4077**

Purebred Border Leicester Wethers  
\$200 or \$75/ea.  
Also very Nice Fleeces (variety)  
**(304) 267-4754**

PENNSYLVANIA'S 20<sup>TH</sup> PERFORMANCE TESTED RAM LAMB AND INVITATIONAL EWE SALE AND SHEEP PRODUCERS FIELD DAY  
**SATURDAY, AUGUST 1, 1998**  
Sheep Producers Field Day starting at 9:00 a.m.  
Saturday, August 1, 1998  
2:00 p.m. Saturday - Ram & Ewe Sale  
**AT PSU'S AG ARENA**  
Next To Pennsylvania Department of Agriculture's Meat Animal Evaluation Center  
651 Fox Hollow Road  
State College, PA 16801  
**RAMS ON TEST:**  
36 Dorsets (14 Fall born) 2 - Polypays  
17 - Suffolks 1 - Oxford  
9 - Hampshires 2 - Cheviots  
1 - Corriedale  
**CATALOGS AVAILABLE UPON REQUEST ABOUT JULY 22**  
For Information contact:  
Glenn Eberly at (814) 238-2527 or 814-865-5857  
Or Write To The Above Address  
Educational Seminars & Booths  
Trade Show & Youth Program  
Approximately 80 ewes will also be consigned for sale from performance breeders

**10 SHEEP & GOATS**  
5 full blood Boer bucks for sale, \$500-\$1,000. Grade Boer goat special \$100/head. HIS KIDS. (717)746-1664.  
7 Ewes, 6 Suffolk, 1 Hampshire. 717-253-2357 Wayne Co  
Boer Goats: 5 Billys and 10 females. (724)523-6275.  
Boer Goat Kids: full blood and percentage, South African, New Zealand and Australian bloodlines. Bing Crest Farm, (717)272-6023.  
Female Nubian dairy goat, purebred, 2 years old, \$100. (717)993-0215.  
Full bred Finnsheep 5 Ram lambs, 1 Ewe lamb, Roots Lineage, fire-champion call 717-292-5220.  
Reg. Boer/% does, \$125-\$200; also 50% buck and doe kids. Huntingdon, PA 800/485-0729.  
Reg. Fainting buck kids, naturally hornless, beautiful black/white markings, \$80. Reg. Fainting doe, tri color \$100. Red/white doe \$85. Chocolate/white wether \$65. 717/244-0561.  
Registered herd dispersal. Alpine and Nubian, show and milk. Reasonable. (610)944-0222.  
Reg. Olde English miniature babydoll lambs, adorable, white male and black female. 610-756-3312

**BOER GOATS**  
Superior Quality. South African Genetics. Bucks, Does & Kids  
**915-836-4431**

**FOR SALE BOER GOATS**  
Full Blood & Mixed Nannies & Billies Call  
**717-933-9698**  
Also: Outdoor Waterers 2-100 gal. Galv. \$125 ea.  
1-80 gal. Poly-\$150  
7x9 Animal Shelters Poly-\$250 Ea.

**11 SWINE**

**BENNECOFF HOGS:** Order 4-H project pigs, boars, gilts: Hampshires, Berkshires, Polands, Durocs and Crosses. (610)285-6582.  
Duroc and Yorkshire boars w/scan figures. Priced to sell! James Parlett, (717)862-3610.

Quality **FEEDER PIGS** For Sale From Pseudorabies Free Herds  
**Fred Patterson 931-364-7050**

Duroc \* Yorkshire \* Spotted \* Chester \* Landrace \* Hampshire \* Pietrain  
Bred Gilts & Boars for sale  
Bred gilts are bred for purebred & crossbred litters  
Also, Club Pigs for sale  
PRV & Bruc. validated herds.  
**Calvin Lazarus & Sons 610-799-3375**  
Grant Lazarus 610-767-3595

**BERKSHIRES** Industry's Meat Quality Leader  
PRV Herd #14 Bruc Free Herd #135 Stress Free Herd Boars & Gilts for Sale Scan Figures Available  
**Inners' Berkshires Greg & Beth Innerst 5140 Deer Rd., Red Lion, PA 17356 717-246-1738 Will Deliver**

**HOLLOWAY GENETICS DUROCS/HAMPS**  
Where Genetics & Figures Meet!  
Duroc Boars - Gilts & Bred Gilts w/due date & figures  
Delivered just about anywhere Satisfaction Guaranteed!  
Continuing to provide some of the best genetics in the country!  
Call Dave 717-235-6966

**PTS**  
**PIERCE TRAILER SALES**  
SCHAEFFERTOWN PA (717) 949-3246  
**MONARCH**  
HORSE AND STOCK TRAILERS  
**PA INTERNATIONAL**  
UTILITY TRAILERS AND FLAT-BEDS

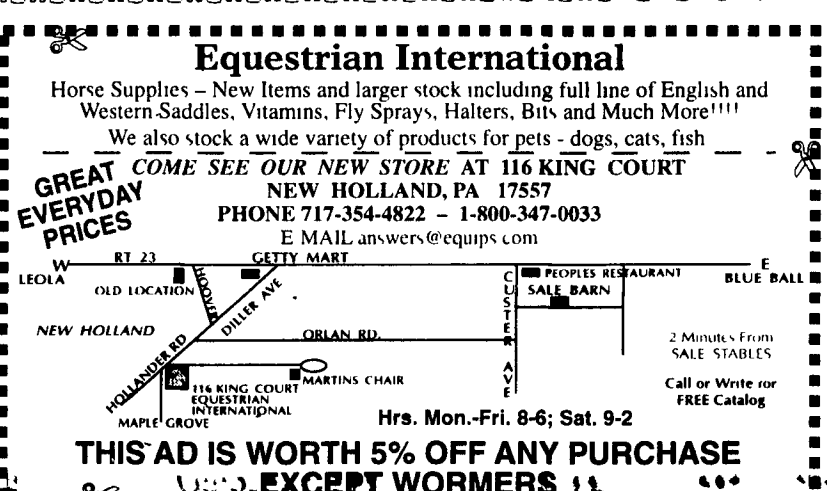
**Zebra**  
100% halter broke, friendly & gentle  
**Texas Long Horn Ox**  
gentle, halter broke, 5' spread.  
Halter broke Llamas  
**Mini Donkeys Dwarf Goats**  
**SPRING HOUSE FARM 717-872-8602**

**Jack Russell Stud Service**  
Exceptional Color and Confirmation, Outstanding Temperment  
**(717) 872-8602**

**Glick's Horse Dentist**  
Teeth Floating, Wormer.  
**David S. Glick**  
262 Cut RD  
Gap, PA 17527  
**717-768-9850**

**WANTED**  
**HORSE MANURE**  
**Straw Only**  
**610-869-0202**

**Equestrian International**  
Horse Supplies - New Items and larger stock including full line of English and Western Saddles, Vitamins, Fly Sprays, Halters, Bits and Much More!!!!  
We also stock a wide variety of products for pets - dogs, cats, fish  
**COME SEE OUR NEW STORE AT 116 KING COURT NEW HOLLAND, PA 17557**  
PHONE 717-354-4822 - 1-800-347-0033  
E MAIL answers@equips.com  
Hrs. Mon.-Fri. 8-6; Sat. 9-2  
**THIS AD IS WORTH 5% OFF ANY PURCHASE EXCEPT WORMERS**



Penn State is an affirmative action, equal opportunity university. Penn State encourages persons with disabilities to participate in its programs and activities. If you anticipate needing any type of accommodation or have questions about the physical access to any of our facilities, please contact the appropriate office.