

Economy Polecat Scissors Lift, 10' working height, 2 to choose from, \$900/each. 717/336-7375 No Sunday Calls.

Farm J1601 3pt. hitch, winch, very good condition, pulls 13,000lb, \$2850, new cost over \$5000. Noah Yoder, 225 Coke Oven Rd, Meyersdale, PA 15552.

Ford 550 backhoe loader, runs great, ready to work, \$8,500. Evenings, (301)261-9043.

Forklift Wholesalers 2000 to 92000 Lb. Lifts Available. 70 in Stock. Sale-Rental-Finance w/ Warranty. Chalk Equipment. (410)686-6800.

Four and one bucket for 100E Int. Track Loader, Rebuilt head for a Int. TD6. 717-776-7735 Cumberland County.

Gradall 471 Detroit, 3 buckets, works great, old but very good, price reduced to \$9,000 negotiable. (814)674-8756.

Ingersol Rand 100CFM compressor, Deutz diesel, \$1800. 717/336-7375 No Sunday Calls.

JD 450 crawler loader, good condition, \$10,000 OBO. 610/797-5328.

Jones PTO tub grinder, excellent condition, (215)345-1368.

Koehring Bantam Trackhoe, runs good, plumbed, \$7500. 717-582-4872

Mack tractor dismantling for parts; 1-ton blacktop roller, good condition, runs good; Blaw-knox paver PF180, bad engine, good parts. 717/564-2337.

MONBARK DEBARKER; Heavy Duty \$10,500/obo. 1979 INTERNATIONAL DUMP TRUCK; Single Axle, 671 Detroit engine \$8,000/obo. BERCH METAL FORMING ROLLS; 1/2x8' \$10,500/obo. (814)623-8696.

Niagara 4 head powered sheet metal machine, slit, crimp, bead, form. \$1500, 22" floor model drill press VS0-3000 rpm. #3MT \$850, 10" Delta 3hp. abrasive cut off \$275, Famco floor model arbor press \$750 call 814-634-0325.

Royer 180 topsoil shredder, new motor & paint, runs very well, \$7500. 717/544-2803.

WANT TO BUY all makes and models of construction equipment. (301)371-5500.

FORKLIFT

Clark Walkie Stacker, 4000 Lb. Cap., Industrial Battery & Charger, Good Condition **\$2,500**
717/533-7377

Hobart 300 AMP, 3-phase, Meg welder w/wire feeders. Includes new 300 AMP Tregaskiss gun, older but totally rebuilt by Dressel Welding Supply, 50' power cord \$1400 OBO
717-369-2477

Equipment

CHALK
Sales - 150 Forklifts In Stock



410-686-6800
BALTIMORE, MD



DIGGING DOWN? POWER UP!

Kubota introduces the KX-Series mini-compact excavators from 22.2 HP to 42.7 HP, featuring Kubota's "Power Up" hydraulic system that increases digging performance and traveling speed.

Whatever your construction needs, we have the right excavator for you. The KX-41 and KX-71 come with a two speed swing system that improves operator feel in delicate digging areas, while the KX-101 and KX-151 are equipped with the "TPSS" two pattern selection system that lets the operator choose the most comfortable operating pattern.

If you require an excavator that delivers superior performance and digging capabilities, work a Kubota KX Excavator and "Power Up".



Kubota

Model	HP	Digging Depth	Operating Weight
KX-41	22.2	6'9" 1" - 7'11" 3"	3,615 lbs
KX-71	32.2	8'9" 1" - 10'2"	6,415 lbs
KX-101	36.6	10'1" 3" - 12'5"	8,115 lbs
KX-151	42.7	12'0" 3" - 12'8"	12,025 lbs

Prices Starting As Low As **\$356⁰⁰** per month.

MESSICK FARM EQUIPMENT, INC.

Rheems Exit - Rt. 283, Elizabethtown, PA 717-367-1319, 717-653-8867



Furukawa FX040 Trackhoe, Rubber tracks, blade, side shift boom, cab. 2300 hrs, nice.....\$14,500



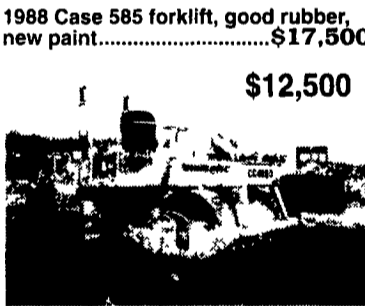
Condor 48 ft manlift, 4x4, good rubber, new paint, rotating basket.....\$14,500



1988 Case 585 forklift, good rubber, new paint.....\$17,500



85 Kawasaki wheel loader, new rubber, new paint.....\$22,500



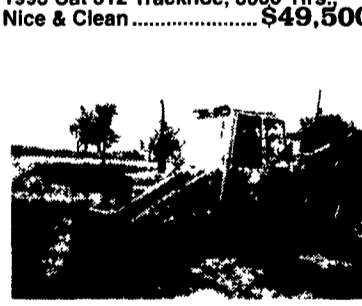
Dynapac 42 w/66" Drums, Less Than 100 Hrs. On New Cat 3208 Dsl. \$12,500



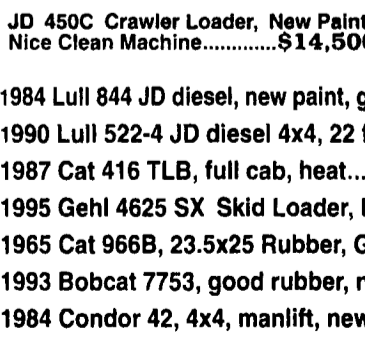
1993 Cat 312 Trackhoe, 3800 Hrs., Nice & Clean.....\$49,500



JD 450C Crawler Loader, New Paint, Nice Clean Machine.....\$14,500



1987 Ford 655A w/Ext. Hoe, Good Rubber.....\$15,500 \$14,500



1984 Lull 844 JD diesel, new paint, good rubber, mast stabilizers...\$28,000

1990 Lull 522-4 JD diesel 4x4, 22 ft, new rubber, new paint....\$24,000

1987 Cat 416 TLB, full cab, heat.....\$17,500

1995 Gehl 4625 SX Skid Loader, low hours, new rubber.....\$12,900

1965 Cat 966B, 23.5x25 Rubber, Good Condition.....\$21,000

1993 Bobcat 7753, good rubber, nice.....\$13,200

1984 Condor 42, 4x4, manlift, new paint, good rubber.....\$14,900

AA Equipment

717/529-2512
No Sunday Calls

1797 Robert Fulton Hwy., Quarryville, PA 17566
• We Buy & Sell
• Financing Or Lease Purchase Available
• 90 Down NO Payment For 90 Days



JCB 1400B 86 Model, Digs as good as it lifts.....\$9,500



'83 Komatsu D31A-17 CT, 6-Way Blade,CALL



Lull 844, Good Running Gas Engine, New Paint, Ready To Work.....\$19,500

SOLD
94 Case 580 4x4, Ext-Hoe, New Paint, 3300 Hrs, Wobble Back Controls.....\$32,500
Hitachi EX60 Excavator, 3300 Hrs.....\$19,500
89 Case 680L 4x4, Cab, Ext. Hoe, 2800 Hrs., Good Rubber, New Paint.....\$34,000
95 Cat 311 Excavator, 1800 Hrs., A/C Cab.....\$49,000

Jay Weaver

717/336-7375

Financing and Lease Purchase Available • No Sunday Calls

PPS

PROGRESSIVE PRESSURE SYSTEMS

1248 EAST NEWPORT ROAD

LITITZ, PA 17543

Pressure Washers • Water Recycler
Sales & Service

Custom Designed Units Available

"A Full Line of Pressure Washers and Related Parts"

E-Mail "progress@redrose.net"

Website "www.lancastercounty.com/pps"

717-626-5511

Fax 717-626-5098

JULY SPECIALS

On SURFACE CLEANERS and TELESCOPING WANDS

Steel Eagle 24" Cleaner **\$775**
Also 30" Available (Call for Price)

16" Whirl-A-Way Cleaner **\$425**

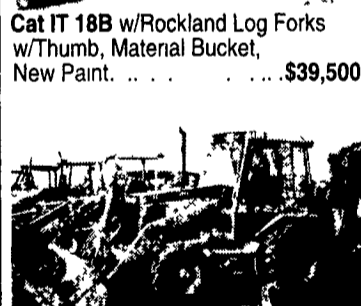
24 Foot Telescoping Wands **\$155**



Cat IT 18B w/Rockland Log Forks w/Thumb, Material Bucket, New Paint.\$39,500



Komatsu D66S, 1988, ROPS, Good Condition \$29,500



93 Cat 416B 4x4, Ext. Hoe, New Rubber \$33,000

93 Ford 555D, ROPS, Low Hours \$20,000

JD 310B EROPS, 2WD \$11,500

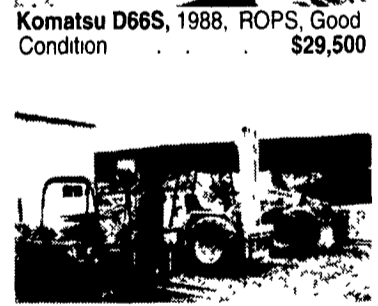
Cat 120G Motor Grader 1978 12' Moldboard, Serviced by Cleveland Bros. Excellent Condition \$35,000

Cat 613 Motor Scraper, 11 Yd Capacity, **SOLD** \$20,000

(2) Bobcat 743 Skid Loaders .. Starting at \$9,000

Int. 500C, 4-in-1 Bucket, Ripper, Excellent UC \$6,500

JD 450C w/Backhoe, Good UC \$17,500



LIFT EQUIPMENT

(2) GSI 20', Electric.....\$2,800 Ea.

92 Ingersoll Rand 706F Rough Terrain Forklift, 6000 lb, 22' 4x4 Cummins Diesel \$22,000.

JCB 525B, 5,500 Lb., 22' Reach \$22,000



'93 Cat E70B Excavator, Good UC, 3000 Hrs., Exc. Condition..... \$26,000

Yanmar YP451 w/Blade... \$11,000

Hitachi EX120, 42" Bucket Inspect Working On Job Site. **SOLD** \$34,000

No Sunday Calls

Financing & Lease Purchase Available

Weaver's Equipment Sales

RD#1, Box 418, Milton, Pa. 17847
Phone: 717-523-9598