

**MAILBOX MARKET
FOR SALE**

4 lambs, 4 mo old, 2 rams, 2 ewes, fathered by Dorset Ram, \$70 ea \$260 all, very nice 610-926-4436 Berks Co

Int 6' disk harrow, field ready, \$125 610-847-2732 Bucks Co

JD 2 row corn planter, \$400, 7' sickle bar mower, \$600, 2 row cultivator, \$200, sprayer, \$350; Yamaha Tera-Pro mower sprayer, \$4800 814-948-8122 Cambria Co

Wild Turkey poult & guinea Keets, all ages, also 2 blue eared pheasant males 1 yr old 717-229-2955 York Co

1985 Yamaha 255 In-moto, new tires, reverse, good \$500 OBO, 2 spd dual remotes, PTOs, \$350 OBO 610-488-7211 Berks Co

4 cyl Wisconsin eng w/clutch in working cond \$700 Elmer Stoltzfus 282 Cur Rd, Gap, PA 17527 Lanc Co

Air end lift, \$300, 20 T air jack, \$250, apr paving breakers, steels chipping hammers, rock drills, pallet jacks 717-285-4312 Lanc Co

36 inch concrete trowel machine (wacker), used once, must sell \$1385 717-359-7942 Adams Co

20x80 Harvester silo w/Goliath unloader, \$9000, 20x55 Harvester w/Goliath unloader, \$7000 301-834-7246 Fred Co

Singer model 31-15 comm'l straight stitch sewing mach, on stand, 12 bobbins incl \$60 OBO 717-528-4633 Adams Co

Sickle mower for 9N \$200, Old service station light, needs restored, \$250, auto glass pattern machine, \$450 301-662-3295 Fred Co

(1) tire and wheel for 580C Case 2WD 111x16 10 ply, 8 bolts, bin hole, both exc cond \$100 908-766-4038 Somerset Co NJ

Farmall 140 tractor, fast hitch, cultivator, land plow, sickle bar mower, snow-plow, runs exc \$3950 delivered 607-656-4568 Greene Co NY

2 miniature male donkeys, 1 - 5 mos., 1 - 2 yrs, \$500 ea 717-426-3996 Lanc Co

Boston terrier pups, males, \$125, females, \$150, no papers No Sunday calls, 717-354-7423 Lanc Co

Windmill 9 ft miniature for your lawn, \$80, 308 rifle cases for reloading, 10 cents ea 717-445-7422 Lanc Co

1983 Chevy 12 passenger van, 6.5 diesel, 60,000 mi on new engine, black runs good, \$250, see at Lancaster 508-883 2754

Remington 100BDL 223 rifle w/Redfield five star AO scope and case, as new, \$500 610-593-7077 Chester Co

1993 Hudson Brothers trailer 10,000 lbs GVW with fenders, spare tires, manual winch, inspect till 6/99 \$2000 OBO 717-528-4952 Adams Co

1930-31 Ford p/u cab, good cond, \$2500 Daily after 3 Sat & Sun anytime or lv mssg 610-584-4501 Montg Co

Aluminum siding, new, 35 pcs, 34"x6'8", 4 pcs 34"x9", \$10 ea Landscaping stone all sizes, \$25 p/u truck bed 717-768-0378 Lanc Co

MF 63C corn head, 6 RN NH 880W hay pickup, NH 880 chopper for parts Wanted IH 56 blower and 717-367-0874 Lanc Co

1968 Int 504 gas 3 ph TA restored N tires, F good R weights 717-266-4009 York Co

Old motorcycle wanted for my 16 yr old son, must be cheap, need not run, call Steve, 717-656-4403 Lanc Co

9 yr old Percheron work horse, big, strong, good broke, works anywhere Call after 7 AM or 7 PM 717-776-6220 Cumb Co

MF 540 combine, 1143 corn head, 1859 13' flex head, \$11,000, also 540 combine for parts 717-799-5247 Col Co

NH 5271 forage harvester w/grass & corn heads, gravity flow box w/chassis, Oliver single row corn picker 717-935-5830 Mifflin Co

Fox terrier pups Noah L Zook, RD #1, Box 390 Lebanon PA 17042 Prescott Rd, Leb. Co

Matched pair grade Hallinger horses, brother & sister, 3 yr & 4 yr, green broke, health forces sale 607-746-6807 Del Co NY

1986 Ford F150, 2.3 litre turbo diesel, air, 97k mi, 5 spd, runs exc, good cond \$3995 After dark/mssg 717-597-1278 Frankl Co

Steel tank, 5 ft diameter, 12 ft long, 3/4 inch wall thickness, \$500 OBO 717-536-3572 Perry Co

(1) compl loco comform stall for sows Compl w/SS sow feeder, anti-crush bars and creep area, \$150 717-536-3458 Perry Co

JD B, w/cultivators, \$1200, JD corn sheller #43, \$350, 2 Martin feeders, \$50 ea, 2 Richie waterers pair, \$50 717-458-5111 Col Co

JD plows, disc & mold-board, cabover camper, cheap, 4-horse tandem trailer, F20 2 pc 36" wheels, JD model B tractor eves 301-834-8043 Fred Co

86 Iveco 340 150 000 mi, 18,900 GVW, 14' stake-body dump, new turbo, 5 spd towing pkg good tires, \$5900 717-442-3166 Lanc Co

Apprx 100 bundle of tobacco lathe, 50 pcs per bundle 717-336-1571 Lanc Co

JD 44 corn head, hi tin, very good cond, \$3000 OBO 410-758-6652 Queen Annes Co

Quarter horse mare Bay w/white 15 2 hands, 11 years old, rides Western cubs a little, \$1200 firm 717-741-1982 York Co

Tomato stakes treated oak, 1"x48", never used, \$20 per hundred 1300 avail Free delivery possible 609-259-1102 Montg Co

AKC reg Chocolate labs female, 3 yrs old, \$150, and 7 year old yellow male, \$125 OBO 717-786-6053 Lanc Co

Miller 450 Mig welder, good cond, \$1500 Wilmer K Smoother, 61B Old Leacock Rd, Ronks, PA 17572 Lanc Co

Push mowers & gange mower, Lapp Sharpening 1/4 mile Caboose Motel, 264 Paradise Lane, Ronks, PA 17572 717-687-8237 Lanc Co

I-beam, 8"x10"x16' long 32 of ladder for grainbin, 4' sections, 7-2' sections, alum windows John S King, 2166 Compass Rd, Honey Brook PA 19344 Lanc Co

Jacobsen front line mower, 72" Kubota diesel, \$2600 OBO, good cond, antique cement mixer, \$125 OBO 610-933-2469 Montg Co

1500 bu gd galv wire corn crib, \$825 OBO, New Idea mow/conditioner, No 290 w/one rubber & 1 steel roll, \$500 OBO 610-454-0139 Montg Co

1969 wheel horse suburban resto red runs great w/mower deck, snow plow, 5 shp Tecumseh 610-369-0743 Berks Co

JD 3300 combine, 2400 hrs, rotary screen 10' head, 18 434 tires, nm for IH barn weight brackets for Tye 215-654-0344 Montg Co

NH 320 baler w/thrasher, \$2000, 89 F250 107km, 351 5 spd 4x4, \$4900 Case 580B backhoe, \$9000 814-259-3159 Huntg Co

1987 Silverado ton pickup insgle wheel, heavy duty, good cond, no rust, good farm truck \$3500 Merritt Bowman 814-652-5604 Bedford Co

Case tractor rms and tires, mounted & loaded 14 9x24 on 13' rim, minimum tread asking \$100 ea 717 435-0848 Lycorning Co

Onan alternator 25 000kw, \$2000 717-324-2168 Lycorning Co

New Idea five wheel rake \$400, 3 pt wheel rake, \$200, NI rake/tedder, \$150, bale wagon, \$500 717-229-2218 York Co

1974 Blazer, good cond, 4700, Little Giant corn drag, \$300, 1700 Int 1971 21,000 GVW air brakes 717-626-4359 Lanc Co

NI 325 corn picker, \$1900 2 durhp wagons, \$250 ea 1200 bu wire crib, \$100 NI loader, good cysls, \$300 610-262-8373 Lehigh Co

10 ft transport disk, JD 7 ft internal dis pull type, 1/2 ton car trailer, 3 pure bred Suffolk sheep, no papers 717-262-3589 York Co

MonBark debarker, \$10,500, Int dump, \$8000, metal forming rolls, 5/8x8", \$10,500, AKC German Shepherd, females, breeding stock 814-623-8696 Bedford Co

4 acre home site near Woodstock, NY, family area, exc schools, Mt views, rolling meadow Call owner, 914-457-3756 Orange Co

4' hand pnide finishing mower, new, also JD 6' belly mower, fits 850, 950, good shape 301-854-0062 Howard Co

38" JD mower deck in rough shape but still does a good job, \$100 717-354-3155 Lanc Co

\$75 ea p/u tool box, shop press, 300 gal tank SB Ford headers grill guard p/u running boards 717-664-2629 Lanc Co

1986 Chevy school bus 60 pass, 366 gas auto blue bird body clean \$2500 410-239-2014 Carroll Co

1986 Ford 6 cyl 300 cu in eng, 150k mi, no knorcks, C-6 auto trans incl \$150 215-855-3191 Montg Co

1980 Yamaha QT500cc cycle, 1,050 mi, old Singer open arm shoemaker, sewing mach, old elec taylor mach After 4 pm 610-987-6749 Berks Co

JD 3300 combine grain 2 row corn heads new engine many new parts \$8500 540-882-3487 Loudoun Co VA

Accordion 120 bass pearl color, 5 vanaton, made in Italy w/case, exc cond, \$350 610-693-5624 Berks Co

Gehl 880 haybine (2) 1 running, 1 parts John Bean potato grader w/picking table and scales 609-728 7376 Camden Co

Air compressors and tanks rebuilt 390 Quincy 2-stage 15 hp rebuilt 4125 Quincy single stage 20 hp Keystone air power 717-866-9221 Leb Co

Minneapolis Moline pedal tractor, shuttle shift, 2 spd, 80% org cond, paint w/spark plugs, nice tractor, \$1000 410-346-7157 Carroll Co

1987 Peterbilt tri-axle dump, 425 hp fuller, 9 spd, \$40,000 1984 Ford LN8000 tandem dump, 3208 Cat \$25,000 610-693-5574 Berks Co

Tires 10 00x20 12 ply on Budd wheels, \$140, Hyd lift gate, \$500, 13 spd transm 700, 8V318 D/D engine faulty, \$1500 717 369-4941 Frankl Co

3 doz of qt jars, \$3/doz and 6 doz of pints \$12/doz have some other jars for canning, \$1/doz 717-354-0616 Lanc Co

Angus service bull, 25% Piedmontese, 75% Angus, avail Aug, also Jersey springing heifer due in Sept 610-273-3602 7-8am Chester Co

NH 791 spreader \$2450, AC 426 cu in engine \$1500, 89 Dodge dually p/u bed, \$300 717-677-8789

3300 Fox chopper 6' pick-up head, elec controls & grinder, \$1700, hand pallet truck \$225, Allis G tire, (rear) \$25 717-272-0041 Leb Co

Super C new paint, runs & start, excellent, good rubber, R weight ex shape \$1950 Baby Doll sheep 1 ewe, 3 ram 717-837-3365 Snyder Co

Case side rake \$85 1951 Chevy stake truck, 3/4 ton easily restored \$1100 or OBO Farm gates \$10 ea 717-258-6770 Cumb Co

MF410 10 ft hume reel 3 screens 292 engine cab w/AC field ready 717-387 1968 Col Co

Heavy duty steel adj shelving racks 10' hx10 1 5 w \$150 2 sets McCormick #7 cutter knives 231 Cooks Ldg Rd Peach Bottom 17563 Lanc Co

Anti-fatigue rubber mats good for your back 2 x4 x5/8, \$32 Levi Zook 362 S Belmont, Paradise PA 17562, Lanc Co

Pair 13-6-28 turf tires tubes, rims fluid ready to install, \$300 717-786-3584 Lanc Co

4 Jersey cows 2 due within 2 wks, asking from \$400-\$600 AKC Choc Lab male, 9 mo \$50 717-922-3365 Union Co

AC WC w/2 spd rear good tin, good to restore \$800, also parts for Farmall Cub 717-784-1779 Columbia Co

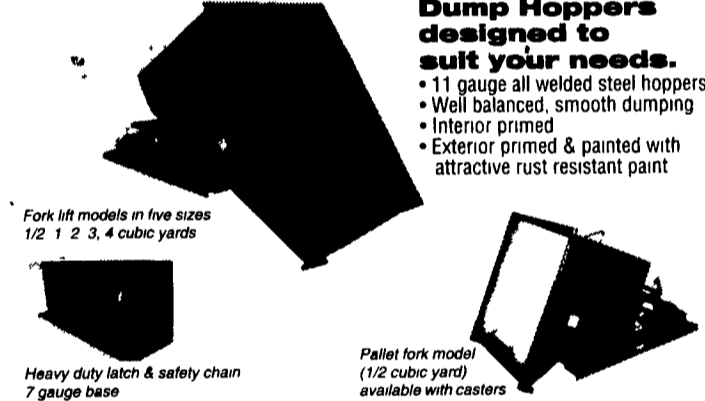
40 pcs 2'x8' 3 rib aluminum roofing, (2) 1100x16 front tractor tires, (2) 7 50x20 implement tread tires, all good 717-229-2352 York Co

1950 Oliver 77 tractor \$1200, 1948 Co-Op E-3 tractor, \$500, 1950 Co-Op E4 tractor, \$1500 717-582-3778 Perry Co

Press brake 6' wide will bent 3/16 plate, \$1500, lg Pangcorn sand blaster, \$400, 400 amp gas welder 717-369-4388 Frankl Co

56 Ft. Super Chic
Reasonable weekday rates
Blue Fish, Flounder, Wreck,
Shark, Tuna and overnight
canyon trips.
6th street, Barnegat Light, NJ
Captain Ted White
Captain Les Osborn
609-296-4480

Meadow Creek Welding

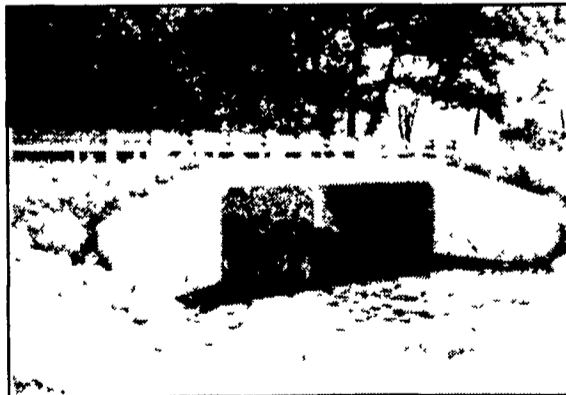


**Dump Hoppers
designed to
suit your needs.**

- 11 gauge all welded steel hoppers
- Well balanced, smooth dumping
- Interior primed
- Exterior primed & painted with attractive rust resistant paint

124 Meadow Creek Rd. • New Holland, PA 17557
717/355-0779

• Agricultural • Commercial • Residential

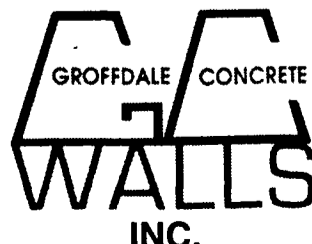


We do box culverts and wing walls
to match your specifications

- Retaining Walls • Bunker Silos
- Manure Storage, Etc.

LET OUR EXPERIENCE WORK FOR YOU-ESTABLISHED SINCE 1979!

We Work
Hard For
Customer
Satisfaction!



430 Concrete Ave., Leola, PA
717-656-2016

Sizes And
Layouts
To Your
Specifications

TEATES LIGHTNING ROD SYSTEMS

U.L.P.A. & N.F.P.A.
FREE ESTIMATES

Tim Shaffer, Owner P.O. Box 136
(717)374-7090 Freeburg, PA 17827

*Black Rock
Repair*

Manufacturer of Farm Sprayers
Sprayer Parts and Repair
• Pressure Washers • Hydraulic Hoses
• Black Walnut Cracker,

858 Pumping Station Road Answering Service
Kirkwood PA 17536 717 529-6553

YES!



ROSENBERY STOVES
(717) 532-9023

Diesel Power Systems

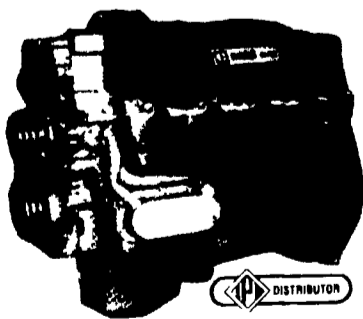
415 PETERS ROAD GORDONVILLE, PA 17529

Specializing in
MID RANGE • HEAVY DUTY
DIESEL ENGINES
POWER UNITS
PTO's
PUMP DRIVES
CLUTCH REDUCTIONS
SALES - SERVICE



LARGE INVENTORY OF NEW & USED PARTS & ENGINES

Used, Rebuilt And Exchange
3208 Caterpillar Engines



INCREASE LIFE AND EFFICIENCY ON
EQUIPMENT WITH



"THE FIRST IN SYNTHETICS"
MOTOR OILS AND LUBRICANTS
INDUSTRIAL - AGRICULTURAL -
COMMERCIAL

- COMPRESSOR • HYDRAULIC • GEAR •
- TRANSMISSION • GREASE • 2 CYCLE • BAR & CHAIN •
- CLEANERS • FULL FLOW, BY PASS & AIR FILTERS • FUEL ADDITIVES

For More Information Write
to Address Above or
Call (717) 354-4801 Service