

Less Noise, More Money

Belleville Livestock

Belleville, Pa.
 Wednesday, July 1, 1998
 Report supplied by Auction
DAIRY COWS: 600.00-1285.00 HEAD.
SHOATS: 23.00-48.00 HEAD.
BEEF COWS: 34.00-41.75 CWT.
BEEF BULLS: 42.00-45.50 CWT.
STEERS: 59.00 CWT.
LAMBS: 94.00-107.00 CWT.
HOGS: 36.50 CWT.
FARM CALVES: 85.00-112.50 CWT.
FEEDER CALVES: 59.00-70.50 CWT.
OATS: 1.50-1.70 BUSHEL.
CORN: 112.50-115.00 BUSHEL.
ALFALFA HAY: 160.00 PER TON.
MIXED HAY: 82.50-125.00 PER TON.
STRAW: 87.50-122.50 TON.
RABBITS: UNDER 4 LBS. .25-1.00 HEAD; 4-6 LBS. 2.00-3.00 HEAD; OVER 6 LBS. 3.00-5.00.
DUCKS: 2.50-16.00 HEAD.
CHICKENS: .75-9.00 HEAD.
GEESE: 3.00 HEAD.
TURKEYS: 8.00 HEAD.
GUINEAS: 6.50 HEAD.
BARN PIGEONS: 1.75-2.00 HEAD.
WHITE BIRDS: 4.00-5.25 HEAD.
FANCY BIRDS: 15.00 HEAD.
GUINEA PIGS: .50 HEAD.
QUAIL: 2.00 HEAD.
DOVES: 3.50 HEAD.
PHEASANTS: 3.75-5.00 HEAD.
PEACOCK: 35.00 HEAD.

MADISON, Wis.— Bou-Matic, a company of DEC International, Inc. has developed a way for dairy producers to save money while making the world a quieter place to live in.

Most dairy operations use constant-speed vacuum pumps that turn out much more airflow (cfm or L/min) than is actually required for milking and for cleaning a milking system. Traditionally, one or more vacuum pumps are installed in a milking system to produce a minimum constant airflow of six cfm (170 L/min) per milking unit (teat cups and claw assembly).

Recent scientific research has determined that the amount of airflow actually used for "steady state" milking - when all milking units are attached without any squawking teat cups or air leaks - is as little as one or two cfm (30 or 60 L/min) per unit.

According to Bou-Matic Marketing Manager Joe Prazak, "Even a superb, sanitary cleaning of the milking system requires as little as two to two-and one-half cfm (60 to 70L/min)

per milking unit, if the CIP system is properly set and balanced."

Prazak said, "There are times during milking, however, when additional airflow is required, such as when attaching units or when there is a squawking liner or when a milking unit falls off. Likewise, when cleaning the milking system there are also some instances when additional airflow is needed, such as when on air injector admits atmospheric air into the milk line to form a wash slug."

As a result of research and on-farm tests, the ASAE (American Society of Agricultural Engineers) and the ISO (International Standards organization) have officially revised their standards to reflect this new scientific knowledge. With this new knowledge, it is no longer necessary to run a vacuum pump at a constant speed to produce the maximum amount of airflow that you may need for only short periods of time during milking or cleaning.

Northeast District

Jersey Show August 25

LIBERTY (Tioga Co.) — Make plans now to attend the hottest show of the summer — the 1998 Northeast District Jersey Show.

Jerseys are gaining in popularity and what better way to celebrate the progress of the breed than by showing off your best at our local show. This year's show will be held at the Troy Fairgrounds (Alparon Park) on August 25, beginning at 9:30 a.m. Michael Heath has agreed to be the judge for the day.

Entry fees are \$7 for adults and \$5 for youth, under 21. Entries postmarked after the deadline will be \$15 each. All entries must be postmarked by August 18, 1998.

To enter, record the animal's name, date of birth, registration number, sire, dam and ownership information and latest production record on a sheet of paper. Also include the class or classes you wish to enter the animal in and if she is owned by a junior.

A total performance award based on actual protein production and class placing will also be given at the end of the competition. To be considered for the total performance award, include the latest completed 305-day record on your entry form. In the event of a tie, the judge will determine the winner.

All cattle MUST be accompan-

ied by a health certificate signed by an accredited veterinarian that includes a statement that the animal(s) identified have been immunized against IBR, PI3 and BVD. Animals that have not been vaccinated against BVD during the previous 12 months, must receive one dose of modified live virus vaccine given at least 15 days and not more than 180 days before the show or two doses of killed vaccine, two to four weeks apart, with the last dose given at least 15 days and not more than 180 days before the show. Animals that have been vaccinated against BVD within the 12 previous months, must receive at least a single injection of modified live or killed vaccine given not less than 15 days and not more than 180 days before the show.

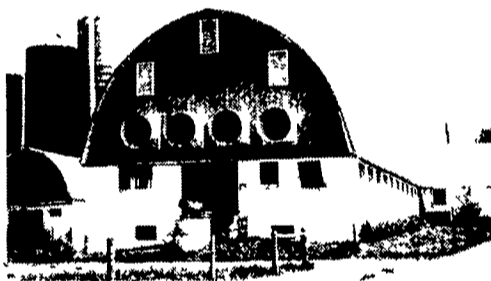
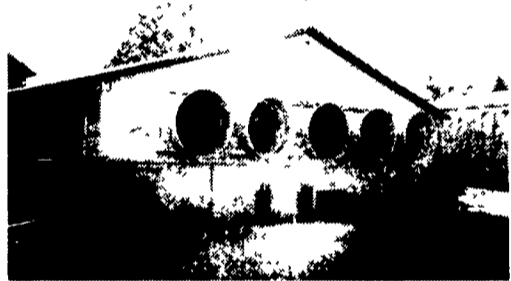
Interstate animals exhibited must meet the Pennsylvania requirements and must be accompanied by an Interstate Health certificate. Rabies vaccine is suggested but not required. Exhibitors may bring animals to the fairgrounds on Monday, August 24 between 7 a.m. and 9 p.m.

Due to rising expenses, we rely heavily on industry donations. All donors will be thanked publicly for their contribution. Send any donations to Paul Moyer, show chairman, RR 1, Box 88-A, Roaring Branch, PA 17765.

Keep Your Cows Comfortable with "TUNNEL VENTILATION"

Comfortable Cows Produce More Milk

The Ventilation System Experts
aerotech



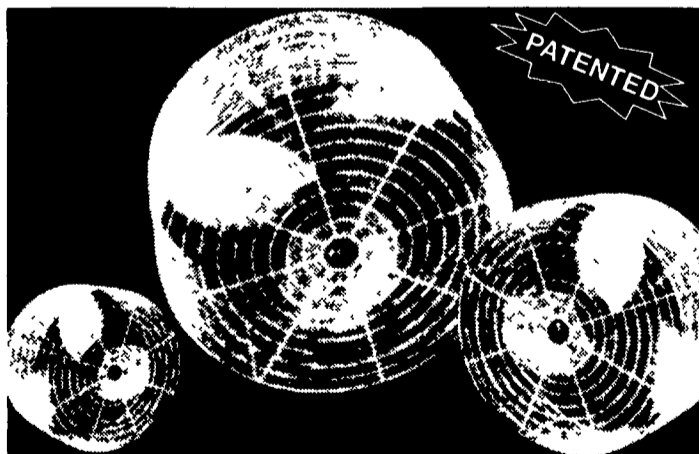
Introducing the
NEW Aerotech Fan
 with Galvanized Housing

Barn Kooler® Air Circulation Fans

20", 24" & 36"
 IN STOCK

Cool Down with a Cool Price

Receive Year-Round benefits for your livestock with a Schaefer Barn Kooler



SCHAEFER
 Ventilation Equipment

WILL SHIP ANYWHERE

Call CEDAR CREST To Assist You In Designing Your Ventilation System. We Also Do Complete Installations



Cedar Crest Equipment

Two Convenient Locations

608 Evergreen Rd.
 Lebanon, PA 17042
 (717) 270-6600
 1-800-646-6601

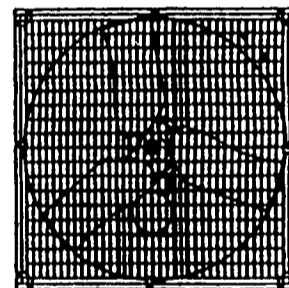
RD 2 Box 271
 East Earl, PA 17519
 (717) 354-0584

EMHERR

Dayton

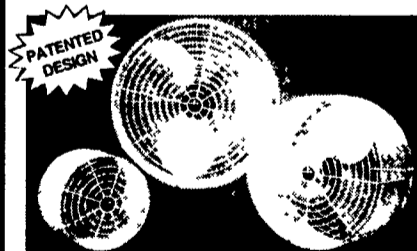
AGRICULTURAL FANS

Belt Drive Fans with energy-saver motor, galvanized housing



Also Shutters & Thermostat Avail.

- 36" B.D. 1/2 HP.....790001.....\$229
- 48" B.D. 1 HP.....790002.....\$349



In Stock Now! SCHAEFER FANS

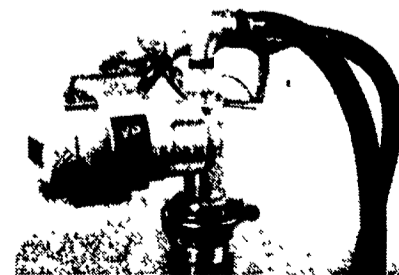
- Increases Production Levels
- Reduces Fly Infestation
- Reduces Heat Stress
- Improves Air Quality

- 24".....784842.....\$189⁹⁹
- 36".....784843.....\$219⁹⁹

Fuel Pump

12 Volt DC Hot Price

\$189⁰⁰



★ Full Line Parts Dept. ★
 ★ Sell, Service & Install ★



Rt. 272 South
 Willow Street, PA 17584
 Ph. 717-464-8321 or
 Toll Free 800-732-0053

Mon.-Fri. 6:30 am to 8 pm
 Sat. 7:30 am to 6 pm
 Sun. Closed



ACE
 Hardware

UPS Shipping Point

7/4