

## New Region, New Region Manager

STATE COLLEGE (Centre Co.) — Pennsylvania DHIA is proud to announce a new member to its field staff.

The regions Pa.DHIA had used to divide the state were realigned to more evenly distribute the counties among existing managers. Diane McIlwain has been named to head the newly formed Region 6, which will consist of Union,

Snyder, Northumberland, Montour, Berks, Bucks, Schuylkill, Montgomery, Lehigh, and Philadelphia counties.

Diane has been with Pa.DHIA for 18 years. She recently worked as a senior technician in Region 3 and more recently was attending to the daily duties of managing Region 4.

Please help to welcome Diane to

her new position.

Call Pa.DHIA at 800-344-8378 if there are any questions, or to request that a representative stop by the farm to explain specifically how Pa.DHIA records can help.

### Average Farm Feed Costs For Handy Reference

To help farmers across the state to have handy reference of commodity input costs in their feeding operations for DHIA record sheets or to develop livestock feed cost data, here's last week's average costs of various ingredients as compiled from regional reports across the state of Pennsylvania.

Remember, these are averages, so you will need to adjust your figures up or down according to your location and the quality of your crop.

Corn, No.2y — 2.69 bu., 4.82 cwt.

Wheat, No. 2 — 2.59 bu., 4.33 cwt.

Barley, No. 3 — 1.41 bu., 3.01 cwt.

Oats, No. 2 — 1.57 bu., 4.88 cwt.

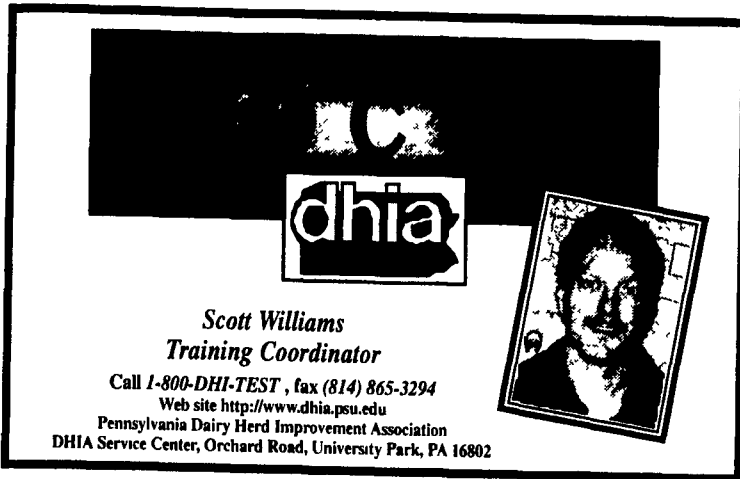
Soybeans, No. 1 — 6.05 bu., 10.10 cwt.

Ear Corn — 82.39 ton, 4.12 cwt.

Alfalfa Hay — 111.25 ton, 5.56 cwt.

Mixed Hay — 100.00 ton, 5.0 cwt.

Timothy Hay — 104.75 ton, 5.24 cwt.

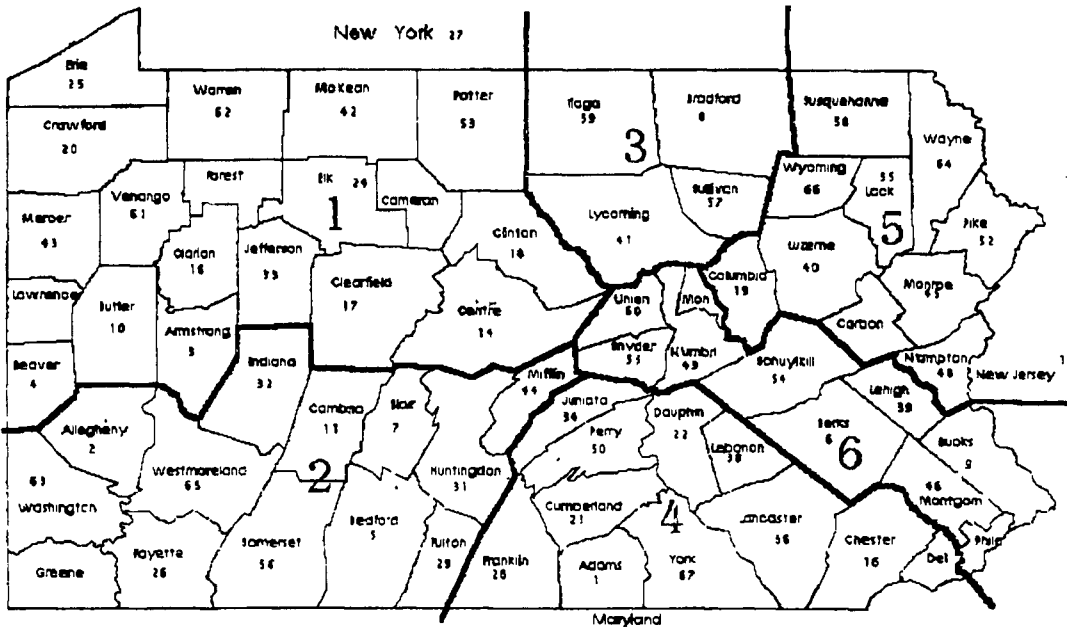


**dhia**

**Scott Williams**  
Training Coordinator

Call 1-800-DHI-TEST, fax (814) 865-3294  
Web site <http://www.dhia.psu.edu>  
Pennsylvania Dairy Herd Improvement Association  
DHIA Service Center, Orchard Road, University Park, PA 16802

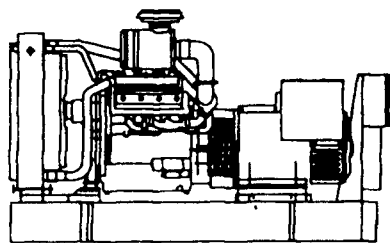
## Region Managers



Region 1	Region 2	Region 3	Region 4	Region 5	Region 6
Dean Aden	Larry Hay	Linda Stucklin	David Shenk	Gary Williams	Diane McIlwain
Route 2	RR 3 Box 39A	RR 6 Box 115	RR 2 Box 5	RR 1 Box 1015	RR 1 Box 219A
Dayton PA 16222	Berlin PA 15530	Wellsboro PA 16901	Newport PA 17074	Starrucca PA 18462	Liberty PA 16930
814-257-8572	814-267-4754	717-724-7173	717-567-9100	717-727-3158	717-324-5160
2301mgr@dha.psu.edu	2302mgr@vm.dha.psu.edu	grandma@epix.net	2304rangr@dha.psu.edu	droogles@nep.net	cow@epix.net
Director of Field	Dean Amuck	Service Center	University Park PA 16802	800-344-8378	dda@dha.psu.edu
Marketing Manager	David Bigelow	RR 2 Box 263	Williamsburg PA 16693	814-832-1907	dab@dha.psu.edu
Training Coordinator	Scott Williams	Service Center	University Park PA 16802	800-344-8378	sgw@dha.psu.edu

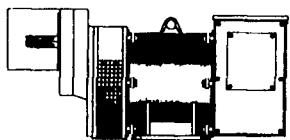
## GENERATOR SYSTEMS

1-800-779-8809

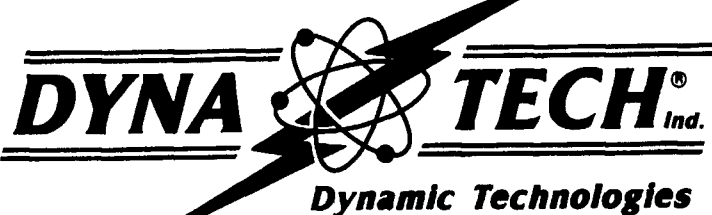


New & Used 5 to 2500 KW  
Diesel • Propane • Natural Gas

24 Hour Emergency Service  
Sales - Installation  
Maintenance Contracts • Rentals



**Tractor Driven**  
Generators 10-150 KW  
1800 RPM Brushless  
New & Used



**DYNA-TECH INDUSTRIES**  
602 E. Evergreen Rd., Lebanon, PA 17042  
717-274-8899 FAX 274-8934

Visit us on The Web Site: <http://www.dynagen.com>  
Ask About Our Lightning & Surge Protection Units  
Panel Mount • Plug-In • Electric Fence Protection



## Superfuel for Super Cows



W-L Research's high quality (HQ) alfalfa varieties deliver high forage yield, superior feed value and outstanding persistence. Top-rated in university trials, **WL325 HQ** is the leader in quality and milk production potential. **WL324** is very winterhardy and is the high yield champion.



Contact your local distributor:  
**Ag-Chem, Inc. at (800) 441-0093 or Agchem Service at (315) 986-2226**