

# Tools for Transition, Expo Topic July 29

**HOLTWOOD (Lancaster Co.)** — Soil quality and soil conservation have continued to be an important issue for farmers, researchers, and the general public. "Soil is my most valuable asset," said Steve Groff, owner of Cedar Meadow Farm, Holtwood.

"I want to farm in such a way that produces a healthy food product, generates an income to live a comfortable lifestyle, and leaves the soil in better condition than when I found it," he said. Groff's "New Generation Cropping System" techniques will be on display at the 5th Annual Lancaster County Conservation District Expo and Field Day, July 29, 10 a.m. - 3 p.m. at Cedar Meadow Farm, Holtwood, Pa.

The event is sponsored by Cedar Meadow Farm, Lancaster County Conservation District, Foundation Earth, and the Pennsylvania Association for Sustainable Agriculture.

The Expo will provide an opportunity to see the farm's unique cropping strategies and proven soil conservation methods with more than 30 agribusiness exhibitors and equipment dealers. Cedar Meadow Farm has been selected as the 1998 Outstanding Cooperator of the Year by the district. It has also been chosen as one of nine farms in the nation to be a Harmony Demonstration Farm, promoting the adoption of technologically advanced and environmentally sound farming practices.

The Conservation Expo is conducted by the Lancaster County Conservation District and promotes conservation education, techniques and practices for farmers, businesses, and homeowners. The Expo will feature the Lancaster County Safe Kids Coalition and children's activities, nutrient management information, groundwater quality and water testing for nitrates, Pennsylvania Septage Management Association, Master Gardeners, Chesapeake Bay Foundation, Donegal Trout Unlimited, and local watershed associations. Participants should bring a pint of water for free water testing and children should bring shoes or sneakers they can get wet for an aquatic study on the farm.

The theme for the Field Day is "Tools for Transitioning" and will showcase equipment and methods of transitioning to less tillage and pesticides for a more environmentally friendly, profitable cropping system. Speakers for the day will include

Warren Thompson, national forage specialist for America's Alfalfa, Kentucky, on no-till establishment of alfalfa and forages and grazing strategies; Dan Towery, national resources specialist from the Conservation Technology Information Center, Indiana, on conservation trends; Marty Campfield, Nutrient Solution in Agriculture, on precision agriculture; Dr. Ray Weil and Joel Gruver, University of Maryland, on soil quality. Three new summer annual grazing crops — spring triticale, Canadian field peas, and sudex — will be available to observe. Local equipment dealers will demonstrate no-till planters, drills, and conservation tillage tools.

The event is designed to give farmers practical information on transitioning to a profitable and

sustainable cropping system, said Groff. "I want people to take home at least one idea that they can apply to their farm to improve the quality of their soil so that future generations will also have the opportunity to earn a living from the land."

Directions to Cedar Meadow Farm: From Lancaster, 272 South to 372 West, 372 West 4.5 miles to Hilldale Road. Turn Right and travel 1.5 mile to Cedar Meadow Farm on right. For more information, call Steve Groff, Cedar Meadow Farm, (717) 284-5152, email: [sgroff@epix.net](mailto:sgroff@epix.net), or Lancaster County Conservation District (717) 299-5361. For more details on the event and "New Generation Cropping System," check out the website: <http://www.cedarmeadowfarm.com>

# Dairy Farm Management Meeting Set

**WAKEFIELD (Lancaster Co.)** — Dairy producers and agri-business people are invited to attend a dairy farm management meeting Wednesday, July 8 at the Ed Zug farm in southern Lancaster County. Purpose of the meeting is to learn how the Zug family uses concepts learned in the Dairy MAP program to manage their lives and their farm business on a daily basis while addressing the multigenerational needs of the family.

The meeting begins at 11 a.m. A picnic-type lunch will be pro-

vided. Reservations are required and can be made by calling the Lancaster County Cooperative Extension office by Monday, July 6; telephone number is (717) 394-6851. Bring your own lawn chairs.

The Zug farm is located about two miles north of Wakefield and one-half mile west of Route 272 at the junction of Pilgrims Pathway and Peters Creek Roads.

This publication is available in alternative media on request.

Penn State is an affirmative action, equal opportunity university.

# Tulpehocken Watershed

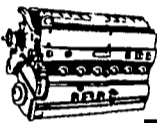
(Continued from Page A21)

owners with expertise and a lot of money to complete conservation systems.

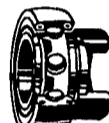
"It's a lot easier to finish these projects where there is help," said Kim Fies of the Berks district.

"Definitely, there are more people doing these projects, after talking to neighbors who know it's a good thing to do," said Charles Wertz of the Lebanon district. "But there's a lot more to do."

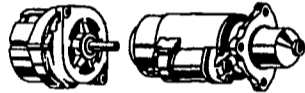
## Quality Assured Case IH Parts BEST PARTS.... BEST DEAL.... BEST VALUE



When You Need Parts,  
Call SALEM For FAST  
Courteous Service.



Express Service To Your Farm....  
Please Call Today.



"Thanks for  
your business!"



# SALEM FARM SUPPLY

Route 22; Salem, NY

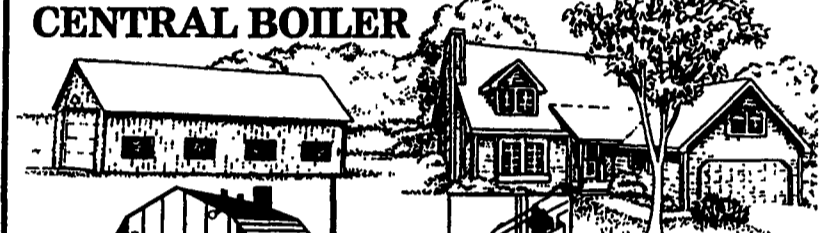
1-800-999-FARM (3276)

FAX: 518-854-3057

CASE CREDIT CARD - FARM PLAN - VISA - MASTERCARD - DISCOVER

CASE III

## Classic OUTDOOR WOOD BURNING CENTRAL BOILER



**HEAT**  
Multi-Story Home, Shop,  
Barn, Domestic Water,  
Pool, Greenhouse, Ect.  
With Clean,  
Safe, Efficient  
Wood Heat

**ELIMINATE HEATING BILLS!**

**KENNETH V. STAUFFER**

R.R. #1 Box 307, Mt. Pleasant Mills, PA 17853

PHONE (717) 539-4606 FAX (717) 539-4703

1-888-539-4606

Please Call For Free Information!

## FREE T-SHIRT

WITH EVERY MOTOR  
PURCHASE NEW  
OR USED.



### ONE STOP Electric Motor Repair

3083 Mt. Pleasant Rd.  
Mount Joy, PA 17552

717-653-1455

FAX 717-653-7275

ELECTRIC MOTOR REPAIR  
REPAIR PARTS  
NEW MOTOR SALES

### SERVICES

#### Rebuilding

- AC & DC Motors
- Forklift Motors
- Generators
- Pumps
- Gear Boxes
- Gear Motors
- Hoists

#### Machine Shop

- Machining
- Milling
- Grinding
- Dynamic Balancing

#### Special Services

- Field Service
- Electronic Board Repair
- Used Motors

#### Rewinding

- AC & DC Motors
- Hermetics
- Generators
- Coils
- Transformers

#### Electrical Contracting

- Individual Wiring
- Equipment Installation

#### Motors

- Leeson
- Baldor
- Leland Faraday
- Leeson & GE Farm Duty
- GE
- Vanguard
- Fasco

#### Controls

- Leeson
- Benshaw

#### Pumps

- Star
- Little Giant
- Hayward Pool & Spa
- Premier

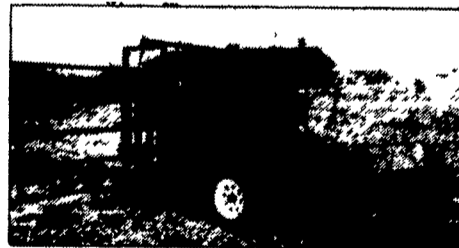
#### Accessories

- Bases
- Carbon Brushes
- Start Switches
- Bearings
- Capacitors
- Pump Seals
- Float Switches
- Brake Kits

## HEAVY DUTY

## HOOF TRIMMING TABLES

Endorsed by the International Hoof Trimming School of Wisconsin



- 2 10-inch lift belts
- 3500 lb. axle with or without brakes



- 12-year building experience in the tables design
- 2"x2" tube frame chute
- chute measures 75"x28"x75" high
- 4" casters for cradle fold-up
- Two hydraulic cylinders for extra stability
- tool box for D.C pump and battery protection
- manure grate to keep work area clean

- fold away side gate
- removable head board
- 45 min. video from International Hoof Trimming School of Canada

Delivery Available

THREE MODELS TO CHOOSE

1. PORTABLE 2. STATIONARY 3. 3 POINT HITCH

## BERKELMAN'S WELDING

RR 7, AYLMEER, ONTARIO, CANADA N5H 2R6

(519) 765-4230