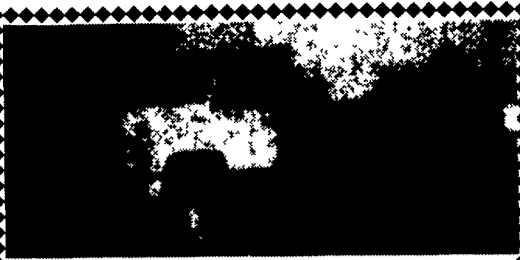


FOR SALE



1996 Chev. 1500 4x4. 5-spd. A/C. 350 V8. Z-71 Pkg.. White. 15,000 Miles. Like New
\$18,900
 Call 717-865-7575



1991 Kodiak
 Cat, 210 Hr., 6 speed, Air, 30,000 GVW, licensed Non CDL, 22 ft. Steel Dump Bed, New Tires \$15,900
 Reuben at Graber Supply
 610-593-3500

35 TRUCKS & TRAILERS

LEFEVER BROS. CHEVROLET CHEVY TRUCKS GEO.

YOUR DIRECT LINE TO GENUINE GM PARTS

(800) 533-3837

When you call the number listed above, you'll reach our wholesale parts specialists, who can help you keep your GM repair work moving quickly

Ask about

- Specializing in GM Medium Duty Trucks, Current and Obsolete.
- \$500,000 Parts Inventory.
- Parts Locator for Those Hard to Find Items.
- We Ship Anywhere, Local Delivery Available.
- Experienced, Knowledgeable Personnel.

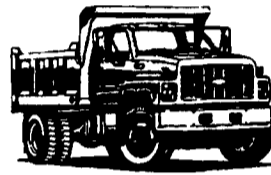
Mon Tues Thurs Fri
 7:30 a.m. - 4:30 p.m.
 Weds 7:30 a.m. - 8:30 p.m.
 Major Credit Cards Accepted

(717) 432-9697

Quality Dealers Since 1921
 406 U.S. Rt. 15 Dillsburg PA 17019



We want your business.



Kodiak Chevy Trucks CAT DIESEL POWER

ARMY TRUCK PARTS

CHAMBERSBURG, PA

**COMPLETE TRUCK INVENTORY
 COMPLETE PARTS INVENTORY
 THE NATION'S LARGEST ARMY
 TRUCK AND PARTS DEALER**



6x6 TRUCKS
 2 1/2 & 5 TON
 UNITS AVAILABLE
 ENGINES
 TRANSMISSIONS
 TRANSFER CASES
 DRIVE TRAIN
 CAB KITS

Army truck parts catalogs available

MEMPHIS EQUIPMENT

821 Lincoln Way West
 P.O. Box M
 Chambersburg, PA 17201

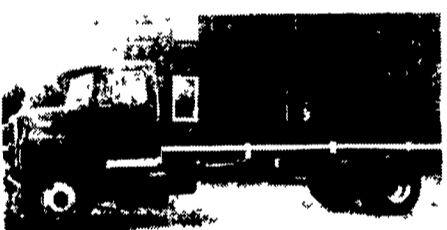
717/263-4194 FAX 717/263-4555



GLENN ALLEMAN, GEN. MGR.
 MARK SIPES, PARTS MGR.



"CLEANEST TRUCKS AROUND"



94 Ford LN8000 C&C 8.3L Cummins, 250 HP, 7 Sp. Trans, Custom Int., PS Air Brakes, A.C., AM/FM Cass. & C.B., Tilt Wheel, GVW 33,000 C to A 186" WB 234"
\$25,500



87 Ford LN8000 C&C 3208T 215 HP, 5 Sp. Trans, Air Brakes, PS, AC, 33,000 GVW, C to A 176", WB 240, Excellent Cond.
\$11,500



88 Int S1900 w/New 10' Dump Bed, DT 466, 5 Spd. Trans, 2 Sp. Rear, Air Brakes PS, 32,800 GVW, 49,000 Miles, Ex. Condition
\$24,500



81 Int. 1800 C&C 3208 Rem 210 HP, 5 Sp. Trans, 2 Sp. Rear, Air Brakes, PS, WB 206", C to A 135" GVW 33,700
\$10,500



1985 L8000 New 10' Dump Complete, Excellent Cond., 3208 Cat, 7 Sp. Trans, GVW 38,400, Air Brakes, PS
\$21,500



1994 Ford LN8000 w/10' Dump, 225 HP Cummins, 5 Spd. Trans, 2 Sp. Rear, PS, AB, A/C, Pintle Hook, 33,000 GVW, 42,000 Miles, Like New, Set Up For Hauling Black Top
\$44,500



1970 Int. 2000 w/10' Dump, 238 Detroit (Rebuilt), 10 Sp. Trans, 2 Sp. Rear, PS, AB, Pintle Hook, Good Dependable Older Truck
\$7,500



1993 Int. 4000 C&C, DT 466, 210 HP, 5 Sp., PS Hyd. Brake (All Disc), A/C, 29,000 GVW, 254 WB, 186 C to A
\$14,500



1986 Int. S1600 C&C, 6.9 Diesel, 5 Sp Trans, 2 Sp. Rear, PS, Hyd. Brakes, 25,000 GVW, 206" W.B., 138" C to A
\$8,500



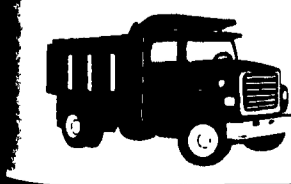
1991 Int. 4900 C&C, DT 466, 5 Sp., PS, Hyd. Brakes (All Disc), A/C, GVW 30,000 W.B. 254" C to A 186"
\$12,500



1988 RD6865 Mack Tri Axle Dump, 17'6" Alum. heated Body, 300 Mack, 6 Sp. Trans, A/C, Set Up For Black Top Hauling, One Owner In Very Good Cond.
\$49,500



1988 Ford F-800 w/12 Dump, 429 V8, Gas, 10 Sp. Trans, PS Air Brakes, 52,000 GVW, 130,000 Miles, Set Up For Black Top Hauling, One Owner In Exc. Cond.
\$15,500



AL HAMILTON MANAGEMENT COMPANY

Used Medium & Heavy Duty Trucks

P.O. Box 157 • 55 Doe Run Road • Manheim, PA 17545
Phone: 717-665-7145 • Fax 717-665-2137