

John Koser's

FOR YOUR HOME IMPROVEMENT NEEDS

LOCATED NORTH OF ELIZABETHTOWN
OPEN MON - FRI 8 TO 6. SAT 8 TO 3

- Kitchen Cabinets
- Plywood & Waterboard
- Asphalt Roofing Shingles
- T 1-11 Siding
- GP Insulation
- Railroad Ties
- Shutters
- Replacement Windows
- Vinyl Siding

Auction
July 11th
9 AM

717-367-0283

Industrial Paint Liquidation

Just received thousands of gallons of highest quality industrial grade paint from military base closing and cancelled government contracts. These paints were designed for extreme duty in military service, making them far exceed typical application in commercial or farm use. Buy now while available-most can be stored for several years.

You can't buy better paint!

Epoxy - \$14/gal.

Polyurethane - \$12/gal

Alkyd Enamel - \$10/gal

Specialty Coatings \$10-\$14/gal

\$40 to \$60 value.

Call for color availability. 10 gallon min. purchase.

2 locations - Honey Brook and Bridgeport, PA

Heritage Equipment, Inc

610-942-4116

HUBER CONSTRUCTION



★ Commercial ★ Agricultural
★ Residential
Builder

Call 717-933-4685 Myerstown, PA

LOOK STEEL BUILDINGS



Clearance on all Canceled & Over Stocked Buildings!

Blow-Out Prices & Quick Delivery!
Call for Building List and Free Brochure:

800-553-7833

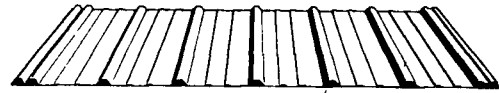
INDEPENDENCE
STEEL PRODUCTS NORTH EAST, INC.

www.ispne.com

Metal Roofing & Siding
25 Year Warranty Painted



Wheeling Centurydrain™ Roofing and Siding



Wheeling Channeldrain™ Roofing and Siding

Galvanized & Painted

1-1/4", 2-1/2" Corrugated. 5-V Crimp

Seamless Rolls 26-1/2" x 50', 28" x 80'

Full Line Trim, Nails, Screws, Windows, Doors, etc.

We Deliver

A.B. MARTIN ROOFING

105 Slate Road, Ephrata, PA 17522

(717) 445-6885 1-(800) 373-3703

Fax (717) 445-7893

Mon. - Fri. 7 AM - 5:30 PM • Sat. 7 AM - 11:30 AM

POLE BUILDINGS



Fully Erected On Your Site
24x24x10 Carriage Style Building
3' Cantilevered Roof on 1-Side
2-9'x8' Steel Garage Doors
1-3'x6'8" 9-Lite Service Door
29 Ga. Painted Steel Roofing & Siding

Only...\$7995

24'x32'x10' is only \$9295

Call Today For Free Information

MUSSER & ASSOCIATES, INC.



SALES

1-800-331-1875

1-717-354-7561

245 Fetterville Rd., East Earl, PA 17519

TIMBERLINE POLE BUILDINGS

Since 1968

Garages - Workshops - Pavilions
Equipment Storage - Horse Barns
Commercial Buildings



FREE ESTIMATES

800/842-0276

POLE BUILDINGS



Horse Barns
Riding Arena
Equipment Storage
Garages
Commercial Buildings

Unlimited Structures, Inc.

800-858-7297



S.M.S BUILDERS

762 Maple Grove Road • New Holland, PA 17557

717-354-8755

Riding Arenas



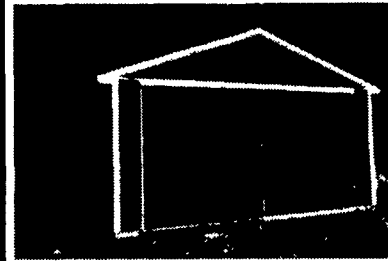
Storage Sheds



Call For Free Estimates

Financing Available

Horse Barns



Stall Kits



BUY FACTORY DIRECT!

UP TO **40% OFF**

SUPER HEAVY STEEL!

- Equipment storage & workshops
- Hay and animal shelters
- 100% made in U.S.A.

SIZES AVAILABLE

2 (25 x 40)	2 (42 x 70)
3 (30 x 50)	3 (45 x 80)
2 (40 x 64)	1 (55 x 120)

Limited time offer

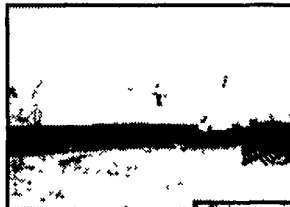


800/825-5059

AMERICAN SHELTERS

THE #1 BUILDING FOR STRENGTH, DESIGN, AND CUSTOMER SATISFACTION

A COMMON SENSE APPROACH
Economical & As Easy To Construct As 1-2-3



About 1/3 the price for covered storage spaces



In most cases, building is Non-Taxable because of its portable classification. Special interlocking rafter system is one of the heaviest on the market today. Available in 20', 24', 30', 35', 37', 42' or 50' widths any length. Many other available options. The unit can be customized to fit your need up to 72' wide.

BUILDING USES:

- livestock housing
- hay storage
- machine storage
- warehouse
- grain storage

"SEE YOUR LOCAL DEALER"

Looking for Dealers in New York, PA, Maryland and Virginia

American Shelters welcomes

Huber's Animal Health Supplies, located at

810 Tulpehocken Rd., Myerstown, PA 17067

(717) 866-2246

(Covering Lebanon, Lancaster, Berks, Schuylkill and Dauphin Counties)

For Dealer Inquiries or Building Quotes Call:

AMERICAN SHELTERS

1-800-491-7221