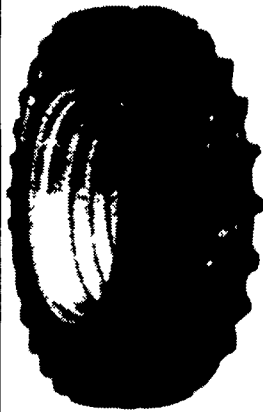


# SUMMER SAVINGS

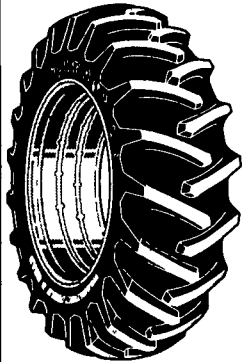
**Firestone**

## FARM HARVEST SPECIALS



### Firestone RADIAL ALL TRACTION 23°

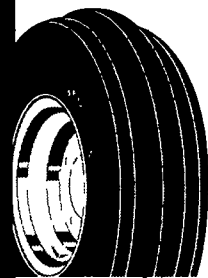
SIZE	PLY	PRICE
18.4R34	★	\$550.00
20.8R34	★	\$800.00
16.9R38	★ ★	\$635.00
18.4R38	★	\$570.00
18.4R38	★ ★	\$640.00
20.8R38	★	\$740.00
20.8R38	★ ★	\$890.00
18.4R42	★ ★	\$719.00
20.8R42	★ ★	\$890.00



### Firestone TRACTION FIELD & ROAD

SIZE	PLY	PRICE
8 3-24	4 Ply	\$109.00
11.2-24	4 Ply	\$139.00
12.4-28	4 Ply	\$169.00
14.9-28	6 Ply	\$249.00
15.5-38	6 Ply	\$259.00
18.4-38	6 Ply	\$379.00
18.4-38	8 Ply	\$425.00
20 8-38	8 Ply	\$520.00

### Firestone 3 RIB CHAMPION GUIDE GRIP™



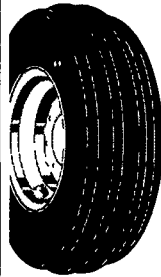
SIZE	PLY	PRICE
4.00-12	4 Ply	\$31.00
5 50-16	6 Ply	\$41.00
6.00-16	6 Ply	\$44.00
6 50-16	6 Ply	\$46.00
7 50-16	6 Ply	\$56.00
10.00-16	8 Ply	\$92.00
11 00-16	8 Ply	\$105.00

### Firestone ALL TRACTION UTILITY Rear Backhoe

SIZE	PLY	PRICE
14.9-24	8 Ply	\$235.00
16.9-24	8 Ply	\$280.00
16.9-24	10 Ply	\$325.00
17.5L24	8 Ply	\$280.00
17 5L24	10 Ply	\$315.00
19.5L24	10 Ply	\$440.00
21L24	10 Ply	\$570.00
21L24	12 Ply	\$580.00
16 9-28	8 Ply	\$275.00
18.4-28	10 Ply	\$450.00

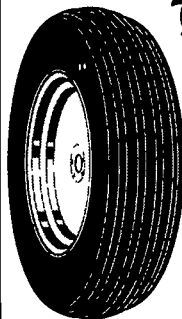
### Firestone FORESTRY SPECIAL

SIZE	PLY	PRICE
18.4-26	10 Ply	\$849.00
23.1-26	10 Ply	\$1,300.00
23.1-26	14 Ply	\$1,600.00
28L26	12 Ply	\$1,400.00
28L26	14 Ply	\$1,700.00
16.9-30	10 Ply	\$840.00
24.5-32	16 Ply	\$1,800.00
30.5L32	12 Ply	\$2,000.00
30.5L32	16 Ply	\$2,350.00
18.4-34	10 Ply	\$1,000.00



### Firestone 4 RIB CHAMPION GUIDE GRIP™

SIZE	PLY	PRICE
9.5L15	6 Ply	\$69.00
11L15	8 Ply	\$86.00
6.00-16	6 Ply	\$43.00
6.50-16	6 Ply	\$52.00
7.50-16	8 Ply	\$68.00
10.00-16	8 Ply	\$84.00
11.00-16	8 Ply	\$105.00



### Firestone RIB IMPLEMENT™

SIZE	PLY	PRICE
9.5L14	8 Ply	\$51.00
9.5L15	8 Ply	\$45.00
11L15	8 Ply	\$46.00
12.5L15	8 Ply	\$69.00
12.5L15	10 Ply	\$71.00



- QUALITY
- SERVICE

**SAFEMARK**

- DEPENDABILITY
- ECONOMY

Camp Hill, PA 17011

CALL 1-800-PFB-TIRE For Dealer Nearest You

## PARTICIPATING DEALERS

**ADAMS**  
Biglerville Tire & Auto  
Biglerville, PA 17307  
717-677-8338

**INDIANA**  
Allegheny Farm Service  
Marron Center, PA  
15370  
412-397-2660

**BLAIR**  
Rhodes Farm Supply  
Williamsburg, PA  
16693  
814-832-2491

**LANCASTER**  
Leola Tire Service  
Leola, PA 17540  
717-656-2574

**BRADFORD/SULLIVAN**  
Fulmer Bros Tire  
Service  
Wysox, PA 18859  
717-265-6159

**LEBANON**  
Lebanon Valley  
Implement, Inc  
Richland, PA 17087  
717-866-7518

Histand's Farm &  
Home Service  
Rome, PA 18837  
717-744-2371

**LEHIGH**  
Joe's Battery & Tire  
Allentown, PA 18103  
610-437-4961

**BERKS**  
Kantner's Tire Service  
Shoemakersville, PA  
19555  
610-562-2567

**NORTHUMBERLAND**  
Rovendale Supply  
Watsonstown, PA 17777  
717-538-5521 or  
717-742-7521

**BUCKS**  
Miller Tire & Auto  
Blooming Glen, PA  
18911  
215-257-4307  
1-800-891-0059

**PERRY**  
Smith Farm &  
Equipment  
Newport, PA 17074  
717-567-3562

**CAMBRIA**  
Al's Tire of Barnesboro  
Barnesboro, PA 15714  
814-948-7880

**SCHUYLKILL**  
Charles Snyder, Inc.  
Tamaqua, PA 18252  
717-386-5945

**CENTRE**  
Dunkle & Grieb  
Centre Hall, PA 16828  
814-364-1421

**UNION**  
Mifflinburg Farm  
Supply, Inc  
Mifflinburg, PA 17844  
717-966-3114/3115

**CHESTER/DELAWARE**  
S G Lewis & Sons  
West Grove, PA 19390  
610-869-2214

Allen Hoover  
Mifflinburg, PA 17844  
717-966-3821

Stolzfus Farm Service  
Cochranville, PA 19330  
610-593-2407/2408

**WESTMORELAND**  
J&M Machinery Co  
Greensburg, PA 15601  
412-668-7850

**COLUMBIA**  
Steve Shannon  
Tire Co., Inc.  
Bloomsburg, PA 17815  
800-343-TIRE

**YORK**  
Wagner's Mobile Repair  
Shrewsburg, PA 17361  
717-235-5094

Steve Shannon  
Tire Co., Inc  
Route 487  
Benton, PA 17814  
717-925-2821

**NEW JERSEY**  
Farmers Brokerage &  
Supply  
Allentown, NJ 08501  
609-259-7324

**CUMBERLAND**  
Barrick Tire Sales  
Newville, PA 17241  
717-776-5762

Tire King  
Sussex, NJ 07481  
201-875-5250

**DAUPHIN**  
Lapp's Tire Service  
Halifax, PA 17152  
717-362-3115

**MARYLAND**  
Rigdon Tire Service  
Street, MD 21154  
410-452-5979

**Firestone**

THE LEADER IN THE FIELD