



JUNE 29-JULY 5, 1998

CANADA DAY, JUNE 1.

DOG DAYS OF SUMMER

July's Dog Days commence on July 3, just 24 hours before the Independence Day fireworks begin. Despite Dog Days representing the hot, sultry days of summer, they occur on the same date that Earth reaches its farthest distance from the Sun, or aphelion, when the distance stretches to 94,512,258 miles. By comparison, January 4, 1998, found Earth a mere 91,400,005 miles away from the Sun. According to the Romans, however, the Dog Star, Sirius — the summer sky's brightest star — added its heat to the summer from July 3 to August 11, making for that sultry weather



As the Dog Days commence, so they end.

TIP OF THE WEEK

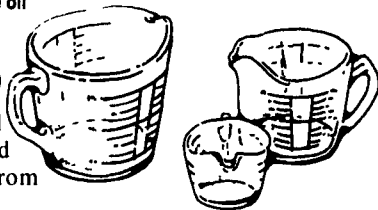
To ease a mild sunburn, wash the skin with apple cider vinegar.

CORN & BLACK-BEAN PITAS

- 4 ears fresh corn (or 1 can kernels)
- 3 cups (or 2 cans) cooked black beans
- 1 cup chopped red onion
- 1 cup diced celery
- 3 tablespoons balsamic vinegar
- 1 tablespoon olive oil
- 2 ounces feta, crumbled
- 2 pitas (6-inch ea.)

cobs. Combine corn with remaining filling ingredients and toss well. Cut pitas in half and open the pockets. Spoon the filling into the four pita halves.

Makes 4 servings.



Boil corn until done, cool, and cut kernels from

The OLD FARMER'S WEATHER PROVERBS



Rain on first Dog Day means rain for 40 days after.

Whatever July and August do not boil, September cannot fry.

If it rains on St. Mary's Day (July 2), it will rain for four weeks.

Got a Question? Every day, the editors of *The Old Farmer's Almanac* answer a question on the Internet. All questions are archived there as well. See Web site address below

Lebanon Valley Livestock

Fredericksburg, PA
June 23

Report Supplied by Auction

STEERS: CHOICE 62.50-64.00; SELECT 60.00-62.25.
HOLSTEINS: CHOICE 53.00-54.50; SELECT 50.00-52.50.
HEIFERS: SELECT 51.00-55.50; STANDARD 45.25-47.50.
COWS: BREAKING UTILITY AND COMMERCIAL 37.25-40.00, ONE AT 46.00; CUTTER AND BONE UTILITY 36.00-37.00; CANNER AND LOW CUTTER 34.00-36.00; SHELLS 28.00-34.00.
BULLS: YG#1 1450-2430 LBS. 50.25-51.00; YG#2 1200-2415 LBS. 44.75-48.75.
CALVES: STANDARD AND GOOD 80-95 LBS. 34.00-42.00.
FARM CALVES: #1 HOLSTEIN BULLS 95-115 LBS. 90.00-102.50, #2 HOLSTEIN BULLS 95-115 LBS. 65.00-85.00; #1 HOLSTEIN HEIFERS 90-105 LBS. 87.50-102.00.
HOGS: BARROWS AND GILTS US#1-3 244 LBS. 41.25; US#1-3 280 LBS. 40.00.
SOWS: US#1-3 470-610 LBS. 25.00-25.75 AND 365 LBS. 26.50; US#2-3 455-465 LBS. 22.75-24.75.
BOARS: 690 LBS. 17.00, 242 LBS. 21.00.
SHEEP: GOOD AND CHOICE 35-45 LBS. 90.00.
GOATS: SMALL 26.00 EACH.

New Holland Sales Stables

Monday, June 22, 1998

Calves Sheep Goats

Today	218	1025	982
Last Week	205	734	1167

CALVES: COMPARED TO THURS.'S AUCTION, VEALERS AND SLAUGHTER CALVES STEADY. DEMAND FAIR FOR HOLSTEIN BULL CALVES RETURNING TO FARM. HOLSTEIN HEIFERS WERE NOT WELL-TESTED. VEALERS: CHOICE AND PRIME

250-350 LBS. 85.00-105.00; GOOD TO LOW CHOICE 175-350 LBS. 65.00-85.00; HIGH GOOD AND LOW CHOICE 80-110 LBS. 25.00-40.00; STANDARD AND LOW GOOD 60-85 LBS. 15.00-25.00.
SLAUGHTER CALVES: GOOD AND CHOICE 250-400 LBS. 60.00-75.00; UTILITY AND GOOD 250-350 LBS. 40.00-60.00.
RETURNED TO FARM: HOLSTEIN BULLS 90-125 LBS. 85.00-99.00.
SHEEP: COMPARED TO THURS.'S AUCTION, SLAUGHTER LAMBS TRADED 5.00-10.00 HIGHER. SLAUGHTER EWE MOSTLY STEADY. SLAUGHTER LAMBS: CHOICE AND PRIME 2-3 40-60 LBS. 100.00-125.00; 60-90 LBS. 90.00-100.00; 90-120 LBS. 85.00-95.00.
SLAUGHTER EWES: GOOD AND CHOICE 1-3 YEARLINGS AND 2 YEAR-OLDS 40.00-75.00; GOOD AND CHOICE 1-3 25.00-40.00; 3 TO MOSTLY 4 10.00-25.00.
GOATS: BY THE HEAD, LARGE BILLIES 100.00-140.00, MEDIUM 60.00-100.00; CHOICE AND PRIME MUTTON 65.00-85.00; LARGE NANIES 50.00-65.00, MEDIUM 35.00-50.00; CHOICE AND PRIME YEARLINGS 50.00-75.00; CHOICE AND PRIME KIDS 35.00-60.00, GOOD 20.00-35.00.

Belleville Livestock

Belleville, Pa.

Wednesday, June 24, 1998

Report supplied by Auction

CATTLE: 274...SUPPLIED BY THE AUCTION.
SLAUGHTER STEERS: HIGH CHOICE AND PRIME 2-4 1200-1450 LBS. 62.00-64.50, CHOICE 2-3 1100-1250 LBS. 58.00-62.00.
HOLSTEINS: CHOICE 2-3 1050-1300 LBS. 53.00-55.00, SELECT 1-2 45.00-51.00.
HOLSTEIN HEIFERS: SELECT 1-2 43.00-48.00.
COWS: BREAKING UTILITY AND COMMERCIAL 2-4 34.50-38.00, ONE 39.75, CUTTER AND BONE UTILITY 1-3 31.00-36.25, CANNER AND LOW CUTTER 1-2 28.00-33.00. SHELLS DOWN TO 22.00.

BULLS: YG#1 1100-1300 LBS. 44.00-47.50, YG#2 1300-1500 LBS. 40.00-43.00.
FEEDER CATTLE: STEERS 60.00-68.50; BULLS 50.00-59.00.
CALVES: 117...VEALERS STANDARD AND GOOD 85-110 LBS. 22.00-26.00, UTILITY 60-80 LBS. 15.00-20.00.
FARM CALVES: #1 HOLSTEIN BULLS 95-110 LBS. 75.00-104.00, #2 80-100 LBS. 30.00-70.00.
HOGS: 35...BARROWS AND GILTS US#1-3 230-260 LBS. 40.00-41.00.
SOWS: US#1-3 300-450 LBS. 30.00-34.00.
BOARS: 300-500 LBS. 14.00-18.00.
FEEDER PIGS: 104...US#1-3 30-70 LBS. 23.00-48.00 PER HEAD.
SHEEP: 15...SLAUGHTER LAMBS CHOICE 70-90 LBS. 82.00-90.00.
SLAUGHTER SHEEP: 15...SLAUGHTER LAMBS CHOICE 70-90 LBS. 82.00-90.00.
SLAUGHTER SHEEP: 22.00-31.00.
GOATS: 46...LARGE BILLIES 80.00-107.00, MED. 72.00-86.00, LARGE KIDS 33.00-52.00, SMALL 12.00-27.00 PER HEAD.

New Holland Dairy

New Holland Sales Stables

Wednesday, June 24, 1998

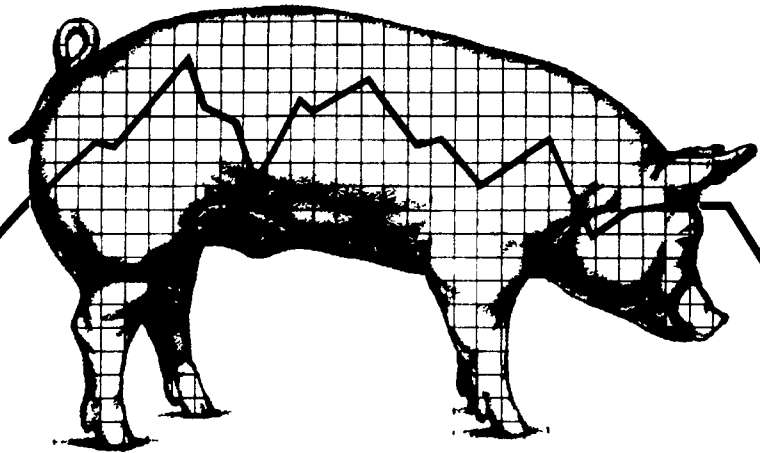
Report supplied by auction

228 DAIRY COWS, 114 HEIFERS, 8 BULLS. MARKET STRONGER.
LOCAL FRESH COWS 525.00-1250.00.
SPRINGERS 625.00-1250.00.
FRESH HEIFERS 625.00-1325.00.
UPSTATE LOADS FRESH 1025.00-1550.00, 2 AT 1675.00-1850.00.
BETTER FRESH COWS 1500.00-1850.00.
HERD OF 28 HEAD, ALL STAGES, 675.00.
SPRINGING HEIFERS LARGE 960.00-1175.00, SMALL 575.00-850.00.
SHORTBRED HEIFERS 610.00-1010.00.
OPEN BREEDING AGE HEIFERS 595.00-650.00.
SMALL OPEN HEIFERS 400.00-510.00.
BULLS 375.00-575.00, PUREBREDS 425.00-925.00.

United Feature Syndicate

(Printed in the U.S.A.)

200 Madison Ave
N.Y., N.Y. 10016
(212-293-8500)



HOW HAS YOUR HOG OPERATION CASH FLOW BEEN?

Purina Mills, Inc.

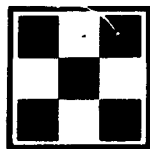
CFA PROGRAM

Offers Stability
To Your Marketing

1st Qrt 1998 PRICES

MARKET PRICE \$36.75/cwt

PURINA CFA \$50.39/cwt



Call now to get the details on how you can even your cash flow with Purina Mills, Inc. CFA Program

PURINA MILLS, Inc.
800-873-5300

Manufacturing Facilities: Lancaster, Harrisburg, Hagerstown, Wyalusing and Knoxville

Painting - Sandblasting - Power Washing

Farm Buildings - Deck - Fences - Masonry Walls

Specializing in roof painting & coating

Amos Fisher

303 Pequea Valley Rd.
Kinzers, PA 17535
717-768-3722

Forney Longenecker
Vice President/Financial Consultant
Commodities Only

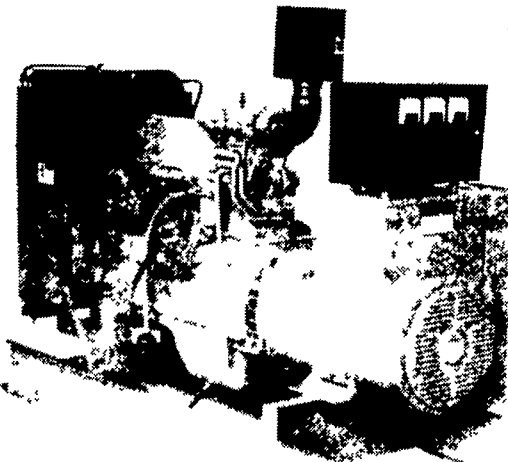
SMITH BARNEY

717-295-8914 • 800-441-1997

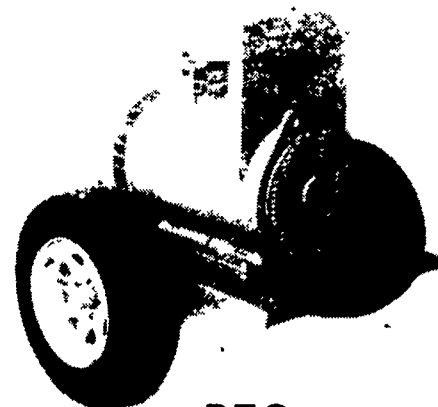
A Member of TravelersGroup

SMITH BARNEY INC
29 East King Street
Suite 200
Lancaster, PA 17602-2852

Agricultural Generators



Automatic
L.P. Gas, Diesel, Natural
Gas Generators
5 to 2,000 KW



P.T.O.
Generators
25 to 100 KW

Service - Rental - New - Used

PENN POWER SYSTEMS

Power Generation Systems Specialists

Call Leonard Martin 717-866-6404