

MAILBOX MARKET FOR SALE

Various types and sizes air dried lumber, come look, make offer! Reasonable, must clean our shed 610-756-6622 Berks Co
Model 760 Remington 270 cal 3-9 Bushnell scope, \$400 717-299-2673 Lanc Co
Ruger model 77, 22 Hornet w/3x9 Leopold scope, extra ammo, sling, good shooter, \$475 or good offer 717-949-2415 Leb Co
Case IL-100 ditcher, good cond, \$1500 717-784-1779 Col Co
Winco generator 15-25 on cart w/power take off shaft 610-926-5547 Berks Co
Tires 11 2x24 rear, 5 50x16 front, approx 50%, fits JD 40, make offer Eves 717-445-5297 Lanc Co
Horse drawn carriage, hyd brakes, shafts and tongue 717-662-2508 Troga Co
Poly 300 gal storage tank, like new, \$200 717-445-6066 Lanc Co
Spotted Nubian goats, 1 six weeks and 1 yearling, also pedigree Rex rabbits, several colors avail 717-463-3296 Jun Co
Endless rubber flat belt, 40' long, 6" wide, best offer Hannah Esh, 870 N College, Myerstown, PA 17067 Leb Co
Boat, 16' Lonestar, 60 hp Johnson, roller trailer, \$1200 OBO 717-766-2772 Cumb Co
Purebred Saanen goats, does, bred and open doelings, doe kids 610-562-8127 if no answer leave mssg Berks Co
Field Queen forage harvester, 3 heads, new knives 717-523-0352 Union Co
Broccoli, cauliflower, cabbage plants Taking orders now! 717-354-2167 Lanc Co
Pequea 710 hay tedder, exc cond, stored inside \$1200 717-889-3197 Schuyl Co
Porche 1979 928, V8, 5 spd, rare minerva blue souther car, showroom cond, driven weekends, car shows only, \$11,000 610-670-9544 Berks Co
1945 Huber road maintainer, 1969 Mercury conv, old iron kettles w/cows head and stove underneath 610-987-6731 Berks Co
A/C D17 gas w/front w/loader, good rubber, garage kept, 7' mower, 6' blade, 3-16" plows, 3 pt, adapter chains, other access \$4500 814-448-2381 Huntg Co

Chevy Van 5 7L, V8 auto, 12 pass, a/c, cruise, only 42k orig mi, must see, \$7000. 610-255-4432 Chester Co
Mixed hay square bales, 3'x3'x8', Nubian billy goats 717-865-3203 Leb Co
1990 Volvo twin screw 350 Cummins conv tractor furring, \$14,500 compl rear axle assembly, single position air controls, \$1000 717-838-1724 Leb Co
Yates G-77 straight line rip saw, good shape, \$2500 607-967-8321 Cherango Co
JD 2440, 146 loader, good cond, new batteries, clutch, starter, seat, flywheel ring, new paint, \$12,900 717-292-0560 York Co
Oliver 24' wood planer w/grinder, \$4200, Oliver 18" bandsaw, \$850, Delta Unisaw, \$800 Dewalt 16" radial arm saw, all 3 ph 717-339-5777 North'd Co
MF 300 combine, Ford 900 lime spreader truck, 1973 717-294-3322 Fulton Co
72 GMC 10' dump, 238 diesel engine, 10 spd trans, \$3000, 10B Fiat Allis trac loader, \$9000 717-766-0426 Cumb Co
6 ea 12 ply tires on Budd wheels, \$140 ea, hyd lift-gate, \$500, 13 spd Road Ranger trans, \$700, porch glider, \$35 717-369-4541 Frankl Co
Singer sewing machine, treadle w/attachments in wooden box, silver trim & stenciling on head, oak cabinet, \$100 717-354-3155 Lanc Co
5 bicycles, 2 girls, 3 boys, 1 - 12 spd, 4 10-spd, \$30 ea OBO 717-786-4047 Lanc Co
McCormick Deering 10-20 tractor for parts, very good rubber wheels, \$300 OBO 873-584-6140 Morris Co
Little Giant elevator, 24', 1 hp motor, shed kept, cost \$500 717-235-3505 York Co
1986 Chev 3/4 T wood stake truck, V8, auto, good cond, \$2500, Ford 4500 loader tractor, good cond, \$3500 610-923-3719 Chester Co
Wheelhorse 935, no deck, parts tractor, \$165, Wheelhorse V70, needs work, \$165, Briggs 8 hp, vertical shaft engine, \$65 90-236-2297 Hunt Co
8 yr old pony, good driver, also rides safe for children, \$600 Dan Yoder, R#1 Box 193, Thompsontown, PA 17094 Jun Co
Riverside summer cottage on farm Wooded lot, 2BR, w/sunroom, basement well oil heat, very good cond 717-656-2995 Lanc Co

Tri-axle trailer, 18000 GVW pintle 8x18' ramps, \$1595, also 6x18 ramps, 7000 GVW pintle, \$1400 610-582-4344 or 7289 Berks Co
Laying hens, 1 yr old, brown & white egg layers, still laying 610-488-6816 Berks Co
MF 699 4x4, good cond, 2500 hrs, 95 hp, tires like new, #238 loader, \$18,000 610-589-5695 Leb Co
Browning model 425, 30' ported barrels, 12 gauge over and under shotgun, new cond, \$1,150 610-469-8619 Chester Co
1989 Ford F350 4x4, PS, PB, air, 92K mi, new engine, \$9,500 610-756-0052 Berks Co
Freezer, 21 cu ft, Frigidaire, exc cond, \$100 610-687-1988 Chester Co
8 mo old Beagle dog, can be registered, also 100 gal gas tank w/pump 717-367-2015 Lanc Co
Hay by the bale at barn, made 1998, NuRain Oh mixed hay Brom Timothy some Alfalfa, \$2/bale 717-432-9056 York Co
Roping saddle, 15-1/2 seat breast collar, bridle, 2 pads, 1 pair ladies chaps, all in exc cond Eves 717-599-5972 Dau Co
Oliver 3-beater manure spreader, good working cond, \$700, IH 3x16 semi-mount plow w/cylinder, new bottoms, \$750 717-647-4229 Schuyl Co
Case IH 1494, 1600 hrs, powershift, IH 666 NH 790 harvester w/heads, exc, Badger 950 950 tandem silage wagon 717-734-3829 Jun Co
Honda 3-wheeler, \$500 717-547-4494 Frankl Co
Dog pen, \$25, cash register, \$35, 36" tables, chairs, grass sprayer for tractor, \$25, bar stools, \$15 610-488-1365 Berks Co
Farmall 300, very good cond, \$1350, D-I Case tractor, runs, \$450, 1978 Ford seat, vam good, \$550 717-527-2341 Jun Co
Farmall B incl plow, cultivator, good shape, \$1500, 1986 Chevy p/u, \$2300 OBO 610-845-3987 Berks Co
600 gal milk tank model RFB600 milkeeper w/compressor, \$800 OBO 717-527-4403 Jun Co
White New Zealand bunnies, rabbits, meat, show, breeding stock, bred does also for sale 717-865-5511 Leb Co
Angora X Pygmy goats, \$50, cheap sheep, \$50, Bantams, \$2, Louet spinning wheels, \$87 Saxony, \$300, S15, \$175 410-658-4009 Cecil Co

Australian cattedog pups, males & fem, reds and blues, exc dispositions, from working bloodlines, vaccinated, wormed, health guar 814-349-5536 Centre Co
Fifteen southdown wether lambs, plan ahead for K I L E Louisville, PA Farm Show Also breeding stock Scenic View Farm, 724-459-5254 Indiana Co
4 nice mares, 2 Percheons & 1 Belgian, approx 1400 lbs 814-784-5872 Bedford Co
GQF incubator and hatcher, both exc cond, \$300 for both, also Avid microchip reader, new \$200 Eves, 717-957-2766 Perry Co
Herd of 40 Jersey cows, large, also 8 cow surge milking parlor, After 8 pm 717-965-2461 Susq Co
NH 1495 haybine diesel, hydrostatic, 1660 hrs, \$7000. 610-286-5638 Lanc Co
6'x12' farm wagon, \$150, #611 AC tractor/mower, \$700, brand new Steam-Jet cleaner for engines, \$1200 OBO 717-933-4027 Berks Co
JD 2240 640 hrs, 50 hp w/145 loader, exc cond, \$13,500, 3 pt, 7' blade, \$100, JD belt pulley 717-423-6355 Cumb Co
Cherry firewood, \$20 p/u load, girl's 10 spd, mt bike, \$100, man's blk leather jacket, size XL, \$50 610-488-6284 Berks Co
Old 4 wheel New Idea spreader, sawed, seasoned locust post, AC side mounted and rear mounted mowers 717-786-7143 Lanc Co
NH #110 grinder w/elevator, Case SC, like new tires, Case L, with rare steel wheels 717-648-7015 Schuyl Co
424 diesel w/1500 loader hyd dump runs & operates need little fix-up, \$2500 firm, cab for Cub Simms 300 610-847-5353 Bucks Co
Almost new tall deck 427 Chevy truck engine, compl, still in truck, can hear run, e cond, \$1500 eves, 610-767-8370 Northampton Co

Ford 9N tractor, good cond., new battery, new 12x alterna-tor, good tires, ready to work, \$2100. 610-495-5359 Chester Co
JD backhoe buckets, 12"-36" pens and cages, many sizes, some w/stainless steel wire 3159 Bristol Rd., Chalfont, PA 18914 Bucks Co.
NH 355 grinder-mixer w/scales, exc cond, reason - sold livestock Case coultter, 5-tooth chisel, good 717-367-4454 Lanc Co
JD 272 grooming mower, 6' cutting, 3 pt hitch, new blades, new pulleys, new bell, exc cond, \$1500 717-469-1505 Dau Co
Kruger trailer 12-1/2' bed, dual axle, 4 wheel brakes, ramps, GVWR 8250 capacity, GAVW 3500 lbs, good cond 610-286-5885 Berks Co
NH 489 haybine, looks fair, very good conditioner rolls, JD 830 self-propelled haybine, 12 ft cut, new knife, \$1250 ea. 717-335-9620 Lanc Co.
600 gal Mueller bulk tank, good cond, \$1500 OBO Amos S Esh, 371 Bell Rd, Christiana, PA 17509 Lanc Co
Pullets, brown egg, take one or hundred, 18 wks old by 7/20 Shirks, 717-445-6423 Lanc Co
Shopsmith Mark V incl 18" jigsaw jointer, beltsander shaper, tablesaw, many new bits and blades, new bearings, must sell. 717-354-6226 Lanc Co
Blue Fin, 14 ft boat, 35hp Force motor, trailer, don't use, \$950 717-456-5858 York Co
JD 3010 needs engine rebuilt, \$2000 814-674-8119 Cambria Co
Good mixed hay, square bales, \$1.50 ea, at farm, \$1.75 ea delivered McConnellsburg, Three Springs, Orbisonia area 717-762-1323 Huntg Co
1981 GMC window van in good cond, 108,000 mi, \$800. No Sunday calls 717-922-1135 Union Co

Camer air cond, 3 ton, works excellent, 220v, \$350; aluminum bender, works OK, 10', \$75. 610-932-0600/4513 Chester Co
NH 1880 SP forage harvesters, 1 CAT diesel, 1 Ford gas, both useable, 3 RN heads, \$4500 OBO ea 717-899-7929 Mifflin Co
Hesston haybine 1150, 12 ft, good cond, \$3200 Call 717-866-5807 Leb Co
MF#12 baler w/thrower, 320 Hesston self-propelled haybine, 12 older wheel horse tractor to be restored 717-866-6744 Leb Co
Plow AC 2-14 plow, \$65, mower Ford 501, \$200, windows Thermo 16x48, Free, table 4x8 formica hobby, produce 717-266-4490 York Co
Natural colored rams, \$60 ea, 1985 Ford F250 6.9L auto, \$3500; Farmall M, good cond, \$1800 717-292-5250 York Co
1997 Corn Pro tailor dull wheels, 250 mi, goose neck, adjustable beaver tail and ramps, \$6,000 John Parson 304-735-3352 Preston Co
JD 318 riding mower is in nice cond, \$2850 717-354-5489 Lanc Co
Power steering unit for Farmall M, \$400, also other M and H parts, Case DC and SC parts 717-259-2943 Lanc Co
Goats buck kids white 5 wks, mother good milker bottle fed, very friendly Sannan and Alpine, \$40 ea 717-337-0348 Adams Co

JAMES & CLARK, LLP Attorneys-At-Law

Mark L. James James R. Clark

- Estate Planning for Farm Families
• Wills, trusts and tax planning
• Charitable giving
Business Planning for Farm Families
• Farm partnerships and corporations
• Succession Planning/Farm Transfers
Real Estate
• Tax-free exchanges of real estate
• Real estate settlements
• Tax planning for sale of conservation easement
Estate Settlements
• Prompt and courteous settlement
• Tax planning during settlement

1907 Division Hwy Ephrata, PA 17522 (717)355-2800

SPORTFISHING CHARTERS
Inshore and Offshore 6 PASSENGERS
From CAPE MAY, NJ on the 32' TOPAZ
MAID MARIAN CHARTERS MOUNT JOY, PA
Flounder • Weakfish • Marlin • Tuna • Blues
Captain Jim McKinley (609)624-1461

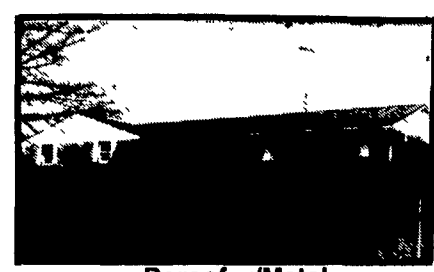
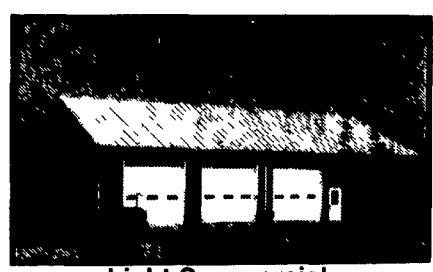
Diesel Power Systems
Since 1982
415 PETERS ROAD GORDONVILLE, PA 17529
Specializing In MID RANGE • HEAVY DUTY DIESEL ENGINES POWER UNITS PTO's PUMP DRIVES CLUTCH REDUCTIONS SALES - SERVICE
Large inventory of new & used parts & engines

JAY ZEIGLER Standing Seam Metal Contractor

Since 1963 "Simply The Very Best Roof Available"

FREE Estimates

Call For Information



Use on Barns Or Garages

Light Commercial.

Reroof w/Metal

ADVANTAGES:

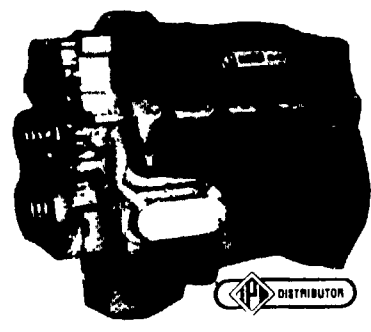


New Construction

- Roof can last for 100 years - cost efficient
• Can be installed over existing roof (Asphalt, roll roofing, wood shingles)
• Is environmentally safe
• Beauty - colorful (galvanized, 40 lb. terne, terne-coated stainless, and painted steel in over 20 different colors.)
• Can be installed on flat roof with as little as 1/2" pitch per foot.
• Good for homes, farm buildings, garages, commercial buildings.
• Sheet in continuous length installed with concealed fasteners with double lock seam for water tight application.

PO Box 231 Rehersburg, PA 19550

(717) 933-4666 (717) 933-5305 FAX/PHONE



INCREASE LIFE AND EFFICIENCY ON EQUIPMENT WITH



"THE FIRST IN SYNTHETICS" MOTOR OILS AND LUBRICANTS INDUSTRIAL - AGRICULTURAL - COMMERCIAL

- COMPRESSOR • HYDRAULIC • GEAR • TRANSMISSION • GREASE • 2 CYCLE • BAR & CHAIN • CLEANERS • FULL FLOW, BY PASS & AIR FILTERS • FUEL ADDITIVES

For More Information Write to Address Above or Call (717) 354-4801 Service