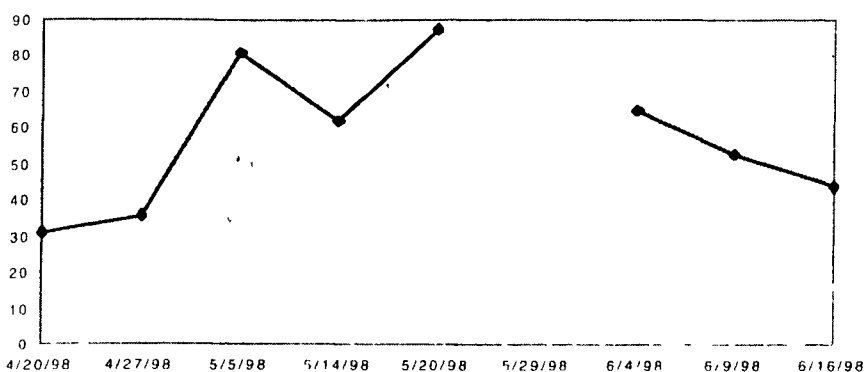


Pasture Growth Rates Recorded In Penn State Study

(Continued from Page A28)

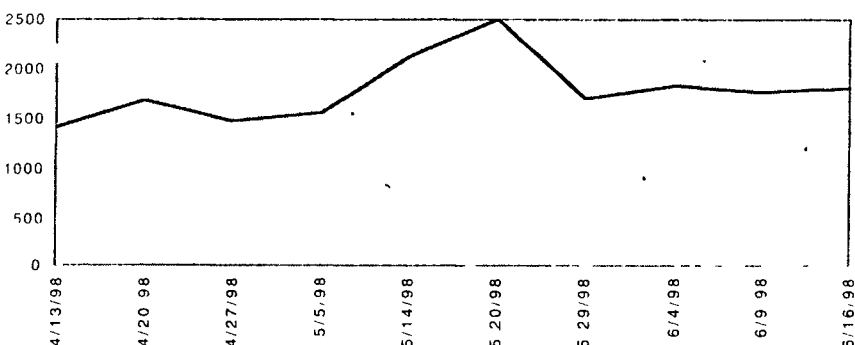
Tioga County, The break in the growth line chart is were the paddocks measured were all grazed and thus there was no growth that week

Tioga Corr. Ave Growth/day



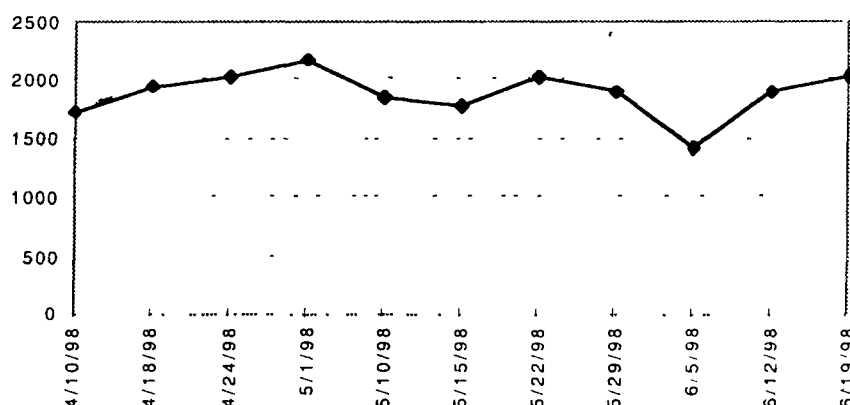
Tioga County, The pasture cover increase this spring as the grass growth increased, the drop in cover on May 29 is mostly from a cooler dry weather that slowed the the growth and the cows were on the paddocks a little longer to clean them up changed from whole day to half day grazings

Tioga Ave Pasture Cover



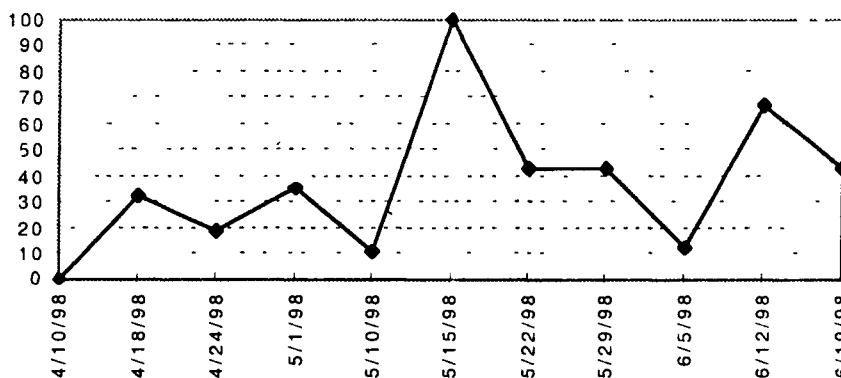
Somerset County has clipped the pastures in late May and you see how there pasture cover declined Notice how Even the cover was thru the spring a sign of a controlled stocking

Somerset Ave Pasture Cover



The spike on May 15th is from several paddocks growing well and the week before almost all the measured paddocks were grazed, thus not many paddocks were in the average

Somerset Corr. Ave Growth/day



Entries Due July 1 For National Corn Yield Contest

ST. LOUIS, Mo. — It's the corn grower's equivalent of the World Series, Super Bowl, and Stanley Cup, all rolled into one. But if they want to play in this game, they need to be entered in the National Corn Yield Contest (NCYC) by July 1.

Sponsored by the National Corn Growers Association (NCGA),

this popular contest recognizes America's top producers of the nation's number one crop — corn. The information is then shared with all NCGA members in the annual Corn Yield Guide, helping growers learn from each other how to produce the highest yielding, most profitable corn crop. The goal of the NCYC is to edu-

cate farmers on methods to improve production and profitability, while addressing environmental concerns.

"Market pressures today are forcing growers to become increasingly competitive," said John Green, director of production and education for the NCGA. "This contest is an excellent way for

them to test their own production methods against their peers and to learn from the successful techniques of others."

To be eligible, initial entry forms must be postmarked no later than July 1, 1998, and postharvest entry forms no later than Dec. 1, 1998.

Winners will be announced in February at Commodity Classic, the annual combined convention and trade show of the NCGA and American Soybean Association being held in Albuquerque. Along with national recognition, winners also receive significant prizes from participating seed and crop protection companies.

"We encourage NCYC entrants

to gain valuable hands-on experience with new production methods, such as no-till or narrow-row by trying them first on contest plots before adopting them for full farm-scale use," said Green.

The nine contest classes include both dryland and irrigated categories for conventional till, mulch-till, no-till and ridge-till production practices. Farmers compete only with those in similar growing regions, thus greatly increasing their prospect of winning.

For more information or entry forms, contact NCGA at (314) 275-9915, ext. 129 or visit their web site at <http://www.nega.com>.

USED/REBUILT MOTORS FOR SALE

1 and 3 phase
1/2 to 10 HP

HERSHEY
EQUIPMENT CO., INC

SYCAMORE IND. PARK
255 PLANE TREE DRIVE
LANCASTER, PA 17603
717-393-5807 x 3050
FAX 717-291-1534

Service Tech
On Call
24 Hrs
7 Days a Week

Hours 6:30 - 5 PM
Closed Sat & Sun



Hard-working, fun-loving.

Xplorer 300

- 300 2-stroke, air-cooled, oil-injected engine
- Exclusive, long-travel rear suspension (8.5 inches)
- Tight-turning MacPherson strut front suspension
- Push-button, true 4-wheel drive
- Automatic transmission
- Single-lever hydraulic disc brakes



POLARIS
RIDE THE BEST

J & H Cycle Accessories, Inc.

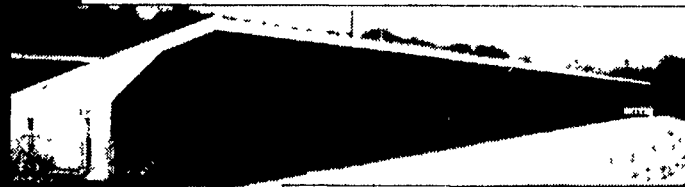
717-653-5672

1090 W. Main St., Mount Joy, PA 17522

Polaris ATVs may not be ridden by anyone under 18, and all riders should take a safety course. For safety and training information, see your dealer or call Polaris at 1-800-342-3764. ATVs can be hazardous to operate. For your safety always wear a helmet, eye protection, protective clothing and never carry passengers. © 1997 Polaris Industries Inc.

Planning to expand or update?

Check with Agri-Inc. where quality is our standard.



OPEN-SIDED CALF FACILITY

OPEN-SIDED HEIFER FACILITY



Site layout, building design & construction.

- Dairy complexes and replacement stock facilities
- Horse stall barns and riding arenas
- Workshop and machinery storage buildings
- Timber column buildings for light commercial



AGRI-INC.

The Construction Professionals

Serving The Agriculture Industry For Over 30 Years

151 E. Farmersville Road, Ephrata, PA 17522 • (717) 354-4271

