

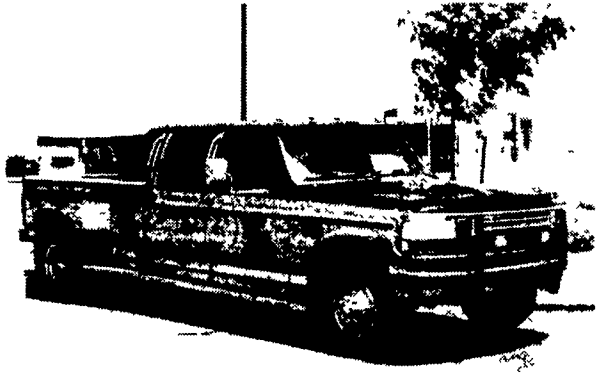
1968 - 1998

# KEARN

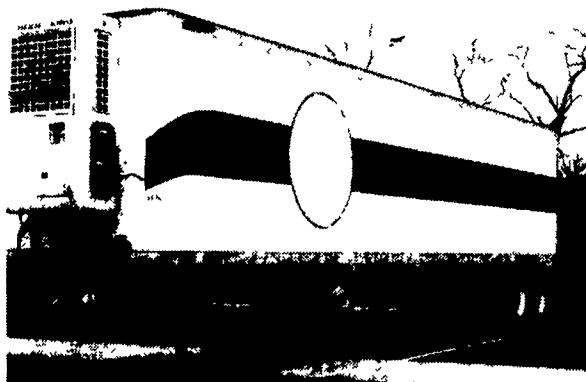
801 Katie Court  
Harrisburg PA 17109

717-564-4511  
FAX  
717-564-4519

## TRUCK RENTAL & LEASING



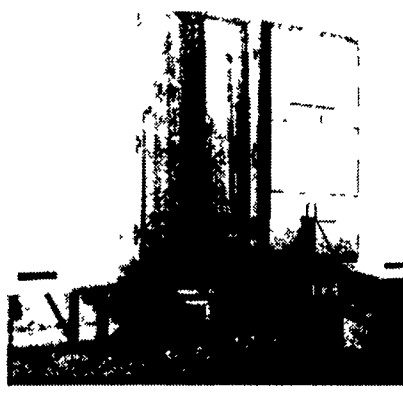
**1995 Ford F350 Crew Cab Dually** 460 Elec Gas, A/T w/Overdrive, Ratio 3.90, A/C, P/S, P/W, P/L, P/B w/Elec. Brake Bench Cloth Seats, Centerian Trk Pkg., 23,000 Miles Lots of Chrome Goodies, Clean, Priced To Sell



**1990 Great Dane Reefer** 45'x96" Rear Roll Up Door, Sliding Tandem, Tires 275/80R 22.5. Unit-Thermo King Super II Hours 23,082 8 Year Old Trl. Nice Condition



**1997 Utility VS2R** 45'x96" 13' Height 36" King Pin, Air Ride Suspension, 142" Slider, Dump Valves on Air Ride, 12" Crossmembers, C/S Side Door, 6" Additional Height, w/2000 Lb Liftgate, Strip Curtain, 1 Halogen Spot Light Rear Roll Up Door w/Strip Curtain, Maxon 2000lb Railift, 2 Halogen Spots E-Track 24" and 36" Length of Trailer ABS Brakes 1 1/4" Alum Extruded Floor Thermo King Super II Smart Reefer, 2,636 Hours (Excellent Condition—Priced To Move)



**1993 Dodge Ram 2500 Ext. Cab**, 4x4, Cummins Turbo Diesel, LE Package, Green and Tan, PW, PL, Tilt, Cruise, AT, AC, Chrome Wheels, New Exhaust, A Red Runner, 75,000 Miles **\$16,900**

**1991 Dodge Ram 2500 Reg. Cab**, 4x4, AT, Cummins Turbo Diesel, White, 110,000 Miles, Great Work Truck **\$10,900**

**1996 Dodge Ram 1500 Short Bed Reg Cab**, AT, 360, SLT, 4x4, Wheels, Maroon/Silver, A Real Looker **\$18,900**

**1995 Ford F-250 Heavy Duty Ext. Cab**, 2WD, High Miles, AT, AC, PS, PB, Red, Was \$10,900 **Sale \$9,900**

**1997 Ford F-150 XLT Ext. Cab**, 3rd Door 4 2 Ltr, 5 Spd, Alloy, PW, PL, Tilt, Cruise AC, BUcket Seats, 48,000 Miles **\$15,900**

**1998 Chevy Silverado Reg. Cab 1500**, 5 Spd, V8, PL PW, Tilt Cruise Push Bumper, Alloys, Teal Green **\$19,900**

**1995 GMC Suburban SLE**, Barn Door, 350 AT, Dual AC, 3rd Seat, Tinted Glass, Alloys Blue Green **\$21,900**

**1993 GMC Sierra SL 1500**, 2WD, AT, AC, 4 3L, PS, PB, Local 1 Owner, 62,000 Miles White **\$8,500**

**1993 Ford Ranger XLT 4x4**, V6, 5 Spd, AC, Sun Visor, Brush Guard, Alloys, Tarp, Clean, 48,000 Miles **\$10,500**



# "CLEANEST TRUCKS AROUND"



**94 Ford LN8000 C&C** 8.3L Cummins, 250 HP, 7 Sp. Trans, Custom Int., PS Air Brakes, A.C., AM/FM Cass. & C.B., Tilt Wheel, GVW 33,000 C to A 186" WB, 234" **\$25,500**



**87 Ford LN8000 C&C** 3208T 215 HP, 5 Sp. Trans, Air Brakes, PS, AC, 33,000 GVW, C to A 176", WB 240, Excellent Cond **\$11,500**



**88 Int S1900 w/New 10' Dump Bed**, DT 466, 5 Spd Trans, 2 Sp Rear, Air Brakes PS, 32,800 GVW, 49,000 Miles, Ex. Condition **\$24,500**



**81 Int. 1800 C&C** 3208 Rem 210 HP, 5 Sp. Trans, 2 Sp Rear, Air Brakes, PS, WB 206", C to A 135" GVW 33,700 **\$10,500**



**1985 L8000 New 10' Dump Complete**, Excellent Cond., 3208 Cat, 7 Sp. Trans, GVW 38,400, Air Brakes, PS **\$21,500**



**1994 Ford LN8000 w/10' Dump**, 225 HP Cummins, 5 Spd. Trans, 2 Sp. Rear, PS, AB, A/C, Pintle Hook, 33,000 GVW, 42,000 Miles, Like New, Set Up For Hauling Black Top **\$44,500**



**1970 Int. 2000 w/10' Dump**, 238 Detroit (Rebuilt), 10 Sp. Trans, 2 Sp. Rear, PS, AB, Pintle Hook, Good Dependable Older Truck **\$7,500**



**1993 Int. 4000 C&C**, DT 466, 210 HP, 5 Sp., PS Hyd. Brake (All Disc), A/C, 29,000 GVW, 254 WB, 186 C to A **\$14,500**



**1986 Int. S1600 C&C**, 6.9 Diesel, 5 Sp. Trans, 2 Sp. Rear, PS, Hyd. Brakes, 25,000 GVW, 206" W.B., 138" C to A **\$8,500**



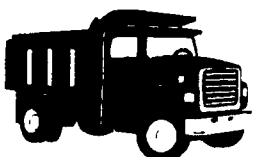
**1991 Int. 4900 C&C**, DT 466, 5 Sp., PS, Hyd. Brakes (All Disc), A/C, GVW 30,000 W.B. 254" C to A 186" **\$12,500**



**1988 RD6865 Mack Tri Axle Dump**, 17'6" Alum. heated Body, 300 Mack, 6 Sp. Trans, A/C, Set Up For Black Top Hauling, One Owner In Very Good Cond. **\$49,500**



**1988 Ford F-800 w/12 Dump**, 429 V8, Gas, 10 Sp Trans, PS Air Brakes, 52,000 GVW, 130,000 Miles, Set Up For Black Top Hauling, One Owner In Exc. Cond. **\$15,500**



## AL HAMILTON MANAGEMENT COMPANY

Used Medium & Heavy Duty Trucks

P.O. Box 157 • 55 Doe Run Road • Manheim, PA 17545  
Phone: 717-665-7145 • Fax 717-665-2137