



1988 Ford Super Duty, 17 Ft. Chevron Rollback w/Tow Bar  
**\$9,500**



1995 UllHaul 3-Car 48' Carrier Trailer, 14,000 GVW, Gooseneck Hitch, Twin Axle  
**\$7,300**



1997 International T444E 5-Spd. Loaded, 19 Ft. JerDan Rollback w/Wheel Lift, 42,000 Miles  
**\$32,500**



(1) 89 & (1) 91 International 9670 Cab Overs, Cummins Diesel, 9-Spd. Trans, Call for Individual Specs. **\$9,400**



1990 Ford F350 14 ft. Alum. Stake Dump, V8, At, New Inspection, 90,200 Miles  
**\$9,100**



1998 UD 1800 Loaded Cowell/Danco Rollback, Wheel Lift - Call for Details -



'97 & '98 UD 1400 & 1800, 16' & 18' Van Bodies and Cab & Chassis Avail. - Call for Details -



1998 UD 1800 With 10ft. Dump Body  
**\$36,031**

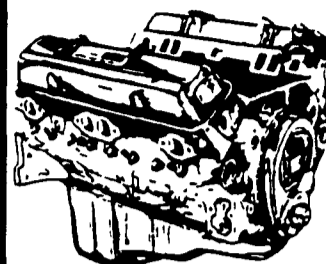


1993 GMC Diesel w/14' Van Body, Auto Trans, AM/FM, 14,250 GVWR  
**\$9,200**

**CENTRAL GARAGE, Inc.**  
**610-589-4581 or 800-860-4581**  
South 2nd St. (Rt. 419) Womelsdorf, Berks County, PA



**JONES**  
Goodwrench **ENGINE HEADQUARTERS**



GM GOODWRENCH 350 V8 1973-85 Part Number 10067353 New Engine - Not Rebuilt 36 Month or 50,000 Mile Warranty

New Engine - No Core Fee **\$1199<sup>00</sup>**

**WE'LL MATCH ANY COMPETITOR'S PRICE!**

**6.5L GOODWRENCH DIESELS From \$3,175**

Call 394-0711 for prices on other New or Remanufactured Goodwrench Engines. 2.5 Liter thru 454 cid. Gas and Diesel

Chevrolet - Pontiac - Oldsmobile - Buick - Cadillac - GMC

**JONES GM PARTS CENTER**

1335 Manheim Pike, Lancaster, PA 17604  
Easily Located on Rt. 72 Just off of Rts. 283 & 30  
Hours: Mon-Fri 7:30 a.m. - 9 p.m. Sat 7:30-3  
(717) 394-0711



**JONES BEST BUY 4X4'S TRUCKS**

Largest Stocking & Selling Extended Cab GMC Dealer in 7 States

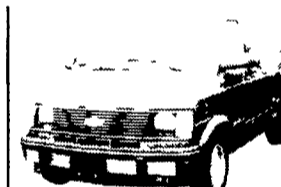
PONTIAC • HONDA  
GMC TRUCK

1335 Manheim Pike, Lancaster

Prices based on straight sale, Tax & Tags extra. Trades accepted at actual cash value. Must present this ad at time of purchase for sale price.

**JONES**

**717-394-0711**



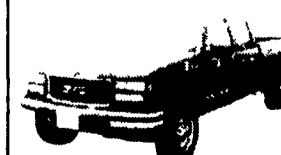
'95 CHEVY K35 4X4 DIESEL AT, 6.5 Turbo, Silverado, AC, Dually #7902 Was \$25,775  
**SALE \$21,800**



'96 GMC SUBURBAN 4x4 AT, AC, SLE, 350, Clean #7900 Was \$28,400  
**SALE \$25,800**



'98 GMC CREW CAB 4x4 6.5 Turbo, SLE, 10,000 GVW, Loaded, 10K Miles, #19999, Was \$38,400  
**SALE \$32,700**



'97 GMC SAFARI PASSENGER AT, SLE, V6, Frt & RR Air, Clean #7955 Was \$18,800  
**SALE \$17,000**